



President's Address

I was greatly honoured when invited by the Irish Wolfhound Club of Ireland's committee to take up position of President. Kathleen & John Kelly stepped down as President and Vice President at the A.G.M. due to ill health. I am sure you join me in wishing them well and a hope for a speedy return to good health. John, Kathleen and myself go back a long way, all the way back to the days of Dr May.

I know that I have joined a solid, hardworking committee and I promise I will try to match their commitment and enthusiasm for the future of the Club. All are agreed that we had a wonderful Club Open Show just before Christmas, a great success on which to build. My most sincere thanks to all those involved in making our day so enjoyable. Michael Daly, our Judge, did an excellent job in his appointment. It is a long time since I saw any judge give so much attention to each dog. Thank you, Michael. To you, our members, who supported Michael and the Club with such a fantastic entry, I salute you! A special word of thanks to the Combined Canine Club for facilitating us, your support is much appreciated. Each year you create a Festive Spirit at the show. I have seen the massive effort that goes into its preparation. It is, for me, the most enjoyable show of the year.

"CORPORAL CU" & "CORPORAL BRONAGH" ATTENDED THE FUNERAL AS MASCOTS OF THE IRISH ARMY OF THE LATE PATRICK O'HORA.

We all worry about the state of our breed, and rightly so. No doubt the breed has always gone through peaks and valleys and I think this is normal. However I feel that there are a few problems that need our special attention.

There are quite a few hounds appearing now with short legs, this is untypical, unbalanced and a real handicap to a galloping sight-hound. We need to make a conscious effort to out this problem.

An ongoing major problem is bad mouths. It is alarming the number of incorrect bites now seen in the ring. We are rapidly losing the ideal scissor bite. There are too many level bites; this causes the teeth to wear down very quickly.

We also have the very narrow lower jaw creeping in. I feel that we should pay attention to these problems before they become too widespread to breed out of our lines. I think our most challenging problem for the future is to make breeders aware of the importance of good scissor bites and the problems caused by incorrect bites. It has been argued that Graham did not mention bite in the standard, not surprisingly, as it is a fundamental requirement in a sight-hound. It affects his ability to catch and hold

quarry. Notice, he did not mention that the hound should have four legs.

I feel we have enough size and substance in our breed, and overall good bone too. Our breed may be compared to the hunter, not the Clydesdale or the racehorse.

I am confident that most of us endeavour to breed to Capt Graham's blue-print, the Standard, which is still as important today as in his time.

The Fundamentals do not change, they cannot change.

The Standard places great importance on Commanding Appearance. I think it is agreed

Highways & Byways

Committee members can be contacted by email or through the club secretary. The following club email addresses are available (replace -at- in the addresses with @) :

Officers of the Club:

President-at-iwcofireland.com

Chairman-at-iwcofireland.com

Treasurer-at-iwcofireland.com

Secretary-at-iwcofireland.com

Club services:

Rescue-at-iwcofireland.com for queries about Rescue dogs

Webmaster-at-iwcofireland.com for web site related queries

Editor-at-iwcofireland.com regarding the magazine or newsletters

Inquiry-at-iwcofireland.com for any queries regarding Irish Wolfhound puppies.

The club web site www.iwcofireland.com has further information.

Two thousand and twelve marks the fortieth anniversary of the first magazine published by the Irish Wolfhound Club of Ireland, then edited by Miles Rathbone-Scott. This year's outer cover is reminiscent of those early magazines. Many ideas of interest then are of interest today - the importance of bite comes to mind.

The general focus this year was on the welfare of the wolfhound. It is difficult to cover it all but hopefully we have made a start with nutrition and obedience training.

I hope that you enjoy reading these pages as much as I have enjoyed putting them together. Suggestions, letters, articles and even trenchant disagreements (in writing of course!) are all welcome for next year's edition!

Charles Webb, Editor

that Great Size alone does not give commanding appearance. Picture in your mind's eye, a Wolfhound with a typical head, proudly carried on a strong well arched neck flowing into a well angulated shoulder, holding a strong topline while moving with a smooth effortless long-reaching stride made possible by the well angulated forequarters and hindquarters. Note the presence and the air of confidence which demands your attention.

Remember, we hold the breed in trust for future generations. As the Club of the country of origin, we carry a big responsibility. We must strive for good quality, sound hounds to be the example of excellence.

Contents

Wolfhound Dentition.....	3
Championship Show 2011.....	6
Christmas Open Show.....	14
Green Stars & New Champions.....	17
Where are we headed.....	26
Ouborough Irish Wolfhounds.....	27
Nutrition for Puppies.....	28
Positive Reinforcement Training.....	32
Irish Wolfhound Health Group.....	34
Member's Successes.....	35
In Memoriam	36
Reminiscences of Sheelagh Seale.....	37
Whose "Sportsman's Cabinet" is it, anyway?...	38
Advertisements.....	43

Committee of the Irish Wolfhound Club of Ireland 2011 to 2012	
President	Mr Jim Behan
Vice President	Mr Gerry Clarke
Chairman	Mr Tony Dunne
Treasurer/Secretary	Mr Charles Webb
Committee	Mr Eddie Bourke, Mrs Gina Bourke, Mr Paul Dolan, Mrs Bernie McKinney

COPYRIGHT 2012 © IRISH WOLFHOUND CLUB OF IRELAND

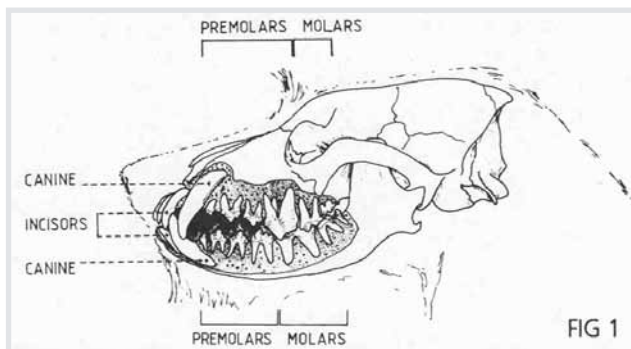
All rights reserved. No part of this publication may be reproduced, recorded or photocopied without the prior written permission of the Secretary of the Irish Wolfhound Club of Ireland. Articles printed in this magazine represent the opinion of the authors and are not necessarily endorsed by the Irish Wolfhound Club of Ireland. Care has been taken to ensure that the results are correct as given but the Irish Wolfhound Club of Ireland cannot guarantee that the results are correct.

WOLFHOUND DENTITION (Reprinted from 1972)

William V. Clarke

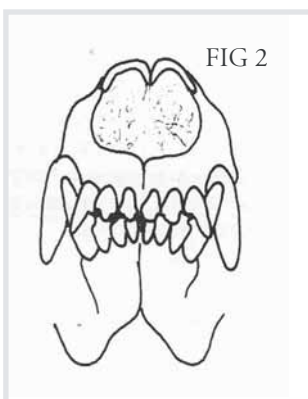
Dentition is defined as the system or arrangement of teeth peculiar to an animal. Each tooth is composed of three parts, the crown, the neck and the root. The crown is the exposed part of the tooth and is covered by enamel. The neck is a slight constriction of the tooth located at the gum line, where the enamel ends. The root is that part of the tooth below the gum, embedded in the bones of the jaws. Enamel is the hardest substance in the body and gets harder as the dog gets older. The enamel is present as a thin layer over the crown, though the thickness is relatively greater on surfaces subject to wear.

The main bulk of the tooth is composed of dentin, a substance similar in composition to bone. Nerves spread through the dentin confer sensitivity of the tooth to touch, cold etc. As the dentin wears with age these nerves recede in advance of the wearing surface thus preventing pain. Surrounding the dentin of the root is cementum which bonds the tooth to the jaw. The pulp cavity is situated in the centre of the tooth and is composed of nerves, blood vessels,



etc., which connect, via the root canals, with the central nervous and circulatory systems.

The dog, being a carnivore or meat-eater, has teeth specialised for gripping and killing prey animals and then dismembering and consuming the resultant carcass. The shape of the teeth varies in a regular manner along the tooth row, increasing in complexity towards the rear (Fig 1). The front teeth, the incisors, number twelve in total in the dog. They have long slender roots with spade shaped crowns



which in younger dogs are divided into three cusps, a long central and two shorter lateral ones.

As the incisors wear down with age these cusps are worn down to a level surface. The incisors increase in size from the centre outwards.

The outer pair of upper incisors are particularly long and pointed resembling somewhat the fangs or canines. In the lower jaw they curve upwards and

forwards and in the ideal situation operate against the rear

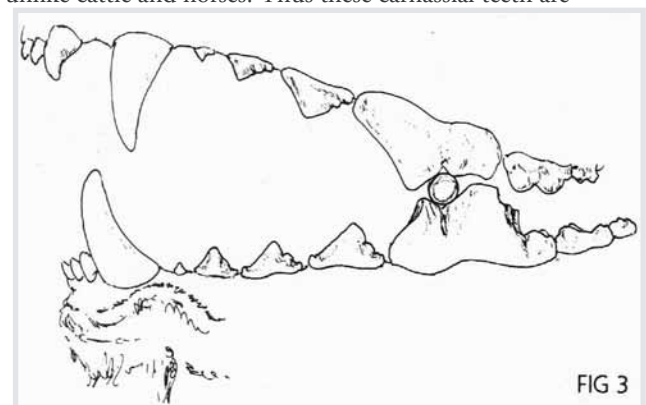
surfaces of the upper incisors, producing a scissor bite.

The dog uses its incisors to grip and pull objects.

The fangs or canines are the dogs weapons of attack and defence. They are the longest teeth of the dog, having roots about twice as long as their crowns. With its mouth closed, the dog's lower canine fits snugly in a space between the upper canine and incisors.

All teeth to the rear of the canines are often referred to as the "cheek teeth". They are divided into premolars (which have precursors in the milk dentition) and molars. The first premolars are small simple pegs that are acquired with the milk dentition but are not subsequently replaced. These small teeth seem to serve the important function of acting as stops at the base of the canines. They thus protect the gums when the canines are sunk into hard flesh. The following premolars are larger and more complex, each with a large triangular shaped central cusp and a smaller accessory cusp in front and to the rear of this. These teeth are so placed that they fail to meet when the mouth is closed. Their function is to grasp, puncture and shear.

The molar teeth in the rear of the mouth are low broad crowned teeth used for crushing food. In order to slice its meat the fourth upper premolar and the first lower molar (the carnassials) of the dog are further modified. These teeth are long with two high triangular shaped cusps with sharp edges with a v-shaped trough between them. The shape of the jaw joint in the dog will only allow movement of the jaw in one plane (up and down), unlike cattle and horses. Thus these carnassial teeth are



kept in alignment, slicing past each other as the jaw is closed, scissor like (Fig 3). The fourth lower premolar in dogs plays a subsidiary role in this function with its posterior edge slicing past the front edge of the fourth upper premolar.

Shearing action of the carnassial teeth (upper 4th premolar and lower 1st molar) showing the method by which the dog positions the item to be cut in the troughs of these teeth from which it cannot slide as they close. The full permanent dentition of the dog consists of 42 teeth, 6 incisors, 2 canines, 8 premolars and 4 molars in the upper jaw and 6 incisors, 2 canines, 8 premolars and 6 molars in the lower jaw. The milk or deciduous dentition consists of 28 teeth in total. As the jaws of the

TABLE 1		
ERUPTION OF PERMANENT TEETH OF DOGS		
GROUP	TOOTH	ERUPTION PERIOD
INCISORS	Central	2 - 5 months
	Intermediate	2 - 5 months
	Lateral (most breeds)	4 - 5 months
CANINE		5 - 6 months
PREMOLARS	1st	4 - 5 months
	2nd	6 months
	3rd	6 months
	4th	4 - 5 months
MOLARS	1st	5 - 6 months
	2nd	6 - 7 months
	3rd	6 - 7 months

dog grow the larger permanent teeth replace their smaller milk predecessors in a set sequence and the molars are added to the rear of the tooth rows (Table 1).

As a milk tooth reaches its full length the dentine of its root starts to be absorbed eventually leaving just an enamel shell which is pushed out by the developing permanent tooth. Exceptions are the canine teeth where the eruption of the permanent teeth usually precedes the shedding of the corresponding deciduous ones by 2 or 3 weeks. The time of eruption of the permanent teeth is rather closely correlated with

the lifespan of the breed. The teeth erupt earliest in the large breeds which, as we know, have the shorter lifespans.

In the Irish Wolfhound a scissors bite (Fig 4 a) is regarded as ideal. A scissors bite, in which the lower incisors fit snugly against the rear surfaces of the upper one, gives the dog a strong grip.

A level, or pincer bite (Fig 4 b) is also acceptable but a dog with this bite, having the incisors meeting edge to edge, will wear down these teeth much quicker. An undershot jaw (Fig 4 c), in which the lower incisors project beyond the upper incisors, is a serious fault of dentition and gives a Wolfhound an untypical expression.

Captain Graham remarked that the head of a Wolfhound should look as if it is overshot, but actually have a correct scissors bite. The shape of the lips giving the Wolfhound this look.

The state of the bite (dental occlusion) is determined by the relative growth of the muzzle and the lower jaw. During the seven to ten month period the jaw of the puppy will grow more than the muzzle and changes in the dental occlusion may occur. Thus a puppy that has a tightly fitting scissor bite when young may end up with a level bite. The final dental occlusion is determined by genetics, nutrition, environment and the mechanical effect of the interlocking action of the teeth in the upper and lower jaws. The extra growth of the lower jaw that occurs in breeding lines that tend to be undershot can result in a jaw that bows away from the upper jaw in the premolar area but has an acceptable bite owing to the maintenance of the correct relationship between the canine teeth and the incisors by dental interlock.

While the correct alignment of the incisors is functionally important, they are the poorest teeth in the mouth to use for evaluation of jaw structure. As the incisors erupt their roots are incompletely formed and the surrounding bony tissue of the front of the muzzle is still soft. The incisors are thus easily displaced by relatively minor forces, and once displaced they tend to remain there as the roots develop and the bone solidifies.

To evaluate the dental occlusion, it would be better to use the lower canines and the premolars. These teeth more fully reflect the genetic influences on jaw structure. A tendency for the lower canine to press

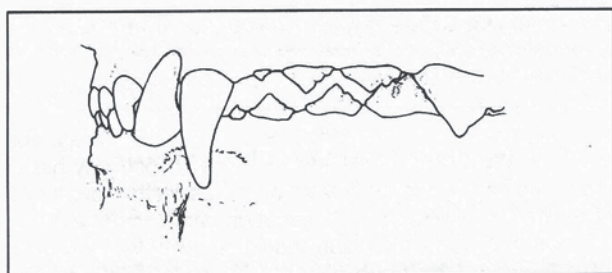


FIG. 4a Correct bite.

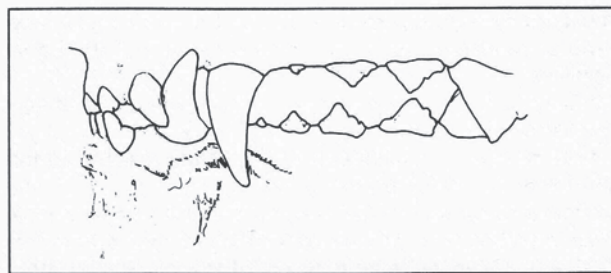


FIG 4b Level bite with slight bowing of the lower jaw. The premolar rows being further apart and not properly staggered. The lower canine rubs against the lateral upper incisor and is removed from the upper canine. The extra growth of the lower jaw has pulled the central upper incisors forward with it.

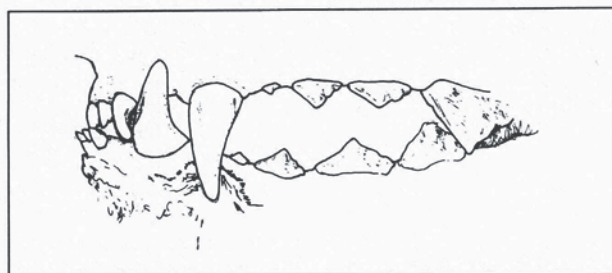


FIG 4c Undershot bite with a lot of bowing of the lower jaw and with the canine against the upper lateral incisor.

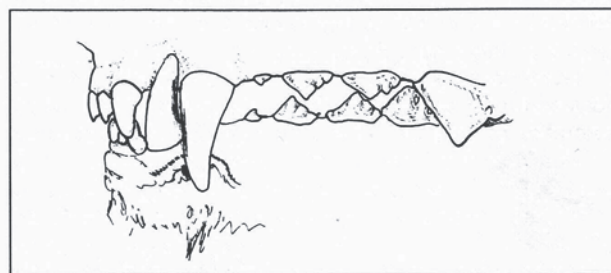


FIG 4d Overshot bite showing the canines rubbing against each other and incorrect placement of the rows of premolars.

against the rear surface of the lateral incisor or against the front surface of the upper canine is an indication that the jaws are tending to deviate from the desired positions. The high points of the lower premolars should be in line with the spaces between the premolars above.

The condition, which has been called "interior crossbite" in which the incisors appear undershot but the canines and premolars are perfectly aligned is a defect worth consideration by the above method. This defect is almost always related to an injury and is rarely transmitted genetically. The incisor pattern is extremely flat in the upper jaw rather than a normally curved arch.

Retention of deciduous teeth occurs in most breeds of dogs and most commonly involves the canine teeth. When absorption of the root of the deciduous tooth does not occur the developing permanent tooth cannot displace it and thus the permanent tooth is forced from its normal position as it moves into the dental arch. The resulting change in position may severely affect final occlusion of the teeth. Milk tooth retention results in characteristic displacement of each permanent tooth. The lower canine tooth erupts inside and to the rear of the retained deciduous canine tooth. This results in the displaced lower canine tooth cutting into the roof of the mouth as it grows to full length. The incisors are moved forward as a result of retained milk incisors. Retention of a deciduous tooth long past its usual evulsion period often is due to lack of a permanent tooth to take its place. Such teeth can be retained for as long as 3-5 years.

The absence of teeth is a genetic defect and most commonly affects the premolars. The absence of a single tooth may not be transmitted genetically. When teeth in the same area or the

same tooth on both sides of the jaw are absent the likelihood of genetic transmission increases. In Wolfhounds the absence of the lower fourth premolar on one or both sides is the commonest omission.

Wry jaws is where the lower jaw is not set parallel to the upper jaw while the fault called "teeth awry" occurs where the alignment of the jaws is correct but the incisors are crooked or misplaced so that the bite tends to look slightly undershot in front. An occasional incisor out of place is hardly a serious fault. Extra incisors and premolars can occur in the dog. For example, the second lower premolar, which normally has 2 roots, can be replaced by two single rooted teeth. Counting a dog's teeth when checking its dentition hardly serves a useful function. Rather, consideration should be given to the relative importance of the teeth absent. Absence of any of the carnassials (4th upper premolars and 1st lower molars) would be a serious fault but I would not consider absence of a premolar in front of these an important fault. If a large gap is present in a dog's mouth because of absence of several teeth this must be rated as serious. Size of teeth should be maintained.

In a coursing hound ability to catch its prey is obviously of prime importance. Once caught the hound needs to hold its prey and kill it for which the dog requires a good bite and canines. Faults of the premolars mostly affect the efficiency of the dog when eating, hardly a very serious fault.

Sunday 10th June 2012

By kind permission of the Office of Public Works

**The Irish Wolfhound Club of Ireland
Championship Show
Will be held at
Farmleigh, Castleknock, Dublin 15**

Easy access through the Phoenix Park, Free Car Parking
and it is rumoured that

A Brass Band, Food Market and Wolfhound memorabilia
will make this a day out for all the family

Further details on Website www.iwcofireland.com and facebook 'Irish Wolfhound Club of Ireland' group

The Irish Wolfhound Club of Ireland Championship Show June 12th 2011



Outi Piisi-Putta, Beatus Gaius and Gaia (photo by David Dalton).

The Irish Speciality

Sometimes one's dreams come true. One of my dreams came true in June 2011 when I stand in the middle of the ring at the Irish Speciality – in continuous rain. Well, one can't expect everything.

I want to thank the club for the invitation, all the brave people who came to the site and showed their wolfhounds for me despite of the rain. Also thousands of thanks for the kind hospitality, all the good advices we received from you and the desire from your side to make our stay in Ireland memorable. It was so memorable we want to come again and to get to know also places which were now outside our routes. A special thank for the venue; the most beautiful place and very suitable for a Speciality. Avondale house was magnificent and the forest park was something I'd like to meet with sunshine, too.

6 – *The Irish Wolfhound Club of Ireland 'The Irish Hound' 2012*

When judging giant breeds, we always are faced with the fact that different types of the breed are represented in the ring. This show was no exception. There were different types; in other words different proportions and different lines, but in my opinion all wolfhounds at the show were typewise within the allowed frame. Some were a bit long in body and/or low on legs; some a bit short, rangy and with relatively open angulation. Of course the ideal Wolfhound is somewhere between: a hound who looks to be capable to move both in durable and easy trot and in fast, double suspension gallop. It's actually a very rare combination in canines which makes our breed quite special. Giant size doesn't make the "puzzle" easier.

As a whole I was pleased with some very important details: excellent muscle condition, many big and strong teeth and bites which were better than expected and typical temperaments. Not all coats

were prima, but not any of woolly or soft quality. On the minus side I found – surprise, surprise – straight fronts; either straight shoulders or short and upright upper arms which is more common. Unfortunately a very wide-spread fault. Also quite many light eyes which so easily spoil the typical, soft Irish expression. Some wolfhounds disliked the weather by showing their I-don't-like-this-feeling on the move, very understandable.

There was one thing which surprised me and which differed from my earlier experience. It happens often

in this breed that we meet hounds who look great when standing but on the move they somehow loose the quality; the balance in standing suddenly changes into imbalance on the move. But in Ireland I also saw the opposite; a couple of your hounds which didn't show so high quality in standing looked much better in movement. How is this possible? My personal and very unscientific opinion is the good muscle condition of your wolfhounds is the reason for this phenomenon. If you have any other good alternative reasons, please let me know.

Class:		Minor Puppy Dog	1 Entry	
①	1	Moran Mr. Eoghan, BALLYMUCKLEHEANY ALEXANDER D, Y99658, 27/11/2010, Br. Mr. David Dawson, Santir Spirit Of The Glen Over Bribiba (GB) - Maggie May Of Nutstown (X76581)		
Class:		Puppy Dog	3 Entries	
①VP	2	Finney Timothy, Marion & Ian, GULLIAGH ARAMIS D, Y91917, 03/08/2010, Br. Exhibitor, Int Ch Chambord du Grand Chien de Culann - Gulliagh Ginny		Best Puppy
②VP	3	Kelly Mr J & Mrs K, CUDONNCHU BUACHAILL CIARAN D, Y87166, 19/06/2010, Br. O'Donoghue, Ch. Prince Finn Of Nutstown - Cudonnchy Liath		
③VP	4	Messenger Mr & Mrs G R, KILLOUGHERY THE DAZZLER AT TIBRIDARN D, Z05185, 27/07/2010, Br. Mr C & Mrs KI Gregory, Solstrand Yorick At Baronglen - Killoughery Teagan		
Class:		Junior Dog	5 Entries	
①EX	8	Mullen William and Joanne, BROUGHADOWEY TIR EOGHAIN D, Y97908, 14/07/2010, Br. Exh, Bribiba's Drummer Boy At Broughadowey - Midnight Emma Of Nutstown		
②EX	9	O'Keeffe Ms A, CALCARA BRACKEN D, Y 78962, 12/03/2010, Br. Exh, Cuinnegehal Maginty - Calcara Ennya		
Class:		Intermediate Dog	4 Entries	
①EX	11	Lloyd-Jones Mr S, RYNCHANON SPIRIT IN THE SKY OVER NIGHTWING D, Z00027, 08/12/2009, Br. Miss W Tugby, GB IR Ch Rynchanon One Wild Knight At Nightwing JW - Rynchanon Ain't Misbehavin		GSD RBOB
②VG	12	McDonnell Mr S, CUALAINN ELI AL1 D, AL0086804, 07/12/2009, Br. Mr JG & Mrs N Harvey, Pitlochrys Rolex Atcak00697nld - Cualainn Persia Aa1		
Class:		Open Dog	3 Entries	
①EX	14	Finney Timothy, Marion & Ian, CUKNOCKLONG HENRY HIGGINS JCH D, Y66825, 15/06/2009, Br. P O'Neill, Ch Gulliagh Sequoia Cw 07 - Ch Gulliagh Jill Pole Cw 08		RGSD
②VG	15	Gargan Mr Ivan, CUDONNCHU MOR D, X59390, 03/07/2006, Br. Kelly, Millenium Of Nutstown - Ros Ala Of Cudonnchu		
Class:		Champion Dog	6 Entries	
①EX	17	Clarke Mr. G. F. & Mrs. P, CH. OSMAR OF SHANTAMON JUN.CH.CW. D, Y31407, 06/09/2008, Br. Exh., Multi. Ch. Pitlochrys Catweazle - Ch. Ebony Of Shantamon		Tallest Dog
②EX	20	Kelly Mr J & Mrs K, CH. PRINCE FINN OF NUTSTOWN D, Y08652, 02/12/2007, CH. Lazy Bones Of Nutstown - Winlaoshan Binny Babe		
④VG	21	Kelly Mr J & Mrs K, CH. DONOVAN OF NUTSTOWN D, X76584, 26/12/2006, Br. Exh, Lazy Bones Of Nutstown - Golden Lady Nutstown		
③EX	22	Smith Mr & Mrs A T & M S C, CH. UELLA O'HOGAN (JUN.CH.C.W.08.) D, X82187, 19/03/2007, Br. Exh., Uella O'Brien - Uella Oola		
Class:		Puppy Bitch	1 Entry	
①VP	24	Mullen William and Joanne, BROUGHADOWEY TARA B, Y97909, 14/07/2010, Br. Exh, Bribiba's Drummer Boy At Broughadowey - Midnight Emma Of Nutstown		
Class:		Junior Bitch	6 Entries	
①EX	25	Clarke Mr. G. F. & Mrs. P, ROXANNE OF SHANTAMON B, Y81796, 18/04/2010, Br. Exh., Baronglen The Knight Walker - Ch. Gb. & Int. Ch. Ionagh Lady Of Shantamon (An.Ch.07,08,09.)		GSB, BOB, Best Head, Best Movement
③VG	27	Daly Mr Eoghan, JACKI OF NUTSTOWN B, X 17201 TAF, 08/01/2010, Br. Mr J & Mrs K Kelly, Champion Prince Finn of Nutstown - Dark Bernie Of Nutstown		
②EX	28	Finney Timothy, Marion & Ian, GULLIAGH CONSTANCE JCW11 B, Y81068, 13/03/2010, Br. Exhibitor, NL Ch Pitlochry's O'Bryan Orak - Gulliagh Barraduff		

Class:	Intermediate Bitch	8 Entries
③EX 31	Clark Ms V A, TARLOG CUIMHNE AR KILLYKEEN B, Y70625, 04/08/2009, Br. Exh, Killykeen Aenghus - Mariaw Mary Kate Danaher At Tarlog	
②EX 34	O'Neill Mr. P, CU KNOCKLONG ELIZA DOOLITTLE B, Y66823, 15/06/2009, Br. Exh., Guiliagh Seqvola - Guiliagh Jil Pole	
VG 36	Smith Mr & Mrs A T & M S C, CUFODHLA ENYA TO UELLA B, Y62025, 16/08/2009, Br. Ms C Walsh, Ch Uella O'Hogan C.W.08.Jun.Ch - Cufodhla Anu	
④VG 37	Smith Mr & Mrs A T & M S C, CUFODHLA ELLA BY UELLA B, Y62029, 16/08/2009, Br. Ms C Walsh, Ch Uella O'Hogan C.W.08.Jun.Ch - Cufodhla Anu	
①EX 38	Tugby Wendy M, RYNCHANON DANCIN BAREFOOT B, Z00029, 08/12/2009, Br. Miss W Tugby, GB IR Ch Rynchanon One Wild Knight At Nightwing JW - Rynchanon Ain't Misbehavin	
Class:	Open Bitch	10 Entries
④VG 40	Carroll Miss T, COOLDROSS LADY B, X43595, 01/01/2007, Br. Paula Stockwell, Cians Boy - Cians Boy	
①EX 41	Clarke Mr. G. F. & Mrs. P, NINA-LEIGH OF SHANTAMON EW.09. B, X98222, 02/09/2007, Br. Exh., CH. King Huzzar Of Nutstown - Gina Of Shantamon	RGSB
③EX 42	Finney Timothy, Marion & Ian, GULLIAGH BARRADUFF B, X66271, 29/08/2006, Br. Mr TN, Mrs MA & Mr I Finney, Ch/Int Ch Gulliagh Zest An Ch 2003, 2006, Cw 2006 - Ch Gulliagh Nedine	Tallest Bitch
VG 43	Gargan Mr Ivan, BRIBIBA'S COUNTRY DANCER BRIBIBA'S COUNTRY DANCER B, Y63016, 11/05/2009, Br. Bribiba, Hazianne Shaun Thornton Hazianne - Santir Spirit Of Scotland At Bribiba Santir Spirit	
G 44	Kelly Mr J & Mrs K, PRETTY DAISY OF NUTSTOWN B, Y5863, 14/06/2009, Br. Exh., Kalerigg Chieftain Of Nutstown - Maddy Rose Of Nutstown	
②EX 47	Tugby Wendy M, RYNCHANON AIN'T MISBEHAVIN B, X81009, 26/12/2006, Br. Owner, Hazianne Shaun Thornton - Solstrand Vanity Fair Of Baronglen	
Class:	Champion Bitch	2 Entries
②EX 49	Clarke Mr. G. F. & Mrs. P, CH. OPHERRA OF SHANTAMON (JUN.CH.CW.10.AN.CH.10.) B, Y31409, 06/09/2008, Br. Exh., Multi. Ch. Pitlochrys Catweazle - Ch. Ebony Of Shantamon	
①EX 50	Finney Timothy, Marion & Ian, CH/GB CH GULLIAGH CORRIG CW11 B, X66274, 29/08/2006, Br. Mr TN, Mrs MA & Mr I Finney, Ch/Int Ch Gulliagh Zest An Ch 2003, 2006, Cw 2006 - Ch Gulliagh Nedine	Best Coat
Class:	Veteran Bitch	2 Entries
①EX 52	O'Keeffe Ms A, CALCARA ENNYA B, W38036, 10/02/2003, Br. Exh., Calcara De-Danann - Courtay Aoife Of Calcara	



Minor Puppy Dog:

Moran's Ballymuckleheany Alexander: A nice boy but unfortunately I found only one testicle.

Puppy Dog:

1) VP Finney's Gullagh Aramis: A very tall young boy with nice proportions for his young age. Long head which should maturity and get more strength in skull. Nice, long neck. A bit straight front. Excellent top- and underline for this age. Excellent in bone. Good rear angulation. Moves very well. A bit puppy-shy.

2) VP Kelly's Cudonnchu Buachaill Ciaran: Well grown, medium size boy, would prefer a bit more legs for this length. Long, level head, but somehow plain. Medium long neck, straight in upper arm, very well developed ribcage for this age, nice rear angulation. Moves in good balance. Good temperament.

3) VP Messenger's Killoughery The Dazzler At Tibridarn: Quite big young male, would like to see slightly more legs and also a bit more bone. Long head, would prefer darker eyes. Very nice long neck, straight upper arm, good top- and underline, typically angulated rear. Moves well in good balance, nice temperament.

Junior Dog:

1) EX Mullen's Broughadowey Tir Eoghain: A very nice boy, still immature, medium size and medium bone. Nice head, dark eyes, very strong and white teeth, good neck, a bit straight front, very well developed ribcage. Slightly long in body because of too long loin, nice rear angulation. Moves very well and in good balance. Nice temperament.

2) EX O'Keefe's Calcara Bracken: Quite well developed for his age, with quite long lines, would like to see a bit more bone. Excellent head, super ears, long and strong neck. Good shoulder, straight in upper arm which also makes the pasterns stiff. Very nice top- and underline. Well angulated



rear. Moves parallel, a bit short front stride, as a whole easy movement. Good temperament.

Intermediate Dog:

1) EX Lloyd-Jones' Rynchanon Spirit In The Sky Over Nightwing: 18 months old still immature male of excellent type and with excellent proportions. Long head, would prefer darker eyes and the head should mature with age. Excellent neck, good front and really nice top- and underline for this age, well developed ribcage. Strong and well angulated rear. Coat could be in better condition. Excellent mover from all sides. Nice temperament.

2) VG McDonnell's Cualainn Eli: Medium size young male with very good proportions. Typical head, minor problems with the bite. Medium long neck. Very upright upper arm and straight pasterns. Good top- and underline, well angulated rear. Gay tail spoils the outline in movement. Typical temperament.

Open Dog:

1) EX Finney's Cuknocklong Henry Higgins: Almost 2 years old male of excellent type and with excellent proportions. Very nice head and the most beautiful expression. Would prefer slightly longer neck. Front- and rear angulations in good balance, excellent top- and underline. Moves parallel and with medium reach. As a whole a very sound male.

2) VG Gargan's Cudonnchu Mor: A bit plain male but with correct proportions. Would like slightly longer muzzle and less stop. Medium long neck. A bit overloaded on shoulder and upright upper arm. Good topline in standing, but a bit soft on the move. Medium angulated rear. Coat is not in the best condition today. Moves parallel, wish to see more reach and drive.

Champion Dog:

1) EX Clarke's Osmar of Shantamon: Huge, adult male of excellent type. Strong, massive and masculine in each cell. Unbelievable carriage. Maximal length. Excellent, masculine head, very good rose ears. Good length of neck, good shoulder, slightly upright upper arm. Very good top- and underline, strong and well angulated rear. Excellent mover from all sides, and also carries himself on the move the best possible



way. Has some kilos (or pounds) overweight, but if the dog moves like he does, the judge must re-evaluate the judging priority list. A gentleman in temperament.

2) EX Kelly's Prince Finn of Nutstown: A medium size male of excellent type and with excellent proportions. Long, typical head, wish to see a bit stronger muzzle, nice ears. Long, nice neck, a bit upright upper arm. Good top- and underline. Typically angulated rear. Moves parallel and with good side movement. Would prefer slightly more bone. Very nice temperament.

3) EX Smith's Uella O'Hogan: Very nice, high quality male with excellent proportions. Very masculine. Nice, masculine head with good expression. Excellent neck, well angulated in both ends, very good top- and underline. Unfortunately he didn't have enthusiasm at all on the move which dropped him to the 3rd place. Typical temperament.

Puppy Bitch:

1) VP Mullen's Broughadowey Tara: Strong bitch puppy, grown up well, with excellent proportions for her age. Feminine head, neat ears, would prefer slightly longer neck. A bit straight on shoulder. Well developed ribcage, excellent top- and underline, strong and well angulated rear. Moves parallel and in good balance. Very promising.



Junior Bitch:

1) EX Clarke's Roxanne of Shantamon: Junior bitch of super quality in all details. She is a super IW-lady from the nose to the tip of the tail. Excellent carriage. Excellent mover. Who could wish anything more? Congratulations to the breeder and owner.

2) EX Finney's Gulliagh Constance: 15 months old bitch, gives today a bit rangy general appearance. Nice, typical head, would like to see more length in neck, a bit upright upper arm. Topline is not yet ready, very good underline. Nicely angulated rear, but wish to see more width over croup. Moves parallel but would like to see more reach and drive. Nice temperament.

3) VG Daly's Jackie of Nutstown: A junior bitch who still is very much a baby. She has correct proportions and very nice and typical lines, but would like to see a bit more size and strength on her. Nice and typical head.



Moves well, a bit more drive could do a miracle.
Typical temperament.

Intermediate Bitch:

1) EX Tugby's Rynchanon Dancin Barefoot:
Young bitch of excellent type, a very high quality one. Excellent proportions. Long, nice head, slightly light eyes. Really excellent arch of the neck. Very well angulated in both ends. Excellent top- and underline, well developed ribcage. Carries herself well. Excellent mover. Nice temperament.

2) EX O'Neill's Cu Knocklong Eliza Doolittle: Big and strong bitch, gives in standing a bit long impression. Strong head, could be more feminine, a bit light eyes. Would like to see longer neck. Moderate front, very good topline, under line is spoilt by long hair. Well angulated, strong rear. Very good mover. Typical temperament.

3) EX Clark's Tarlog Cuimhne Ar Killykeen: Bitch with rather long lines, medium size, should need more bone. Long, feminine head, a bit narrow throughout. Nice neck. A bit straight front, very good topline, ribcage still quite immature. Well angulated rear. Parallel movement but a bit narrow.

4) VG Smith's Cufodhla Ella By Uella: Medium size bitch with good proportions but gives a bit plain overall impression. Typical head. Medium long neck, slightly straight front. Would prefer a better ribcage. Moderately angulated rear. Parallel movement, needs more reach and drive.

Open Bitch:

1) EX Clarke's Nina-Leigh of Shantamon:
Very nice adult bitch with correct proportions and with plenty of fluent lines. Excellent, feminine head, slightly light eyes, very good ears. Neck OK, upper arm could be better angulated. Excellent top- and underline. Strong and powerful rear. She was a joy for eye on the move; easy and active movement from all sides. Typical temperament.

2) EX Tugby's Rynchanon Ain't Misbehavin:
An adult bitch of excellent size and excellent proportions. Very nice, feminine head, excellent expression. Good neck, slightly straight front. Excellent top- and underline, super rear. Parallel movement, good reach but would like to see more drive. Nice temperament.

3) EX Finney's Gulliagh Barraduff: An adult bitch who gives slightly rangy overall impression for this age, excellent bone. Nice head and good neck. Unfortunately very upright upper arm which makes the front step too short. Excellent top- and under line, well angulated rear. Parallel mover, but front movement should be longer in order to get full balance on the move. OK temperament.



4) VG Carroll's Cooldross Lady: A bitch with correct proportions and nice lines – on the move. In standing she had somehow insufficient lines, but perhaps this was more a question of handling because the lines become better and more natural on the move. Typical head and nice temperament.

Champion Bitch:

1) EX Finney's Gulliagh Corrig: An old-fashioned, elegant lady with a lot of glamour on her. Excellent carriage and overall impression. Very typical and nice head with the most beautiful, soft expression. Good bone. Very nice top- and underline, well angulated rear. Sound, parallel mover, but would like to see more drive. Nice temperament.

2) EX Clarke's Opherra of Shantamon: Strong and powerful bitch with long lines. Very nice and typical head, good expression, good ears. Nice, long neck. Strong in bone. Front could be better angulated; the difference between front- and rear angulation was big. Excellent top- and underline. Moved really well; the front step was a bit short. Excellent carriage. Very nice temperament.

Veteran Bitch:

1) EX O'Keeffe's Calcara Ennya: 8,5 years old bitch still in excellent condition, a very high quality one. Correct proportions and very nice, long lines throughout. Beautiful, feminine head with nice expression. Slightly short on neck. Well angulated front (!), still excellent topline both in standing and on move. Moved parallel with good reach and with plenty of drive. The lady didn't like the ring. Congratulations to the owner.

After all critiques "black on white" I want to thank all the exhibitors; you accepted well my judging. In show slang it means you have nice, Irish temperament. And finally also thanks to the ring personnel: you made it possible for me to concentrate on judging. It was and always is really important.

Outi Piisi-Putta



Christmas Open Show in conjunction with the Combined Canine Club

Our open show this year took place inside the National Show Centre at Cloghran.

Michael Daly was the Irish Wolfhound judge and was introduced in the show schedule by our new President Jim Behan:



Michael Daly

Michael was active in the Breed in the late 1970s and the 1980s. He did not breed many hounds but he bred well. Michael's first judging appointment was at the Irish Wolfhound Open Show in Waterford in 1985 and he awarded Green Stars for the first time in 1986.



The Junior Dog class was won by Willie & Joanne Mullen's "Broughadowey Tir Eoghan" who went on to take Reserve Best of Breed

Ivan Gargan's "Bribiba's Country Dancer" was reserve Best Bitch

Best of Breed was won by Gerry Clarke's "Roxanne of Shantamon"



Marion Finney's Ch Cucnocklong Henry Higgins won Champion dog and was Reserve Best dog



True to tradition all of the children were winners and collected prizes and ribbons.

IRISH WOLFHOUND

Official Breed Club Show

Judge: Mr. M. Daly

		Class:	Junior Dog	4 Entries
		453	Finney Timothy, Marion & Ian, GULLIAGH ARAMIS D, Y91917, 03/08/2010, Br. Exhibitor, Int Ch Chambord du Grand Chien de Culann - Gulliaigh Ginny	
		454	Kelly Mr J & Mrs K, CUDONNCHU BUACHAILL CIARAN D, Y87166, 19/06/2010, Br. O'Donoghue, Ch. Prince Finn Of Nutstown - Cudonnchy Liath	
		455	Messenger Mr & Mrs G R, KILLOUGHERY THE DAZZLER AT TIBRIDARN D, Z05185, 27/07/2010, Br. Mr C & Mrs KI Gregory, Solstrand Yorick At Baronglen - Killoughery Teagan	
		456	Mullen William and Joanne, BROUGHADOWEY TIR EOGHAIN JUN CH D, Y97908, 14/07/2010, Br. Exh, Bribiba's Drummer Boy At Broughadowey - Midnight Emma Of Nutstown	
		Class:	Intermediate Dog	2 Entries
		457	Coniry Mr. T & P, CAPTAIN JACK D, Y72751, 04/02/2010, Br. Mrs Kathleen Phelan, Knockadarren jack the Lad - Niamh Deas	
		458	Kelly Mr J & Mrs K, FEAR OF NUTSTOWN D, Y25199, 30/12/2009, Br. Exh., Prince Finn Of Nutstown - Meadh Of Nutstown	
Best Dog		Class:	Open Dog	3 Entries
456		459	Gargan Mr Ivan, CUDONNCHU MOR D, X59390, 03/07/2006, Br. Kelly, Millenium Of Nutstown - Ros Ala Of Cudonnchu	
		460	O'Keeffe Ms A, JUNCH.CW11.JCW11. CALCARA BRACKEN D, Y 78962, 12/03/2010, Br. Exh, Cuinnegheal Maginty - Calcara Ennya	
Reserve		461	Redmond Mr. T, ATHCARNE CIARAN D, X90228, 16/06/2007, Br. T. Redmond, Athcarne Ciaran - Monageer Brid Of Athcarne	
462		Class:	Champion Dog	3 Entries
		462	Finney Timothy, Marion & Ian, CH CUKNOCKLONG HENRY HIGGINS JCH D, Y66825, 15/06/2009, Br. P O'Neill, Ch Gulliaigh Sequoia Cw 07 - Ch Gulliaigh Jill Pole Cw 08	
Best Bitch		463	Kelly Mr J & Mrs K, CH. PRINCE FINN OF NUTSTOWN D, Y08652, 02/12/2007, CH. Lazy Bones Of Nutstown - Winlaoshan Binny Babe	
481		464	Kelly Mr J & Mrs K, CH. DONOVAN OF NUTSTOWN D, X76584, 26/12/2006, Br. Exh, Lazy Bones Of Nutstown - Golden Lady Nutstown	
		Class:	Puppy Bitch	4 Entries
Reserve		465	Kelly Mr J & Mrs K, ISOBEL OF NUTSTOWN B, Z13528, 28/04/2011, Kalerigg Chieftian Of Nutstown - Dark Bernie Of Nutstown	
476		466	O'Keeffe Ms A, CALCARA CAILIN B, Z 09200, 10/04/2011, Br. Exh, Calcara Bracken Cjw 11, Cw11 - Calcara Spice	
		467	O'Keeffe Ms A, CALCARA CIARA B, Z09199, 10/04/2011, Br. Exh, Calcara Bracken Cjw 11, Cw11 - Calcara Spice	
Best of Breed		468	Scott Mrs. S. M, TARLOG TULLAGH WATERFALL B, Z11902, 04/03/2011, Br. Miss V. Clark, Tarlog Liam Neeson - Killykeen Niam At Tarlog	
		Class:	Junior Bitch	2 Entries
481		469	Leavy Barbara M, MONADARRAGH NASA B, Y95379, 10/07/2010, Br. Barbara M Leavy, Nutstown Finn - Bridget's Girl of Nutstown Pia	
Reserve		470	Mullen William and Joanne, BROUGHADOWEY TARA B, Y97909, 14/07/2010, Br. Exh, Bribiba's Drummer Boy At Broughadowey - Midnight Emma Of Nutstown	
		Class:	Open Bitch	8 Entries
456		475	Dunne & Rock Mr Anthony W. & Ms Catherine, ENYA CU NA ARD RI B, X55675, 27/06/2006, Br. Mrs E Hanley & Mr C Brown, Ch Kingfisher of Nutstown - McCushla Cu Na Ard Ri	
		476	Gargan Mr Ivan, BRIBIBA'S COUNTRY DANCER BRIBIBA'S COUNTRY DANCER B, Y63016, 11/05/2009, Br. Bribiba, Hazianne Shaun Thornton Hazianne - Santir Spirit Of Scotland At Bribiba Santir Spirit	
		477	Kelly Mr J & Mrs K, PRETTY DAISY OF NUTSTOWN B, Y5863, 14/06/2009, Br. Exh., Kalerigg Chieftain Of Nutstown - Maddy Rose Of Nutstown	
		478	Potter Mr. J. & Mrs M., TARLOG JUNO OF THE VALLEY B, Y67589, 04/08/2009, Br. Ms. V. Clark, Killykeen Aenghus - Marlaw Mary Kate Danagher at Tarlog	
		479	Smith Mrs. M S C, CUFODHLA ENYA TO UELLA B, Y62025, 16/08/2009, Br. Ms C Walsh, Ch Uella O'Hogan C.W.08.Jun.Ch - Cufodhla Anu	
		480	Smith Mrs. M S C, CUFODHLA ELLA BY UELLA B, Y62029, 16/08/2009, Br. Ms C Walsh, Ch Uella O'Hogan C.W.08.Jun.Ch - Cufodhla Anu	
		Class:	Champion Bitch	1 Entry
		481	Clarke Mr. G. F. & Mrs. P, CH. ROXANNE OF SHANTAMON (JUN.CH.) B, Y81796, 18/04/2010, Br. Exh., Baronglen The Knight Walker - Ch. Gb. & Int. Ch. Ionagh Lady Of Shantamon (An.Ch.07,08,09.)	

Green Star Wolfhounds For 2011

SHOW	JUDGE	GREEN STAR WINNERS	BOB
Newtownards	Mrs C	Gulliagh Ardtully	<input checked="" type="checkbox"/>
27/02/2011	Pettersson	Ir Ch Gulliagh Corrig	<input type="checkbox"/>
IKC Celtic Winners	Mrs M R Parker	Calcara Brachen	<input type="checkbox"/>
17/03/2011		Ir Ch Gulliagh Corrig	<input checked="" type="checkbox"/>
Banbridge	Mrs A Bollard- Edwards	Ir Ch Osmar of Shantamon	<input type="checkbox"/>
09/04/2011		Ir Ch Opherra of Shantamon	<input checked="" type="checkbox"/>
Combined Canine Club	Mrs K Sjong	Ir Ch Prince Finn of Nutstown	<input checked="" type="checkbox"/>
23/04/2011		Ir Ch Opherra of Shantamon	<input type="checkbox"/>
South Tipperary	Mr D Harris	Ir Ch Osmar of Shantamon	<input checked="" type="checkbox"/>
30/04/2011		Ir Ch Opherra of Shantamon	<input type="checkbox"/>
Fermoy	Mrs L Jorgensen	Ir Ch Prince Finn of Nutstown	<input type="checkbox"/>
01/05/2011		Ir Ch Opherra of Shantamon	<input checked="" type="checkbox"/>
Hound Association	Mr B Clarke	Ir Ch Prince Finn of Nutstown	<input checked="" type="checkbox"/>
02/05/2011		Ir Ch Gulliagh Corrig	<input type="checkbox"/>
Hibernian	Mrs C Bollard- O'Callaghan	Ir Ch Osmar of Shantamon	<input type="checkbox"/>
21/05/2011		Ir Ch Opherra of Shantamon	<input checked="" type="checkbox"/>
Munster Canine	Mr J Byrnes	Cuknocklong Henry Higgins	<input checked="" type="checkbox"/>
04/06/2011		Roxanne of Shantamon	<input type="checkbox"/>
Cork & District	Mrs B Beare	Calcara Brachen	<input checked="" type="checkbox"/>
05/06/2011		Ir Ch Gulliagh Corrig	<input type="checkbox"/>
Irish Wolfhound Club Ch Show	Mrs Outi Piisi- Putta	Rynchanon Spirit in the Sky over Nightwing	<input type="checkbox"/>
12/06/2011		Roxanne of Shantamon	<input checked="" type="checkbox"/>
Swords	Ms J Gagne	Cuknocklong Henry Higgins	<input type="checkbox"/>
18/06/2011		Ir Ch Gulliagh Corrig	<input checked="" type="checkbox"/>
Kilkenny	Mrs C Ahern	Ir Ch Osmar of Shantamon	<input checked="" type="checkbox"/>
25/06/2011		Ir Ch Opherra of Shantamon	<input type="checkbox"/>

Green Star Wolfhounds For 2011

SHOW	JUDGE	GREEN STAR WINNERS	BOB
Deise Canine	Mrs L Cox	Ir Ch Osmar of Shantamon	<input checked="" type="checkbox"/>
26/06/2011		Ir Ch Opherra of Shantamon	<input type="checkbox"/>
Bray & District	Ms L Appleby	Ir Ch Osmar of Shantamon	<input checked="" type="checkbox"/>
02/07/2011		Ir Ch Opherra of Shantamon	<input type="checkbox"/>
Irish Ladies Kennel Club	Mrs M Connolly	Broughadowey Tir Eoghain	<input type="checkbox"/>
09/07/2011		Roxanne of Shantamon	<input checked="" type="checkbox"/>
Sligo	Mr G Nymann	Cuknocklong Henry Higgins	<input type="checkbox"/>
16/07/2011		Roxanne of Shantamon	<input checked="" type="checkbox"/>
Dundalk	Mr J Horswell	Broughadowey Tir Eoghain	<input type="checkbox"/>
23/07/2011		Roxanne of Shantamon	<input checked="" type="checkbox"/>
Bangor & North Down	Mr R Tabuena	Calcara Brachen	<input checked="" type="checkbox"/>
30/07/2011		Tarlog Cuimhne at Killykeen	<input type="checkbox"/>
Dun Laoghaire	Mr P Berchtold	Ir Ch Osmar of Shantamon	<input checked="" type="checkbox"/>
31/07/2011		Ir Ch Opherra of Shantamon	<input type="checkbox"/>
Hound Association	Snr J Blanco	Cuknocklong Henry Higgins	<input checked="" type="checkbox"/>
13/08/2011		Roxanne of Shantamon	<input type="checkbox"/>
Clonmel & District	Mr D Allen	Ir Ch Uella O'Hogan	<input type="checkbox"/>
14/08/2011		Roxanne of Shantamon	<input checked="" type="checkbox"/>
Killarney & District	Mr G Jipping	Broughadowey Tir Eoghain	<input checked="" type="checkbox"/>
16/08/2011		Ir Ch Gulliagh Corrig	<input type="checkbox"/>
Limerick	Mr T Skaar	Broughadowey Tir Eoghain	<input checked="" type="checkbox"/>
18/08/2011		Ir Ch Gulliagh Corrig	<input type="checkbox"/>
Tralee & District	Mrs A Edlander	Cuknocklong Henry Higgins	<input type="checkbox"/>
20/08/2011		Rynchanon Dancin Barefoot	<input checked="" type="checkbox"/>
IKC International Show	Mr G Hill	Ir Ch Cuknocklong Henry Higgins	<input type="checkbox"/>
27/08/2011		Ir Ch Roxanne of Shantamon	<input checked="" type="checkbox"/>

Green Star Wolfhounds For 2011

SHOW	JUDGE	GREEN STAR WINNERS	BOB
Irish Breeds Society	Mr P Hand	Calcara Brachen	<input checked="" type="checkbox"/>
28/08/2011		Tarlog Cuimhne at Killykeen	<input type="checkbox"/>
IKC National Show	Mrs E Drennan	Ir Ch Osmar of Shantamon	<input checked="" type="checkbox"/>
28/08/2011		Ir Ch Gulliagh Corrig	<input type="checkbox"/>
Carlow & District	Mrs O Thomas	Ir Ch Osmar of Shantamon	<input checked="" type="checkbox"/>
17/09/2011		Ir Ch Roxanne of Shantamon	<input type="checkbox"/>
Portadown	Mrs E Jenkins	Calcara Brachen	<input checked="" type="checkbox"/>
15/10/2011		Ir Ch Roxanne of Shantamon	<input type="checkbox"/>
All Irish Bull Breeds	Mr D Walsh	Broughadowey Tir Eoghain	<input checked="" type="checkbox"/>
31/10/2011		Ir Ch Roxanne of Shantamon	<input type="checkbox"/>
Cloghran All Breed	Mr H Jordan	Broughadowey Tir Eoghain	<input type="checkbox"/>
12/11/2011		Ir Ch Roxanne of Shantamon	<input checked="" type="checkbox"/>
Dublin Dog Show	Mrs M Finney	Ir Ch Prince Finn of Nutstown	<input type="checkbox"/>
27/12/2011		Bribiba's Country Dancer	<input checked="" type="checkbox"/>

Mr G.F. & Mrs P. Clarke's Ir Ch Roxanne of Shantamon was Annual Champion 2011
Mr G.F. & Mrs P. Clarke's Ir Ch Osmar of Shantamon and Ir Ch Opherra of Shantamon
are joint runners up.



Green Stars Won by Year

Name	Sex	yr2007	yr2008	yr2009	yr2010	yr 2011	Total GSs
Annuauna of Rathcreevagh at Calcara	B	1	0	0	0	0	2
Baronglen the Knight Walker	D	0	0	0	1	0	1
Bribiba Destiny of Scotland	B	0	2	0	0	0	2
Bribiba's Country Dancer	B	0	0	0	0	1	1
Broughadowey Ah Mhaigh	B	0	0	0	2	0	2
Broughadowey Tir Eoghain	D	0	0	0	0	6	6
Calcara Biggle of Cuaontroime	D	0	0	1	0	0	1
Calcara Brachen	D	0	0	0	0	5	5
Calcara Gra	B	1	0	0	0	0	1
Calcara Horgan	D	0	1	0	0	0	1
Calcara Keeva of Cuaontroime	B	0	0	2	0	0	2
Caredig Fiasco	B	0	0	0	1	0	1
Cufodhla Enya to Uella	B	0	0	0	1	0	1
Cuknocklong Henry Higgins	D	0	0	0	3	6	9
Daniel Cu na Ri	D	1	0	0	0	0	1
Donovan of Nutstown	D	0	4	7	3	0	14
Eboney of Shantamon	B	1	1	0	0	0	6
Fionn of Coote Hill	D	0	1	0	0	0	1
Glor na Gael Ivanhoe	D	0	0	1	0	0	1
Glor na Gael Kendra	B	0	0	1	0	0	1
Gulliagh Albus	D	4	12	2	0	0	18
Gulliagh Ardtully	D	0	1	3	2	1	7
Gulliagh Corrig	B	0	1	2	5	8	16
Gulliagh Hagrid	D	0	1	0	0	0	1
Gulliagh Jill Pole	B	4	3	0	0	0	7
Gulliagh Molly Malone	B	2	0	0	0	0	3
Gulliagh Sequoia	D	4	1	0	0	0	8
King Chieftian of Nutstown	D	1	0	0	0	0	1
King Huzzar of Nutstown	D	10	0	0	0	0	10
Kingfisher of Nutstown	D	7	0	0	0	0	12
Knocknarea Bacchus	D	0	0	2	0	0	2
Knocknarea Neilliagh	B	2	0	3	0	0	5
Lady Ionagh of Shantamon	B	18	24	18	0	0	69
Lagan Bank Lad	D	0	0	1	0	0	1

Name	Sex	yr2007	yr2008	yr2009	yr2010	yr 2011	Total GSs
Maddie Rose of Nutstown	B	0	1	0	0	0	1
Mascotts My Emperor	D	0	1	0	0	0	1
Midnight Emma of Nutstown	B	1	0	0	0	0	2
Milkwood Light My Fire at Ballyadeen	B	0	1	1	0	0	2
Nina-Leigh of Shantamon	B	0	1	2	1	0	4
Opherra of Shantamon	B	0	0	1	21	9	31
Osmar of Shantamon	D	0	0	0	8	9	17
Prince Finn of Nutstown	D	0	0	3	9	4	16
Roxanne of Shantamon	B	0	0	0	0	12	12
Rynchanon Ain't Misbehaving	B	0	0	3	0	0	3
Rynchanon Cowboys N'Kisses	B	1	0	0	0	0	3
Rynchanon Dancin Barefoot	B	0	0	0	0	1	1
Rynchanon One Wild Knight at Nightwing	D	2	4	3	0	0	9
Rynchanon Spirit in the Sky over Nightwing	D	0	0	0	0	1	1
Sinead	B	0	0	0	2	0	2
Tarlog Cuimhne at Killykeen	B	0	0	0	0	2	2
Tibridarn Thane	D	0	0	1	0	0	1
Uella Ardee	D	2	3	3	0	0	8
Uella O'Brien	D	0	0	3	0	0	3
Uella O'Hogan	D	0	4	3	7	1	15
Unknown	B	1	0	1	0	0	9
Unknown	D	0	1	0	0	0	1
Witchesbrook Wirion Caredig	D	0	0	1	0	0	1
Witheld	D	1	0	0	0	0	1

New Champion 2011

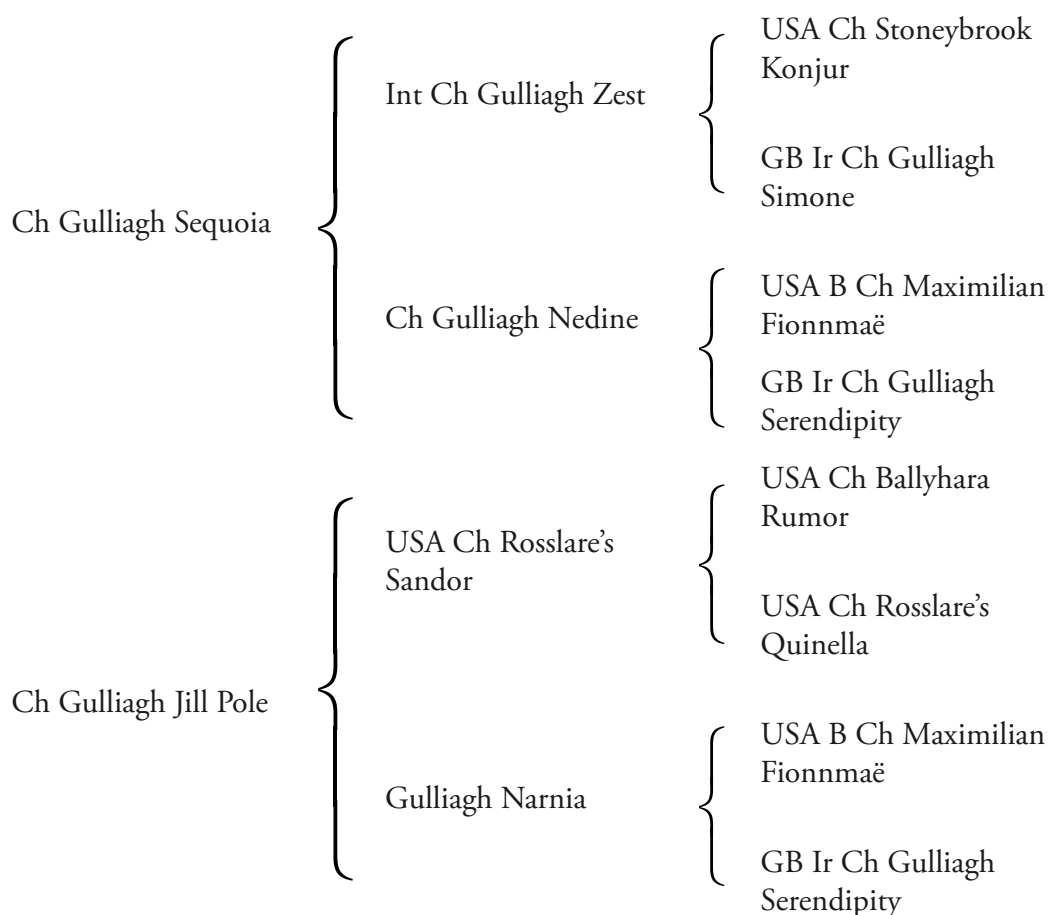


Ch Cuknocklong Henry Higgins

Born: 15th June 2009

Bred by: Mr P. O'Neill

Owned: Mr TN, Mrs MA & Mr I Finney



New Champion 2011



Ch Gulliagh Ardtully

Born: 29th August 2006

Bred by: Mr TN, Mrs MA & Mr I Finney

Owned: Mr TN, Mrs MA & Mr I Finney

Int Ch Gulliagh Zest

USA Ch Stoneybrook
Konjur

GB Ir Ch Gulliagh
Simone

Stoneybrook Kaos

USA Ch Stoneybrook
Sorcier

GB Ch Shadow of
Kilmara

Ch Gulliagh Nadia

Ch Gulliagh Nedine

USA B Ch Maximilian
Fionnmaë

GB Ir Ch Gulliagh
Serendipity

Int NI D L Dk Ch
Cùroí Jazz

NI D Ch Unity
Fionnmaë

GB Ch Shadow of
Kilmara

Ch Gulliagh Nadia

New Champion 2011



Ch Roxanne of Shantamon

Born: 18th April 2010

Bred by: G. F. & P. Clarke

Owned: G. F. & P. Clarke

Baronglen the
Knightwalker

Solstrand Yorick of
Baronglen

Eng Ch Baronglen the
Jaywalker

Solstrand Unity

Eng Ch Baronglen Miss
Jiff

Eng Ch Cefne Eurig of
Baronglen

Baronglen Miss Isobel

Ir Eng Int Ch Lady
Ionagh of Shantamon

Ch Rossa of Nutstown

Ch Nutstown Adare

Rosemary of Nutstown

Betsy of Shantamon

Ch Black Knight of
Nutstown

Titch of Shantamon

New Champion 2009



Ch ROM Ch Glor na Gael Ivanhoe (EW 09)

Born: 10 September 2006

Bred by: Juhász Csilla

Owned: J Csilla & E Tibor

Int Ch IT Ch OST ch
SLO Ch Pergentino
Pimentel de Mangialupi

Wolfhouse Pergolesi

Alice in Wonderland

Wolfhouse Melody
Maker

Wolfhouse Knock out

NL Ch DT Ch LUX Ch
Int Ch Curoi Jazz

Hibeck Sacher

Int Ch SCG Ch SLO
Ch Dunhill's Tara

T Ch Wolfhouse
Mythical

T Ch Cudonnchu Red
Sonya

NORD Ch Wolfsbane
Pre-Eminence Black
Magic
Dan Ch Sixpence of
Milmarra

IR Ch Capitan of
Shantamon

Lucky of Nutstown

A Personal Viewpoint

If the functional type or even a component of type (functional type including shape and structure, outline, proportions, proportional balance, movement, size, substance, coat) changes consciously and of a deliberate reason, it is acceptable in the evolution of the breed, but if these changes occur unconsciously, it is a risk for the breed.

A good example of a conscious change in the breed is the German Pointer whose functional type has been altered because the hunting areas available in Germany have become smaller. The smaller areas available for hunting this breed, caused changes in the use of the breed and this placed different demands on the construction and on the proportions of the breed. The shape of the breed was altered accordingly. Concerning unconscious changes – well – we all know they are many and the results which we see today are not always a pleasure. This should act as a warning for us; if we don't keep the picture of an ideal Irish Wolfhound clearly in mind, we might lose The Type. This would be a disaster for a breed without a real purpose in today's world.

Development always goes forward in waves. This should not matter provided we all share the target clearly in mind; that being how does an ideal wolfhound look? We should have the same idyllic picture in our mind of the essence of Irish Wolfhound type, regardless of what country we live in or the decade in time. Minor variation concerning the conformation of the dog are usually acceptable as long as the final result, the Irish Wolfhound, looks like it should be capable of doing its' original job.

Changes which have happened:

We have an old breed rich in historical references. One of the most important pictures from Irish Wolfhound history, is the young male "Oisian" in Reinagle's painting. While Oisian has his faults, it is important to note that he displays the important and valuable characteristics which make up The Type. He is muscular and impressive in size, bone and attitude. This picture has acted as a model to Captain Graham: "It is what the Irish Wolfhound was and should be." If Oisian should come in a ring AD 2011, he should fit well into the line up, without chatter and commentary from the ringside. Will this still be possible in 20 years or will that be only an optimistic wish of the writer?

26 –The Irish Wolfhound Club of Ireland 'The Irish Hound' 2012

Where are we headed?

Changes are occurring in our breed that concern me about its future. I find a lack of power and strength to be troublesome.

If we compare BOB- & BOS-winners from the 70's, 80's and even from the 90's with today's BOB- & BOS-winners, we can see positive changes on the development of the construction and because of this also better movement. But the biggest change we see is on the strength and power and the development has not necessarily been positive. I want to point out that there still are today many excellent winners with the correct functional type but I think that there are too many Irish Wolfhounds lacking type. That worries me about the future of our breed.

Oisian in the painting is very proud of his tail and the coat is



The Irish Greyhound
painted by
Philip Reinagle (1749 to Nov. 1833)
From
The Sportsman's Repository, John Scott, 1845

not in the best possible condition, but what about the commanding appearance; doesn't he display just what we want to see in our wolfhounds? How many of today's winners have as much bone as Oisian? I should suggest a maximum 50-60 % (I think the percentage is a bit higher in the USA than in Europe). In my estimation, the number of strong hindquarters in our breed is about the same. It is not often we see such powerful and suitable rears in the ring as in Reinagle's wolfhound. – Have we forgotten that these hounds should be big game hunters and in order to do it, both great size and strength are basic characteristics in our wolfhound?

There also is another point which goes hand in hand with the problem of the missing strength. It's the lack of secondary sex characteristics. We have many winning males, when we look at the pictures of them, if we photoshop the "pistols" away, what we have left are nice bitches. We should recognize both the breed and the gender immediately; even if see only a head or if a dog is painted in a green colour. Is this always the situation? I think not. We need more stallion-like, impressive males.

Correct type – looking to the future

Why is this so important? We need to focus on this because we still have excellent specimens of our breed. Strength, size, or type as a whole are elements which are difficult, if not impossible, to get back once lost. If we breed one refined line into one of medium strength, what do we get? Usually a litter

full of refined puppies. They might have correct proportions and they might move well, but are they proper wolfhounds with the strength and power which should be a must for this breed? The excellent specimens of our breed also show us that in spite of their strength and size they can live a long and healthy life.

I'd like to stimulate a discussion about this subject, because I'm afraid there are today too many breeders, and also judges, whose ideal picture of an Irish Wolfhound is more like a tall, rough coated sighthound with nice curves. The typical Irish Wolfhound

should be like the original hounds in our breed strong, but at the same time curvy; robust and with commanding appearance, able to do their original work of hunting and taking down large game.

Outi Piisi-Putta
A breeder and a judge
Finland

Ouborough Irish Wolfhounds.

E V Bourke.

The name "Ouborough" may be familiar to some members of a great kennel from the past. If you ever visit The Natural History Museum on Merrion Square Dublin take a look at their Irish Wolfhound. She is "Acaushla of Ouborough" donated by James V Rank.

J V Rank was heir to the Rank Flour Milling fortune and older members may remember the "Rank's Flour/ Hovis" brand. His brother Arthur set up the "Rank Film" organisation and Rank Zerox photocopies etc.

James & Patsy Rank started their famous "Ouborough" kennels at Godstone Surrey in the 1920's with impressive fully staffed purpose built kennels to breed Irish Wolfhounds and Great Danes. They had many Champions and due to their wealth they were able to keep the breed going during the Second World War whilst most other kennels came to a stop in the U.K.

Ouborough formed a foundation to restart Wolfhound breeding in the UK after the war.

Recently I was looking over my grandfather's papers and came across letters from J V Rank. Rank's had set up a Flour mill in Limerick about 1930 to get a share of the Irish market. But also in Limerick they set up "Lansdowne Kennels" run by John F Bourke for their Irish doggy interests and to look after their "Deeside" Greyhounds.



During this period my grandfather Edward V White was Mayor of Clonmel, Irish Wolfhounds feature on the Coat of Arms of Clonmel. As he was also secretary of most of the local clubs and organisations including the Coursing Club, the Greyhound Track, and ran a Bakery they had much in common.

He could get nominations from J V for the Tipperary Cup at 4 guineas per dog (a good week's wage back then).

Letters might be signed with regards and 'hoping you are in the pink of condition'.

A good doggy saying to finish a letter.