

THE IRISH HOUND



The Irish Wolfhound Club
of Ireland

Established 1925

ISSUE

1984

The Irish Wolfhound

The standard of excellence and list of points in order of merit.

1. *General appearance:* The Irish Wolfhound should not be quite so heavy or massive as the Great Dane, but more so than the Deerhound, which in general type he should otherwise resemble. Of great size and commanding appearance, very muscular, strongly though gracefully built, movements easy and active; head and neck carried high; the tail carried with an upward sweep with a slight curve towards the extremity. The minimum height and weight of dogs should be 31 inches and 120 pounds; of bitches, 28 inches and 90 pounds. Anything below this should be debarred from competition. Great size, including height at shoulder and proportionate length of body, is the desideratum to be aimed at, and it is desired to firmly establish a race that shall average from 32 inches to 34 inches in dogs, showing the requisite power, activity, courage and symmetry.
2. *Head:* Long, the frontal bones of the forehead very slightly raised and very little indentation between the eyes. Skull, not too broad. Muzzle, long and moderately pointed. Ears small and Greyhound-like in carriage. Bite, scissors ideal, level acceptable.
3. *Neck:* Rather long, very strong and muscular, well arched, without dewlap or loose skin about the throat.
4. *Chest:* Very deep. Breast wide.
5. *Back:* Rather long than short. Loins arched.
6. *Tail:* Long and slightly curved, of moderate thickness, and well covered with hair.
7. *Belly:* Well drawn up.
8. *Forequarters:* Shoulders muscular, giving breadth of chest, set sloping. Elbows well under, neither turned inwards nor outwards. *Leg:* Forearm muscular, and the whole leg strong and quite straight.
9. *Hindquarters:* Muscular thighs and second thigh long and strong as in the Greyhound, and hocks well let down and turning neither in nor out.
10. *Feet:* Moderately large and round, neither turned inwards nor outwards. Toes, well arched and closed. Nails, very strong and curved.
11. *Hair:* Rough and hard on body, legs and head; especially wiry and long over eyes and under jaw.
12. *Colour and markings:* The recognized colours are grey, brindle, red, black, pure white, fawn, or any colour that appears in the Deerhound.
13. *Faults:* Too light or too heavy a head, too highly arched frontal bone; large ears and hanging flat to the face; short neck; full dewlap; too narrow or too broad chest; sunken or hollow or quite straight back; bent forelegs; overbent fetlocks; twisted feet; spreading toes; too curly a tail; weak hindquarters and a general want of muscle; too short in body; pink or liver-coloured eyelids; lips and nose any colour other than black; very light eyes.

List of Points in order of Merit

1. *Typical:* The Irish Wolfhound should not be quite so heavy or massive as the Great Dane, but more so than the Deerhound, which in general type he should otherwise resemble.
2. *Great size and commanding appearance.*
3. *Movements easy and active.*
4. *Head, Long and level, carried high.*
5. *Forelegs, heavily boned, quite straight; elbows well-set under.*
6. *Thighs long and muscular; second thighs, well muscled, stifles nicely bent.*
7. *Coat, rough and hard, especially wiry and long over the eyes and under jaw.*
8. *Body, long, well ribbed up, with ribs well sprung, and great breadth across hips.*
9. *Loins arched, belly well drawn up.*
10. *Ears, small, with greyhound-like carriage.*
11. *Feet, moderately large and round; toes close, well arched.*
12. *Neck, long, well arched and very strong.*
13. *Chest, very deep, moderately broad.*
14. *Shoulders, muscular, set sloping.*
15. *Tail, long and slightly curved.*
16. *Eyes, dark.*

Note: The above in no way alters the 'Standard of Excellence' which must in all cases be rigidly adhered to; they simply give the various points in order of merit. If in any case they appear at variance with Standard of

The Irish Wolfhound Club of Ireland

OFFICERS and COMMITTEE 1984/85

President:	Miss N. Twyman
Vice-Presidents:	Mrs. S. Rathbone-Scott Miss I. Walton
Chairman:	Mr. J. Behan
Hon. Treasurer:	Mr. T. Finney
Hon. Secretary:	Mrs. H. Hughes

COMMITTEE:

Mrs. K. Kelly	Mr. T. Redmond
Miss E. C. Murphy	Mr. W. Clarke
Mr. A. Killykeen Doyle	Mr. J. Kelly

EDITORIAL

We have reorganised our magazine so that each issue contains the data for a full year. This issue covers 1984, we hope to continue this idea in the future.

1984 was a very eventful year for our Club. The tragic and sad news of the death of our President, Miss Twyman came as a great shock to us. My own first thoughts on hearing the news were rather selfish. How is the breed and the Club going to manage without her knowledge and guidance? She left us too soon.....

We lost another good friend when John Grogan passed away. John will always be remembered for his good nature and his familiar broad brimmed hat and large voice. Fortunately, we did have some happy and enjoyable events in 1984. Most notable was our Golden Jubilee championship show — we were delighted and honoured to have as our special guest, Mrs. Helen Fottrell, judge of the Clubs first breed championship show in 1934. The presence of this grand lady of dogdom made the occasion unique. Our Jubilee show was totally sponsored by "Windsor Foods Ltd", manufacturers of quality dog foods. Our sincere thanks to Mr. McLaughlin for this very generous gesture. Another very special feature were the fourteen beautiful cutglass vases presented by Waterford Crystal to mark our Golden Jubilee show. It was a joy to view these vases on the trophy stand. Can you imagine how it felt to win one?

Regrettably, we did not have space to use all the material received, nevertheless, everything received was appreciated. A special thanks to Mrs. Yvonne Harris of Auckland, New Zealand, who travelled all that way to present us with two beautiful trophies and three sashes for our show. Our thanks, also, to the Irish Breeds Society for their presentation of the sash for Best Puppy.

Our thanks to Fingallians for providing us yet again with a perfect venue and to their Ladies Club for the lovely meal afterwards. 1984 is Fingallians centenary year, we send

them our Congratulations. Our thanks to all who help make our Golden Jubilee Show such an outstanding success.

Finally, my thanks to Tim Finney and Betty Murphy for helping me put the magazine together. It would have been impossible without their help.

JIM BEHAN

Miss Noreen Twyman, M.R.C.V.S.

President — Irish Wolfhound Club of Ireland



Noreen Twyman died at her home in Waterford on Tuesday, 18th December, 1984. Twymie, or Bunnie, as she was affectionately known, was born in Warwickshire England. Having qualified as a veterinary surgeon in the mid-30's, she came to Ireland to practice and, happily, stayed here, and was a great influence on the development of the breed in Ireland over the last thirty years. Her first professional appointment was with the U.S.P.C.A. in Ulster, and eventually she settled in Comber, Co. Down. In the 1960's, she moved to Dungarvan, Co. Waterford, where she continued to practice and farmed in partnership with her friend, Mrs. Wendy Howell of the famous Whippet prefix, 'Great Circle'.

Miss Twyman was one of the acknowledged breed experts of our time. She did not breed a great number of litters, and it is a measure of her expertise that the Nendrums achieved success worldwide and that she herself was renowned as a breed authority.

Although her family connection with the breed goes back as far as 1928, Twymie got her own first Irish Wolfhound in 1957 from her sister, Mrs. Ruth Jenkins, breeder of the famous Eaglescrag hounds. 'Carol of Eaglescrag' won both her Irish and English championship.

Nendrum, an early monastery situated on Strangford Lough, near her home in Comber, was the prefix that Miss

Twyman selected when she bred her first litter in 1960, Int. Ch. Carol of Eaglescrag to Int. Ch. McGilligan of Ballykelly. This successful combination produced, among others, Int. Ch. Captain of Nendrum, Ch. Carna of Nendrum and Int. Ch. Colin of Nendrum. The latter had a spectacular show career and in the United Kingdom gained his first three Challenge Certificates on three consecutive appearances, including Best in Show at Blackpool. Three years later, Carol was bred to Eng. Ch. Sulhamstead Max producing the renowned Champions Corrie and Connel of Nendrum and Eng. Ch. Eaglescrag Clonroe of Nendrum. Colin, and later Corrie and Connel, played a major part in the advancement of the breed in Ireland in the 1960's. In 1965, Corrie was bred to Eng. Ch. Sanctuary Brave Knight and produced the well-known 'A' litter, which included Ch. Ardgour (foundation of the Gullagh kennel) and Aron, both influential in Ireland, US Ch. Annalea and Ardmore, and Eaglescrag Alice of Nendrum, a wonderful brood bitch who produced several champions at Eaglescrag. Twymie bred her last litter in 1977 (Eng. Ch. Eaglescrag Toby x Carrokeel Karen); two of this litter, Minerva and Moonbeam, now form a valued part of the Athcarne, Tullygirvan and Carrokeel lines.

In her understanding of Irish Wolfhounds Twymie was able to draw on her wide knowledge of other breeds and other animals. Apart from her veterinary experience she was also a successful breeder and trainer of coursing Greyhounds, bred Whippets and pedigree Charolais cattle. In discussing Irish Wolfhounds she would often refer to the construction of Greyhounds. She said that people hoping to develop an eye for their own breed should be in the habit of assessing the conformation of any mongrel or other animal they may see in the street.

As a judge Twymie was a stickler for soundness. Her own best hounds were always super sound. Thereafter, her sure eye took in the whole animal, appreciating balance and disliking exaggeration as much as lack of quality. Her critiques were characteristically unfussy, concise, and straight to the point. She was particularly adept at recognising quality in puppies, and several of her predictions for top honours were fulfilled.

Her judging appointments were too numerous to mention. She was much in demand by Irish Wolfhound Clubs around the world to judge their special events. She judged in most European countries, in America and in the United Kingdom, including Crufts. Recognised at home as well as abroad, she was the unanimous choice of the Irish Wolfhound Club of Ireland to judge our Golden Jubilee Show in 1984. Sadly, she was not well enough to do so. The Irish Wolfhound Club of Ireland was privileged to have Miss Twyman as an active member for so many years. She became a committee member in 1959 and was secretary in the mid 1960s, and was President since 1971. As undisputed breed authority in Ireland Miss Twyman was the keystone of our Club. To most of us who came into the breed in the 1960s, was both mentor and friend.

Twymie liked to take the down to earth approach in most things, and she was not enthusiastic about the romantic

Victorian art or the early mythology associated with the breed. Indeed, a BBC interviewer in the late 1960s, hoping in vain for tales of mist-shrouded antiquity, could only elicit from Twymie, 'Irish Wolfhounds were really just big rough-coated greyhounds'. However, there was nothing dismissive in her attitude towards the responsibilities of breeders. A recurring theme in her presidential address at our Annual General Meetings was that the sole object of breeding should be the improvement of the breed, and, even then, it should only be undertaken if good homes had been arranged in advance — principles which she herself had always promoted by example.

Her home in Dungarvan was the high point on the itinerary of Wolfhound enthusiasts at home and abroad. Here, with her friend Mrs. Wendy Howell, she had a welcome for visitors from near and far. The Club has lost a valued expert, the members have lost a friend.

E.C.M.

The "Nendrum" Trophy"

(IN MEMORY OF "TWYMIE")

Our committee have opened a fund for the above. Donations invited. Send to our Sec. **Mrs. Hilda Hughes**, Spring-Farm, Tramore, Co. Waterford, Ireland.

Profile

Mrs. Hilda Hughes (MOONVOY IRISH WOLFHOUSES)

Hilda & Eric Hughes came to Tramore in 1965 and were so captivated by Spring Farm — an old-world picturesque cottage in a perfect coastal setting that they decided to buy the property and settle here.

Shortly after their arrival, Hilda set out on a search for a typewriter and found — Irish Wolfhounds, the first she had ever seen! Tom & Cherry Cashin had two hounds, Ballykelly Sheehan (Rory) and Ballykelly Gweedagh (Tara). A happy companionship developed between the Cashins, Wolfhounds and the Hughes family, so much so that when the Cashins had to go to the U.K. Rory & Tara came to live with Hilda.



Get together

Whilst living at Spring Farm, Tara had her first litter — a first for Hilda too! She (Tara) was an excellent mother and they (Tara & Hilda) successfully raised all eight puppies. On return, the Cashins gave Hilda her first hound,

Aonvarr of Mount Patrick (Aran). There was another bitch puppy who was a little behind the rest and she too was given to Hilda. She soon flourished, so now there were two hounds at Spring Farm, Aran, a wheaten and Lynn, a black.



Cailin mean oiche

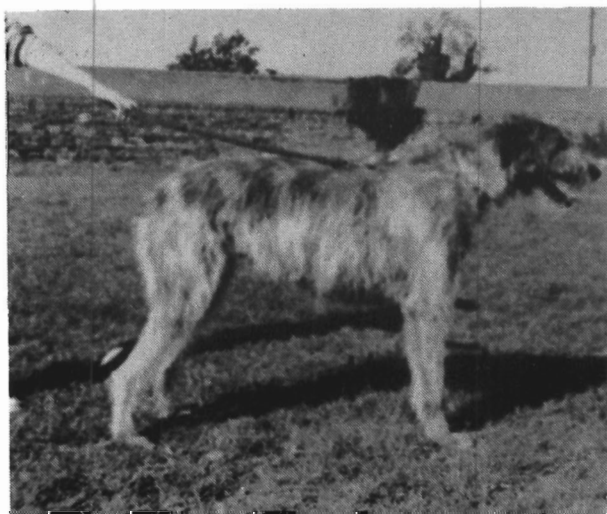


Aonvari of Mount Patrick & Ashling of Mount Patrick at Waterford Show.

Having no knowledge of showing dogs or ring procedure, Hilda and Aran, equally inexperienced, made their debut at the I.K.C.'s Championship Show on St. Patrick's Day.

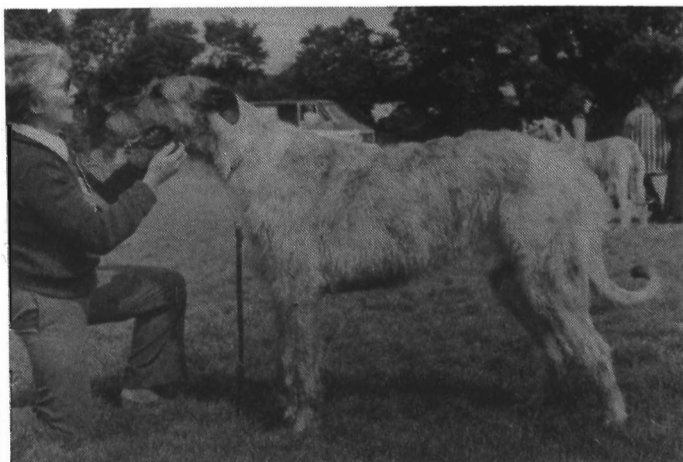
No success in the awards for the gallant pair, but valuable experience gained by both, so that a few months later at Cork Championship Show Aran went on from her Puppy class to win Reserve Green Star Bitch. Owing to her work as a Medical Laboratory Technician at the local hospital, Hilda did not get to many shows; however, she and Aran did have the satisfaction of taking a 1st in Limit class at a later St. Patrick's Day Show and Aran got her first Green Star at Cork Championship Show.

Aran bred her first litter by Tony Doyle's Killykeen Torram in 1970. One of the pups, Cailin mean Oiche was given to Mrs. Cashin, but returned later when the Cashins moved to Spain. Hilda registered her prefix "MOONVOY" later that year.



Irish Breeds Show 1984, "Longstown Summer Glow"
(Cailin)

In 1974 Cailin was bred to Sheelagh Seale's Ch. Ballykelly Reamonn. She had five puppies, one of which Moonvoy Rory Oh Aodha, returned to Hilda as an adult. Rory's offspring attest to his quality as a stud dog and to quote Hilda's own words 'Rory led me a dance in the ring!' Rory's litter sister Moonvoy Triona refused to leave Spring Farm. As a youngster, she went to Capt. Ormond in Co. Tipperary and would not settle she was returned a few days later. Never again would she get into a car — so no shows for her! This was a great pity because Triona was



Moonvoy Rory Oh Aodha

an exceptionally good bitch. Bristling with type and quality, she would easily have made her championship. As it was, her only public appearance was at a Club get-together a few minutes walk from her home — where she was the easy winner of the award for best type. Sadly, this beautiful bitch died a few months ago, she was ten years old. Her brother, Rory died last year. Happily, Hilda now has a young bitch, Longstown Summer Glow (Killykeen Young Torram x Longstown Niamh) carrying her original lines on both sides. We wish Hilda great success with this youngster, who already has two Reserve Green Stars to her credit.

Hilda and Eric hosted two Irish Wolfhound get-togethers, both were much enjoyed by all who attended. Tramore is situated in a scenic part of Ireland, the sunny South-East as the Tourist Board reminds us.

The Irish Wolfhound Club of Ireland is very lucky to have a secretary as dedicated and hard-working as Hilda. The effectiveness and vitality of any club is dependent upon the secretary. Over the past seven years, Hilda has kept things flowing smoothly in her quiet, competent way.

Hilda and Eric personify the ideal Wolfhound owners — and that is the highest praise I can pay to any family. Hilda is totally devoted to the breed, breeding very rarely herself but spending her time helping others in many different ways. To quote her own words 'Wolfhounds have been my life since I first met them'.

E. C. M.

Our Club Badge

Green and Blue Enamel with head reversed in silver now available.

Price £4.00 + 50p Postage & Packing
from Club Secretary



Annual General Meeting

25th November, 1984

The Chairman opened the meeting and welcomed the members. Scrutineers were proposed and accepted as follows:- Seamus Buggle, Mrs. M. McKenna, Jim Lowth.

PRESIDENT'S ADDRESS

As everyone knows our President is ill, so our Chairman, Miss Murphy gave the ideas Miss Twyman had suggested. Miss Murphy read from the Rule Book to point out that the Breed was paramount and we should all remember this. Our President sent her best wishes to all members. The Minutes of the previous meeting were read and signed.

MATTERS ARISING

Mrs. Mernagh reported that the G.A.A. had decided only to hold matches to celebrate their Centenary Year, so the question of adopting the Wolfhound as mascot didn't arise.

TREASURER'S REPORT

The Treasurer presented his accounts and due to the sponsorship of the Club Show by Windsor Foods, our financial position had improved by £400. Mrs. Rathbone-Scott asked for the advertising to be shown separately in future and the Treasurer agreed to do this. The accounts were accepted.

SECRETARY'S REPORT

She thanked the retiring Chairman for her help over the years and the Committee for their help during the year. She reported a healthy demand for back numbers of the Magazine over the year, mainly from overseas and new Associate Members. She said the Magazine was very much appreciated overseas. She went on to repeat what she had said last year — Associate Members must **apply** for Full Membership after Two Years as Full Membership was not automatic, and quoted the Rule passed by the A.G.M. in 1978. She stated that there had been only three applications for Full Membership during the year. She stated that 20 new Associate Members had been accepted during the year.

Our Club Show this year was sponsored by Windsor Foods Ltd. to the tune of £1,500, this was due to the efforts of Mr. J. Behan and our thanks were due to him. Mr. Thorpe had managed to persuade Waterford Glass to give vases for the winners of all classes and a special vase for the Best in Show. Our thanks were certainly due to him. She reported that once again the question of the Standard of our breed came up and The Kennel Club (U.K.) are trying to rewrite the standard. We had been given a copy of the proposed new "standard". A special meeting of the Committee had been held to discuss it and draw attention to the most serious errors in the re-write. The Committee stated that they did not intend to make any alterations to our official Standard and in fact we did not

have the right to do so without holding a Special General Meeting.

The Secretary reported that there had been practically no enquiries for puppies this year and seriously asked members to think carefully before breeding their bitches. The cost of feeding etc, in this time of recession, was possibly the main cause.

She again asked to be advised of changes of address and the presence of puppies for sale.

She mentioned that she heard more from overseas members than she did from members in Ireland.

She stated that as next year, 1985, was the Diamond Jubilee of the Club, she would like to ask all members to make it very special by making every effort to carry out the principles of the Club and to do everything they could do to keep up the standard of our breed as set out in the Duties of Members.

Miss Murphy gave details regarding the breed standard and advised that the American Wolfhound Club and the Wolfhound Club (U.K.) had promised to support our opposition to the EKC rewrite.

At this point, the Treasurer brought up the question of two voting papers from members who were not paid up, these members were not present but it was explained that in one case it was an oversight and the other was a misunderstanding. Friends of the members offered to pay and Mr. Rathbone-Scott proposed that the papers should be accepted. Mr. Redmond seconded. Mrs. Mernagh proposed that this should not be done under any circumstances and finally proposed that in future, no votes should be accepted unless subscriptions were paid **before** the meeting began. Mrs. Rathbone-Scott seconded and this was carried.

RESCUE FUND

Mr. Behan reported that he placed six dogs in the last year and £200 had been spent. He said we would not have as many rescues if breeders acknowledged their responsibilities. Cash was needed, the surplus from the sponsorship had been given to the Rescue Fund. Mr. Redmond said that he gets annoyed, every year we make appeals for homes and help but it is always left to the same few. He appealed for a register of possible homes and asked for more efforts to find them. He said that breeders should take responsibility for their pups and agree to take them back if necessary. He also pointed out the amount of time and travelling etc. Mr. Behan had done for the Rescue Fund and proposed he should be given an honorarium of £100 though it was acknowledged that this would in no way cover his expenses. Mr. Clarke seconded and this was agreed.

It was suggested an advertisement in the magazine for donations to the Rescue Fund.

Members were asked to collect used stamps and to send them to Mr. Irving.

ELECTION OF OFFICERS AND COMMITTEE

President:	Miss N. Twyman
Vice-Presidents:	Mrs. Rathbone-Scott
	Miss I. Walton
Chairman:	Mr. J. Behan
Hon. Treasurer:	Mr. T. Finney
Hon. Secretary:	Mrs. H. Hughes
COMMITTEE:	
Mrs. K. Kelly	Miss E. C. Murphy
Mr. A. Killykeen-Doyle	Mr. W. Clarke
Mr. J. Kelly	Mr. T. Redmond

Mr. Behan assumed the Chair and promised to do his best to follow in his predecessor's footsteps. He commiserated with Mr. Rathbone-Scott. He thanked all who had voted for him and to those who did not vote for him, he hoped to win their confidence over the coming year.

It was stated that the Irish Wolfhound had topped the Sporting (Hound) Group in registrations and the Secretary was asked to write to the I.K.C. and request a simple breakdown of registrations of all puppies. If necessary to pay for the expense involved.

Mrs. Rathbone-Scott reported that Bone Cancer research was being done in England and proposed that a subscription of £100 should be sent. Miss Murphy seconded and it was agreed. The Treasurer agreed to do so. The question of the high cost of postage was discussed and it was agreed that there was no way this could be reduced.

CLUB MAGAZINE

The cost of advertising was discussed. The cost of printing was also discussed and members were asked to supply names of printers whom they thought might be cheaper. The profile in this issue to be the Secretary.



OWNING A WOLFHOUND

These two page leaflets were prepared by the Club for the guidance of people buying their first puppy. They give details of feeding, exercise, etc. No breeder should be without a stock of them.

They are available from

Mrs. Hilda Hughes
Hon. Sec.
Spring Farm
TRamore
Co. Waterford

Appreciation

(of JOHN & ANNE GROGAN) (Fionn-Uisge)

John Grogan died in November, 1984, not quite three years after his sister, Anne. His familiar figure, with his wide-brimmed hat, and readiness with a joke, will be sadly missed.



Daheen

John & Anne were born in Tipperary but lived in their home near the Phoenix Park, Dublin. In Irish, the Park, said to be the largest enclosed park in Europe, is known by the original name, Fionn-Uisge. This was a fitting choice of kennel name for the Grogans whose hounds were walked in the park each day. They were thus Dublin's best known Wolfhounds and were much in demand as models for postcards, fashion photography, etc. Sadly, our magazine had not yet featured the Fionn-Uisge in Profile, so this appreciation is a combination of profile and appreciation. The Grogans also bred Glen of Imaal Terriers.

John & Anne got their first Irish Wolfhound, Aileen of Termon, in 1960. In 1962 they bred their first litter, Aileen to Int. Ch. McGilligan of Ballykelly. This litter produced Daheen of Fionn Uisge and Aileen's later litter to



Anne Grogan & Aileen

Ballykelly Torram, produced Sally of Fionn-Uisce. Daheen and Sally were hounds very special to John, he spoke of them often. They always liked to have a good male among their stock, apart from Daheen, they had Aron of Nendrum and Aron's son, Barney of Fionn Uisce and later Barney's son Fergus of Fionn Uisce. Over the



Fionn Uisce Sally & Aran and right, offspring Aron/ Maol Blarney Siobhan.

years, the Fionn Uisce hounds were blended into most Irish lines and there they will live on. The last Fionn Uisce litter was bred in the mid 1970s.

John was a member of the committee of The Irish Wolfhound Club of Ireland from 1963 to 1973. He was a firm supporter of the breed and all the Club events. Situated so conveniently in Dublin, The Grogans welcomed many, many visitors from overseas, and always had the kettle 'on the hob' and were ready for a chat no matter when one called. In later years, when no longer breeding and able to get to many shows, they enjoyed hearing about the up-and-coming new hounds. John was a strong advocator of the need for good hindquarters in a hound and plenty of strength. Following Anne's death, John took less and less active part in breed events. It was evident that her going left him a very lonely man, even his strong nationalistic feelings seemed to mellow.

On entering room or meeting, John always used an Irish greeting 'God Bless all here'. Another old Irishism describes John & Anne Grogan "They were the heart and soul of good nature".

R.I.P.

E.C.M.



L to R. Cloreen, Brian of Fionn Uisce, Blarney Siobhan, Aran of Niendrum

1984 Golden Jubilee Championship Show

(JUDGE — MR. BEN SIMPSON)



50 years between

Mrs. Helen Fottrell, our judge for the 1934 Ch. Club Show with Mr. Ben Simpson and judge for the 1984 Ch. Show. A unique occasion.

PUPPY DOG (6-12 months) (10 present)

1. Bradley's SABATA COOLHAND LUKE. Good length of neck, good topline and good front. Nice neat eye, well boned with good thigh and second thigh.
2. Ryder's CARROKEEL ARGUS RYDER. Nice pup, could have been better shown.
3. Thorpe's KEEREEN CULIATH. Nice neat dark eye, clean throat. Well boned and good length of tail.
4. Irving's FINBAR EIREANHON.

JUNIOR DOG (6-18 months) (6 present)

1. Bradley's SABATA COOLHAND LUKE.
2. Kelly's CHIEFTAIN OF NUTSTOWN. Nice dog, very attractive, good mover. Near eye, well boned with good length of neck.
3. Phelan's PAN OF CALLAIGHSTOWN. Nice neat eye, clean throat, good bone, good length of tail. Big for his age.
4. O'Halloran's KEEREEN FINNMACCUMHAILL

NOVICE DOG (7 present).

1. Bradley's SABATA COOLHAND LUKE.
2. Seale's BALLYKELLY TO-AGORI-MOU. Nice length of head, could have darker eye. Clean throat, good thigh and second thigh.
3. Murphy's CARROKEEL KALYPSO. Plenty of bone, nice topline, good length of neck. Neat eye and good hard coat.
4. Killykeen-Doyle & Marchment's KILLYKEEN IAN LYONS

GRADUATE DOG (6 present)

1. Kelly's THE EARL OF NUTSTOWN. Real good bone, good tight feet, nice length of head, good muzzle and good hard coat. A longer tail would improve.
2. Murray & Doyle's COOLBREAGH DUALTACH. Real good mover, good length of neck, good legs and feet. Well shown.
3. KILLYKEEN CANUTE. Good bone, could do with more depth of chest. Good coat.
4. Phelan's PAN OF CALLAIGHSTOWN.

LIMITED DOG (3 present)

1. Abbott's ATHCARNE DEALGAN. Plenty of bone. Good length of head, neat eye. Good thigh and second thigh, good feet.
2. Murray & Doyle's COOLBREAGH DUALTACH.
3. Finney's GULLIAGH GWILLIAM. Nice headed dog. Good legs and feet. Nice topline, good hard coat.

OPEN DOG (4 present)

1. Finney's GULLIAGH GALLEON. Real good length of head, dark nose and mouth rims. Good clean straight front. Good rib cage, neat feet and nice length of tail.
2. Abbott's ATHCARNE CIAN. Good topline. Nice length of neck. Little straight in stifle, real good front, good legs and feet.
3. Kelly's CARROKEEL SIR CONNEL OF NUTSTOWN. Good length of neck, good tail carriage. Well coated.



Presentation to Mr. D. Kelly, Chairman of Fingallians G.A.A. Club by our chairperson Miss E.C. Murphy in recognition of this their Centenary Year 1884-1984. Also in picture is our Show Director, Mr. D. McKenna.

PUPPY BITCH (6-12 mths) (9 present)

1. Murray's SABATAHAZEE FANTAZEE. Lovely clean shoulders, real good eyes. Gun barrel front, good topline. I think this bitch has a future.
2. Mitchell's SHAUNEEN NA AONTROIN. Nice topline, good front and feet. Very good coat, good length neck and tail.
3. Walton's TOLKAVALLEY AOIBHINN. Very good coat, good length of neck and tail. Ears flat to head at present.
4. Redmond's ATHCARNE EADOIN.

JUNIOR BITCH (6-18 months) (11 present)

1. Murray's SABATAHAZEE FANTAZEE
2. Mitchell's SHAUNEEN NA AONTROIN.
3. Hughes & Lyon's LONGSTOWN SUMMER GLOW. Nice length of head. Very good bone, legs and feet. Nice reach of neck.
4. Thorpe's KEEREEN LADY.

NOVICE BITCH (8 present).

1. Murray's SABATAHAZEE FANTAZEE.
2. Kelly's SORCHA OF NUTSTOWN. Real good bone. legs and feet. Nice sweep of neck and good length of head.
3. Killykeen-Doyle & Marchment's KILLYKEEN LAURELIN. The desired topline, real good tail set and length of tail. Good bone, good tight feet and good eye.
4. Irving's KRACKEN CONTESSA.

GRADUATE BITCH (7 present)

1. Seale & Hughes' BALLYKELLY KELLY. Good bone, nice topline, nice eye. Tuck-up too slack.
2. Killykeen-Doyle & Marchment's KILLYKEEN WILLOW BROOK. Really good topline, and good bone. Nice length of neck and good straight front, good thigh and second thigh.
3. Mernagh's TOLKAVALLEY OONAGH DUBH. Good neck, good bone and good deep brisket. A little soft in coat.
4. Peiler's LADY OF NUTSTOWN.

LIMITED BITCH (7 present)

1. Seale's & Hughes' BALLYKELLY KELLY
2. Walton's TOLKAVALLEY TORY. Real good coat, good front, good tail carriage and well supplied with bone.
3. Murphy's CARROKEEL ATHCARNE EIMAR. Nice topline, nice length of neck. Good sweep of stifle. Good legs and feet. A longer tail would improve.
4. Thorpe's GALTYSMORE PRIDE.

OPEN BITCH (8 present)

1. Behan's CH BRIGID OF BEARNA BUI. Lovely bitch — map of Erin is all over her. Good length of head, nice reach and neck. Good topline, plenty of bone. Good legs and feet.
2. Rathbone-Scott's TULLYGIRVAN LAIDAIN. Another lovely bitch. Beautifully set up. Good length of head, clean throat, good topline and plenty of bone.
3. Clarke's CH COOLBREAGH ATHCARNE CLODAGH. Lovely clean shoulders and straight front. A typical head. In nice condition. Good length of tail.
4. Finney's GULLIAGH BALLYKELLY CAIT.

VETERAN DOG OR BITCH (3 present)

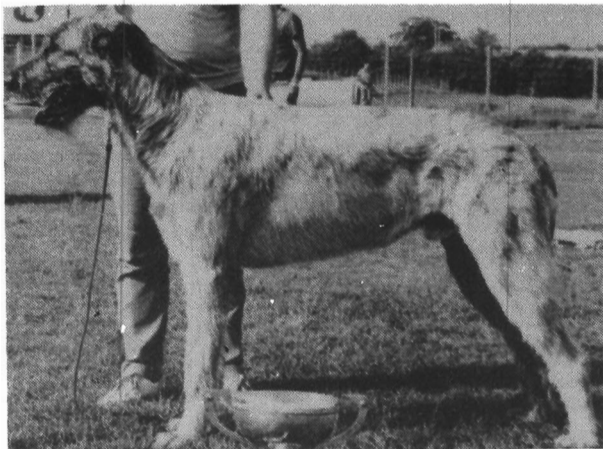
1. Kelly's INT CH NUTSTOWN KING. A great character. Could show some of the young ones how to move. Good bone, good topline and good length of tail.
2. Finney's IR/ENG CH CARROKEEL COILLTE MERLIN. Another good one. Hard to pass. Lots of bone, good small ears and a real good coat.
3. Behan's CH MARY OF NUTSTOWN. Good typical hound, real good mover. A good hound but a little too thin.

BRACE

1. Finney's GULLIAGH GWILLIAM & GULLIAGH GALLEON.
2. Seale's BALLYKELLY TO-AGORI-MOU & BALLYKELLY DHU.
3. Behan's CH; MARY OF NUTSTOWN & CH BRIGID OF BEARNA BUI.



Trophies



Mr. S. Bradley's SABATA COOLHAND LUKE, winner of Donnelly Memorial Cup for Reserve Best of Breed. Killykeen Perpetual Trophy for the best puppy dog at the show, Bournstream No. 1 Cup Best of Opposite Sex to winner of Corcoran Memorial Cup.



John & Kathleen Kelly's THE EARL OF NUTSTOWN, winner of Tullygirvan Perpetual Trophy for best Graduate Dog or Bitch.

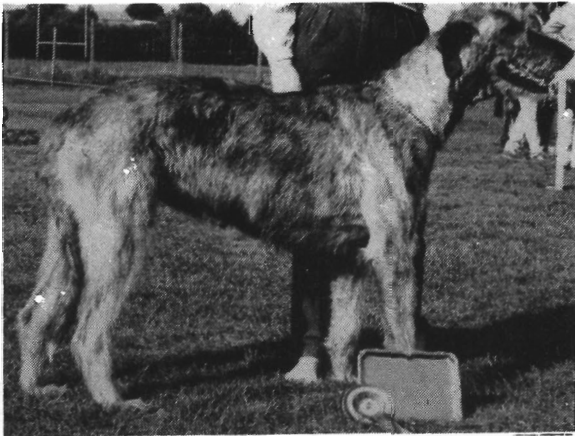


Mrs. Murray's SABATA HAZEE FANTAZEE Winner of Puppy Sash kindly presented by the Irish Breeds Soc. for Best Puppy Dog or Bitch. Maguire Puppy Challenge Cup for the best puppy bitch, Junior Tankard for the best Junior Dog or Bitch, Corcoran Memorial Cup for Best Novice Dog or Bitch.



Mr. & Mrs. Finney's GULLIAGH GWILLIAM & GULLIAGH GALLEON, winners of Brace Class.

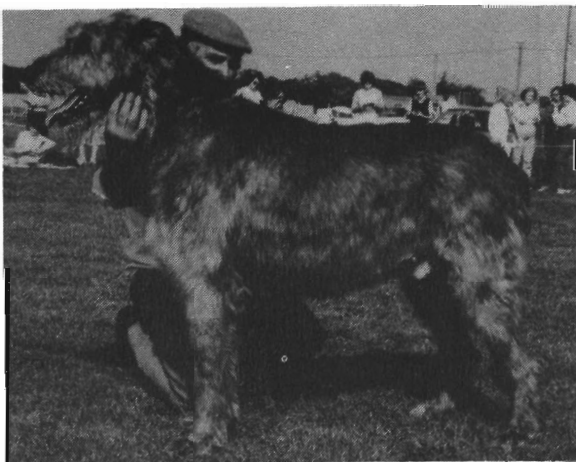
→ T.N. & M.A. Finney's GULLIAGH GALLEON, winner of Res. G.S. Dog. The Rory Memorial Trophy for Best Open Dog kindly presented by Mrs. Yvonne Harris, Auckland, New Zealand, who presented a special sash for Open Dog.



Miss S. Seale & Mr. J. Hughes, **BALLYKELLY KELLY**, winner of New Trophy for Best of Opposite Sex to winner of Tullygirvan Trophy presented by Mr. Seamus Buggle, Tara Memorial Trophy for the tallest and most sound bitch at the show, the Moonvoy Memorial Cup for any Dog or Bitch present at show which has never won a Green Star or C.C. and Res. G.S. Bitch.



Jim Behan's **CH. BRIGID OF BEARNA BUI**, winner of Malahide Perpetual Challenge Cup presented by Lady Talbor de Malahide for the best Irish Wolfhound Dog or Bitch, Maguire Memorial Cup for the Best Movement of Dog or Bitch, the Noel O'Dwyer Trophy for open bitch, the Sorchá Memorial Trophy for Best Open Bitch kindly presented by Mrs. Yvonne Harris, Auckland, New Zealand, who also presented special sashes for Open Bitch & Best in Show.



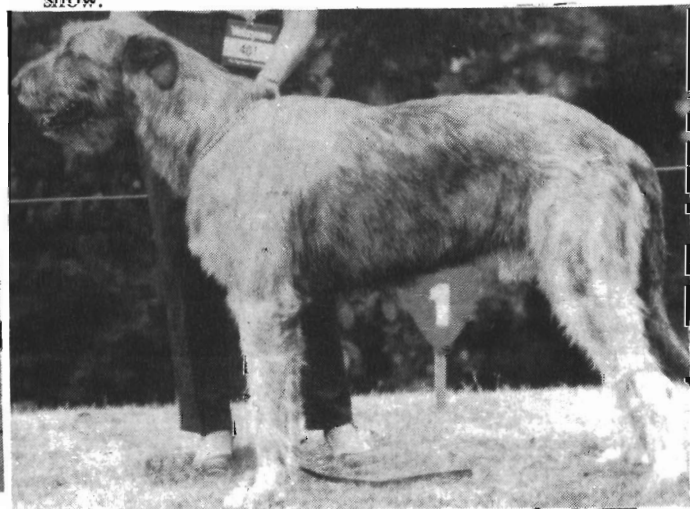
John & Kathleen Kelly's **INT. CH. NUTSTOWN KING**, winner of The Barty-King Memorial Trophy for Best Veteran Dog or Bitch



Mr. & Mrs. T.N. Finney's **IR/ENG Ch. CARROKEEL COILLTE MERLIN**, winner of Beynon Stud Bowl for the dog whose progeny shall be adjudged for best in show.



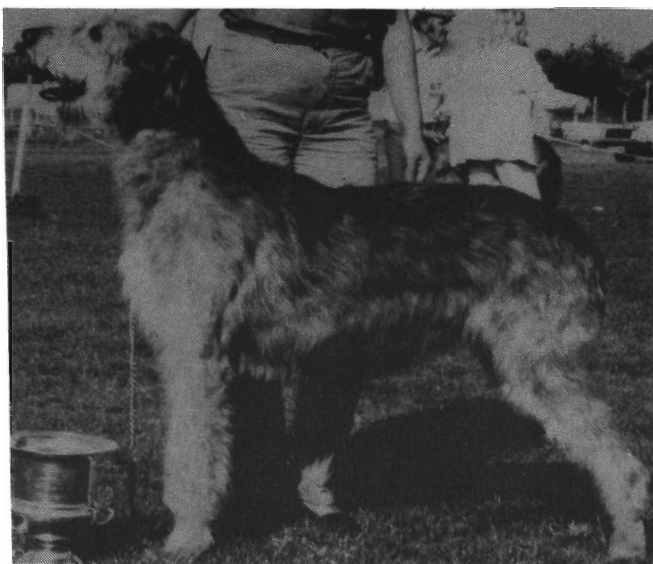
Mr. T. Redmond's **CARROKEEL MOONBEAM OF NENDRUM**, winner of Boróimhe Brood Bitch Cup for the bitch of whose progeny shall be adjudged for best in show.



Mrs. C. Abbott's **ATHCARNE DEALGAN**, winner of Ouborough Cup for best Limit Dog or Bitch.



Mr. G. Pritchard's BALLYKELLY DOOLAGH,
winner of O'Meara Perpetual Challenge Cup for
the tallest I.W. at the show.



Miles & Sue Rathbone-Scott's TULLYGIRVAN
LAIDAIN, winner of The Tullygirvan Points Trophy.



John & Kathleen Kelly's KRACKEN KAISER,
winner of The Carrokeel Annual Trophy presented
to the previous year's Annual Champion.

Irish Wolfhound Club of Ireland

★ REMEMBER ★

The Secretary's Address:—

**Mrs. H. Hughes,
Spring Farm,
Tramore,
Co. Waterford.**

Inform her of a change of address and when you have
puppies for sale.

*For information re Club activities, publications, etc.,
Contact the Club Secretary.*

COPYRIGHT

© IRISH WOLFHOUND CLUB OF IRELAND

All rights reserved. No part of this publication may be
reproduced, recorded or photocopied without the prior permis-
sion of the Secretary of the Irish Wolfhound Club of Ireland.

Articles printed in this magazine represent the opinion of the
authors and are not necessarily endorsed by the Irish Wolfhound
Club of Ireland.

Irish Breeds Society Championship Show 1984



Irish Breeds Society Ch. Show 1984

Our judge, Mrs. E. Thornton (nee Till) with her G.S. and B.O.B. winner Jim Behan's Ch. Brigid of Bearna Bui and G.S. Dog and Res. B.O.B. Tim Finney's Ch. Gulliagh Galleon.

It was a great honour to be asked to judge the breed in Ireland. I have been coming over to watch dogs here for the past 10 years and have been a fervent admirer of the type of and soundness found on previous visits. I apologise in advance for my miserably critical comments. I could soft-pedal, but truth is best between friends. I have concentrated on what appeared to me, on the hounds present and on the day, as weak areas. You don't seem to have any problems with feet, for instance, so the legions of tight-feet attract no comment. Large, white toothed, perfectly fitting bites were very much more in evidence than they are in England. Only a couple had minor incisor faults. I don't go around counting premolars. Missing teeth are on the increase in England, so perhaps the breed will be subjected to a witch-hunt at a later date despite no mention in the Standard. Eyes, now, you have lots of light ones. Perhaps I should define 'light' and, remember, it was a beautifully sunny day. Only two had round, lemon eyes, the rest were on the orange side of hazel which can look even more glaring set against a dark brindle coat. Should I forgive them and call them flame coloured? I think not, the Standard is explicit. Heads in general were long, and balanced skull-to-muzzle with ears set high and nicely rose for the most part.

Movement is always less good than one could wish for. Two particular areas will need thinking about based on the hounds I saw. Firstly "running downhill", fronts and sometimes head carriage drooping in comparison to a higher rump, seen with often a hollow appearance to the topline viewed from the side. Secondly front action, several hounds not only had a definite looseness at pastern, but also brought their forelegs together under the body so far that the inside of each pastern appeared to touch the other, brushing past each other at the trot.

Reach of neck and well laid shoulders were well in evidence. However, a complementing slope to the humerus (upper arm) to set the forelegs under the body was rare. Some hollow chests viewed from the front were directly attributable to this fault. Its certainly not unique to Irish Wolfhounds in Ireland! Depth and breadth of chest do give stamina, which is sometimes overlooked as a quality of our particular brand of hunting hound.

The Standard stresses the need for muscularity in our breed. I hadn't expected to find as many flabby adults in Ireland as I did. Temperaments were good, nothing unduly afraid of me and certainly no hint of aggressiveness towards people.

I do worry about the future of the breed, here as in England. The very best hounds are still the Justice first and second generations, and they are ageing.

PUPPY DOG (5 present)

1. Kelly's CHIEFTAIN OF NUTSTOWN. Near 10 mths.. black, put down in immaculate condition. Trotting around the ring with head high, really driving off his hocks, he has the extra something which catches the eye and holds it. Excels in head, long and well furnished with neat ears and very dark eyes. Plenty of bend of strifle and spring of rib, well grown and boned, strongly muscled. Going over him there is a noticeable dip behind the withers at the moment, and although I made him beautifully true behind I thought he turned a foreleg too far under the body coming towards me. On reflection, this could be a habit caused by leaning in towards his handler and knocking against his side. Should be correctable as he learns ring manners. An easy winner of this class, above the other males until Open came in.
2. England's LOCHREANNTA RED BARON, one week older than 1st and a tall dog again with strong straight bone, not much coat but wiry is promised. Eyes a shade lighter than his red brindle coat. Strong topline, moved reasonably well but too close behind. Shoulder and upper-arm too straight, rather thin across the stifle but hock was low. The width maturity, should bring.
3. Ryder's CARROKEEL ARGUS RYDER, 11 mths. dark grey brindle with plenty of coat of the right texture. Very close to 2nd, finally decided by Baron's smoother movement and longer stifle with lower hock. A well bodied dog with good bone, slightly higher at the croup than in front and puppy-floppy in movement.

JUNIOR DOG (4 present)

1. Irving's Finbar Eireanhon, 14 months cream/brindle. Young dog full of type and quality in body and outline. All curves, beautifully angulated both ends, width all through, movement from the side balanced. One who could gain from becoming fitter, he was weak in a hock and loose in front. Eyes large, worried and light, ears large, bite incorrect.
2. LOCHREANNTA RED BARON.
3. CARROKEEL ARGUS RYDER.

NOVICE DOG (1 present)

1. LOCHREANNTA RED BARON

GRADUATE DOG (1 present)

1. Phelan's PAN OF CALLAIGHSTOWN, 20 mths. Plain headed grey brindle with substance in body, his best 'angle' was moving from the side where he had plenty of drive off his hocks. Going over him, front underangulated, lacks some second thigh, snatched a hock going away, floppy in pastern.

LIMIT DOG (2 present)

1. Kelly's EARL OF NUTSTOWN, 3 years old. This one looked plain and straightish, especially behind where he lacks second thigh. Good body, strong topline. Ran head down, floppy pasterns coming towards me, sound hind action.
2. Finney's GULLIAGH GWILLIAM, 2¾ years, wiry coated dark/brindle. Preferred the look of him at first, more length to his neck and stifles. Weak topline showed up in movement, which was very poor both ways and unco-ordinated.

OPEN DOG (4 present)

1. Finney's IR. CH. GULLIAGH GALLEON. Tall young dog, his brother was in the previous class but this one is in a different league. To quote directly from what I scribbled at the time "best quality, very houndy, mature now, lovely topline, balance, low hock, straight bone. Touch lacking 2nd thigh, tail right." Won this class by a large margin, moved well but made choice for BOB easier by later going less steady behind as the day heated up.
2. Kelly's ENG & IR CH. CARROKEEL SIR CONNEL OF NUTSTOWN. I didn't like this one on my first look, he appeared square in outline and with less scope than his rivals. Began to redeem himself when all bar (1) lost topline, ran with tail in air and/or low head carriage. Connel was not an enthusiastic mover but was sound, and kept tail down. Lightish eye, not the head of 1st, slight mouth fault. Not enough angulation at the rear. A less steep croup, better second thigh and a lower hock would improve him 100%, but I notice his daughters (2nd Junior, 1st Limit) have not inherited this trait. A strong dog.
3. Daly's SARINGAS MR. ARRITAZA, rangy sort of dog, still under 3 so time for more filling out. Light eyes, outline marred by high tail carriage. Apologies for the negative report, I had noted my dislikes and the "likes" have not stayed in my memory.

VETERAN DOG (1 present)

Kelly's IR & ENG CH. NUTSTOWN KING, Res. Green Star Dog and Best Veteran. Nearly nine years of age, and in conformation, size and substance he is still a dog and a half. Remembering him from the days when was campaigned in England, perhaps tired and plodding after the long journey, it was a joy to see him moving freely with head high on his home turf. The only sign of the ageing process is lack of the

hardness of muscle he once had, no doubt this was the reason he now goes close behind. Giving 6 years away to GALLEON, yet ran him close in the challenge. His fault is eye colour, and I must say this did help influence my decision bearing in mind the prevalence of this minor failing in the entry.

PUPPY BITCH (2 present)

1. Clarke's COOLBREAGH BREGA, 8½ mths, dark brindle with eyes to match, most endearing character, tail wagged non stop and a happy confident outlook. What coat she has, so harsh, nice head. Bit long in the leg for perfect balance, perhaps the puppy fat across her ribs added to this impression. Moved very soundly indeed for a baby, with more reach to come, I hope.
2. Finney's HYDEBECK NESSA OF GULLIAGH, my problem child. 6 mths and 10 days, taking her first shot at show business. Very long neck, shoulder set way back, angulation at the rear mind-boggling. Has to grow some to soak up excess, hadn't the slightest idea what her legs were doing when moving. No coat anywhere except faceful of fuzzy puppy whiskers. Eyes light, toning with coat at the moment. A high quality baby.

JUNIOR BITCH (4 present)

All bar 1st plaited or brushed in front, all were close behind.

1. Walton's TOLKAVALLEY AOIBHEANN, 14 mths, red. This little bitch had a lovely head and neck, sloping shoulders, width of chest, good bone and a well carried tail. Rather flat on top and in need of a little more development in hindquarters. Moved better in front than the others, and although close behind had plenty of drive.
2. Thorpe's KEEREEN LADY, cream, nearly 18 mths. Very taken by the outline of this one, although more lightly built than (1). Lean head proudly carried on a most elegant neck, super long stifles with curve and breadth. Short on coat, what there is was wiry. I hope her movement widens with maturity — Will her ears settle down?
3. Mitchell's SHAUNEEN NA AOINTROIN, 14 mths. and less developed for age than the two above her. Again, my notes tail off, saying only that although she moved badly it was better than 4th's, who also had a curly tail. Bone could be stronger on both of them.

NOVICE BITCH (2 present)

1. Buggle's CARROKEEL CLASBY, cream, 20 mths. This was the first bitch whose movement was worth considering for the movement cup, she went truly. Substantial, more second thigh would be an advantage. Eye not dark enough.
2. Lowth's KEEREEN QUEEN OF RUSSFINLOW, 4th Junior class.

GRADUATE BITCH (3 present)

1. Merrydew's FINTARA ANDRASTE, red bitch with matching eye colour, a long headed nicely conditioned one, strong in back and sound. Upper arm is straight and she could do with more second thigh. Better hind action than front, but at least not a 'brusher'.
2. Lyons & Hughes' LONGSTOWN SUMMER GLOW, taller and with more curve to her stifles than (1). One of the very few with too much coat, not silky or woolly, just overlong and due for casting, I'd guess. Light eye. Unsettled in herself, movement loose coming towards me.
3. Irving's KRACKEN CONTESSA, dam of Junior Dog winner, same head and eyes. Very similar outline but failing badly in topline, up behind, in very soft condition and with unsound hind action.

LIMIT BITCH (3 present)

1. Kelly's SORCHA OF NUTSTOWN. I assume her date of birth in the catalogue is a year wrong, if so, she's almost two. Tall iron grey, and a lovely big, typy bitch, soundest up to this point, long easy stride from all angles. Strong true bone, well made quarters, very long tail. Eye needs to be a shade darker, one ear tended to go flat to the head. Close up to Res. Green Star Bitch, where her top and bottom lines looked longer and flatter by comparison with 2nd in Open.
2. Merrydew's FINTARA ANDRASTE. 1st Graduate.
3. Mernagh's BALLYVALLA AOIFE OF MOONVOY, grey brindle, looked more curvy than (2) standing. Did not move as well.

OPEN BITCH (7 present)

A marvellous class. Thank you for bringing these good bitches out for the day.

1. Behan's CH. BRIGID OF BEARNABUI, 5 year old in immaculate condition, enhanced by a wiry close-fitting coat. Lovely head with gentle expression, like (2) she's very grey in the face and looks older because of it. Long, strong neck and a beautifully made front, not only a sloping shoulder but also complementing slope of upperarm and a correct rib-cage. Her chest was broad viewed from the front yet legs tucked neatly under the body seen from the side, exactly as requested by the Standard. Same perfection of construction of the quarters, breadth of stifle, curve of stifle, low hock. Tail is very long and heavily coated to complete the picture. I wondered afterwards whether I have ever gone over a better made hound, I think not. Moved soundly and with perfect balance. I would like to have said she excelled in reach and drive, but was lazy and did barely enough. Best of Breed.
2. Rathbone-Scott's CH. TULLYGIRVAN LAIDAIN. Res. Green Star Bitch. Checking pedigrees later I noticed she has both grandsires in common with (1) Justice & Fintan. Similar to Brigid in both age and looks, this one used everything she has moving and excels in hind action. Since I'm making a big point

about eye colour I should mention that neither has a really dark eye. Two sizes smaller than her rival, this and a more open angle at the upper arm decided this placing.

3. Thorpe's GALTYSMORE PRIDE, taken by her quality, nice head and eye. A tall bitch, not the curves of 1 & 2. Moved very soundly behind, too narrow in front and the pastern fault is there.

VETERAN BITCH (2 present)

1. Behan's CH. MARY OF NUTSTOWN, 8½ years old. Like her B.O.B. daughter, flawless in angulation, she isn't as large or as substantial, however. Lost underline cost her best veteran. Her neck, topline and quarters have the musculature of a far younger hound. Took the movement cup, in profile particularly, she is an object lesson in "easy and active". Most of the hounds I kept aside to watch together in this decision for the Movement cup had high head carriage and strong drive off the hocks. Only Mary had reach in front to equal drive from behind, a ground skimming action which showed no sign of tiring.
2. Redmond's CARROKEEL MOONBEAM OF NENDRUM, looked the winner standing, bigger with heavy bone and better tuck-up. More open angle at the upper-arm than Mary. Very sound, lovely head.

BRACE

Kelly's blacks, half brother and sister ex CH. SARAH OF NUTSTOWN.

Judge: L ELIZABETH THORNTON
(née Till)



A REQUEST FROM U.S.A.

I have received a letter from:

Mrs. M. Adair
115 Whitsett Street
Greenville, S.C. 29601, U.S.A.

She is anxious to correspond with a member of our Club. She states she is a first-time owner of a seven month old Wolfhound bitch and is seriously interested in all details of the breed history etc. She gives the following details of herself She is 35, married with three children, a girl and two boys, aged six, four and one. Her interests apart from dogs are, literature, social issues. She teaches religion at a small Catholic school and is involved in pro-life counselling.

Would anyone like to get in touch with this lady?

H. Hughes

Published in "The Irish Wolfhound Association of the West Coast Newsletter", August, 1984.

Irish Golden Jubilee Championship Show

SWORDS, IRELAND, JUNE 9, 1984.

by Susan Kinloch

Type was what really struck me as I arrived at the 50th Anniversary Championship Show in Swords, north of Dublin. Here were all of these wolfhounds looking like WOLFHOUSES. The next thing that was apparent as I began stroking them was how hard and wiry most of their coats were. Ears were also quite remarkable — small, well-placed, and nicely rosed. Not all, mind you, but far more than you see in the United States. There were a lot of really good rears when viewed moving away but also some overly straight stifles. The fronts were a mix, with problems similar to ours. Unfortunately, gay tails are as common in Ireland as they are in the U.S.A., often spoiling an otherwise handsome profile. There were some shy dogs and a few too inclined to protect their territory — temperament problems we also see here. I was surprised to see so many hounds off their leads, free to wander about as they pleased, yet behaving themselves nicely. You heard a few adults grumble at cheeky puppies — but for the most part all was remarkably calm.

Both grooming and handling were very casual. Some hounds looked unbrushed and unplucked, and would have looked better tidied up a bit. Some of the hounds were handled amateurishly. Although I'm sorry to see how "professional" the Irish wolfhound ring appears at home, some Irish handlers really didn't do the dogs justice. Their gait was spoiled by handlers taking small steps and not training their hounds to work on a lead in various patterns. However, there were handlers with world-class presentation, such as Jim Behan of Bearna Bui and Tony Redmond of Athcarne, plus several others. What impressed me with the judging was that no hound was overlooked because of poor handling, as often happens here, especially under American all-rounder judges. Perhaps our judges feel under too much pressure from tight schedules to bother with the poorly presented dog. The judge, Cairn terrier breeder and all-rounder, Ben Simpson, filling in for Noreen Twyman who had been ill, gave each entry the courtesy and time necessary for a thorough evaluation. It may be that anticipation of the written critique expected in the English and Irish system forces a judge to focus critically on each entry. Although I didn't agree with many of his placements, his patience and caring were in glaring contrast to the lack of consideration we get from many all-rounders.

No disagreement with BOB choice and Green Star Bitch winner, Ch. Brigid of Bearna Bui, bred and owned by Jim Behan, the very capable show manager and secretary. Brigid has everything — she's just smashing in the ring and

moves like the wind. At five, she has had only one litter. I do hope Jim will have one more litter from this curvy lady. As at home, the bitches out-shone the dogs. Another gorgeous lady was Ch. Mary of Nutstown, dam of Brigid and also owned by Jim Behan, bred by Kathleen Kelly. Shown in Veterans class at 8 years she is still lithe and fleet, as her nickname "Beauty" testifies.

The Green Star Dog was 9½ month-old Sabata Coolhand Luke owned by S. Bradley and bred by M. Murray of Northumberland from English and Irish lines. (Dogs cannot be shown at the Irish show unless they have been registered in Ireland). Some grumbling was heard about such a young dog walking away with a Green Star and many tropies — an English dog, at that.

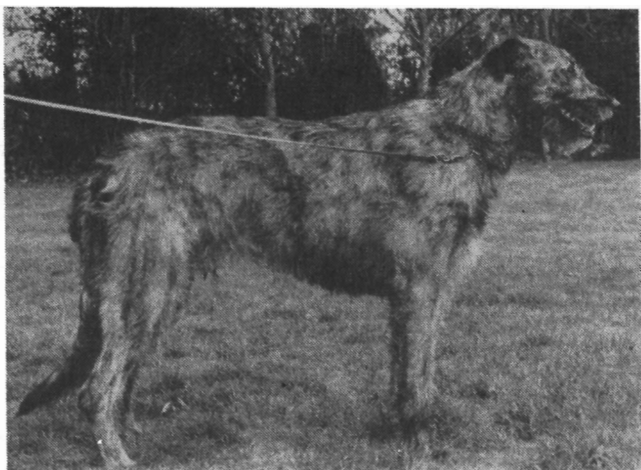
The Irish are wonderful — so friendly and patient with all of their foreign guests. Represented was France, Sweden, New Zealand, England, Germany, and U.S.A. Betty Murphy (Carrokeel), chairman of the Irish club, greeted me very graciously and made sure I knew I was welcome to stay for the dinner at the end of the day; a most lovely and well-organized lady. I was thrilled to be able to meet and talk with Sheelagh Seale (Ballykelly), one of the great ladies of wolfhounds to whom we owe so much. Sadly, her health is poor. "It's not good growing old. You can't do what you'd like". She says this with such a warm and lovely smile people find it hard to believe she's not well. I was very impressed by her kindness and interest in everything about her.

Ballykelly Kelly, owned by S. Seale and J. Hughes was Reserve Green Star Bitch. She's a strong bitch with good movement and a very beautiful head. The height trophy went to another hound of Miss Seale's breeding, Ballykelly Doolagh, a good-looking 35½ inch wheaten dog with a nice bend of stifle and good shoulders, owned by George Pritchard.

Beautiful silver trophies were given but since these can only be kept until next year's show, a prize of special envy was the crystal vase donated by Waterford that went to BOB and every class winner. These would make lovely, very Irish prizes for our own shows. Not only were the prizes donated, the entire show was sponsored by Windsor Foods Ltd. so that all expenses were paid and no fund-raising effort was necessary.

One of the delights of the Irish show was seeing each child take a dog into the ring after the official judging. Unlike the high-pressure of Jr. Handling in our country, this was very informal and relaxed. Adults went in freely to help along the smaller children and the few reluctant dogs. What a way to inspire the continuation of the breed! Ger Redmond told me her boy had waited all day for this part of the show and he was surprised that his name was not in the program. As I watched young Master Redmond in the ring, I felt sure I was seeing the next generation of Athcarne breeders. Betty Murphy made the occasion complete by giving each child an award for their participation.

The Kellys, breeders of Ch. Mary of Nutstown; the Veteran winner, Int. Ch. Nutstown King; and Graduate



Mr. S. Buggle's "Bran", winner of our lure course.

Dog winner, the Earl of Nutstown, were the welcoming hosts to the lure coursing meet the following day at their country home north of Dublin. The Kellys are successful farmers as well as dog breeders, so their dogs have lots of room to gallop in the lovely Irish countryside. Kathleen and John, with the help of some French workers, put on a luncheon for the multitudes. The food was delicious and the welcome warm. How enchanting to see the famous Int. Ch. Nutstown King wander about nuzzling guests and taking the occasional nibble from their plates! A nice hound and a nice day.

BOB and GREEN STAR BITCH — Ch. Brigid of Bearna Bui; Gwernnyfed Lleigus of Carrokeel X Ch. Mary of Nutstown; owned and bred by Jim Behan.

GREEN STAR DOG — Sabata Coolhand Luke; Killykeen Isherwood X Melanteretain of Sabata; M. Murray, breeder; S. Bradley, owner.



Tony Redmond's "Athcarne Fintan"
Runner-up at our lure course

RESERVE GREEN STAR DOG — Ch. Gulliagh Galleon; Eng. Ch. Eaglescrag Lysander x Gulliagh Ballykelly Cait; Mr. & Mrs. T. N. Finney breeders-owners.
RESERVE GREEN STAR BITCH — Ballykelly Kelly; Int. Ch. Nutstown King x Dunleary Eileen Oge; S. Seale and J. Hughes breeders-owners.

PUPPY DOG — Sabata Coolhand Luke.

JUNIOR DOG — Sabata Coolhand Luke.

NOVICE DOG — Sabata Coolhand Luke.

GRADUATE DOG — The Earl of Nutstown; Int. Ch. Carrokeel Sir Connel of Nutstown x Ch. Nutstown Queen; John and Kathleen Kelly, breeders-owners.

LIMIT DOG — Athcarne Dealgan; Athcarne Fintan x Carrokeel Moonbeam of Nendrum, breeder, T. Redmond; owner, C. Abbott.

OPEN DOG — Ch. Gulliagh Galleon.

PUPPY BITCH — Sabatahazee Fantazee; Sanctuary Lugard x Killykeen Miss Harrison, M. Murray and T. Doyle, breeders-owners.

JUNIOR BITCH — Sabatahazee Fantazee.

NOVICE BITCH — Sabatahazee Fantazee.

GRADUATE BITCH — Ballykelly Kelly.

LIMIT BITCH — Ballykelly Kelly.

OPEN BITCH — Ch. Brigid of Bearna Bui.

VETERAN DOG — Int. Ch. Nutstown King; Ch. Ballykelly Errislannan Liam x Ch. Nutstown Queen; owners-breeders, John and Kathleen Kelly.

THE IRISH HOUND

We regret that the first (1972), second (1973) and fourth (1975/76) issues of the magazine are completely sold out.

The following issues are still available:

1974/75	1977/78	1978/79	1979/80
1980/81	1981/82	1982/83	1984
1984 — the present issue			

Price £2.50 per issue

Postage, Europe 50p per issue. U.S.A. 76p per issue

NOSE PRINTS

From time to time the question of identification of puppies/dogs arises and tattooing has been suggested. Following a programme I saw recently on T.V. the idea occurred to me that an easy and simple method for owners/breeders to identify their animals would be NOSE PRINTS! Nose Prints, I understand are unique to each animal as in the case of finger prints to humans and these could be kept for future identification if needed.

H. Hughes

NEW CHAMPION 1983



CH. KRACHEN KAISER (1.7.'80)

Photo: Mr. F. McEvoy

Breeder: Mr. I. Parker. Owner: Mr. & Mrs. J. Kelly

SIRE

Ir. & Nor. Ch. Ballykelly Reamonn

Ch. Ballykelly Errislannan Liam

Balliteer Cara

Ch. Nutstown King

Ch. Boroughbury Justice

Ch. Nutstown Queen

Malatown Lady

DAM

Eng. Ch. Caio of Eaglescrag

Ch. Boroughbury Justice

Boroughbury Thornwick Aran

Coolbreagh Cailte

Fergus of Fionn Uisce

Coolbreagh Ciara

Deirdre of Kilmacdhú

NEW CHAMPIONS 1984



CH. GULLIAGH GALLEON
Owner/Breeder Mr. & Mrs. T.N. Finney

(17.1.'82)

SIRE

Eng. Ch. Fintan of Eaglescrag

Eaglescrag Kestrel

Thornwick Rossan of Eaglescrag

Eng. Ch. Eallescrag Lysander

Sulhamstead Woodside Finn

Eng. Ch. Clodagh of Eaglescrag

Eng. Ch. Conchessa of Eaglescrag

DAM

Boroughbury Justice

Ch. Carrokeel Coillte Merlin

Erindale Vanda

Gulliagh Ballykelly Cait

Ch. Ard gour of Nendrum

Gulliagh Falcarragh

Ballykelly Mary



ENG. & IR. CHAMPION TULLYGIRVAN LAIDAIN

15.1.'80

Owner/Breeder: Mr. & Mrs. M. Rathbone-Scott

SIRE

Eng. Ch. Caio of Eaglescrag

Ch. Boroughbury Justice

Boroughbury Thornwick Aran

Ir. & Eng. Ch. Carrokeel Coillte Merlin

Eng. Ch. Sanctuary Revog

Erindale Vanda

Keady of Eaglescrag

DAM

Eng. Ch. Red Wully of Eaglescrag

Eng. Ch. Fintan of Eaglescrag

Eaglescrag Alice of Nendrum

Ir. & Eng. Ch. Tullygirvan Betsy Caolan

Ballykelly Madigan

Tullygirvan Brig.

Ch. Colleen of Rickenhore



Ch. SARA OF NUTSTOWN
Owner/Breeder: Mr. & Mrs. J. Kelly

(3.2.'79)

SIRE

Eng. Ch. Red Wully of Eaglescrag

Eng. Ch. Fintan of Eaglescrag

Eaglescrag Alice of Nendrum

Gwenfred Lleigius of Carrokeel

Ch. Ballykelly Dalkey

Carrokeel Anwann

Perfect Picture of Carrickmines

DAM

Eng. Ch. Caio of Eaglescrag

Ch. Boroughbury Justice

Boroughbury Thorwick Aran

Ch. Nutstown Queen

Ch. Connel of Nendrum

Malatown Lady

Bernie of Termon

Neck and Neck Placement

by Eva Söderqvist

Having competed several times in group competition this year as well as having seen many of the top hounds of both Ireland and England this head-line issue has kept popping up in my mind again and again. I have read very little about this particular issue but I really think there is more to this than has been paid attention to.

I mentioned the group competition, because I really feel this is where the "problem" starts, but at least in Sweden I have seen it creeping into the breed competition as well — maybe you have experienced the same.

The standard states that the neck of the I W shall be "rather long". Yet again and again we get in our written critics things like "beautiful long neck" or "long elegant neck" — obviously meant as compliments and assets, since these hounds are placed high. The Deerhound standard says neck long, but there has to be a difference between "rather long" and "long". I have seen hounds with perfectly good "rather long" necks being commented upon as having short necks, so I think it is about time to concentrate on not getting the I W neck too long.

On the other hand, if you enter a group ring with a long-necked animal (ANY breed, really!), you can bet they mostly do very well here. I really feel that sometimes group competition tend to wish our dogs to look much the same, i.e. having certain "show qualities" which make them stand out — whether this is according to the breed or not. I have seen Borzois being praised for long necks and proud head carriages (which needless to say have given them flat backs and Collie outlooks instead).

But the standard of the I W also states that the head should be carried high. How can that correspond to a "rather long neck"? Well *that* depends on how the neck flows into the shoulder (and to shoulder well laid back), which brings me to another problem.

I will deal with shoulder angulation first. A *rather* long neck on a steep shoulder and/or a shoulder placed too far forward is bound to look short and stuffy, and no way will than animal be able to carry its head high. On the other hand, you can very well get a hound to carry its head high without a correct shoulder angulation/placement as long as it has a long neck. The neck will then start by bending forwards (like on a Deer) but due to its length it is also possible to press it backwards and then to arch beautifully into the head. Careful trimming can actually take care of the not so good-looking first forward bend — but that does not make it any more correct!

Let us assume that shoulder angulation/placement is correct. The *rather* long neck will now come upward/forward in an angulation corresponding to the shoulder angulation, i.e. slanting. If the long neck would do the same, the hound would be unbalanced, since its head will stick too far forward. So the long neck is not only wrong in actual length but, more important, it is stuck into the shoulders too much from the top (in too steep angulation

towards the back compared to the shoulder angulation) — much like the Poodle neck placement — only in this breed it is correct. Compare one of these Irish Wolfhounds with an almost 90° angle between neck and back to a Poodle and you will see the resemblance. Might be hard to see in a lion-clipped Poodle, but you can feel it.

Now, compare the animals moving, and you will again see the resemblance! A Poodle is *not* supposed to have long, ground-covering movement and neither has an I W with the same neck placement — only *he* is supposed to have it. The result in such an I W will be short-striding in front (often coupled with steep/short upper arm) and if on top of this the rear end is well angulated, the hound will pump up and down to make some use of this angulation. But, it does look "flashy" and thus particularly striking in the big ring. We have to be firm, breeding to the standard, and if this clashes with the judge's opinion in the big ring, rather than re-do the breed I would suggest this for the judge instead.

Eva Söderqvist.

Appreciation from Overseas

Over the years, I have received many letters expressing admiration for our **Club Magazine** and I felt it was time to let the Editors, past and present, and the Magazine Committee know how much their work was appreciated overseas. Hence a few excerpts:-

"It is much appreciated! It is a special treat for us to see the Irish hounds, many of whom are related to our own. Your articles are very well done and enjoyed. Even your advertisements are so much better than their American counterparts!"

"Received the Bulletin (Irish Hound), as always everything came to a standstill until I had read and checked items, pedigrees, etc. Thanks so much, each issue is a thing of joy for a background of the Irish hounds!"

"Many thanks for the magazine, it is treasured in our house and also read and looked at avidly by all our Club members!"

"Many thanks for the magazines, they arrived yesterday and as usual nothing has been done around the house while I read them. My husband did remark that he considered himself lucky to have dinner cooked when he got home from work!"

"I have shared the copy of the Irish Hound with my I.W. friends — they are thrilled to see it".

"I received the five back numbers of the Club Magazine — these are eagerly read cover to cover by I.W. owners here".

The **Club Badge** has also been admired overseas and I quote one of many letters:

"It is really lovely and I was the envy of the Club members here at the next Show — they all admired it".

Hilda Hughes

JUDGES REPORT

Belfast Championship Show

Irish Wolfhounds

My thanks to my steward, Desmond O'Reilly, and also to the exhibitors for making this such an enjoyable day. I was pleased with the general standard of the exhibits, many of the faults which are now so common, such as bad mouths, soft coats, etc. were not in evidence, there were however some light eyes.

JUNIOR DOG

1. Mr. and Mrs. Kelly's CHIEFTAN OF NUTSTOWN, a well grown 11 mth. old dog, good hard dark coat, nice spring of rib, plenty of substance for his age, pleasing head and good general outline, moved a bit close behind and front movement too loose, could improve with age.
2. Mr. and Mrs. Carlisle's CHAPELLEIGH BARUN, quite a good outline, nice head and neck, hind movement rather loose but this is to be expected in a 9 mth. old hound.
3. Mr. & Mrs. Thorpe's KEEREEN CULIATH.

POST GRAD. DOG

1. Miss Seale and Mrs. Hughes' BALLYKELLY TO AGORI MOU, a good sound 3 year old, well sprung ribs, plenty of substance and hard muscle, good coat, nice head and neat ears, moved soundly.
2. Mr. C. J. Walsh's ANNAGHDOWN LATE NIGHT EXTRA OF CHRISKAY, a shapely hound, good strong body with a nice curve over the hindquarters, movement not as good as the winner.
3. Mr. and Mrs. Finney's GULLIAGH GWILLIAM.

LIMIT DOG

1. Mr. and Mrs. Kelly's THE EARL OF NUTSTOWN, good typical head on a strong neck, well developed body and a good coat but did not move as actively as I would have liked.
2. Mr. and Mrs. Carlisle's CHAPELLEIGH BARUN.

OPEN DOG

1. Dog CC, B.O.B. Mr. and Mrs. McMillan's CH. KELLYBOURNE PILOT AT BALLALYN, good outline, plenty of solid muscle, good ears and teeth, nice spring of rib and moved very soundly.
2. Mr. and Mrs. Finney's IR. CH. GULLIAGH GALLEON, a lovely sound animal, good spring of rib, hard coat, good head, he also moved very soundly and was only just beaten by the winner.
3. Mr. J. R. Walsh's CAREDIG RINGER OF CHRISKAY.

JUNIOR BITCH

1. Mr. and Mrs. Thorpe's KEEREEN LADY, good overall shape, feminine head, good feet and nice bend of stifle, her tail spoilt her appearance when moving.

2. Mr. and Mrs. Finney's HYDEBECK NESSA OF GULLIAGH, only 7 mths. old and very much a puppy still, all legs when moving.

POST GRADUATE BITCH

1. Mr. and Mrs. Kelly's SORCHA OF NUTSTOWN, good outline and a lovely head, strong neck, moved well going away but front movement could be better.
2. Mr. Garrett's SARA OF CLINTA, quite a shapely bitch, good head and neck but did not move too well.

LIMIT BITCH

1. and Res. CC. Mr. and Mrs. Kelly's SARA OF NUTSTOWN, a lovely bitch, good outline, hard coat, feminine head, moved very well behind but front seemed to go a little too wide for me.

OPEN BITCH

1. and Bitch CC. Mr. Behan's MARY OF NUTSTOWN, this bitch has a lovely houndy outline, plenty of substance, sound as a bell, very feminine head and moved better than any other wolfhound present, she really stood out even though she was 8½ years old, a really good example of how a sound animal should look. She ran Pilot very close indeed for B.O.B.
2. Mr. and Mrs. Rathbone-Scott's IR. CH. TULLY-GIRVAN LIADAIN, this bitch also has a lovely head and neck, a well developed body and strong without losing her femininity, moved well but when standing her stifles were a little too straight for me.
3. Mr. and Mrs. Thorpe's GALTYSMORE PRIDE.

Judge — JOHN R. BRIGGS



Just a Word

"Don't buy an Irish if you just want a dog.
 This is a giant who will fill your world
 Don't buy an Irish if you can't feed him well,
 Keep a budgie or a tank full of fish.
 Don't buy an Irish if you don't like the rain.
 He needs to walk and gallop, you'll see.
 Don't buy an Irish unless you can cope
 With an off moment glance, which melts you like snow".

George Crossley

Submitted by: Leonard G. Tyzack The Revd. Canon

A Wolfhound Holiday

When my husband, Tim, was invited to judge Irish Wolfhounds at the Sighthound Racing Association Show in Solingen, West Germany, last May, we decided to travel a week earlier and to attend the Dutch Irish Wolfhound Club Jubilee Show.

And so we set forth on April 26th accompanied by Mrs. Sue Rathbone-Scott. We sailed Dublin—Holyhead at 8.45 p.m. and drove through the night to reach Harwich in time for the 9 a.m. sailing for the Hook. After the long drive we were glad to see our cabins. We docked in the Hook at about 6 p.m. and drove direct the sixty miles to Hoenderloo where the show was to be held. My first impression of Holland was the superb gardens; there seemed to be daffodils and tulips everywhere. We arrived late for the reception but nevertheless received a most gracious welcome from the committee of the Dutch Irish Wolfhound Club, and of course Dr. and Mrs. W. de Haan, well known to us in Ireland. The Dutch food was wonderful and the quantities very large (we both gained many extra pounds on the trip). All the exhibitors at the show were staying in small holiday chalets set in woodland in Hoenderloo Park which is a nature reserve. All meals were served in the park in a nearby restaurant.



Geasa's Kelpie Brogana

On Saturday, April 28th, the serious business of judging began with the Junior Irish Wolfhounds being judged by aspiring judges Dr. W. de Haan and Mr. Buitenkamp. The puppies were from three months upwards. Each judge had to give a critique on each hound, and their comments on the winners were relayed over the P.A. in Dutch, kindly translated for me by Irmgard de Haan de Levie and Jip Gersie. There were some really lovely puppies, many, I am sure, with a very happy future ahead of them in the showring. All the puppies behaved excellently, there seemed to be a very good atmosphere amongst all the exhibitors, and it seemed to be rather a family affair with



Geasa's Kane Duke Ben Brogan

family pet being brought along as well as show hounds. Temperament amongst the hounds also seemed very good. Many roamed around freely and I never heard a growl. During the show, the committee very kindly supplied us with light refreshments. On Saturday night there was a barbecue in the restaurant and lots of lively music for dancing to.

After an early breakfast on Sunday morning, back again to the showrings for the judging of Irish Wolfhound dogs by Dagmar Kenis (Solstrand) and bitches by Betty Murphy (Carrokeel). The Deerhounds were judged by Cecily Cox (Dufault). There were about one hundred hounds for the ladies to judge. During the morning I mostly watched the Irish Wolfhound bitches. I was very impressed with several of them; indeed; their owners are lucky to have such good bitches for the future of the breed. Best bitch, and Best in Show, was Geasa's Kelpie Brogana (Brogan Areas van de Ruempol x Geasa's Currish), a 14 month old wheaten, owned by Mrs. E. Swelheim-Kruisinga. Also, during the morning, Cecily Cox judged the Deerhounds, and from what I saw the quality seemed very high. After lunch I watched the males go under the knowledgeable eye of Dagmar Kenis, and saw a few very nice hounds. Coincidentally, the Best Wolfhound dog was awarded to Geasa's Kane Duke Ben Brogan, litter brother of the winning bitch, a very exciting day for their owner/breeder, Mrs. Swelheim-Kruisinga. Best veteran went to the very spritely 8 year old Eaglescrag Lapwing (litter sister to Eng Ch Eaglescrag Lysander and Sp/Port Ch Eaglescrag Liam) owned by Dr. M. P. Overdiep. The winners received the most beautiful rosettes and trophies, and the committee very kindly presented us foreign guests with lovely mementos of the show. The superb weekend was rounded off by a beautiful dinner.

After dinner, we travelled to Amsterdam to stay with Dr. and Mrs. W. de Haan. What a spectacle met us when we arrived in their home — twelve Irish Wolfhounds, a Bouviers, a Sloughi and Honky-Tonky, a Heinz 57 Variety,



Shamrock Erotic-Eileen

all lying happily in the living room. We spent a few wonderful days in Amsterdam sightseeing. It all passed too quickly, but we had to continue to Germany. On the way, guided by Dr. de Haan, we visited Mrs. Swelheim-Kruisinga — again the sight of 14 or so Irish Wolfhounds occupying a large living room, all so very well behaved. We enjoyed afternoon tea and delicious local patisserie, 'Black Balloons' (large, choux buns), without a hound ever raising its head.

After farewells to our Dutch friends, and Sue Rathbone-Scott and Betty Murphy, who were returning to Amsterdam, we continued to Germany, we thought, a mere two hours drive, but we got lost and it took us about 5 hours, arriving very late for dinner in the Oelmühle Kennels. Set in the most beautiful countryside, the house is a converted two hundred year old, semi-timbered mill, reminiscent of English Tudor and surrounded by wonderful, natural gardens. The kennels are along the mill stream, where about twenty Irish Wolfhounds, a few Deerhounds and Border Terriers live. As in our own home, the Yorkshire Terriers live in the house.

We had a few enjoyable days in Germany sightseeing and shopping in Cologne and Dusseldorf, and on May 5th, Tim judged in Solingen. The show was held in, I believe, the oldest flapper track in Germany. Everything was excellently organised by Mrs. Barbara Heidkamp, herself a very well known greyhound exhibitor. A very large ring was provided for the Irish Wolfhound judging. Although Tim speaks some German, the committee supplied him with a secretary/interpreter to translate and type his critiques on each hound on the spot. There was an entry of forty-six Irish Wolfhounds, providing Tim with a full day's work. As in Holland the standard was high with some very impressive hounds. Best dog and BOB was from Belgium, Elias van der Dampoort (Ch. Ard Ri Aloha x Ch Royden



Elias van de Dampoort

Glenda), owned by Paula Brughmans. Best bitch went to Shamrock Erotic — Eileen (Ch Shamrock Amoral-Abbot x Eaglescrag Barley) owned by Wilfried Wiesel. After the show there was a large buffet dinner and lots of jolly German music for dancing to in a marquee, which I believe, went on to 5 a.m.

On Sunday morning we again visited the track to see lure coursing for Afghans, Whippets and super little Italian Greyhounds — quite a sight and a lot of fun. In the afternoon, we travelled back to Holland to catch the night ferry to England, and so home.

A very special thank you to our Dutch and German friends for a truly wonderful and memorable Wolfhound holiday!

Marion Finney

Sweden 1984

The breed has been most successful this year in competition with the other sighthound breeds as well as with all breeds in the breeder's competition.

4 hounds have gained their Int title this year. INT CH WOLF TONE GYLLA bred and owned by E & L Janzon finished Top Winning Wolfhound this year as well as winning the Specialty for the 3rd time, this year under American judge Mr. Samuel Ewing III, Eagle Kennel. She was also placed a couple of times in the sighthound group with runner-up at Örebro Int as her best result. To Irish readers it might be of interest too that she is by Int Ch. Eaglescrag Viking and thus half sister of the Janzon bred Rurik Viking of Solstrand, now with Betty Murphy in Ireland.

INT CH CLANSMANS MANIAC MASTER also won his title this year, finished best dog and had the most success in group/BIS competition. He won no less than 4 groups,

twice at all breeds show, where he also finished runner-up BIS. He is bred and owned by Högberghs ex Ch Petasmeade Fennian out of Int Ch Clansmans Silly Sallie, who at 9 years of age is looking her very best and has done a lot of winning at veteran level.

INT CH CLANSMANS CAYENNE CHAP ex Ch Clansmans Spilly Spandy out of Int Ch Petasmeade Beth, bred by Högberghs and owned by I Kristensson, also gained his title this year. He has had a hard time fighting off Maniac Master in the breed but has actually beaten him on two occasions.

INT CH WESTMOUNT KIM BIBA, bred and owned by Söderqvists, has mostly been competing for the Westmount breeder group this year, thus having to fight off some of their best bitches. When finally rid of Dixie at Stockholm Int she not only won the breed but went all the way to top the hound group in the best of competition. This was her 4th group win, the other 3 won before 3 years of age. Kim is by Ch Corrigan out of Ch Buckhurst Guinevere.

Dixie, INT CH WESTMOUNT DIXIE D'Or, bred and owned by Söderqvists, also had a most successful year, winning one group and being placed several times, once as runner-up. She is by Int Ch Mountbanks Atticus out of Ch Buckhurst Guinevere. At 5½ years of age she has also started to prove her breeding value — all of her first litter by Ch Zarameg Aramis at Franshaw (3 bitches) have won certs, 1 has the double title Swedish Norwegian Ch, another one her Swedish title. Out of her second litter by Ch Mochras Valentinian, the bitch Westmount Xie-Xie at her home kennel won a Junior BIS all breeds — her brother is now in England, Westmount Xile of Mochras.

The Swedish Kennel Club magazine, Hundsport, started a year around competition of breeder groups last year. It has been a most popular contest with lots of groups competing. The competition is based on a group of 5 dogs, entered at the show in question, all bred by the same person(s). The groups firstly compete in the breed, the honoured ones go on to final BIS competition with other breeds and points are rewarded for the first 5 groups. Kennel Westmount had 6 groups out, all of them placed among the final 4, twice as BIS and once as runner-up. This made this Wolfhound kennel 3rd top breeder on this list of all breeds.

So the breed has had a most notable year also outside breed circles. Another event in the breed was the starting of a new magazine, Varghundsmagasinet, equivalent to the English magazine (i.e. not Club bound). Editors Eva Söderqvist and Marianne Hansson aim to give a broad international aspect to the breed (the Christmas issue for instance covering The Irish Breeds show with judge Mrs. Thornton commenting). Subscribers are most welcome — we translate everything into English.

Finally something of Irish interest, i.e. a little about what Irish hounds here and in Finland have been up to lately. In Sweden two Irish exports have been seen this year, CH BOYLE MIST by Ir Ch Carrokeel Sir Connel of Nutstown, bred by J Fraede and owned by kennel Tarlach, S & E Carlsson. When the Irish Bassett judge Mrs. Gillian Mc Dowell judged here this year, she (of course without knowing beforehand!) managed to spot the only two Irish

exports competing at the moment, among them Boyle Mist, who went BOB and 3rd in the Group.

The other one was junior CU NA MARA OF NUTSTOWN by The Earl of Nutstown out of Derryquinn Aoife of Nutstown, bred by the Kellys of course and owned by E Ekholm. He went Best junior of Breed. This young dog also has a BIS-placing (3rd) as a junior this year at an all breed national show.

Boyle Mist has been used at stud and some of his progeny has been competing this year, most of them still as puppies or juniors, so we will see next year what happens to them. These are the only two Irishmen in Sweden right now, but some of the older ones still live on in 2nd generation. Ch Conor Mc Nessa of St Doulaghs, who lived to a good 10 years of age (even surviving a torsion operation at 9 years) had some litters in Sweden, one of them out of Ch Buckhurst Guinevere, who then lived with his owner Cecilia Ebbesson. One of these bitches (as well as B Guinevere) later came to live at kennel Westmount — Artara was judged here at our Club show by Betty Murphy, who placed her runner-up bitch to BIS-winning Gylla. She has 2 certs and will at veteran age (7 years) next year try for that important 3rd one. Artara has been bred at Westmount, first to Ch Corrigan where she produced Ch Westmount Jasper O'Loegaire and his cert-winning sister W Aife O'Hara. 2nd litter only produced one bitch, 3rd one was by Ch Mochras Valentinian out of which Westmount Wanda Witch remained in her home kennel, so these lines are bound to continue.

Finland has certainly more Irish imports than the other Scandanavian countries. I admit to not having full knowledge of what has happened to them all — I know that both "the old ones" Ch Ballykelly Rogan and Athcarne Bran have champion offspring. The more recent import Marion of Nendrum, however, I know a little more about. She was bred to Int Ch Eaglescrag Viking and produced Finnish champions. One of them Killytobin Rosabel gained her Int title this year. Unfortunately we rarely see the Finnish hounds are our show (and the reverse trip for us is equally expensive!).

I would like to end with some comments on the Border Counties Hound Show, which I was fortunate enough to visit and then FINALLY managed to see many of my Irish favourites live. I had a most enjoyable time chatting with the Kellys, the Behans and the Finneys who were all most friendly and sensible. And their LOVELY hounds — I really think you are to be congratulated to have bred beauties like Ch Nutstown King, Ch Mary of Nutstown, Ch Gulliagh Galleon and last but NOT least my absolute favourite in the Wolfhound world Ch Brigid of Bearn Bui! What gorgeous hounds, and the puppies shown to me by Gulliagh and Nutstown tell me that we can certainly expect more to come! Another thing I envy you is your access to so many knowledgeable people topped by Betty Murphy — one of them is leading your Club now too! I want to wish Jim Behan good luck with his new task!

Best regards,

Eva Söderqvist.

Green Star Winners 1983

SHOW	JUDGE	GREEN STAR WINNERS	G.S. VALUE
I.K.C.	Mr. D. McCarthy	Kracken Kaiser	B.O.B. 9
		Athcarne Neesha	7
Combined Canine	Mr. P. Crowley	Kracken Kaiser	B.O.B. 6
		Sara of Nutstown	5
Munster Canine	Mr. T. Agnew	Kracken Kaiser	B.O.B. 3
		Sara of Nutstown	3
Irish Wolfhound Club	Mrs. A. Argyle	Athcarne Cian	B.O.B. 10
		Killykeen Miss Till	6
Cork Summer Show	Mrs. M. McCarthy	Kracken Kaiser	B.O.B. 6
		Sara of Nutstown	3
Swords	Mr. K. Thornton	Int. Ch. Carrokeel Coillte Merlin	B.O.B. 10
		Tullygirvan Liadain	4
Bray	Miss I. Walton	Gulliagh Galleon	B.O.B. 10
		Coolbreagh Onora	3
Drogheda	Mr. T. Redmond	Kracken Kaiser	B.O.B. 2
		Sara of Nutstown	1
Monkstown	Mrs. P. Bennett	Gulliagh Galleon	B.O.B. 10
		Sara of Nutstown	2
Cork & District	Mr. K. Stevenson	Kracken Kaiser	B.O.B. 2
		Sara of Nutstown	2
Clonmel	Mrs. A. Sanchez	Gulliagh Galleon	B.O.B. 3
		Sara of Nutstown	3
Killarney	Miss B. D. Taylor	Kracken Kaiser	B.O.B. 3
		Deenagh Queen	3
Limerick	Miss E. C. Murphy	Gulliagh Galleon	B.O.B. 4
		Gulliagh Ballykelly Cait	4
Tralee	Mr. R. Bebb	Kracken Kaiser	B.O.B. 4
		Sara of Nutstown	4
Bull Breeds	Mrs. M. Whelan	Ch. Kracken Kaiser	B.O.B. 5
		Tullygirvan Liadain	1
Irish Breeds	Mr. C. Taylor	Ch. Kracken Kaiser	B.O.B. 10
		Tullygirvan Liadain	8
Sporting Breeds	Mr. R. Harron	Ch. Kracken Kaiser	B.O.B. 8
		Tullygirvan Liadain	3
Hibernian	Mr. D. McCoy	Int. Ch. Carrokeel Sir Connel of Nutstown	4
		Tolkavalley Tory	B.O.B. 4
Dublin Dog Show	Mr. W. Thompson	Gulliagh Galleon	B.O.B. 4
		Tullygirvan Liadain	2

Best in Show Wins:

Monkstown All Breeds Ch. Show

Gulliagh Galleon

Hound Group Wins:

Bray & District All Breeds Ch. Show

Gulliagh Galleon

Cork Summer Ch. Show

Kracken Kaiser

Annual Champion 1983:

Kracken Kaiser

Runner-Up

Gulliagh Galleon

Green Star Winners 1984

SHOW	JUDGE	GREEN STAR WINNERS	G.S. VALUE
Munster Canine	Mr. A. Killykeen-Doyle	Killykeen Young Torram	1
I.K.C.	Mr. A. Watson	Tullygirvan Liadain	B.O.B. 4
Combined Canine	Mr. J. Behan	Gulliagh Galleon	9
Hibernian	Mrs. O. E. Simpson	Sara of Nutstown	B.O.B. 9
Fermoy	Mrs. P. Heerkens-Verschuuren	Athcarne Fintan	5
I.W.C.	Mr. B. Simpson	Tullygirvan Liadain	B.O.B. 5
Cork Summer Show	Mr. A. G. Beare	The Earl of Nutstown	3
Swords	Miss J. Dove	Tullygirvan Liadain	B.O.B. 6
Munster Canine	Miss M. Martin	Killykeen Young Torram	B.O.B. 4
Kilkenny	Miss. M. Crowley	Tullygirvan Liadain	4
Drogheda	Mr. W. Clarke	Sabata Coolhand Luke	10
Bray	Mr. M. Rathbone-Scott	Ch. Brigid of Bearna Bui	B.O.B. 10
Carlow	Mrs. B. Wilton-Clark	Keereen Culiath	1
Dundalk	Miss S. Seale	Galtymore Pride	B.O.B. 1
Monkstown	Mr. J. Kelly	Int. Ch. Nutstown King	B.O.B. 10
Clonmel	Mr. P. Whitaker	Ch. Tullygirvan Liadain	7
Killarney	Mrs. K. Kavanagh	Ch. Gulliagh Galleon	3
Limerick	Dr. A. E. T. Sneedeen	Ch. Tullygirvan Liadain	B.O.B. 8
Tralee	Mrs. M. Knowles	Chieftain of Nutstown	B.O.B. 10
Bull Breeds	Mr. N. White	Galtymore Pride	4
Irish Breeds	Miss E. Till	Ch. Gulliagh Galleon	6
Dublin Dog Show	Mr. T. Finney	Ch. Gulliagh Galleon	B.O.B. 6
		Shauneen na Aontrim	B.O.B. 4
		Int. Ch. Carrokeel Sir Connel of Nutstown	
		Tolkavalley Tory	4
		Ch. Gulliagh Galleon	8
		Ch. Sara of Nutstown	B.O.B. 8
		Ch. Gulliagh Galleon	8
		Ch. Tullygirvan Liadain	B.O.B. 8
		Ch. Gulliagh Galleon	2
		Ch. Tullygirvan Liadain	B.O.B. 5
		The Legend of Nutstown	B.O.B. 7
		Ch. Sara of Nutstown	6
		Chieftain of Nutstown	5
		Sorcha of Nutstown	B.O.B. 5
		Chieftain of Nutstown	B.O.B. 5
		Sorcha of Nutstown	5
		Downwares O'Sullivan	B.O.B. 4
		Sorcha of Nutstown	3
		Ch. Gulliagh Galleon	4
		Sorcha of Nutstown	B.O.B. 10
		Ch. Gulliagh Galleon	10
		Ch. Brigid of Bearna Bui	B.O.B. 10
		Killykeen Young Torram	B.O.B. 5
		Tolkavalley Tory	5

Best in Show Wins:

Kilkenny All Breed Ch. Show.

Hound Group Wins:

Munster Canine Assoc. Ch. Show

Monkstown Ch. Show

All Ireland Bull Breeds Ch. Show

Annual Champion 1984:

Ch. Gulliagh Galleon

Runner-up Int. Ch. Tullygirvan Liadain.

Chieftain of Nutstown

Tullygirvan Liadain

Ch. Tullygirvan Liadain

Sorcha of Nutstown

Where the Past and the Present Meet

(submitted by E. C. Murphy)

My trip to the Natural History Museum in Bern, Canine Research Section, will remain as one of the most interesting experiences of my life. My grateful appreciation to Mr. & Mrs. Remy Erath for arranging the visit and taking me there.

My previous knowledge of the late Prof. Studer of Bern was his study of the excavated specimens of Irish Wolfhound skulls and bones. I found his opinion, that the hounds of Captain Graham's time were more slender and elongated than the pre-historic ones of great interest. Although already well known, a reprint of his findings might be of interest to some. The following is taken from THE IRISH NATURALIST, September, 1924, written by R. F. Scharff, B.Sc., PH.D. The September article was continued from the August issue. In the first issue he noted:

"The remains of a hound from a Bronze Age deposit were discovered in a crannog at Lough Gur in County Limerick. It is now in the National Museum in Dublin, and was identified by Studer as CANIS FAMILIARIS INTERMEDIUS".

The next issue continues:-

"Several skulls of a large wolf-like dog were discovered in a crannog near Dunshaughlin in County Meath and first identified by Sir William Wilde as those of the Wolfhound. These skulls are in the National Museum in Dublin. They were subsequently examined by Prof. Leith Adams, who commented on their extreme likeness to those of Wolves. Yet he decided that they must have belonged to a breed of dog similar to the Scottish Deerhound. More recently casts of the same skulls were submitted to Prof. Th. Studer, of Berne, who pronounced them to belong to the Irish Wolfhound. By comparison with skulls of the modern breed, such as that of Capt. Graham of Dursley, or H. Walker of St. Moritz, he found the modern more slender and elongated than the pre-historic ones, but clearly of the same variety. He expressed the opinion that the ancient Wolfhound might have reached a height of over a metre (that is to say 39 inches) at the shoulders. He also stated that the skull of the Scottish Deerhound shows an agreement in shape and form with that of the Irish Wolfhound, but that it is somewhat more elongated and more slender.

Many authorities have commented on the very close relationship of the Irish Wolfhound to the Wolf, and some even doubt whether any valid and reliable distinction between the skeletons of dogs and Wolves can be found. Studer, however, first drew attention to a peculiarity which always seemed to distinguish dogs and Wolves from one another, and that is the position and shape of the eye-sockets. The eyes in the Wolf are placed somewhat more laterally than in the dog, with the result that they alter its whole physiomy. In the skull this fact becomes apparent

by measuring the angle between the plane of the orbit and that of the brow by means of the clinometer.

It was a rare experience to be able to study the bones and skeletons of our own and other breeds at the Museum. The exhibits are not on display so I am indebted to Dr. Nussbaumer for his time and patience in bringing out the various items of interest. Having satisfied my interest in the Irish Wolfhound, he was kind enough to show me the skulls of the Irish Terrier and Kerry Blue.

My excitement and amazement at seeing so much interesting material appeared to suspend my common sense. Looking at miniature skulls of well known breeds, I asked with a mixture of fascination and horror, "How did you get them that small?" Looking at me first to see if I was serious, Dr. Nussbaumer replied "they are the skulls of the new born puppies". After that I thought before I spoke. At my request Dr. Nussbaumer kindly wrote the following article for our magazine and supplied the photographs.

The Albert-Heim Foundation at the Natural History Museum in Bern, Switzerland — A Scientific Institution for Canine Research

(by Marc. A. Nussbaumer, Ph.D.)

Probably few people know of the connection between the Natural History Museum in Bern and canine research, beyond the fact that the world-famous Saint Bernard dog, 'Barry', is exhibited there. Fewer still know that the museum is the seat of the 'Albert-Heim Foundation for Canine Research'. This foundation is unique in the world and already has an existence of over fifty years.

In the following we will first recall the very beginnings which date back even further into the last century. We will then disclose the situation as it presents itself nowadays, and we will try to show our aims with a few examples of the kind of scientific work that is being done at the museum.

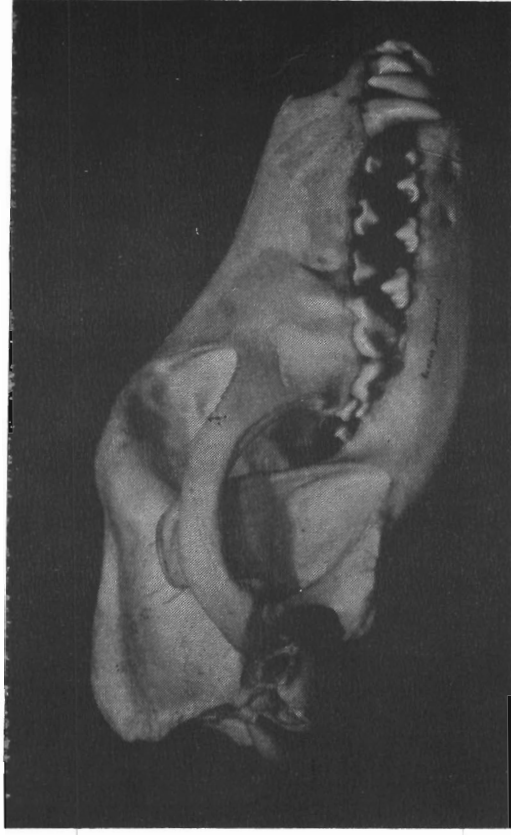
The Beginnings

At the end of the last century, during great hydrological correction works when the levels of some of the Swiss lakes in the midlands were lowered by a couple of metres, several neolithic sites were discovered where once used to be the shore. Among other archaeological and archaeozoological objects quite a lot of remains of early domestic dogs were found. These early companions of our ancestors were soon to be known as 'canis familiaris palustris' in professional circles. All remains of these dogs — mainly the well preserved skulls — were brought to the Natural History Museum where the then Professor Th. Studer worked and published on them. In order to compare these neolithic dogs with modern breeds and with primitive dogs such as the Dingo and the Shensi, he began to enlarge his collection by the addition of skulls of present-day dogs.

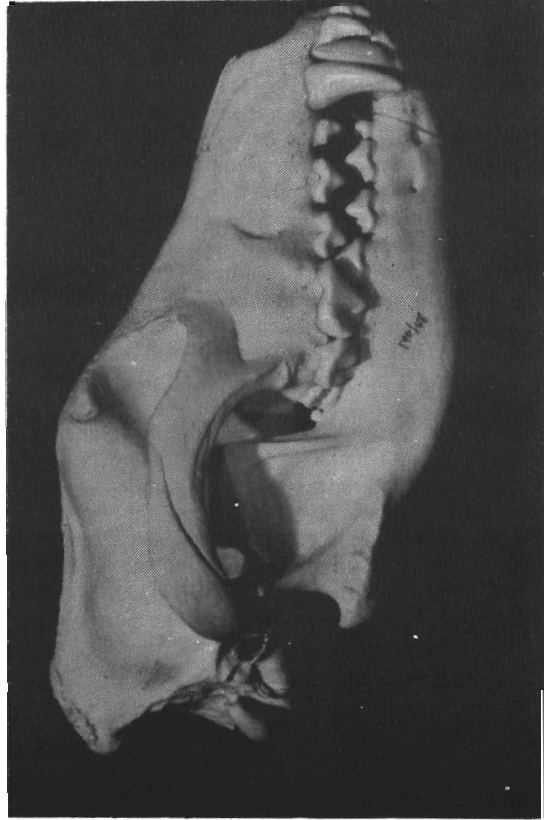
Following Professor Studer's death in 1922, the collection was doomed to be forgotten, were it not for a couple of idealistic men from the Swiss Cynological Society who were determined to create a foundation with the purpose not only of caring for, but also of carrying on with the



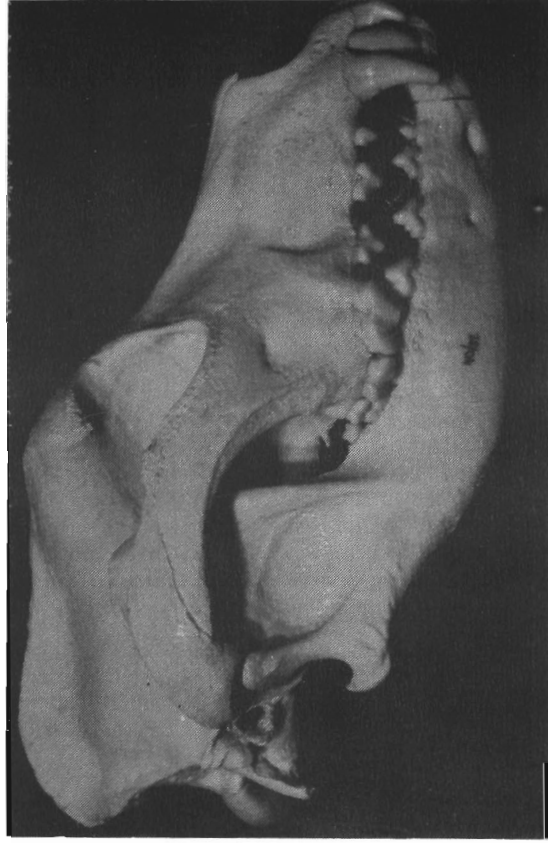
Irish Wolfhound, length 234mm; width 129mm.



Deerhound, length 207mm; width 114mm.



Wolf, length; 225mm, width; 145mm



Great Dane, length; 240mm, width; 142mm.

collection. Finally, in 1930 all was set, and the eightieth birthday of Professor A. Heim, a distinguished scientist and expert on dogs, was an appropriate occasion to name the new foundation after him.

In the very first years of its existence the board of trustees concentrated its activities mainly in enlarging the collection and in collecting enough means to enable the support of scientific research on dogs. This venture was quite a heavy task in the thirties but in the meantime thanks to several generous legacies the foundation is well off and capable of achieving its aims.

THE PRESENT

Today the foundation supports research work mainly in the domains of veterinary medicine and in anatomy/morphology. This financing of research work is but one of the aspects of the foundations undertakings. A second major object still consists in enlarging the collections of the Natural History Museum. They consist in the large skull collection with nearly 2000 skulls, the skeleton and fur collection. These are completed by a library, a collection of pedigrees and other important documents and by photographic archives.

Let us focus our attention on the collection of skulls, whose sense might need some explanations on our behalf. As it is, the dog is an ideal object for the scientist interested in the effects that absolute size and constitution have on the skull because of the immense variability among the existing 400 different breeds. As all dogs belong to one species quite a lot of genetic peculiarities can be perceived or ruled out more easily as it would be when comparing individuals of different species.

As an example for these zoological-morphological studies on dog skulls let us choose a well known fact: Small dogs have a relative larger brain than large dogs. Furthermore large dogs always have a sagittal crest and extensive frontal sinuses; toy dogs never have either. The connection between those two facts is that the size of the sagittal crest is not fixed genetically but is induced by the growth of the masticating muscles. As the large surface of the skull of small dogs does not call for an enlargement of the surface for the attachment of the masticating muscles, no crest is formed. The situation with the sinuses is similar insofar as the large brain of small dogs is in need of so much space that the sinuses are displaced completely.

Up to now we have been talking of small and large skulls as if the definition of size would cause no problem. But what about all the breeds which seem large but have a short muzzle . . . and the breeds whose skulls seem long and narrow? How is the extent of a shortening of the muzzle to be measured? The solution to this problem was to be found in a rather stable measurement in the region of the braincase which can be used as a reference for the size of a skull. The proof for the validity of this measurement was only made possible by the large number of skulls of all sizes that are in possession of the foundation.

These examples are but a small selection of the numerous problems that have arisen from morphological studies of dog skulls.

There is one more interesting character in dog skulls that is worth pointing out, not only because we have been working on this particular subject lately, but also because it will enable us to show that out of pure basic research practical use can be made: It is the upwards and downwards bending of the muzzle that is typical for many breeds. The breeds that show upwards bending (airorhynch) are found mostly among the short-headed (brachcephalic) breeds such as the Pekingese, the Bulldogs and the Mastiffs. A downwards bending of the muzzle common with some hounds and terriers such as the Whippet, the Bull terrier and the Borzoi, is known as klinorhynch. A strong causal correlation exists between these elevations and declinations of the muzzle and the extent of the stop. Now, dog standards mostly give great attention to the description of the stop but do not specify the angle between skull and muzzle. Breeders hence are more apt to pay attention to the appearance of the stop than to an increase or decrease of a hard-to-see angulation of the dog skull.

As every breeder knows, breeds can change their appearance rather quickly over a few generations and with the large collection of skulls we have at the museum we were able to show that in many breeds where a distinct stop is required by the standard a distinct trend towards airorhynch can be seen in the past generations. With breeds where a scarcely perceptible, or even no stop, is required, the skulls of some show a tendency towards downwards bending of the muzzle.

Facts such as these are not so easily perceived by everybody but nevertheless they must be pointed out to dog breeders. This is another important aspect of the aims of the Albert-Heim-Foundations: We try to propagate the results of our research work not only to the interested scientists but also to the dog breeders and all other persons seriously interested in dogs. We try to achieve this goal by lectures, articles in dog magazines, conducted tours of the collections and practical demonstrations.

In the above mentioned example of the angulation in skulls, mainly caused by the breeders who wish for a marked stop or for a missing stop, it is very important to know that along with these changes of the muzzle several more severe effects can take place: The angulation of the skull in either way, up or down, reduces its total length. As the length of the lower jaw is genetically separated from the length of the upper jaw a protruding of the lower jaw can be the result. With very strong angulations of the muzzle the space for the teeth in the upper jaw gets more and more narrow so that they can no longer be placed in one straight line. This is one more effect of the angulation between muzzle and skull.

The scientist who examines these phenomena and their effects does not judge whether they are good or bad but it is important that the persons interested in breeding get to know what problems they might have to face when they change the breed to this or that new ideal. Breeding towards particular, isolated attributes is always dangerous; some very negative, unwanted characteristics might come along. The problem is that at first one might not even notice that it is happening and then when they do appear it is already too

late and a lot of work has to be undertaken to eliminate these factors again.

At the museum we try to keep an eye on such developments that might be taking place. To fulfill our task a steady input of skulls is always necessary and that is why we do not stop collecting dogs. As has been showed, the collections do not only serve for pure scientific purposes but also for practical use in dog breeding. The foundation is therefore happy to be granted hospitality in the Natural History Museum.

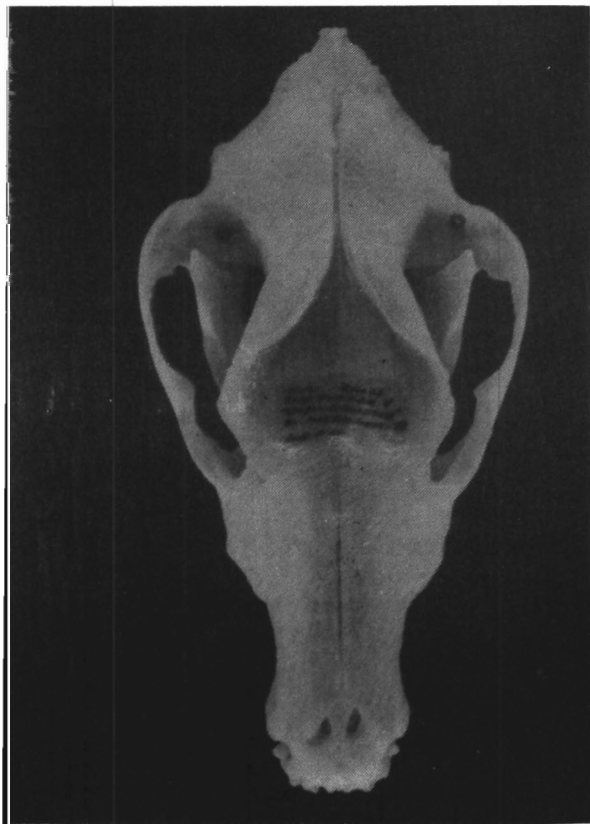
You might ask yourself how we come to all our skulls and bones. Well, the foundation is by now rather well known in Switzerland and a lot of dog owners give us the body of their dog at the time of its death. The skeleton and the skull are then prepared, measured and integrated in the collections. All data that has been given with the dogs such as pedigrees, lists of success at shows, photographs, medical case history, etc., are well kept in our archives as they are very valuable for the scientific documentation.

It is a sad fact that the collections are not (yet) open to the public, a notification of the scientific staff in charge is therefore inevitable in order to visit them.

If ever you come to Bern and if some of the above comments on the Albert-Heim-Foundation have found your interest and you would like to pay us a visit, do not hesitate to contact us. We will be glad to show you around.



Deerhound



Irish Wolfhound



Wolf

Sheepdogs in Wolfhounds' Clothing



The round-up.

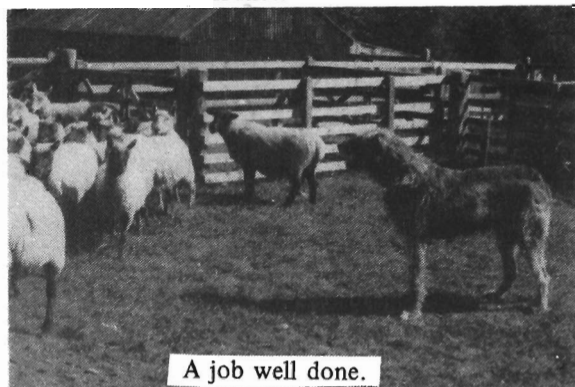
Almost three years ago we were delighted to send a three month old puppy, 'Orla' (Gulliagh Glenorla, litter sister to our Ch Gulliagh Galleon) to Varlerie and Derek Laidlaw, and their son Grant, who live near Selkirk in the border counties of Scotland. She was to be shown and to be companion to 'Finn', their four year old male Irish Wolfhound. The Laidlaws had recently acquired a sheep farm, and we had been glad to hear that both Irish Wolfhounds had got used to mixing with the sheep. A sheepdog was also kept for practical purposes.

Last summer, however, we visited the Laidlaws and we were amazed to find that the collie had been dispensed with and that the Wolfhounds had completely taken over its work. Apparently, Orla and Finn had been introduced to sheep through sharing the kitchen with a pet lamb which they had looked after and had vied with each other to wash after each bottle feed — the only time there had been any disagreement between them. So, they had learned from the start that sheep were family, not quarry. Then, they had gradually started to participate in the herding until eventually, by training and instinct, they were able to round, fetch, drive and pen. They take their duties very seriously, including the tending of new born lambs. As for the sheep, a flock of about fifty pedigree Cluns and some crossbreds, they are quite used to their big bosses and show little fear of them.

Not only are they shepherds, but they also go for long walks with Grant into the surrounding hill country where there is a lot of hare and the occasional deer from the neighbouring estates — luckily, they have no interest in strange sheep. So, they are both super fit. Gates and fences are cleared effortlessly with hardly a break in stride, a magnificent spectacle. When we saw them, Finn was six, a substantial 35 inch dog, and showing no signs at all of slowing up.

As the two are also very effective guard dogs, I can imagine the idea of multi-purpose Irish Wolfhounds catching on — among farmers, at least. Now, Orla is in pup to Finn so the

Laidlaws are looking forward to another generation of their most versatile hounds.



A job well done.

Donations Needed for Irish Wolfhound Rescue

Unhappily, we had five hounds for replacement through Rescue this year. Some of the hounds were found wandering the streets! A few were displaced through unforeseen circumstances.

May I remind breeders of Irish Wolfhounds that we are responsible for each puppy we breed and if it comes up for replacement we should be involved in its welfare. Club members are expected to look after their own breeding but this has not always been the case. I feel that a breeder who does not take an active part in what happens to their dogs when they come up for rescue should not be breeding. They should not have Wolfhounds; they are not interested in Wolfhounds; and they certainly do not love Wolfhounds. I sometimes wonder why they are "breeders".

As you will see from the report of our A.G.M. on our Rescue Fund, donations will be gratefully received by:

- Mr. Jim Behan 145 Glassmore Park,
Swords,
Co. Dublin.
- Mr. Tim Finney Gulliagh Farm,
Lecklinstown,
Naul,
Co. Dublin.
- Mrs. Hilda Hughes Spring-Farm,
Tramore,
Co. Waterford.
- Mr. Tony Redmond Whitecross,
Duleek,
Co. Meath.

Please make your donations payable to the Irish Wolfhound Club of Ireland Rescue Fund.

Also, members were asked to collect used stamps for our Rescue Fund and to send them to:

- Mr. W. Irving 12 Orkney Street,
Spring Farm,
Antrim,
Northern Ireland.

Jim Behan.

New Revised Edition

Raising, Showing and Breeding

THE IRISH WOLFHOUND **with** **extended section on** **the Standard**

CENTENARY ISSUE — NUMBERED COPIES
(Irish Wolfhound Club 1885 — 1985)

Due out May/June 1985

This new edition will be available from the author
Elizabeth C. Murphy, Ballyhagan House, Carbury, Co. Kildare.

Price £15.00 sterling plus £1.25 P. & P. Airmail £4.00 extra.

U.S. \$/23.00 including surface post. Airmail U.S. \$/ 5.50 extra

ORDER FORM

(Remittance must accompany order)

Name:
(Block capitals please)

Address:

.....

.....

Bearna Buí Irish Wolfhounds



CH. BRIGID OF BEARNA BUI

(Gwernyfed Lleigus of Carrokeel x Ch. Mary of Nutstown)

Having gained her title two years ago Brigid (Biddy) is now only shown on very special occasions in Ireland. Shown twice in 1984, at the Irish Wolfhound Club of Ireland Championship Show and Irish Breeds Society Championship Show, she took Best of Breed on both occasions.



CH. MARY OF NUTSTOWN (at 8½ years old)

(Ch. Boroughbury Justice x Maeve of Balgee)

Mary 'Beauty' came out of retirement for a few special occasions in 1984. As a veteran 8½ years 'Beauty' took C.C. Bitch at the Irish Wolfhound Club of Northern Ireland Ch. Show and again at Belfast Ch. Show.

Two challenge Certificates at 8½ years of age.

JIM BEHAN

145 GLASSMORE PARK, SWORDS, CO. DUBLIN. PHONE (01) 402305

Nutstown Irish Wolfhounds

In the Irish Republic, where Irish Native Breeds are well represented both in quality and quantity, this has been a marvellous year for the Nutstown Kennels of Irish Wolfhounds, owned by John and Kathleen Kelly. Their puppy Chieftain of Nutstown, line breed in Ireland for five generations, made history by going Best in Show at a general show in Kilkenny in June, at the age of 6½ months! He has now qualified for the British Dog World/Spillers Pup of the Year competition by winning the Puppy Stakes at Belfast in September.

The Kellys have been breeding Irish Wolfhounds for some 22 years with considerable distinction. In 1980 their great International Champion, Nutstown King became the Top Winning Dog in his breed in both Ireland and Britain, and repeated his Irish supremacy at home the following year. This was followed in 1982 by International Champion Carrokeel Sir Connel of Nutstown, and in the same period produced the two Irish Champions, Ch. Sara of Nutstown and Ch. Kracken Kaiser, the top winning hound for 1983, another son of King. The last named are the parents of Chieftain, and anyone desiring an opinion on the quality of Irish Dogs would do well to watch this youngster at this year's Pup of the Year final.

Mr. E. Steele



CHIEFTAIN OF NUTSTOWN

Born 26-11-83

10 Months

Sire: Ch. Kracken Kaiser

Dam: Ch. Sara of Nutstown

He also won 6 All Breed Puppy Stakes

Best Puppy of Irish Wolfhound Club of Northern Ireland, Ch. Show

Best Puppy of Irish Breeds Ch. Show

He gained all his major Ch. points under 1 year.

NUTSTOWN IRISH WOLFHOUNDS



26-11-82 **SORCHA OF NUTSTOWN (Millie)** 18 months

Sire: Int. Ch. Carrokeel Sir Connel of Nutstown

Dam: Ch. Sara of Nutstown

Millie started her show career when at her first show she took R.G.S. from Puppy class. She continued the season of 1984 with B.O.B. at Killarney All Breeds Ch. Show, B.O.B. at Limerick All Breeds Ch. Show, B.O.B. at Tralee All Breeds Ch. Show, B.O.B. and Group Winner at Bull Breeds Ch. Show. These two youngsters pay tribute to Sara who this year gained her Ch. title.



Not forgetting the old man of the Kennel Int. Ch. Nutstown King, Chieftain and Sorcha's grand sire, he went: Best Veteran at Irish Wolfhound Club Ch. Show 1984; Best Male Veteran at Northern Ireland Ch. Club Show 1984; Best Veteran and Res. in Group at Swords All Breeds Ch. Show 1984; Best Veteran at Killarney Ch. Show, All Breed Veteran Class 1984; Best Veteran at Tralee Ch. Show All Breeds Veteran Class; Best Veteran at Bull Breeds Ch. Show All Breeds Veteran Class, Best Veteran at Irish Breeds Ch. Show, All Breeds Veteran Class and Best Veteran at Border Counties Ch. Hound Show at 8½ yrs.

Breeders: JOHN AND KATHLEEN KELLY,
"Nutstown Irish Wolfhounds"
Telephone: 433113 or 437826

Hollywood
Ballyboughal
Co. Dublin

The Future ~ In Their Hands !!!





Athcarne Nora of Knocknarea

Lady of Nutstown

Lady & her daughter Knocknarea Teena



Ika & Ulli Peiler

The Burrow

Clooneen, Ballymote

Co. Sligo

Puppies expected in April

Enquiries welcome

Lady of Nutstown



TOLKA VALLEY KENNELS

IRISH WOLFHOUNDS AND KERRY BLUE TERRIERS



Tolkavalley Aoibheann at 5 months



Tolkavalley Iona at 1 year old

MISS I. WALTON,
Phone: (01) 401797

"Hazel Bridge"
Knocksedan
Swords
Co. Dublin

TOLKA VALLEY KENNELS

IRISH WOLFHOUNDS AND KERRY BLUE TERRIERS

MISS I. WALTON,

have moved again

Phone: (01) 401797



Tolkavalley Tory

Tolka Valley Tory, 1 B.O.B., 2 G.S.B., 2 Res. G.S.B.

Her daughter Tolka Valley Aoibhinn is a multi 1st Prize Ch. Show winner.

Tolka Valley Iona is also a 1st Prize Ch. Show winner.



Tolka Valley Tory's grand daughters "Tolka Valley Ardmore" "Hazel Bridge"
and "Tolka Valley Ardkeen" (Tolka Valley Aran c Tolka Valley
Lady Jane), at 5 months old.

Knocksedan

Swords

Co. Dublin

NEWTOWN HILL

IRISH WOLFHOUNDS

Perpetuating the rare old Irish blood lines

**Send greetings to all
Irish Wolfhound Club members
for a successful
club year**

★ VISITORS WELCOME BY APPOINTMENT ★

**Newtown Hill, Leixlip, County Kildare, Ireland.
Tel. (01) 280-404.**

NEWTOWN HILL IRISH WOLFHOUNDS



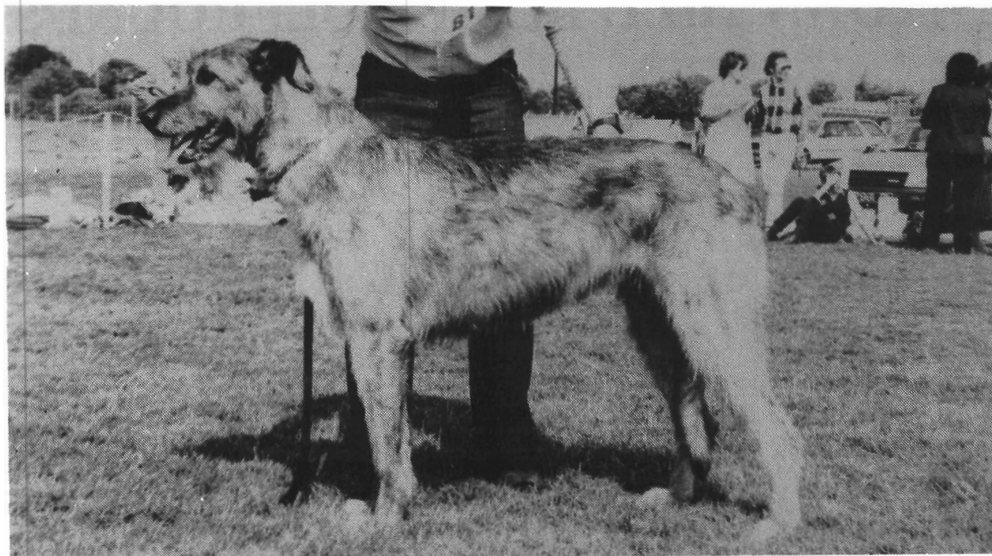
We wish our new 1984-85
NEWTOWN HILL
hound owners around the world
success and all
the joys of
owning an
Irish Wolfhound

Direct Enquiries to:-

MRS. J. R. BREMNER, Newtown Hill, Leixlip,
County Kildare, Ireland.
Tel. (01) 280-404.

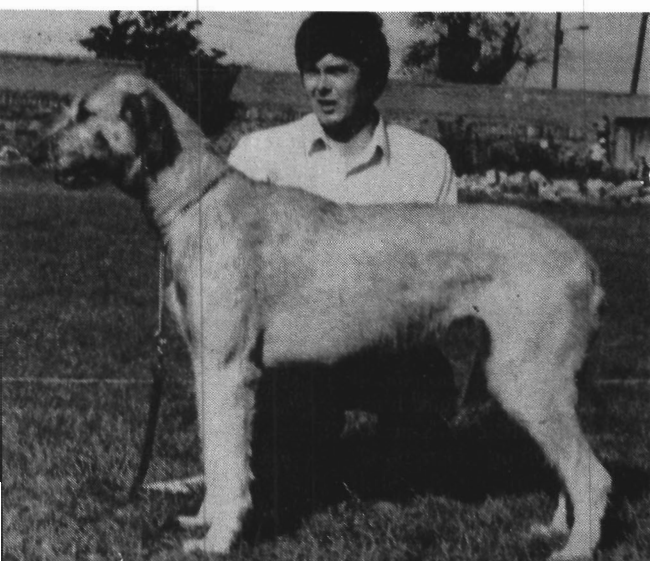
KEEREN

IRISH WOLFHOUNDS



Galtymore Pride

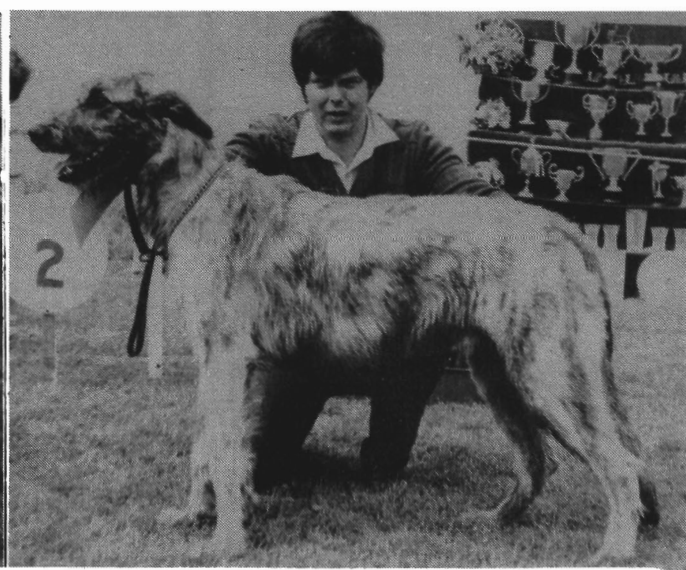
Sire: G.B. Ch. Royden Finnigan. Dam: Aus. Ch. Grainne An Ban Ri



Keeren Lady

Sire: Int.Ch. Carrokeel Sir Connel of Nutstown

Dam: Galtymore Pride



Keereen Culaith

Sire: Ch. Kracken Kaiser

Dam: Henrietta of Termon

In March we expect a quality litter out of our "Galtymore Pride:: by G.B. Ch. Kellybourn Pilot at Ballalyn. Enquiries to:

Mike and Cath Thorpe

Glendalligan

Lemybrien

**Co. Waterford
Ireland**

Tei: 051-91255

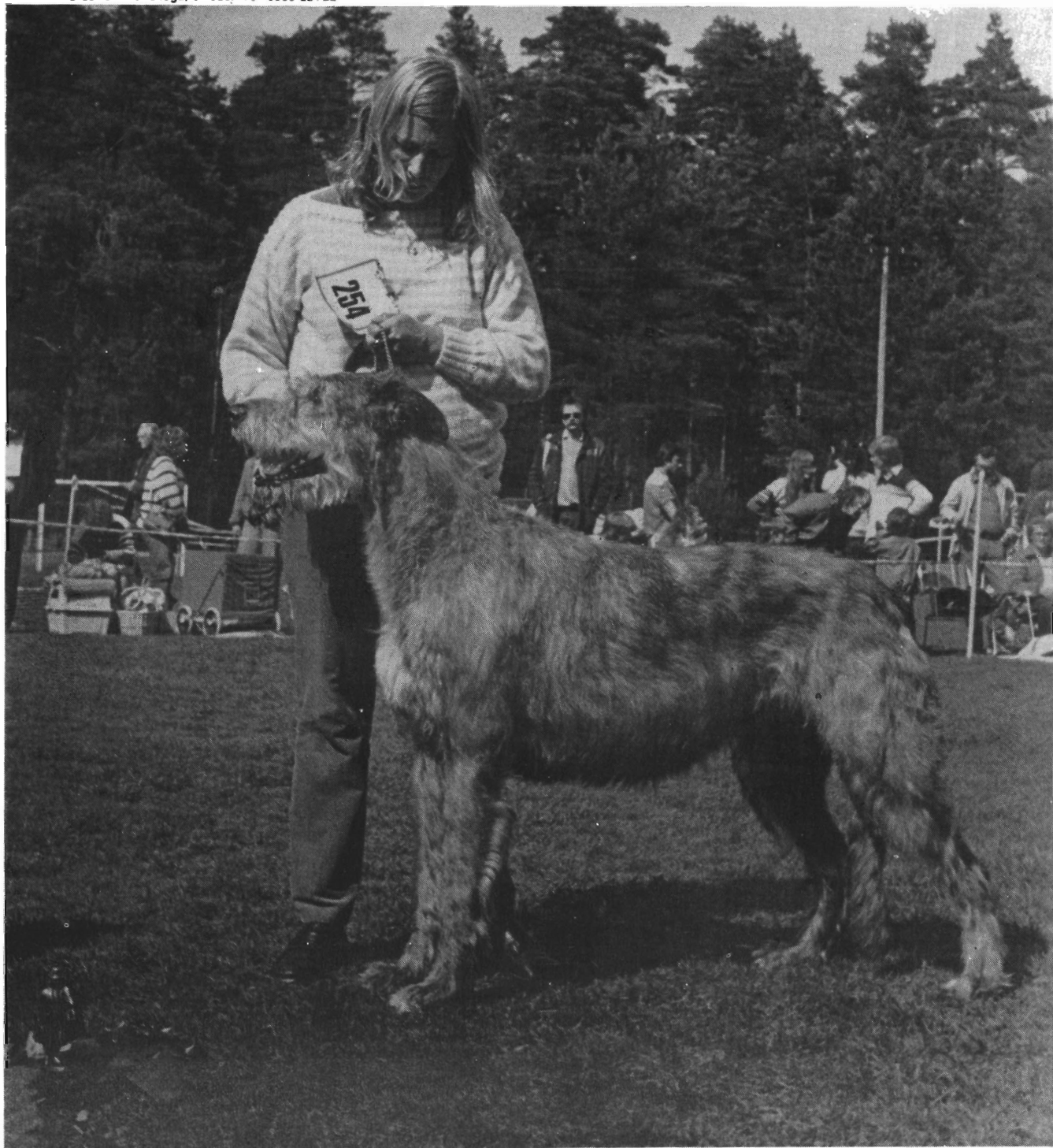


EVA & JAN SÖDERQVIST

Charlottenlund 9888
S-69194 Karlskoga, Sweden Tel 0586-28122

3rd Top Breeder All Breeds 1984 in Sweden
INT. CH. WESTMOUNT DIXIE D'OR (below)
winning the Hound Group at Satila Nat.

INT. CH. WESTMOUNT KIM BIBA—group win Sthlm Int.



Gulliagh Irish Wolfhounds



HYDEBECK NESSA OF GULLIAGH (5.3.'85) at 11 months

(Ir. Ch. Gulliagh Galleon x Hydebeck Ballycarrie)

Nessa is our latest addition, and represents the fourth generation living at Gulliagh. Int. Ch. Carrokeel Coillte Merlin, her grandfather and great-grandfather, is now 9 years old and is in great shape.

Her sire, Ch. Gulliagh Galleon, has had another excellent year, gaining his Irish Championship at just two years. He won his first CC plus BIS, at the I.W. Club of Northern Ireland Speciality Ch. Show, two Res. CCs and was the top winning Irish Wolfhound in Ireland in 1984.

TIMOTHY & MARION FINNEY

Gulliagh Farm, Lecklinstown

Naul, Co. Dublin

Tel: Dublin 411988

CHAPELLEIGH

IRISH WOLFHOUNDS



Nuala of Chapelleigh (14-2-80)
(Int. Ch. Nutstown King—Sheba of Garrow)



Chapelleigh Ailinn (11-12-82)
(Ch. Kracken Kaiser—Coledally Nike of Chapelleigh)



Chapelleigh Iosac of Nutstown at 7 mths
(Int. Ch. Nutstown King—Nutstown Grainne)



Chapelleigh Barak at 6½ mths.
(Eng. Ch. Marumac Charlock—Nuala of Chapelleigh)

Since 1982 B.I.S. win at I.W.C.I. Ch. Show Nuala has been out of the ring due to a coursing injury and a litter. She is now being campaigned again in England. Ailinn and "the boys" will be lightly shown this year and we hope to bring them across the water in the future.

We are grateful to John and Kathleen Kelly for their help and advice, and a special thank you to King.

Dave and Denise Bushby

**Chapelleigh
Lydeard St. Lawrence
Taunton
Somerset, England
Tel: 098 47 343**



THE IRISH WOLFHOUND GUIDE (2nd Ed.—1977)

By Alfred de Quoy

Author: *The Irish Wolfhound in Competition* (1980)

This book was, in 1978, adjudged by the Dog Writer's Association of America, Inc. to be the Best Book on a Single Breed.

"A monumental work"

Mrs. Florence Nagle (England)
25 April 1974

"What is there to say about this book that I haven't already said about the first edition? And I ran out of superlatives then! . . . A must."

Hilary Jupp, Reviewer
The Irish Wolfhound (Britain)
July/September, 1978

"The wolfhound experts on both sides of the Atlantic Ocean agree on the fact that de Quoy has presented the most comprehensive and best book on the breed."

Dr. Helmut Quaritsch, Reviewer
Unser Rassehund (German Kennel Club Gazette - translation).
No. 4, 1977

"A great breed deserves a great textbook and this is exactly the right word for 'The Irish Wolfhound Guide' — great! . . . A text all IW fanciers should own."

Joan Morden, Judge and Reviewer
Dogs in Canada, November 1977

"As close to being a complete Irish Wolfhound library within one cover as it is possible to imagine."

Pat Huntley, Reviewer
The Gazehound, May/June 1974

"Monumental and compendious treatise. . . a tribute to the scholarship and knowledge of its author."

Ireland of the Welcomes, March/April 1975

"Invaluable to breeders, owners and judges of the Irish Wolfhound."

The Kennel Gazette (Britain), August 1974

"A beautifully bound and presented volume."

"International and foremost authority on the breed."

James W. Hueston, General Manager
The Canadian Kennel Club, 11 April 1974, 1 February 1978.

"Comprehensive, lucid, balanced, well-illustrated and intelligent. . . This is a book to be usefully read by any serious dog person."

Dr. Nancy Leuba, Reviewer
Dog Tracks, Reprinted in the Irish Wolfhound Club of America's
Harp and Hound, Vol. XXV, No. 2, 1974

"Remarkable."

Alain Thomas, Judge and Reviewer
R.A.L.I.E. (Official publication of the Irish Wolfhound Club of France).
No. 1, 1974

"A MUST for serious Irish Wolfhound fanciers."

Maureen Madden, Reviewer
Royal Australian Society Kennel Control Journal, May 1980

"One of the best cynological books ever published."

Ingeborg Kincaid, Vice-President/Secretary General
Club Canino de Panama, 10 May 1980



THE IRISH WOLFHOUND IN COMPETITION (1980)

By Alfred de Quoy

Author: *The Irish Wolfhound Guide (2nd Ed.—1977)*

"Wonderful."

Mrs. S. Groverman Ellis
Breeder of Irish Wolfhound Champions
(Killybracken) since 1937 (USA)

"A most magnificent book with all the data on the Irish Wolfhound possible to obtain. I congratulate you on a wonderful achievement."

Mrs. Florence Nagle
Breeder of Irish Wolfhound Champions
(Sulhamstead) since 1927 (England)

"This well-known judge of dogs has written another book which is a tribute to his scholarship and invaluable to owners and breeders of The Irish Wolfhound in particular."

Mary O'Sullivan, Reviewer,
Ireland of the Welcomes

"A comprehensive fund of knowledge. . .
Research unparalleled in the breed. . .
Irish Wolfhound owners the world over owe you a deep debt of gratitude."

Denis J. Smyth
Former Director/Secretary,
The Irish Kennel Club

"In a hundred years, this book will still be authoritative. It will serve as a model for writers on other breeds. All in all, an original and unparalleled work, the result of unbelievable effort, patience and accuracy which assures the author of a place among the foremost cynological writers."

Professor Dr. Helmut Quaritsch
President of Sighthound Club in
German Kennel Club Gazette - (translation)

ORDER FORM

Send me _____ copies of *The Irish Wolfhound in Competition (1980)* @ \$30.00 (U.S.) each.

Send me _____ copies of *The Irish Wolfhound Guide (2nd Ed.—1977)* @ \$30.00 (U.S.) each.

Enclosed is my check for _____.

Name _____

Address _____

City _____ State _____ Zip _____ Country _____

Make check payable to: Mrs. Alfred de Quoy
6800 Broyhill Street
McLean, Virginia 22101 U.S.A.

in one of these ways:

1. Check on U.S. bank payable in U.S. dollars, or
2. International money order, or
3. Check on British, Canadian, French or West German bank payable in that country's currency, allowing for difference in rate of exchange, or
4. Check on bank of any other country payable in currency of that country, allowing for difference in rate of exchange and adding \$2.00 for bank and collection costs.

ATHCARNE IRISH WOLFHOUNDS



ATHCARNE NEESHA

(Eng. Ch. Outhwaite Am Cu x Ch Athcarne Shiofra)

Photo by: E.C.Murphy

Sends greetings to all
Athcarne Irish Wolfhound owners
around the world
and wishes them continued success

Breeders: Tony and Ger Redmond
Whitecross, Duleek, Co. Meath
Phone: 041-25313

TULLYGIRVAN

IRISH WOLFHOUNDS

No wonder we're smiling!



Int. Ch. Tullygirvan Liadain

Liadain has joined the select band of I.W. to have made up their Irish/Eng. titles from dual titled parents.

MILES & SUE RATHBONE-SCOTT

Tullygirvan
Upr. Gransha Road
Six-Road-Ends
Bangor

Co. Down, N. Ireland
Phone: (0247) 460005

The Irish Wolfhound Club of Ireland
are extremely grateful to Waterford Crystal for their most
generous donation of fourteen Waterford Crystal Vases,
presented to the winners of our Golden Jubilee Ch. Show

The winner of each class received a 6" high Waterford
Crystal Vase and Best of Breed winner received a
10" Waterford Crystal Vase.

The Irish Wolfhound Club of Ireland are
extremely grateful to

Windsor Foods Limited

Armagh

30 Loughgall Road, Armagh BT61 7NN. Telephone: (0861) 523158. Telex: 747612

Belfast

12 Lower Crescent, Belfast BT7 1NR. Telephone: 242635

London

Townsend House, 160/174 Northolt Road, Middx. HA2 OHG.

Telephone: 01-423 0700. Telex: 8813872.

Manufacturers of the Finest Dog Foods

Including: **MASTER McGRATH**

JESSIE

HUSKY, etc.

for so generously sponsoring our
Golden Jubilee Championship Show
1934 — — 1984

