

# THE IRISH HOUND



*Prin*

## **The Irish Wolfhound Club of Ireland**

Established 1925

ISSUE  
1985



# The Irish Wolfhound

## The standard of excellence and list of points in order of merit.

1. *General appearance:* The Irish Wolfhound should not be quite so heavy or massive as the Great Dane, but more so than the Deerhound, which in general type he should otherwise resemble. Of great size and commanding appearance, very muscular, strongly though gracefully built, movements easy and active; head and neck carried high; the tail carried with an upward sweep with a slight curve towards the extremity.  
The minimum height and weight of dogs should be 31 inches and 120 pounds; of bitches, 28 inches and 90 pounds. Anything below this should be debarred from competition. Great size, including height at shoulder and proportionate length of body, is the desideratum to be aimed at, and it is desired to firmly establish a race that shall average from 32 inches to 34 inches in dogs, showing the requisite power, activity, courage and symmetry.
2. *Head:* Long, the frontal bones of the forehead very slightly raised and very little indentation between the eyes. Skull, not too broad. Muzzle, long and moderately pointed. Ears small and Greyhound-like in carriage. Bite, scissors ideal, level acceptable.
3. *Neck:* Rather long, very strong and muscular, well arched, without dewlap or loose skin about the throat.
4. *Chest:* Very deep. Breast wide.
5. *Back:* Rather long than short. Loins arched.
6. *Tail:* Long and slightly curved, of moderate thickness, and well covered with hair.
7. *Belly:* Well drawn up.
8. *Forequarters:* Shoulders muscular, giving breadth of chest, set sloping. Elbows well under, neither turned inwards nor outwards. *Leg:* Forearm muscular, and the whole leg strong and quite straight.
9. *Hindquarters:* Muscular thighs and second thigh long and strong as in the Greyhound, and hocks well let down and turning neither in nor out.
10. *Feet:* Moderately large and round, neither turned inwards nor outwards. Toes, well arched and closed. Nails, very strong and curved.
11. *Hair:* Rough and hard on body, legs and head; especially wiry and long over eyes and under jaw.
12. *Colour and markings:* The recognized colours are grey, brindle, red, black, pure white, fawn, or any colour that appears in the Deerhound.
13. *Faults:* Too light or too heavy a head, too highly arched frontal bone; large ears and hanging flat to the face; short neck; full dewlap; too narrow or too broad chest; sunken or hollow or quite straight back; bent forelegs; overbent fetlocks; twisted feet; spreading toes; too curly a tail; weak hindquarters and a general want of muscle; too short in body; pink or liver-coloured eyelids; lips and nose any colour rather than black; very light eyes.

## List of Points in order of Merit

1. *Typical:* The Irish Wolfhound should not be quite so heavy or massive as the Great Dane, but more so than the Deerhound, which in general type he should otherwise resemble.
2. *Great size and commanding appearance.*
3. *Movements easy and active.*
4. *Head, long and level, carried high.*
5. *Forelegs, heavily boned, quite straight; elbows well-set under.*
6. *Thighs long and muscular; second thighs, well muscled, stifles nicely bent.*
7. *Coat, rough and hard, especially wiry and long over the eyes and under jaw.*
8. *Body, long, well ribbed up, with ribs well sprung, and great breadth across thighs.*
9. *Loins arched, belly well drawn up.*
10. *Ears, small, with greyhound-like carriage.*
11. *Feet, moderately large and round; toes close, well arched.*
12. *Neck, long, well arched and very strong.*
13. *Chest, very deep, moderately broad.*
14. *Shoulders, muscular, set sloping.*
15. *Tail, long and slightly curved.*
16. *Eyes, dark.*

*Note:* The above in no way alters the 'Standard of Excellence' which must in all cases be rigidly adhered to; they simply give the various points in order of merit. If in any case they appear at variance with Standard of Excellence it is the latter which is correct.

# CONTENTS

- 02. The President's Page
- 03. Profile
- 05. Annual General Meeting
- 07. 1985 Championship Show
- 10. Waterford Open Show
- 11. Belfast Championship Show
- 11. Monkstown Show
- 12. Carlow Show
- 12. Irish-made Furniture
- 13. Longevity
- 16. Flashback
- 17. Green Star Winners
- 18. New Champion
- 19. New Champion
- 21. Shows Ireland 1986
- 22. Fading Puppies
- 24-36 Adverts

## 1985/86 Officers & Committee

*President:* Miss E. C. Murphy  
*Vice-Presidents:* Mrs. S. Rathbone-Scott and Miss I. Walton  
*Chairman:* Mr. J. Behan  
*Hon. Treasurer:* Mr. T. Finney  
*Hon. Secretary:* Mrs. H. Hughes  
*Committee:* Mrs. K. Kelly, Mrs. K. Mernagh, Mr. W. Clarke, Mr. T. Redmond, Mr. Killykeen-Doyle, Mr. G. Pritchard.

## Magazine Committee

*Editor:* J. Behan  
*Proof Readers:* E. C. Murphy, T. N. Finney  
*Layout & Design:* G. Pritchard  
*Correspondence to:*  
 The Editor  
 145 Glassmore Park,  
 Swords,  
 Co. Dublin,  
 Ireland.

## EDITORIAL

Each year we try to improve the quality of the "Irish Hound" and hopefully we succeed. This year I feel we have, due largely to the expertise of George Pritchard who has designed the layout for this year's issue. I wish to thank those who submitted the material, it would appear that this is being left to the same few people every year. We need interesting articles all the time so don't leave it to the few.

Also this year we hoped to include a very important and valuable addition to the "Irish Hound" Irish Kennel Club registrations for our breed. We applied for this information to the I.K.C. and from correspondence we believed it was forthcoming, but unfortunately a problem has arisen in the negotiations which we hope to overcome in the near future. In the meantime we hope to compile a list of dogs from breeders directly. Unfortunately this will be incomplete as we will only reach Club Members. Breeders outside our club whom we do not know will be missed.

*Jim Behan*

## THE IRISH HOUND

We regret that the first (1972), second (1973) and fourth (1975/76) issues of the magazine are completely sold out.

The following issues are still available:

1974/75	1977/78	1978/79	1979/80
1980/81	1981/82	1982/83	1984
1985 — the present issue			

Price £2.50 per issue

Postage, Europe 50p per issue. U.S.A. 76p per issue



## THE PRESIDENT'S PAGE

### Meet the (1985) Exhibiting Members

It is a pleasure to see new faces and new hounds coming into the show ring. We extend a warm and special welcome to each of the following:

Tony Bergin from Dublin with his young dog, "Glen na Smol of Nutstown".

Mr. & Mrs. Carlisle from Co. Down with their English bred hound "Chapelleigh Barum" — nice to see new lines coming in.

Barry Foley from Wicklow with his "Newtownhill Be-Just" and Gerry Kelly from Waterford with "Nora of Knockbrack".

Tom McSkane from Castleblaney with his puppy "Kilcullen Ray".

Brian Rickaby with his "Marshgrove Trixies Queen" and Maureen Redmond with "Guillemot of Callaighstown" — both junior bitches, and June Watson with her puppy "Connel".

At Belfast, Mrs. Clyde made her debut with her English bred bitch "Whysper of Lainston" and at Waterford Open show Mrs. Commins with "Teige of Tiobrad".

On St. Stephen's Day, Ger and Miranda McKenna brought out their new puppy "Biddy of Nutstown" and Mrs. Ann Butler brought out the first puppy of her own breeding "Lady Maeve of Lisbrook". Anne Butler's daughter, Liesel, is very keen on junior handling competition and worked very hard last year training with Chieftain of Nutstown. Unfortunately, for Liesel, Chieftain's main interest was getting back to his owner, John Kelly. Now that she has a puppy of her own, Liesel will be able to hold her own in the all-breed junior handling competition.

This brings us to names already well known at the ringside at home but who may not yet be familiar to our friends abroad: Mrs. McSweeney from Co. Meath with "Ballyvalla Aine", Kim and Cora Ryder from Co. Dublin with "Carrokeel Argus Ryder" and Martin Timlin with his home bred "Aine of Knockbrack".

1985 was a year to remember for Seamus Buggle, whose "Carrokeel Clasby" took her first step towards championship and bred her first litter — one puppy! Another proud breeder of one pup is Jim Lowth from Rush, Co. Dublin. Jim's bitch is "Keereen Queen of Russinfinlow", Russinfinlow is his own prefix. Keereen is the prefix of Mike and Cath Thorpe, Co.

Waterford, who have had an exciting year with their "Galtymore Pride of Keereen" who is now well on her way to her Irish championship and has taken her first step to her English title.

We were all very pleased to see Mrs. Jim Bremner at the Club show with her Ch. Beau Flynn of Newtown Hill. Flynn, now a veteran, was in grand form and the following week, at Swords, his daughter Killykeen Banshee of Newtownhill won her first points towards championship.

Henry Irving from Co. Antrim was at the Club show with a young male of his own breeding "Finbar Eireanhon" and Mr. Garrett from Co. Down was there with his home bred "Sheila of Clint". Ulli and Ika Peller (Knocknarea I.W.) came all the way over from Ballymote in Co. Sligo. This year they had "Knocknarea Deirdre", a junior bitch from their first litter. Mel and Anita Wilcox, who have chosen Chulchoill as their prefix, have come to live in Co. Laois with their three hounds. They are fortunate in having a Wolfhound specialist as their local vet.

Remember Mr. and Mrs. James Tyrrell, breeders of Dunamais I.W. whose lines feature prominently behind many Irish bred lines. The Tyrrells are in great form but have not had any Wolfhounds for ten years or more.

Two of our I.W. families have returned to England, Toni and Alan England and Ian and Cathy Lyons. We hope that they will come back to see us from time to time. Mr. and Mrs. Parker (Kracken I.W.) who live in Co. Longford have just one hound now. Mrs. Sugars (Callaighstown I.W.) who has been breeding for approximately ten years, started showing her hounds last year and is now one of the most consistent exhibitors. Catherine and Ronnie Abbott from Armagh, although they sent their entries to support the Club show, were not able to make it. We hope to see them next year. Kitty Mernagh (Ballyvalla I.W.) from Co. Waterford and her daughter, Siobhan, have been to a few shows this year with their home bred young bitch "Ballyvalla Aoife of Moonvoy".

It is always good to see people back in the ring after a few years absence. Dick McCoy is back with his young bitch Oonagh McCoy of Cu-Uladh, nice to see the Cu-Uladh's active again. Another welcome pair back into the ring are Kathleen McCumisky and Maureen Millar with Donal of Bearnabui and Carrokeel Mulligan. Our own Hon. Sec. Hilda Hughes is back in the ring again with a young bitch whose lines go back to those of her first bitch. Hilda's prefix is Moonvoy. Great to see you back in the ring Hilda. Michael Daly from Co. Waterford is coming back into the show scene again too. He judged Club's first Open show this year which was held in conjunction with the Waterford Open Show. George Pritchard, who is owned by "Ballykelly Doolough" has to be congratulated on a great idea. He and his wife, Gabi, invited the Wolfhound contingent back to their home in Wicklow after the Carlow show. Hidden talents were revealed when George played the tin whistle and Tim Finney played the fiddle. The Pritchards have a boarding kennels so all visiting hounds were catered for while their owners had a most enjoyable evening. A great time was had by all. George and Gabi had Sheelagh Seale to join them for Christmas Day. Sheelagh finds the winters hard but George says that she is in reasonably good form. Hopefully we shall see her back at the shows again when the summer comes. John Hughes who temporarily co-owned the Ballykelly's has not been to many shows this year, but he did make the Club show with "Ballykelly Kelly". Mrs. Connie Taylor has been out with a new young dog of her own breeding "Kilcullen Remus". She finds it difficult to arrange to get away to the shows but she always manages to support Club events.

It was a bittersweet year for Jim Behan. He lost his lovely Ch. Brigid of Bearnabui early in the year. A few months later, Brigid's nine year old dam, Ch. Mary of Nutstown finished her English Championship with a B.I.S. win at the N. Ireland Breed show.

Billy Clarke's Ch. Coolbreagh Athcarne Clodagh recently had a litter of eleven puppies which is keeping him busy and out of harm's way just now.

Tim and Marion Finney's great event of the year was the arrival of their new baby son, Ian. There was general rejoicing at the news. Their Ch. Gullagh Galleon is now just a step from his English title.

John and Kathleen Kelly made up two champions this year, Chieftain and Sorcha of Nutstown. Is a brace of blacks, both champions, a first?

Tony Killykeen-Doyle has had a very bad year with his back. He has had surgery and, hopefully, things will improve from now on. All his hounds are doing well.

Sue and Miles Rathbone-Scott have not been down to many shows this year. They were of course at the Club show where their Int. Tullygirvan Liadain was awarded Best Bitch.

Tony and Ger Redmond and the Athcarnes are fully covered in the Profile. When going through the family albums to look for early photos of their first hound, Billy Clarke and I were amazed to see photos of Tony winning a European award for design in metal. He absolutely forbade Billy to use this in the profile, and of course Billy did not do so. Neither would he allow us mention anything about his success as a rugby player — but this is not the Profile?

Isobel Walton is very well and is busy settling into her new home at "Hazel Bridge", Knocksedan, near Swords, Co. Dublin. Belle has some lovely young stock coming along and will have an exciting time when she gets back to full-time showing.

Having been working through the list of exhibitors in the club show catalogue, I realise that I neglected to mention Des McKenna. Des is our show Director and never lets us down, not even when we have torrential rain like last year. In truth, I think that our judge, Ron Baird deserved a medal for staying out in the continuous rain. Naturally, nobody wanted the hounds judged inside. I kept the nicest bit of news till now. Anne O'Dwyer (Moll Machie) got a new young puppy last year so we are looking forward to seeing her at the shows again in 1986.

## News & Views

A special word of thanks to our English friends who bring their hounds over to compete at our shows. We like to go over to the U.K.'s Clubs special shows and we are pleased that you return the compliment. Our congratulations to Mac McMillan whose English Ch. Kellybourne Pilot had such a successful year in Ireland and became an Irish champion. Our hearts went out to them when we heard of Pilot's tragic death shortly afterwards.

Congratulations to four great champions who are ten years old this month: Behan's INT. CH. MARY OF NUTSTOWN; Bremners CH. BEAU FLYNN OF NEWTOWNHILL; Finney's INT. CH. CARROKEEL COILLTE MERLIN, and Kelly's INT. NUTSTOWN KING.

Sue and Miles' TULLYGIRVAN LIADAIN is an Irish and English Champion and both parents are also Irish and English champions. To my knowledge, this is a first for the record books.

Following much discussion it was decided to award the new Miss Twyman (Nendrum) memorial trophy for Best of Breed at our new Open show. This show was such a success at Waterford that it had already been decided to make it an annual event. Thank you Hilda for all the extra work involved.

We had twenty-two championship shows last year and as will be seen from the Green Star points values on Billy Clarke's page, entries are often disappointing. The maximum point value is ten. There must be eight Wolfhound dogs or nine bitches actually present to give a value of five points. Hounds must compete against any champions present to win the Green Star. The forty points required for championship must include four green stars with a value of five points or more. If a hound wins two Green Stars under the same judge, the second one will only have a value of one point towards championship. We have two C.C. shows in N. Ireland.

The Irish Kennel Club published an interesting book **THE NATIVE DOGS OF IRELAND** — their origin — development — standards. This is available from The Irish Kennel Club, 23 Earlsfort Terrace, Dublin 2. Price £5.00 + £1.00 soft-back edition and £15.00 + £1.50 P. & P. (Irish Punts).

Anna Redlich's **THE DOGS OF IRELAND** is available from Dundalgan Press, Francis Street, Dundalk, Co. Louth, Ireland. Price £6.00 sterling.

We regret that we had to increase our subscription rates this year. Publishing the magazine takes every penny of our annual resources but we think it is worth the investment. We hope you agree. The new rates, which are due on 30th June each year are IR£4.00 per annum (IR£5.00 Overseas Members) and IR£6.00 Joint Membership i.e. Husband and Wife (IR£8.00 Overseas Members).

We had an enjoyable get-together at Ballyhagan last June. The idea was to let novice exhibitors see their hounds handled by experienced handlers, as they, the owners, watched with the acting judge. It proved a useful experience. Thanks to Seamus Buggle we had a practice coursing session also. Short straight runs to teach Wolfhounds that they don't have to look for something to chase, if they just stand still an obliging human will run something by them. I feel sure they were highly amused at what humans will do. Three and four dogs could run at a time and great fun was had by all. Thankyou, Seamus.

E.C.M.

## Profile

### Tony & Ger Redmond (ATHCARNE IRISH WOLFHOUSES)

It was in January 1973 that Coill Tomair Maeve joined the Redmond household. This was to become the foundation bitch of the Athcarne Kennel but back in 1973 Tony & Ger had no thoughts of showing or breeding.

Maeve immediately instilled a love of the breed in the Redmonds; she was a tremendous character with a lovely friendly temperament. Besides having a great personality, she was a well balanced bitch with free effortless movement — too effortless, the family thought, when she gave them the fright of their lives by scaling over a six foot wall. Maeve became the family's introduction to showing and later to breeding. She proved her quality as a brood bitch by producing South African Ch. Athcarne Daragh when bred with Ch. Ballykelly Reamonn. Later when bred with Ch. Boroughbury Justice she produced American Champions Dulta and Cara. Athcarne Shiofra was the puppy they kept from this breeding. She went on to become an Irish champion and successfully gave rise to the present generation Athcarnes.



Coill Tomair Maeve, Bernard of Cordoogan,  
Ch. Athcarne Shiofra.

Tony & Ger's first male was Bernard of Cordoogan who carried Ballykelly, Ballytobin & Nendrum lines, as did Maeve. To use Tony's own words "Bernard was big of body and big of heart" — he weighed 150 pounds. A successful stud dog, Bernard sired Finnish Ch. Ballykelly Rogan, top winning Irish Wolfhound in Finland for two consecutive years. His wins included Best in Show at the Swedish Specialty.

Sadly, Tony & Ger lost Maeve and Bernard as well as their little crossbred gundog "Goldie" all in the same year. With the death of Maeve, her daughter, now Ch. Athcarne Shiofra, gently eased herself into that special place in the heart of the family. Shiofra was a bitch that always caught the eye of the judges, especially because of the quality of her movement which allied to her good type produced a winning combination. Mr. R. M. James, judge at the 1975 Irish Specialty wrote "moves beautifully, she skims over the ground without effort with great long reaching action". Shiofra possessed a lovely head with a beautiful eye and a quality that sets the Athcarnes apart, an extremely harsh, thick coat of nice length. Shiofra won the movement trophy at the Club show of the Irish Wolfhound Club of Ireland on three separate occasions, 1975, 1976 and 1978.

Shiofra was an exceptionally good mother, always giving her pups the best care and nourishment. She had three litters. First in 1977 she was bred with Gwernfyed Lleigus of Carrokeel, producing among others Finnish Ch. Athcarne Bran who was top winning Wolfhound in Finland for four consecutive years. Later Tony & Ger introduced new blood into the country by bringing Shiofra to Britain for breeding. Their choice was the then young Eng. Ch. Outhwaite Am Cu who was an impressive performer in lure coursing contests as well as in the show ring. Shiofra was bred to Am Cu twice. From the first litter, Tony & Ger kept Athcarne Fintan (Finbar), the litter also produced Canadian Ch. Athcarne Fran and Irish Ch. Coolbreagh Athcarne Clodagh.



Athcarne Fintan

Athcarne Fintan had many good points in his favour, especially his ability to stride out as he went around the ring. He was poetry in motion, as he used his shoulders, stifles and hocks to maximum effect, flexing and extending them to produce an effortless but forceful action. If he had been campaigned more extensively he would certainly have finished his championship. Like his sire, Fintan excelled as a lure courser, winning our Club's 1983 lure coursing event and was second the following year. Even though he was not used extensively as a stud dog, his progeny have left their mark on the breed in Ireland.

Fintan's litter sister, Clodagh had some spectacular wins on her way to championship, e.g. Green Star St. Patrick's Day 1980 and Best of Breed the following year. Again in 1981 she took Best of Breed at Swords, our second biggest all-breed show. Clodagh, like the rest of the Athcarnes is always game for the chase. She recently amused everyone at a small informal gathering of hounds by continually scanning the field looking for the non-existent lure.



Ch. Coolbreagh Athcarne Clodagh



Carokeel Moon Beam of Nendrum

In the late 1970s, Tony & Ger were pleased to accept Carrokeel Moonbeam of Nendrum (Sugru) from Betty Murphy. Sugru (meaning playful), a daughter of Eng. Ch. Eaglescrag Toby and the beautiful Carrokeel Karen, was a bitch with plenty of type and quality but lacked a little in height. Her quality did not always catch the eye of the all-round judges but her beautiful head and curved outline were always noticed by breed specialists. She won Best of Breed at Bray under Jim Behan and Best of Breed again at Combined Canine under Tony Doyle. Sugru was bred to Athcarne Fintan and produced among others, Athcarne Cian, Athcarne Grainne Dawson, and Athcarne Eimer who is now with Betty Murphy. Cian, owned by Catherine Abbott, though shown little, has made a good impression especially when he won Best of Breed at the 1983 Club Show.



Athcarne Neesha

Ger & Tony kept Athcarne Neesha from Ch. Athcarne Shiofra's second litter by Eng. Ch. Am Cu. Neesha is a tall bitch possessed of a lot of quality, she was Green Star winner at the 1983 St. Patrick's Day show. In 1983 Neesha was bred to Carrokeel Kalypso. Athcarne Eadoin (Ada) was kept from this litter. Two of Ada's litter sisters went to Dr. Paul Palmer, a Wolfhound Specialist judge in the U.S.A. One of these young bitches now with Mr. & Mrs. Dave Sherwood, won the Open Class at the West Coast Specialty, 1985 and at the Santa Barbara Show she won Open bitch, Winners Pitch and Best of Opposite Sex. Dr. Palmer wrote to Tony & Ger "these two sisters should inject some genes for steel wire coats, head, small ears and great shoulders into the American gene pool".



Athcarne Banshee

Tony & Ger have two young bitches at present which they hope will carry on the fine record of their predecessors, as well as Ada they have Knocknarea Blathnid — daughter of Athcarne Oisin (Oisin is litter brother to Ada) and a new puppy has just joined the Athcarne family of hounds — Coolbreagh Crana, a daughter (black) of Ch. Coolbreagh Athcarne Clodagh and Killykeen Mars.

Tony & Ger and their three children, Cianán, Colm & Gráinne live in Athcarne Cottage which was originally built as the herd's residence for Athcarne castle. The latter, alas, is now just a ruin. Although, commitments of a young active family do not allow them to attend many shows in the year, Tony is an active committee member of the I.W.C. of Ireland with special responsibility for the rescue section. Tony was show secretary and show manager for a number of years.



Tony & Ger with all the family

The success of the Athcarnes is evidenced by the widespread use of the line by other Irish breeders.  
*Compiled by Billy Clarke*

## Annual General Meeting

The 59th Annual General Meeting was held at the Ashling Hotel, Dublin, on 17th November, 1985.

The Chairman opened the meeting and welcomed the members. He called for a minute's silence in memory of our President, Miss Noreen Twyman and an old respected member, Mr. John Grogan.

Scrutineers were proposed and accepted as follows:

Miss G. Fottrell  
Mr. D. Fagan  
Mr. Burke

The minutes of the previous meeting were read.

Miss E. C. Murphy proposed acceptance, Mr. Clarke seconded.

### Matters Arising

The breakdown of registrations of all puppies in 1984.

It was stated that we had received letters from the I.K.C. agreeing to do this and we had sent a cheque for £50 as a donation towards the cost, but we had now received a letter from the I.K.C. stating this could not be done. Mr. Behan gave details of a meeting he and Mr. Finney had had with Mr. Martin following the final letter. Mr. Martin had stated that this was privileged information and could not be released without the consent of the breeders concerned. Mr. Rathbone-Scott proposed that we write to the I.K.C. to ask where it is stated in their constitution that this is privileged information. Mr. Redmond seconded this. Mr. Rathbone-Scott asked whether the £50 had been refunded. Mr. Finney reported we were applying for this. Mr. Behan suggested we request written permission from all members in order to get the necessary information. Members were very angry at the lack of co-operation from the I.K.C., particularly as it was pointed out that details of registrations were available freely from the English Kennel Club and Kennel Clubs in other countries. In fact a complete list of registration was published in the latest magazine of the Irish Wolfhound Club (England). It was felt that the I.K.C. was doing a disservice to our breed.

Mrs. Mernagh brought up the question of the voting papers at the last A.G.M. and wanted to know whether the promised subscriptions had been paid up, and was told that this had been done just before the meeting. She said she thought it was totally wrong that it had not been done immediately and it was not honourable behaviour. Mr. Finney said the position was cleared up now.

### Treasurer's Report

The Treasurer produced his accounts.

Miss Murphy proposed acceptance and Mr. Rathbone-Scott seconded. The accounts were accepted and Mr. Finney was congratulated on his work. He reported that the valuation of the Cups and Trophies was proceeding and so far was in excess of £13,000.

The question of family membership or junior membership was brought up, it was agreed to leave it to the Committee.

The proposed increase in the subscription was discussed and Mrs. B. Rathbone-Scott proposed acceptance and Miss Walton seconded and it was agreed: £4.00 per annum, £5.00 for overseas members. Joint Membership (Husband and Wife) £6.00, overseas £8.00.

### Secretary's Report

The Secretary again reminded the Club of the sad loss to the Club of our President, Miss Twyman, she said she would be badly missed for her help and

advice, she was down to earth and completely honest in all her dealings, considering only the good of the breed. We had also lost John Grogan, a long standing member and a breeder of repute.

She reported a healthy interest in the Club in the past year, 33 new Associate Members and 7 Associate Members were accepted as Full Members. The total membership was approximately 200, 80 of which were from overseas.

She again reminded Associate Members that they must apply after two years if they wish to become Full Members.

She reported that enquiries for puppies had been few and far between and asked members to consider carefully before breeding and to consider only the good of the breed and to carry out the duties of Members as set out in the Rule Book.

She stated that the Committee had hoped to give a breakdown of the registrations in our next magazine, but we had been blocked by the I.K.C., and had been told that such information could only be released with the permission of the breeders. She asked 'What has anybody to hide?' She pointed out the many changes in progress in the I.K.C., the main effect to date has been an increase in all charges and a rule to the effect that only members of the I.K.C. could register or transfer any dogs. This means that there will be an increase of £5.00 to pay (Ass. Membership of the I.K.C. subscription).

She said that there had been an excellent turn out despite the weather. The Committee had decided to run an Official Open Show in conjunction with the Waterford Open Show. There were nine classes and 37 hounds were entered. Mr. Michael Daly judged and Mr. Behan's lovely old bitch 'Beauty' took the Cup and Mr. Pritchard's Ballykelly Doolough won the Ballyvalla Tray, kindly donated by Mr. Liam Mernagh.

On the subject of Trophies, the Committee decided to open a fund for the purchase of a trophy in memory of our late President and hoped to raise sufficient money to get something really worthy of her service to the Breed. Her friend, Mrs. Wendy Howell, had opened the fund with a cheque for £100. To date the Fund stood at £320 and she said she would be pleased to receive any further donations. She again asked to be advised of any changes of addresses and any puppies available, also any other points of interest to the Club and apologised for any errors and omissions.

### Cups & Trophies

The addition to the Rules on Cups & Trophies as set out in the Agenda

Viz: Cups & Trophies cannot be taken overseas, however in these cases, the Club will have the overseas winners' names inscribed at the Clubs expense.

This was proposed by Mr. M. Rathbone-Scott and seconded by Miss E. Murphy and was accepted.

### Rescue Fund

Mr. Redmond said this had been a better year, only 2 or 3 dogs had needed homes. The Fund now has £319 and £180 had been spent this year. Mr. Redmond asked for a Register of possible homes and asked for more help from members to find them.

He reported that for once Mr. Behan hadn't been driving round all year on Rescue business.

Mr. Behan asked to bring to the notice of the Club the excellent work done by Miss Walton for the Rescue Service.

### Discussion

There was a very heated discussion on the new Rules of the I.K.C. Members felt that they were very unfair, particularly to members outside the Republic and it was suggested that dogs already registered would be shown here, but any new dogs would not be registered and so could not be shown and in consequence entries at Shows would go down. It was felt it was almost an infringement of human rights, certainly 'canine rights'.

### Election of Officers and Committee

Mr. Finney reported that 51 ballot papers had been received and the new officers and committee appear on page 1.

Mrs. S. Rathbone-Scott proposed a vote of thanks to our Scrutineers.

### Any other business

Miss Walton proposed that anyone who brought back any Cups or Trophies damaged should not be allowed to take any in future years. Mr. Behan suggested that extra people should help at the Show. A sheet should be issued with each Cup stating the damage when it was handed out.

Mr. Finney stated that as some of the Cups were very valuable, what did the meeting think as to whether they should be given out. The Committee was asked to consider replicas.

A vote of thanks was proposed to Miss Murphy for her Get-together which was very successful.

Miss Murphy asked for a special tribute to be paid to Miss Sheelagh Seale for all she had done for the breed. She stated that she had never heard her complain whether she won or lost and she was the best sportswoman in the Club. This was heartily agreed.

Mr. M. Rathbone-Scott asked what the position was regarding the reprinting of the Rule Book and Mr. Finney stated that new books would be done this year.

Suggestions were asked for the Twyman Memorial Cup.

These were:

Junior Handling Class

Breeders Group

Presented to the person who did most for the Breed during the year.

The final decision was to be left to the Committee.

A vote of thanks was proposed to the retiring Committee and also to our visitors from overseas:

Mr. & Mrs. Mann from U.S.A.

Mr. & Mrs. Hughes from U.K.

Miss Walton asked for more Summer parties.

---

### OUR CLUB BADGE

Green and Blue Enamel with head reversed in silver now available.

Price £4.00 + 50p Postage & Packing from Club Secretary

---





# 1985 Championship Show

Ireland in early summer is beautiful; the Irish people in early summer are relaxed, good humoured, sporting; the great hound of Ireland, the Irish Wolfhound, in early summer is hard, in fine condition and, as always, most gentle and good natured. Saturday 8th June 1985, when The Irish Wolfhound Club of Ireland held its Diamond Jubilee Show at Swords, proved no exception, for it was a marvellous day, everyone good humoured, the hounds in general in good condition, well turned out, and the majority, thank goodness, with correct weather coats. They needed them, for the afternoon judging was completed in continuous heavy rain — or perhaps as everyone and everything continued to seem to be enjoying themselves, it ought to be described as “refreshing Irish mist”.

In general the standard of hounds was most pleasing to me and I consider, with continued careful breeding, this portends well for the breed's future. In particular I was most pleased to see a Veteran Class of such a high standard and of great average age, they were true veterans and in excellent condition. This is what we should be endeavouring to achieve, the Irish Wolfhound living to a grand old age, still healthy and enjoying life — I have never seen so many so old, healthy and happy at one time — congratulations.

On the day, I made notes of all three placed in each class; unfortunately the rain that descended during the Bitch classes didn't help when deciphering them, but I managed other than in one case.

When deciding upon Best in Show between the dog Ch. Kellybourne Pilot at Ballalyn and the bitch Int. Champion Tullygirvan Liadain, the dog's great size and presence, his bone and substance prevailed over the beautiful feminine smaller bitch.

I enjoyed my day, judging my favourite hounds, being with friends — what more could I wish for.



## PUPPY DOG

1. Taylor's Killcullen Remus. Pleasing grey brindle, good bone and substance for age, good length and topline, breadth and shoulder, movement somewhat loose and should tighten up — but it is a puppy and maturity will correct.
2. Watson' Connel. Another grey brindle with good bone and topline, not so well balanced at present at (1), a rather short neck, less outgoing than winner.
3. Seale & Hughes' Ballykelly Termon. Wheaten, wide chest, well letdown hock but rather straight topline, light eye spoilt expression and curled tail balance.



## JUNIOR DOG

1. Killykeen Doyle & Marchment's Killykeen Mars. Grey brindle of good outline, pleasing head with good furnishings, nice length of neck well set into flowing topline, movement very loose but true, muscle could be much better.
2. Carlisle's Chapelleigh Rurun. Light red brindle, pleasing head but with light eye, good bend of stifle and well let-down hock, moved well.
3. Wilcox's Bearna-bui Rurik. Dark brindle, stockier than previous two, very good substance and condition, lovely hindleg and quarters but spoilt by bringing up his tail somewhat.



## NOVICE DOG

1. McCumisky & Millar's Carrokeel Mulligan. Attractive red wheaten, good pigmentation, head furnishings and expression; he had good substance, bone and muscle, looked good on the move but slightly ringed his tail.
2. Wilcox's Athcarne Oisín. Dark grey brindle, good bone, long in the back, didn't move as well as winner.
3. Taylor's Kilcullen Remus. Winner of Puppy Class.



### GRADUATE DOG

1. Kelly's The Earl of Nutstown. Dark grey dog, with good depth of chest, nice neck leading into good topline, in all a nicely balanced hound. He moved in a rather le. rgic manner but truly.
2. Irving's Finbar Eireanhon. Light brindle with a pleasing head, neck and shoulder, a good topline and bend of stifle. He had a rather wild expression, and whilst he moved with some vigour was erratic.
3. Ryder's Carrokeel Argus Ryder. Dark grey with a good head and furnishings, he moved well. Feet and hindquarters could be better.



### LIMIT DOG

1. Kelly's Chieftain of Nutstown. Black, of fine shape, a balanced galloping hound, with pleasing head and expression carried well on a strong neck set nicely into a good shoulder and firm strong topline. He moved well and with presence. Would like a better bend of stifle and more width to the thigh.
2. Daly's Saringa's Mr. Arritza. Grey, of good bone substance, he has a good front and fair shoulder but too straight in the topline. He moved well.
3. Walton's Blaenrí Bryn. An attractive wheaten of good shape and size, his coat could be harsher, he didn't move as well as those above him, and appeared to be a little down on his pasterns.



### OPEN DOG

1. McMillan's Eng. Champion Kellybourne Pilot at Ballalyn. A mature red hound, well balanced, good bone and substance, in good coat, muscle and condition — obviously the Irish air and atmosphere suit him. He carried himself well with presence and moved with drive and determination. Well deserved his Green Star and Best in Show.
2. Sharpe's Eng. Champion Marumac Cedric of Telgar. An attractive light wheaten with good head carriage, pleasing topline and lovely bend of stifle then let-down hocks, he moved well but rather listlessly and I preferred the head of the class winner.
3. Finney's Champion Gulliagh Galleon. A grey brindle of most attractive type who moved really beautifully. I would like just a little more to his hindquarters, and in particular more bend to his stifle.



### PUPPY BITCH

1. Walton's Tolkavalley Ardmore. A shapely black bitch of promise, with a long neck, a good shoulder and front, nice width and bend of stifle, for one so young. Also moved well.
2. Walton's Tolkavalley Ardkeen. Another very dark bitch, I now find is from the same litter as the winner of this class. She is not as shapely as her sister but moves just as well.
3. Wilcox's Carrokeel Nuantia of Chulchoill. Dark brindle baby; whilst she didn't have the substance of (1) or (2) she was most attractive, with a pleasing topline, and she also moved well. Perhaps a little light of eye.



### JUNIOR BITCH

1. Finney's Hydebeck Nessa of Guiliagh. A tall red brindle who excelled in length and good topline. She was well balanced and she also possessed good bone and substance, with excellent muscling especially in her hindquarters. She also moved well.
2. Clarke's Coolbreagh Brega. A grey brindle with good head and beautiful expression, nice length of neck, a well-made frame of good bone and a good spring of rib. She moved well.
3. Rickaby's Marshgrove Trixies Queen. Another grey brindle of good substance with a well-laid shoulder and good hindquarters, but not so good on the move as those above her.



### NOVICE BITCH

1. Cairn's Orlaith. Dark red brindle, not the biggest but well balanced, good length, nice spring of rib, good legs and quarters. She moved very soundly.
2. Sugars' Reemaid of Callaighstown. Brindle bitch with good front, topline and hindquarters. Not the spring of rib of the winner, nor did she move as well.
3. Peiler's Athcarne Nora of Knocknarea. Grey brindle with nice topline; lacked the presence of (1) and (2). Could move better.



### GRADUATE BITCH

1. Rathbone Scott's Tullygirvan Bridget. Red brindle of lovely type, good length of neck, well-laid shoulder, nice topline, pleasing substance and bone. She moved positively and truly.
2. McCoy's Cu-Uladh Carrokeel Oonagh McCoy. Attractive light wheaten with good pigmentation and excellent texture of coat. She had very good quarters and moved well.
3. Tebbit's Caredig Electra. Very feminine grey with lovely head and expression, her furnishings were beautiful and her coat very good, she was most pleasing to the eye — but she could have moved better.

### LIMIT BITCH

1. Murphy's Carrokeel Athcarne Eimar. Dark grey, well-balanced bitch of pleasing shape and substance yet beautifully feminine. She moved very soundly.
2. Tebbit's Caredig Electra. Third in Graduate Class.
3. Hughes' Longstown Summer Glow. Grey bitch of nice type with a nicely laid shoulder. However she didn't do herself justice on the move.



### OPEN BITCH

1. Rathbone Scott's Int. Champion Tullygirvan Liadain. Attractive, feminine red brindle, well constructed with good bone and substance, good front and feet, well-laid shoulder, firm topline and



excellent quarters, she was well balanced when standing and remained so on the move. Her movement was sound.

2. Finney's Gulliagh Ballykelly Cait. Dark grey, of very good shape, also moved well. I would like her to have a better bend of stifle.
3. Walton's Tolkavalley Tory. A red brindle bitch of good type. Unfortunately the prevalent rain washed away my notes after that point.



#### VETERAN DOG OR BITCH

1. Behan's Champion Mary of Nutstown. A superb nine-year-old dark bitch. Her super outline and ability to move like a dream belies her age, she is marvellous, she is capable of competing on even terms with bitches and dogs half her age, and proves it on this occasion by winning the Movement Cup against all and the Reserve Green Star for Bitches. Her owner and breeders deserve one's highest commendation.
2. Finney's Int. Champion Carrokeel Coillte Merlin. Grey dog in fine condition, his frame is still excellent with a well-laid shoulder, depth of chest, length of neck and good legs. He is slightly corpulent but moved well.
3. Kelly's Int. Champion Nutstown King. Dark but greying, a great old hound, who still retains his presence, his great depth, his excellent bone, his lovely type. Once again his age is apparent in his lack of tuck-up — and why not?
4. Clarke's Champion Coolbreagh Athcarne Clodagh. A beautiful red bitch of lovely type and in great condition and still sound. A great credit to her owner.



#### BRACE

1. Kelly's Chieftain and Sorcha of Nutstown.
  2. Walton's Tolkavalley Ardmore and Ardkeen.
  3. Walton's Tolkavalley Aoibhinn and Iona.
- Judge: Mr. R. Baird.

Photographs by Miles Rathbone-Scott.

## The Wolfhound Club of Ireland Open Show Waterford — August 1985

JUDGE: Mr. M. Daly

**Puppy D:** No entries.

#### Special Yearling D

- 1st — Chieftain of Nutstown (Mr. & Mrs. J. Kelly).  
2nd — Carrokeel Mulligan (Misses McCumiskey & Millar).  
3rd — Bearn Buí Rurik (Mr. & Mrs. Wilcox).  
Reserve: Athcarne Oisín (Mr. & Mrs. Wilcox).

#### Graduate D:

- 1st — Carrokeel Bearn Buí Donal (Misses McCumiskey & Millar).  
2nd — Athcarne Oisín (Mr. & Mrs. Wilcox).  
3rd — Teige of Tiobrad (Mrs. M. Commings).

#### Open D:

- 1st — Ballykelly Doolough (Mr. G. Pritchard).  
2nd — Teige of Tiobrad (Mrs. M. Commings).

#### Best D:

Chieftain of Nutstown.

#### Puppy B:

- 1st — Tolkavalley Ardkeen (Miss I. Walton).  
2nd — Carrokeel Neata of Chuchoill (Mr. & Mrs. Wilcox).

#### Special Yearling B:

- 1st — Tolkavalley Ardmore (Miss I. Walton).  
2nd — Nora of Knockbrack (Mr. G. Kelly).

#### Graduate B:

- 1st — Kracken Comet (Mr. & Mrs. J. Kelly).  
2nd — Ballyvalla Aoife of Moonvoy (Mr. L. Mernagh).

#### Open B:

- 1st — Sorcha of Nutstown (Mr. & Mrs. J. Kelly).  
2nd — Galtymore Pride (Mr. & Mrs. M. Thorpe).  
3rd — Carrokeel Clasby (Mr. S. Buggle).  
Reserve: Tolkavalley Tory (Miss I. Walton).

#### Special Veteran:

- 1st Mary of Nutstown (Mr. J. Behan).

#### Best of Breed:

Mary of Nutstown (Mr. J. Behan).

**D or B Never having won a Green Star** (Ballyvalla Tray).

Ballykelly Doolough (Mr. G. Pritchard).

#### The Irish Wolfdog by

Hogan & Graham

Price £10.00 (airmail postage £1.50 extra)

Send remittance with order to:

Mr. T. Finney,  
The Hon. Treasurer,  
Gulliagh Farm,  
Lecklinstown,  
Naul,  
Co. Dublin.

## Belfast Championship Show 1985



Best of Breed, C. C. Bitch, Mr. & Mrs. Thorpes GALTYSMORE PRIDE OF KEEREEN. A typical, balanced, well constructed bitch. Moved beautifully. Best shoulders I have seen for quite some time. It was this strength which won her Best of Breed award.



C. C. Dog, Mr. & Mrs. Finney's CH. GULLIAGH GALLEON. Attractive well-made and typical hound with plenty of quality. A worthy C. C. winner. I believe he went on to win the champion stakes — all breeds.

Res. C. C. Bitch, Mrs. Clyde's WHYSER OF LAINSTON. Most attractive typical bitch with lovely outline. Just needs a little more substance to bring her to C. C. standard.

Res. C. C. Dog, K. McCumiskey & M. Millar's CARROKEEL BEARNA-BUI DONAL. Attractive, well built hound in excellent physical condition. Still only a yearling, he looked immature beside the C. C. winner.

1st Junior Dog, K. McCumiskey & M. Millar's CARROKEEL MULLIGAN. A very promising young hound in very fit condition. Lovely head and dark eye.

Post Graduate Dog, 2nd. Mr. & Mrs. Nowell's HYDEBECK REGINALD SNUFFSON, very close decision between 1st (Res. C. C. winner Carrokeel Bearna-bui Donal) and second in this class. Second lost to first on hind action.

Limit Dog, 1st. Mr. G. Pritchard's BALKYKELLY DOOLOUGH. A large handsome hound. His commanding appearance over-shadowed any qualities he lacked.

Junior Bitch, 1st. Mr. W. Garrett's SHEILA OF CLINTA. Nice, well made young bitch, front movement needs to tighten up a little.

E.C.M.

## Dun Laoghaire Championship Show Monkstown, August 1985

My visit to Ireland was really enjoyed and it was so nice to meet old friends and be met with the usual Irish warmth and hospitality.

I was pleased to be asked to judge my favourite breed, inspite of the bad weather, and all the exhibitors who brought their hounds under me to be judged. It gave me great pleasure to watch my Green Star Winners move around the ring together showing the drive and power needed to do the job that they were bred for. The Hounds were all so well behaved. A few light eyes that tend to harden what should be a soft expression. I only came across one bad bite, and coats had good texture. There were some promising youngsters, and general shape and overall balance was good.

### PUPPY DOG: Kilcullen Ray

A 10 month old grey brindle. Lovely head and neat ear, would have preferred a darker eye. Good overall shape with ample depth of chest with well sprung rib. Nice arch over the loin with a well set tail of good length. Moved well behind for his age but still needs time to tighten up in front.

### NOVICE DOG: Carrokeel Mulligan — 1st.

A 15 month old cream of good size and shape. A very promising dog moving true with strong bone and straight front legs. Lovely head and expression with dark eyes and neat ears carried on a strong neck going into a well laid shoulder. Good depth of chest and spring of rib. Nice top line following over a good arch of loin. Tail carried correctly. Such a pleasant character, quite the charmer, should have a bright future.

### Glen na Smol of Nutstown — 2nd

A slightly older hound than 1st but perhaps needs more time to come together. A strong youngster with lovely head and expression. Good top line and nice flowing lines. Movement still loose and tended to move rather wide in front. Ringed his tail on the move.

### GRADUATE DOG: Earl of Nutstown — 1st

A strong dog that did not do himself justice trying hard to hide his good points by moving sluggishly. Lovely head and neat ear with kind expression, slightly stuffy in the neck which stripping would enhance. Good shoulder and strong front, nice spring of rib, a good top line. A true sort with correct coat and well set tail.

### Carrokeel Bearna-Buí Donal — 2nd

A big wheaten dog with nice head and expression, a strong male and enjoying his day out. He moved with enthusiasm but unfortunately carried a very curly tail set high into the croup spoiling his top line. Like his kennel friend Carrokeel Mulligan he had a super temperament, so important in such a big powerful breed. Good front with well placed shoulder and a nice spring of rib. Would have liked more length in his back.

### Carrokeel Argus Ryder — 3rd

### LIMIT DOG — Lenhams Trispor Orion of Ballalyn — 1st

A tall cream with good head. Nice front and shoulder, would have liked more spring of rib and front feet tended

to turn slightly east and west from the wrist. Strong quarters and good bend of stifle. Moved and showed well. Not showing his six years.

**OPEN DOG — Eng. Ch. Kellybourne Pilot at Ballalyn — 1st Green Star B.O.B.**

This dog never stopped showing from the moment he entered the ring. A big red wheaten of great fame and show achievement. It was a pleasure to judge him and award him the G.S. and B.O.B. He went on to win Reserve in the Hound Group. Turned out to perfection, moved with drive and strength of low set hocks from strong second thigh. Flowing lines and correct balance. Typical head and true expression carried high on a strong neck giving a true impression of type. I believe he gained his Irish title on the day.

**Irish Ch. Gulliaigh Galleon — 2nd**

This dog impressed me with his size and strength. A tall dog with overall balance and true type. Good head and correct ear carriage. Lovely lines and sound movement. Good top line with nice length and shape. Strong bone good spring of rib and well bodied up. 1st won over him by more rear angulation and breadth through the stifle. I was pleased to award him the Reserve Green Star.

**Irish Ch. Chieftain of Nutstown — 3rd**

**PUPPY BITCH: Tolkavalley Ardkeen — 1st**

What a sweetheart, her temperament was lovely. Her tail never stopping 'wagging'. A 10 month old black with excellent head and expression, long neck going into a well laid shoulder, good top line with nice arch over the loin. Good movement front and rear being extremely steady for her age. A little lady with a promising future ahead of her. I would have liked to have taken this one home with me, she quite won me over.

**NOVICE BITCH: Reemaid of Callaighstown — 1st**

Such a nice bitch standing, unsettled which did not help her movement. After a second attempt she showed that she could move well. Lovely head and furnishings, good overall balance and body shape. Drove well from behind with nice breadth across the loin. Good depth of chest and shoulder placement. With more time and training, a bitch that could go on to do well.

**Marchgrove Trixie Queen — 2nd**

Same age as 1st but smaller and lighter in bone and frame. A pretty bitch of nice shape. Another who was hard to settle tended to pull away from her handler making her cross over in front.

**GRADUATE BITCH: Tullygirvan Bridget — 1st Green Star**

On seeing this bitch I wished the ring had been so much bigger. She was a joy to watch moving, pushing herself along from strong quarters, driving off a low set hock with good breadth through the second thigh. Not a big bitch but indeed a strong one. A sweet expression and had tiny rose ears, would have liked more furnishings on head and face. Strong neck with reach into a well laid shoulder with straight front. Slightly long in body but with beautiful shape and curves, it all came together on the move, feeling that she could have gone on running all day. I was pleased to award her the Green Star.

**Hydebeck Nessa of Gulliaigh — 2nd**

A tall elegant bitch with a long neck and a good front and shoulder. Still a big baby and one that needs a lot of time. She moved loosely and looked somewhat immature in the line up. A bitch I would like to see again in a few years.

*Continued on Page 23*

## Irish Wolfhounds Carlow, September 1985

Best of Breed was won by a charming, feminine, yet very substantial, wheaten bitch, Carrokeel Clasby, whose lack of enthusiasm for the showing is most unfortunate, as I feel she is such a lesson in Wolfhound type, that she should be shown everywhere. We often use the expression "does not like showing" when we actually mean "shy"; this bitch is certainly not shy, but, instead, truly bored with the mechanics of the showing, standing and moving. Lovely head and expression, deep capacious body, proper angulation fore and aft, nice length of body which is something I like to see in a bitch. Beautiful broad hindquarters as seen from the rear with well muscled thighs and second thigh. Wonderful, powerful rear drive.



*Carrokeel Clasby*



*Chieftain of Nutstown*

Best of Opposite Sex was Ir. Ch. Chieftain of Nutstown. Still a young dog, who should grow in substance over the next year, I feel, to make up into a lovely hound. Won a close decision over the Reserve Green Star winner, Ir. Ch. Gulliaigh Galleon, on his presence, head, eye and ears, while also moving with considerably more enthusiasm.

Reserve Green Star bitch was a lovely young bitch, Tullygirvan Bridget, stylish and full of go. Not in full coat which detracted from the general impression. Should have a lovely future.

I hope you will allow me some general impressions. On the whole Wolfhound type is much more



homogeneous in Ireland, that is, they are much more alike than we are used to seeing in England, where so many sizes, shapes, and outlines abound. I found therefore that it was much easier to assess the dogs shown under me.

No, the movement in general was certainly not good; it did occur to me that many of the dogs shown were in very soft all over condition. What good is owning a Wolfhound if you don't give it a chance to do what it is bred for — namely, to run? So many were overweight, and while I don't like a thin hound, please remember that the additional weight will probably shorten your dog's life! And never confuse muscle with width over the loin that is just fat.

Thank you for having me over to judge. I really enjoyed your well-known Irish hospitality.

*Dagmar Kenis*

## Longevity

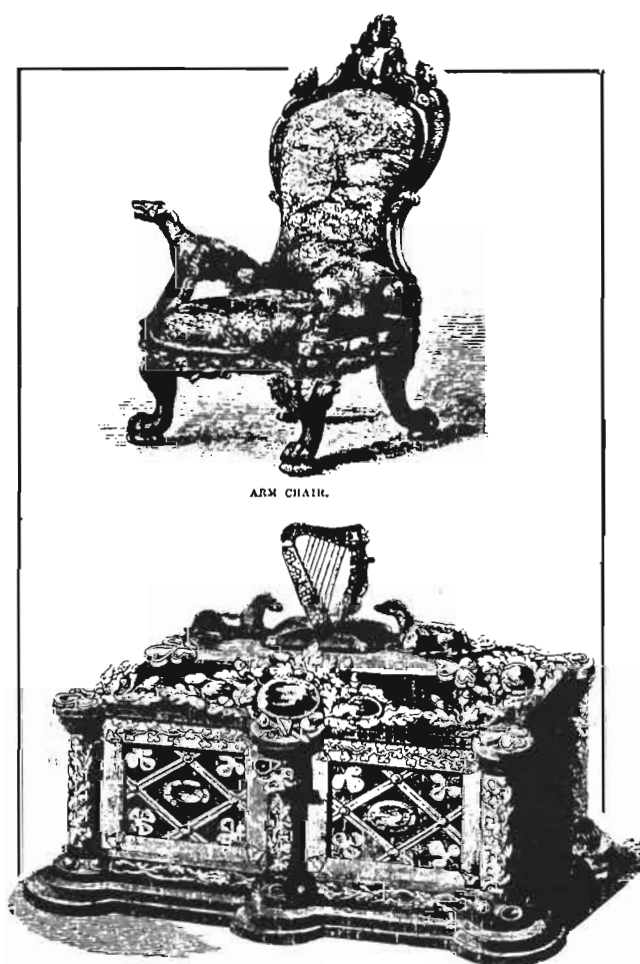
Longevity is a subject which is of special interest to all owners and breeders of Irish Wolfhounds. Concerned Clubs and individuals have been collecting data on age and cause of death and these statistics will all be valuable in helping to formulate reliable data on this very complex subject. Scientists cannot even begin to study the subject unless we, the owners, supply the material for evaluation. John Briggs, Hon. Sec. Irish Wolfhound Club (U.K.), 27 St. Helens Road, Dringhouses, York, YO2 2HR, England, would welcome the following information on Irish and English based lines: name of hound, parents and grand-parents, date of birth and date and cause of death. Even if you don't know the cause of death write a few words explaining whether you found her in her normal sleeping position, indicating that she passed away peacefully in her sleep, or if she had been unwell or failing beforehand. All information received will be treated as confidential. John Briggs himself will translate the information into facts and figures and when sufficient data is collected this will be made available to a research department interested in the work.

In the meantime we can all help by sharing our theories, exchanging views and inviting feedback. It seems to be generally accepted that long life is hereditary but can be strongly influenced by environment. For example, a hound born to have a long life could die at an early age from distemper if not vaccinated against it. It would appear that bone cancer is the biggest killer. Heart may not claim as many lives as bone cancer but is another very serious problem in our breed. Then we have bloat to worry about, a lower percentage killer, but so distressing because one has the feeling one should have been able to prevent it. These three conditions probably claim about 50% of our hounds — if not more. The other 40—50% of our hounds die of many other diseases, cancers and conditions which are common causes of death in all breeds. While bone cancer, heart and bloat are the most serious problems for our breed, if one only send records of hounds dying of these three conditions, this would give an unbalanced picture.

## GOLDEN AWARDS

Now that we have the collection of data on age distribution and causes of death in hand, let us fight the problem from another angle. Instead of giving all our attention to the early causes of death, let us acknowledge and congratulate the long lived hounds. How would it be if all I.W. Breed Clubs scheduled a GOLDEN AGE page in their annual show catalogues for hounds of ten years and older. A SILVER AGE page for nine year olds and, if thought worthwhile, a BRONZE AGE page for eight year olds. The usual catalogue information be given, owner, parents, d.o.b., breeder, etc., but no charge for entry. If possible the hounds should be present, not for competition but to accept congratulations and receive a certificate validating their longevity. These hounds would then be entitled to use this title in their pedigree, e.g. Ballykelly Gráinne (Golden Ireland 1986) then the relevant catalogue could be checked.

While the idea appeals to me that these grand old hounds should be allowed to appear in the ring and take their acclaim, I can appreciate that travelling long distances or having limited car space might make this undesirable. Maybe it would be better to have the GOLDEN & SILVER pages appear annually in our



## Examples of Irish-made Furniture of the 1850's

*(submitted by Miss Isobel Walton)*

Both the above articles were made in 1853 in Dublin. The armchair, one of a series of Irish historic furniture, has Irish Wolfhounds as elbowrests "supported on the legs and paws of Irish wolf-dogs". The casket is described as "especially an Irish work, and is made entirely of native materials. The wood is the black bog-oak, and is enriched with silver-gilt mountings and national emblems, the jewels being Irish diamonds and amethysts, which are of a large size, and have a peculiarly brilliant effect when mounted on the dark bog-wood."

breed magazines. Perhaps the entries would be accompanied by some verification.

With a few generations we could see the long-lived hounds in our pedigree and plan accordingly. If all breeders took longevity into account when planning their breeding we would increase the gene frequency for long life simply by increasing the number of long lived hounds in our pedigrees. It would be essential to the success of this plan that the ages of the short-lived hounds be recorded in the same way. People will be pleased to use the GOLDEN & SILVER titles but will be reluctant to participate in a scheme which reflects negatively on their breeding — and there will be many more short lived hounds than long lived ones. Non-breeders must understand that very few breeders would breed for long life at the expense of everything else. It is the hope and desire for excellence that keeps breeders breeding — and there is no way of knowing that the dog or bitch you use with your favourite line is going to die at a tragically young age. Most breeders consider a number of options when planning their breeding. Hounds showing a number of long-lived ancestors in their pedigree will be very favourably considered.

## ENVIRONMENT

Having thus taken steps to improve the inherited prospects for long life, now let us see if we can find ways of increasing the odds against unfavourable environmental influences. It is this aspect which interests most people who write asking for information on longevity. They have their treasured hound and they want to know if there is anything they can do to ensure that he lives as long as possible. Unfortunately, I don't have any ready answers but I can share with you the bits and pieces of information on the subject which I found of interest.

An article I wrote recently in THE IRISH WOLFHOUND QUARTERLY brought in some very interesting material from Terri Raeder (Wolf Rock I.W., U.S.A.). As the material she sent was her next column in the I.W.Q., perhaps I should acknowledge that source also. Terri introduces her piece with what is a well known old timer's comment in her part of the world "The longer they take to grow up, the longer they'll be with you" and she then goes on to show that this observation based on years of experience was proved scientifically in the 1930'.

"In the feeding experiment from which the conclusions were drawn, control rats were fed a well balanced, high calorie diet, free choice. They grew rapidly until six months, gained more slowly until 18 months when size and weight stabilized. They had an average life span.

*The experimental rats were given all essential nutrients, but starved for calories. They grew at very slow rates and weighed considerably less than the control rats at 18 months. Some were later fed the control diet and accelerated rapidly . . .*

The rats which grew slowly for a period beyond that over which rats normally grew and had accelerated growth late in life, had greatly lengthened life spans, and were, at maturity, comparable in size and weight to the control rats. Aging is truly inhibited by prolonging the growth period because onset of diseases characteristic of aging, is delayed in underfed animals. Lengthening of life span is continuing growth, rather than small size."

Terri continues: "Whether this principle applies to our dogs as well is a matter for thought and discussion.

Perhaps Betty's feeding Theory \*\* has shown some merit, in that modern dog foods are higher in calorie value and as a result puppies grow faster. Maybe we are in too much of a hurry to get them mature enough to show."

\*\* I had put forward the theory that the life span of our hounds seemed shorter since the arrival on the market of commercial all-in-one dog foods).

Terri quotes another interesting piece from Dr. Bustad's book ANIMALS, AGING, AND THE AGED. Masoro and Associates (1979) have shown that a diet of 60% of a full choice intake level of feed delayed the occurrence of most age-related changes and prolonged life spans remarkably. (The full text of Terri's interesting article will appear in the I.W.Q. Spring 1986 issue).

The feeding experiments referred to by Terri bring to mind Dr. Krook's now well known work at Cornell University in New York where he showed that over-nutrition in growing the Great Dane dog causes skeletal diseases. This in turn brings to mind Joe Donnelly's comment in his article on GENETICS (IRISH HOUND 1973) "I do not deny that any hound can get bone cancer, but during my study of the Irish Wolfhound I have found that the greatest percentage of bone cancer cases have been very large hounds. Kathy Darling quotes statistics from the National Cancer Institute (U.S.) that Wolfhounds are 185 times more likely to get bone cancer than small dogs and a Wolfhound male is twice as likely to develop the disease as the female. One cannot help wondering if quest for heavier and heavier bone is part of the problem. We would do well to remember that the Wolfhound is the equivalent of the hunter, not the carthorse. Yet, in spite of all the foregoing, I know that Joe Donnelly's puppies were always well above average weight when they were young and as mentioned in the next paragraph, his hounds lived to a ripe old age.

There seems to be evidence that bone cancer appears more frequently in some lines than in others, suggesting an inherited weakness. Increasing the gene frequency for long life should help in the battle at that front.

Joe Donnelly wrote a number of articles on longevity and he was well qualified to do work. At the time he wrote the article for the original edition of my own book he had six hounds, two were fourteen years old, one was ten, another nine and two "pups" at four years. He strongly advised avoiding stress in the dogs life, if he does not enjoy showing, then don't show him. When his hounds got older, he reduced the bulk of the feed and increased the vitamin content, always making sure the diet was balanced. He was a great believer in honey. I quote, "Honey is easily assimilated by old hounds and it increases the resistance to infection and it seems to relieve the aches and pains generally associated with old age. To my old hounds I give a tablespoonful every day plus 500 mg of vitamin C." In another article he said that he used to feed seaweed powder, but this is hard to get these days.

Honey comes up again in a very interesting book HOW TO HAVE A HEALTHIER DOG, by Wendell Belfield and Martin Zucker. On the subject of longevity, they write of Dr. R. J. Williams experiments showing that pantothenic acid (Vitamin B5) has a positive influence on longevity. Apparently, Dr. Williams became intrigued with the possibility that royal jelly, a secretion of the honeybee, vastly prolonged the life of the queen bees. Only queen bees product it. Royal jelly is the richest known natural source of pantothenic acid. He set up an experiment

to see if the vitamin would have a similar life-stretching effect on mammals. He took two groups of mice and treated them alike except that one group received an extra 1.3 mg of pantothenic acid in their daily drinking water, an amount several times more than mice are believed to require. The supplemented group had a 19% increased lifespan — in dog terms that would be 13 instead of 11 years. Williams warned against regarding pantothenic acid as a "miracle food" but was "willing to bet" that if people were to take 25 mg daily during their lifetimes, they could have an increased life expectancy of at least 10 years. The authors then go on to give some very interesting data on Pantothenic acid:

Pantothenic acid is sometimes referred to as the anti-stress vitamin because it is required for the production of good antibodies that are involved in protection against physical stresses, infections, and toxins. Dogs deficient in this nutrient exhibit reduced antibody response to the infection. Pantothenic acid is one of the three B complex members that have been linked to antibody production. The others are B<sub>6</sub> and B<sub>9</sub>.

Earl Mindell writes in his book *THE VITAMIN BIBLE* "During illness the body is under stress. Cells are destroyed, exhausted adrenal glands deprived of nutrients are unable to function properly, and the body's stress-fighting team of vitamin C, B<sub>6</sub>, folic acid, and pantothenic acid is severely depleted."

Don't over-dose, give a balanced tonic which contains the nutrients you feel are depleted. Remember, when a deficiency exists a little can work miracles, a lot can mean disaster.

## HEART

Heart problems claim about 10% or more of our hounds. Back once again to *HOW TO HAVE A HEALTHIER DOG*, Dr. Belfield writes "I believe that by providing a balanced array of extra vitamins and minerals to the dogs in my practice I have been able to build healthier cardiovascular systems." She goes on to quote the well known work of the Shute Brothers in Canada demonstrating the effectiveness of vitamin E supplementation in rejuvenating ailing hearts and circulatory systems and protecting healthy ones. She goes on to tell of our own Dr. Lambert's work with vitamin E. Although most of us in Ireland know of Dr. Lambert's belief in the efficacy of vitamin E, it was nice to learn that his work in the field has been internationally recognised.

Although Lambert's landmark work goes back thirty years, it is as valid today as it was then. At the Third International Congress on Vitamin E, in Venice, Italy, in 1955, Lambert described some of his experiences with vitamin E supplementation in more than 1,200 dog and cat cardiac cases.

Cardiac disease is relatively common in the dog, particularly in older animals, and Lambert found that vitamin E-treated dogs . . .

*appear to regain a feeling of well-being, exercise tolerance is increased, and many owners remark on the fact that their dogs regain their youthful behaviour. The coat and skin improve immensely, which is probably explained by . . . (vitamin E) promoting the health of the sebaceous glands.*

*It has been observed that in most cases a slight beneficial effect is noticeable even within forty-eight hours after starting vitamin E therapy. Originally small doses of alpha tocopherol (vitamin E) were used and these seemed to help many cases. But further experience with high dosage*

*levels, as suggested by the studies of the Shutes, has shown that larger doses (100 to 150 IUs daily) are much more effective. Many of the therapeutic failures, clinical and otherwise, mentioned in the literature, may be ascribed to inadequate dosage.*

Lambert went on to say that the marked improvement in the general condition of treated animals was due not only to enhanced circulation but also to the ability of vitamin E to restore normality to various tissues and organs such as the liver, testes, and stomach.

## BLOAT

Bloat or torsion is something we can help prevent by taking the following precautions:

Feed twice a day, with main feed in the evening; feed from a convenient height to reduce the possibility of air being gulped in with food. Any hounds with a tendency to gulp down food should be fed alone and out of sight of other dogs — they may be gulping to prevent another dog eating their food, or to finish their own and go on to the next dish. Do not exercise for two hours before or after feeding.

Early symptoms include unease, discomfort, inability to rest peacefully, retching, vomiting and abdominal swelling.

If caught in the early stages, before the stomach has flipped over, the veterinary surgeon may be able to release gas by passing a tube down the throat.

Heart attacks can give rise to symptoms much like the early stages of bloat — abdomen distended with muscles taut and board-like, inability to lie down, panting, distress, etc. Whether the symptoms are caused by bloat or heart, immediate veterinary attention is needed.

While most of the foregoing makes interesting reading — I particularly like the piece about the royal jelly — one must not lose sight of the more mundane but very essential needs of a healthy dog: a nutritious diet, plenty of exercise and a dry bed. Ensure that his vaccination programme is kept up to date and that he is treated for worms if and when they are present. Add to the above an adequate supply to T.L.C. (tender loving care) and you will have a healthy and happy hound.

## Acknowledgements

Terri Raeder, Onesquethaw Creek Road, Feura Bush, New York 12067, who specialises in researching longevity. My thanks also to Mrs. Sylvia Tourky, Doonin, Kilcar, Co. Donegal, Ireland who sent me copies of her collection of articles on Longevity, and who nudged me into researching the subject.

A special thanks to Mrs. N. Poston of Applearbor who sent me that most valuable book *HOW TO HAVE A HEALTHIER DOG*. Authors Wendell O Belfield, D.V.M. & Martin Zucker, published by Signet Books, U.S.A. I recommend this book to anyone interested in the subject of Longevity.

Finally, I pay tribute to Kathy Darling's excellent article in *HARP & HOUND* No. 2, 1974. She refers to Dr. Alex Comfort's most interesting article on I.W. Longevity based on the records of the Coolafin hounds from 1927-45. The latter I am saving for the next issue of *THE IRISH HOUND*.

E.C.M.



# Flashback

Reprinted from the Dublin "Evening Mail" of 16th September, 1933.

## Visiting in Dogland..

### WOLFHOUND KENNELS

MR. R. J. MAY, the President of the Irish Wolfhound Club, is an enthusiastic breeder and exhibitor of Irish wolfhounds ever since he purchased Michael of Malahide from Lady Talbot.

Close to the Round Tower or Swords, in the picturesque Swords Glen, is his fine kennel of this noble breed.

This fancier founded his present strain by the purchase of Bournstream Gloriana from Mrs. Finch. This bitch Gloriana was bred by Mrs. Beynon, and is by Veryan of Westervale ex Brenda of Hirdhead. She is a wheaten and has been used solely as a brood bitch.

His show bitch, Kitty of Fingal, now about three years old, looked very fit. She is by Int. Ch. Finbar and is a nice dark brindle. Shown under numerous judges, she always did well for her kennel. At Cork, under Mr. Sam Graham, she won the Green Star; whilst at Navan, Dublin (Boxing Day), and the Native Breeds' Society Show she was first in the Graduate classes.

At present she has two puppies, a dog and a bitch, both dark brindles; and we would like to record that the dog puppy is the heaviest we have seen for his age. He weighed 12 lbs. the day we saw him, when he was only four weeks old. These puppies are by Mr. Carter's Dark Dermot of Hollybrook.

Her sister, Nora of Ballisk, is a fawn brindle and has bred some good dogs, including Mrs. Crowley's May of Swords, who won the open bitch class at Limerick. She is also the dam of Conbeck, who is by Ch Connemara of Oubrough. He is only a year old and is 34½ inches high. In the prize ring he won at the Irish Native Breeds' Show and also at Limerick.

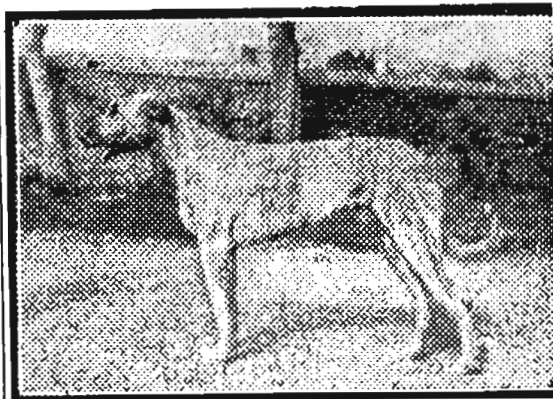
Another dog we saw was Tonlagee, or, to give him his kennel name, "Sandy." He is out of Bournstream Gloriana and is by Mrs. Laite's Lirdley Sinner. Both Captain Hamilton and Mr. Corcoran say that this young dog is the coming stud force in Ireland.

Running with the Wolfhounds we saw the well-known dark brindle Greyhound bitch, "Sally Twig," who is by Jedderfield ex Merry Moucher. Besides winning five stakes and a silver cup, this bitch is

also a bench winner, as she won in 1929 at the Irish Kennel Club Show.

Dogs from this kennel have been sold all over Ireland, and we think the best praise of this breed is to quote from a letter to Mr. May from Mr. Ernest Coleman, of Cove, who purchased his "Ballough."

"Paddy is a most extraordinary dog. I do not want to exaggerate one bit when I say I am short of words to give him the praise he deserves. He has not one single vice, thank God. He is most intelligent, a lovely companion in the town and house, and in the country as a hunting dog he excels all. He will hunt any class of game, and has caught already three rabbits single-handed. He



Ballough.

will beat up a whole mountain for game. He hunts by sight and scent, and is very fast.

"I have raced him on two local tracks with ordinary greyhounds and he was never more than about four lengths behind in a short run of 250 yards."

Mr. Coleman then goes on to state that he jumped a wall six feet high and will do another foot higher when trained.

What more fitting praise can a breed have than that given by Mr. Coleman?

**PYNECOT.**

Courtesy of Dr. Wm. Roche

## Green Star Winners — 1985

SHOW	JUDGE	GREEN STAR WINNERS	G.S. VALUE
I.K.C.	Mr. T. Thorn	Eng. Ch. Kellybourne Pilot at Ballalyn	B.O.B. 10
Combined Canine	Mr. D. McCoy	Nuala of Chapelleigh	10
Cork & District	Mr. Iley	Chieftain of Nutstown	B.O.B. 7
Hibernian	Mrs. M. Hitchens	Kracken Comet	3
Drogheda	Mr. B. Allen	Saringa's Mr. Arritza	3
Munster Canine	Mr. J. Daly	Newtownhill Miss Gwynne	B.O.B. 3
I.W.C.	Mr. R. Baird	Eng. Ch. Kellybourne Pilot at Ballalyn	6
Swords	Mrs. M. Majors	Sorcha of Nutstown	B.O.B. 10
Munster Agricultural	Mr. J. Kirk	Ch. Gulliagh Galleon	5
Kilkenny	Mrs. J. Van Schaick	Sorcha of Nutstown	B.O.B. 5
Sporting Breeds	Mrs. E. Mitchell	Chieftain of Nutstown	5
Bray	Mrs. P. Latimer	Sorcha of Nutstown	B.O.B. 5
Dundalk	Mrs. E. Young	Eng. Ch. Kellybourne Pilot at Ballalyn	B.O.B. 10
Monkstown	Mrs. M. Brooks	Ch. Tullygirvan Liadain	10
Clonmel	Mr. T. Creamer	Eng. Ch. Kellybourne Pilot at Ballalyn	B.O.B. 10
Killarney	Mrs. G. McDowell	Killykeen Banshee	10
Limerick	Mr. G. Hill	Chieftain of Nutstown	B.O.B. 6
Tralee	Mrs. C. Kingston	Ch. Sorcha of Nutstown	1
Irish Breeds	Mrs. M. O'Leary	Ch. Gulliagh Galleon	B.O.B. 6
Carlow	Mrs. D. Kenis	Keereen Lady	5
Bull Breeds	Mrs. S. Rathbone-Scott	Chieftain of Nutstown	B.O.B. 2
Dublin Dog Show Soc.	Mr. D. Dowdall	Ch. Sorcha of Nutstown	3
		Ch. Gulliagh Galleon	B.O.B. 5
		Ch. Sorcha of Nutstown	4
		Ch. Gulliagh Galleon	8
		Ch. Sorcha of Nutstown	4
		Int. Ch. Kellybourne Pilot at Ballalyn	B.O.B. 8
		Tullygirvan Bridget	6
		Ch. Chieftain of Nutstown	B.O.B. 5
		Ch. Sorcha of Nutstown	4
		Ch. Chieftain of Nutstown	B.O.B. 3
		Galtymore Pride	3
		Ch. Chieftain of Nutstown	B.O.B. 4
		Galtymore Pride	2
		Ch. Chieftain of Nutstown	B.O.B. 4
		Ch. Sorcha of Nutstown	3
		Ch. Chieftain of Nutstown	B.O.B. 7
		Ch. Sorcha of Nutstown	4
		Ch. Chieftain of Nutstown	6
		Carrokeel Clasby	B.O.B. 9
		Ch. Chieftain of Nutstown	3
		Galtymore Pride	B.O.B. 3
		Ch. Gulliagh Galleon	B.O.B. 8
		Ch. Sorcha of Nutstown	5

### HOUD GROUP WINS:

Combined Canine  
Hibernian  
Munster Agricultural  
Dundalk  
Dublin Dog Show Soc.

Chieftain of Nutstown  
Sorcha of Nutstown  
Chieftain of Nutstown  
Ch. Gulliagh Galleon  
Ch. Gulliagh Galleon

### ANNUAL CHAMPION 1985:

Ch. Chieftain of Nutstown  
Runner-up: Ch. Sorcha of Nutstown.

# NEW CHAMPION



## CH. SORCHA OF NUTSTOWN

Born: 26 November 1982

Breeders/Owners: Mr. & Mrs. J. Kelly

### PARENTS

SIRE:  
INT. CH. CARROKEEL SIR CONNELL  
OF NUTSTOWN

DAM:  
CH. SARA OF NUTSTOWN

### GRANDPARENTS

INT. CH. NUTSTOWN KING

CARROKEEL LAOIS

GWERNYFED LLEIGUS OF  
CARROKEEL

CH. NUTSTOWN QUEEN

### GREAT GRANDPARENTS

CH. BALLYKELLY ERRISLANNAN  
LIAM

CH. NUTSTOWN QUEEN

CH. & NOR CH. BALLYKELLY  
REAMONN

PERFECT PICTURE OF  
CARRICKMINES

GB. CH. FINTAN OF EAGLESCRAG

CARROKEEL ANNWYN

CH. BOROUGHBURY JUSTICE

MALATOWN LADY



# NEW CHAMPION



## CH. CHIEFTAIN OF NUTSTOWN

Born: 25 November 1983

Breeders/Owners: Mr. & Mrs. J. Kelly

PARENTS	GRANDPARENTS	GREAT GRANDPARENTS
SIRE: CH. KRACKEN KAISER	INT. CH. NUTSTOWN KING	CH. BALLYKELLY ERRISLANNAN LIAM
	COOLBREAGH CAILTE	CH. NUTSTOWN QUEEN
DAM: CH. SARA OF NUTSTOWN	GWERNYFED LLEIGUS OF CARROKEEL	CH. BOROUGHBURY JUSTICE
		COOLBREAGH CIARA
	CH. NUTSTOWN QUEEN	GB. CH. FINTAN OF EAGLESCRAG
		CARROKEEL ANNWYN
		CH. BOROUGHBURY JUSTICE
		MALATOWN LADY

# NEW CHAMPION



## INT. CH. KELLYBOURNE PILOT AT BALLALYN

Born: 22 March 1980

Breeder: Mr. L. Groom

Owners: Mr. & Mrs. D. McMillan

### PARENTS

SIRE:  
INT. CH.  
ERINDALE TRISTON

DAM:  
EAGLES PRIDE OF ERIN

### GRANDPARENTS

ERINDALE O'LEARY

GB. CH. ERINDALE GRAND  
DUCHESS

GB. CH. PETASMEADE  
CHIEFTAIN OF BRABYNS

SANCTUARY TAMAR

### GREAT GRANDPARENTS

JASON OF SUNNINGDALE  
SANCTUARY LOREEN

JASON OF SUNNINGDALE  
THALIA OF BRABYNS

FECCNA OF BRABYNS  
PETASMEADE CHANT

ROSUTT DOMINICK OF EDERYN  
SANCTUARY TARA

# SHOWS IRELAND 1986

		Judges
17.3.86	Irish Kennel Club Show (All-Breed Championship) (Dublin)	
31.3.86	Combined Canine Club (All-Breed Championship) (Dublin)	Mrs. Argyle Mr. M. Daly
12.4.86	Irish Ladies Kennel Assoc. (All Breed Open Show) (Co. Dublin)	Mr. Jim Behan
19.4.86	Cork & District Canine Club (All-Breed Championship) (Cork)	Mrs. E. Beatty
3.5.86	Fermoy Canine Club (All-Breed Championship) (Co. Cork)	Mrs. M. Donaldson
17.5.86	Hibernian All Breed Dog Club (All-Breed Championship)	Mrs. Hilda Hughes
2.6.86	Munster Canine Assoc. (All-Breed Championship) (Cork)	Miss Elizabeth Murphy
7.6.86	<b>IRISH WOLFHOUND CLUB OF IRELAND BREED CHAMPIONSHIP SHOW</b> Venue: G.A.A. Grounds, Swords, Co. Dublin. Judging: 11 a.m.	Mr. J. Rösner (Germany)
14.6.86	Swords & District Canine Soc. (All-Breed Championship) (Swords, Co. Dublin)	Mr. J. G. Plunkett
22.6.86	Munster Agr. Soc. (All-Breed Championship) (Cork)	Mrs. P. O'Reilly
28.6.86	Kilkenny & District (All-Breed Championship) (Kilkenny)	Mrs. Ann Cuthbert
5.7.86	<b>IRISH WOLFHOUND CLUB OF N. IRELAND (Breed Championship)</b> (N. Ireland)	Mr. T. Horner
6.7.86	Sporting Breeds Group (Group Championship) (Dublin)	Mr. T. Agnew
12.7.86	Bray & District Canine Soc. (All Breed Championship) (Dublin)	Mr. K. Stevenson
26.7.86	Dundalk & District Canine Club (All-Breed Championship) (Dundalk)	Mr. Russell Roberts
4.8.86	Dun Laoghaire Canine Soc. (All-Breed Championship) (Monkstown, Co. Dublin)	Mr. A. Collins
17.8.86	Clonmel & District Canine Club (All-Breed Championship) (Clonmel, Co. Tipperary)	Mr. Read
19.8.86	Killarney & District (All-Breed Championship) (Killarney, Co. Kerry)	T. N. Finney
21.8.86	Limerick & District (All-Breed Championship) (Limerick)	Mr. Eccles
23.8.86	Tralee & District (All-Breed Championship) (Tralee, Co. Kerry)	Mrs. June Minns
31.8.86	Waterford & District (Waterford) (All-Breed Open Show incorporating <b>IRISH WOLFHOUND CLUB OPEN SHOW</b> )	Mr. George Pritchard
6.9.86	Drogheda & District (All-Breed Championship) (Drogheda, Co. Louth)	Miss Susan Hudson
13.9.86	Irish Beeds Soc. (Irish Native Breeds Championship) (Dublin)	Mr. Remy Erath, Switzerland
20.9.86	Carlow & District (All-Breed Championship) (Carlow)	Mrs. M.A. Finney
26.10.86	Kildare & District (All-Breed Open Show) (Co. Kildare)	Mr. Tony Killykeen-Doyle
27.10.86	All Ireland Bull Breeds Assoc. (All-Breed Championship)	Mr. Ruggles
6.12.86	Munster Canine Assoc. (All-Breed Championship) (Cork)	
26.12.86	Dublin Dog Show Soc. (All-Breed Championship) (Dublin)	

# Why Do Puppies Fade?

At a BSAVA Beecham Animal Health breeders weekend held last year Mr. J. M. Evans MRCVS told dog breeders that the loss of puppies in some kennels amounts to around 70 per cent in new born litters. He thought that if losses of puppies of this quantity could be avoided, breeders might be more inclined to cull less worthy stock.

Broadly, the "fading puppies" is applied to puppies which appear to be normal and vigorous when born, but which become less and less viable and die before they are 14 days old.

The term is not applied to puppies which die of Parvovirus Myocarditis Syndrome; these deaths tend to occur in puppies which have reared well up to at least three weeks but die very suddenly between that time and seven weeks old.

## DEHYDRATED

Fading puppies will seem to suck less ardently in the few days after birth, they become limp, chilled and flabby, their heads often swaying from side to side. The pups are likely to appear smaller than at birth as they become progressively more dehydrated. The limbs may become rigid and the pups may cry continually, to the distress of the bitch. Blood stained faeces may be passed.

It is unlikely that all the litter will be affected, or even that the same bitch will produce faders in every litter she has. It is possible that where puppies are found flattened by the bitch, clumsiness is not to blame, but the fading syndrome.

The problem is very much that of establishments where several bitches are kept and breeding operations have gone on over a number of years. It is not usual to see fading, apart from that induced by bad management, in the litters of individual pet bitches whelped in their own homes. It would therefore seem that a build up of some type of infection is likely to be the cause.

The cause of early death in puppies is termed the Fading Puppy Complex because many agencies may be involved, together or separately. Bacteria, viruses, toxoplasmosis (acquired via the kennel cat) may be to blame.

At one time Beta-haemolytic *Streptococcus* (BHS) and *E. coli* were thought to be the main causes of puppy fading and so, Mr. Evans said, researchers minds became shut to the possibility that other bacteria or viruses might be present.

## TESTED

*Brucella canis* has been an important cause of fading puppies in USA and now the first cases of brucellosis have been seen in Britain, in two Dobermanns with American ancestry.

*B. Canis* is passed from dog to bitch at mating so it makes sense that imported stock should be tested for this disease in its country of origin so that *Brucella* need not become rife in this country. Toxoplasmosis is a disease of man and most mammals; the World Health Organisation in 1974 stated that the domestic cat was the most important source of human and animal infection from this parasite, which cats acquire from the rodents they catch and eat.

The parasite breeds within the intestine of the cat, which most cats seem to tolerate well unless there is a very heavy infestation causing diarrhoea.

Since the larval stage can survive on the ground for as long as 17 months, there is ample time for the

humans and other animals to become infected by ingesting traces of cat faeces, or even eating substances such as biscuit meal which may have been soiled by cats.

The infection may be sub-clinical, giving no symptoms in adults, or varied symptoms may be shown including coughing, distressed breathing, mastitis, abortion, still-births, diarrhoea or encephalitis.

Toxoplasma have been isolated from the milk of bitches and it has been shown that puppies have been born already infected. The parasite can also live in ticks and lice.

The special signs of pups fading because of toxoplasmosis include a swollen abdomen and abdominal straining. Diagnosis is by laboratory tests.

Mr. Evans advised that cats should not be kept in breeding establishments; where Toxoplasmosis is suspected as a cause of fading, pregnant bitches should not be brought on to the premises to whelp. Those bitches due to come back on breeding terms must take up residence before they are mated to give them time to acquire some immunity.

## COLOSTRUM

Little work has been done on the duration of colostrum in the bitch, but research work has shown that calves must have colostrum within six hours of their birth, although this special type of milk is thought to be in the teats for three to four days.

Colostrum has a high level of protein and vitamins, and acts as a natural purgative for the newborn, clearing their intestines of faecal material which has accumulated during the foetal stage.

It is also through the colostrum that the new born puppy acquires antibodies to the diseases which its dam has met, so if a pup has no opportunity to ingest any colostrum the puppy is wide open to infection, such as distemper, which may be brought into the premises by visitors.

BHS, *E. coli*, *Brucella canis* may be transmitted from bitch to bitch, but this takes time and involves a colony living closely together. *E. coli* and *Brucella* are transmitted from dog to bitch. Individual puppies are likely to fade from BHS infection; *E. coli* is likely to infect the whole litter. A history of tonsillitis in the dogs may be a pointer to BHS.

Canine Infectious Hepatitis had not been isolated from fading pups but full boosting of stock seems to stop a problem emanating from this cause.

Mr. Evans said there is good reason for thinking that Canine Herpes Virus may be involved. The clues will come from the adult dogs, persistently coughing adults may result in fading puppies from CHV.

Mr. Evans said that the degree of responsibility from internal parasites was difficult to assess, but infestation by a burden of migrating *Toxocara* larvae passing through the lungs may cause pneumonia in puppies. The adult worm is present in puppy intestine and bile duct 14 days after birth.

## DIAGNOSIS

When any of these causes of fading are suspected, the veterinary surgeon must visit the premises to take swabs. They must be freshly taken before processing; refrigerated swabs are of no use.

It is likely that smears will be wanted from the prepuce of dogs and from the throat, and from the vagina of bitches. If the same organism is found at these sites in both dogs and bitches, it serves as a pointer to the cause of fading.



It is common to see white patches of dead tissue on after-births and this may give a clue to any disease present so it is wise to examine placentas before disposing of them.

It is thought that management factors are still the most critical factor in getting puppies through the first two weeks of life, and that chilling accounts for high proportion of deaths. The young puppy has little subcutaneous fat, and low reserves of glucose in the liver to produce heat.

Puppies must be dried thoroughly immediately after birth, and re-dried constantly if they should become wetted again, by subsequent births of puppies flooding the box with fluid, or from slobbering by the bitch. In wet weather the bitch should be dried before she returns to her puppies.

The ambient temperature for litters should be: First week 85 degrees F; two to four weeks, 80; four to six weeks, 75; six weeks plus, 70.

Mr. Evans does not advocate heating by means of infra-red lamps above the whelping box, but advises a closed box, to provide a kennel within a kennel.

Special attention should be paid to the possibility of temperature drop during the night, especially in domestic circumstances when central heating is programmed to cut off. An ambient temperature of 79 degrees F will produce hypothermia from the dam and its fellow members of the litter.

Such a puppy can survive if warmed up slowly, in an oven which has been warmed but is now turned off, or an airing cupboard.

## INADEQUATE

Puppies may fade because the dam is inadequate to her task. The puppies may starve where the nipples are too large for the puppies to suck effectively. This may not be easy to detect as the pups may seem to be on the teats, but they may not be able to take enough into their mouths to obtain milk. Conversely, some bitches may have teats that are too small.

Neither of these cases can be remedied and the bitches will have to be discarded from breeding. The restless bitch may not have been accustomed sufficiently to her whelping accommodation.

A continuation of the pre-whelping panting into the first few days after the puppies, are born may indicate a sub-clinical calcium deficiency, which can occur even if adequate calcium is being fed.

Eight per cent of puppies born alive will die later through trauma at birth. Other malformations which may not be detected for a few days, unless specially looked for may be cleft palate, making it impossible for the puppy to suck, or complete lack of anus or urethra.

## HYGIENE

There is much that the breed can do to ensure the health of new born litters. Mr. Evans emphasised good hygiene, reducing the weight of infection if it cannot be entirely eliminated. He advised the 'quarantine regime' for newly acquired stock and the provision of a hospital kennel for any dog suspected of infectious disease.

Whelping boxes should be discarded as often as is reasonable, ideally a new one should be used for each litter, but where the expense is too great, boxes should be rested and used in rotation.

Remember that pups are sensitive to the fumes of pine disinfectant and that an infra-red lamp will cause these fumes to rise. A chlorine based disinfectant is best.

Make the bitch comfortable so that she is encouraged to stay with her puppies; give her clean

bedding, not just a newspaper, and see the bedding is changed regularly.

Mr. Evans thinks it makes no sense to demand that 'clear' swabs must be obtained from stud dogs or bitches at mating time. A swab taken after whelping has the most chance of showing up a casual organism.

## WORMING

Worm pups and bitch at two to three weeks after whelping with Piperazine. Mr. Evans said that given our present state of knowledge the roundworm cannot be eliminated, but we can reduce the burden by picking up faeces regularly, and worming puppies weekly until eight weeks, monthly after that until one year.

Help the veterinary surgeon to help you by keeping a card index system on every bitch and a dog on the premises so that you can produce a medical history on any animal at short notice, in a concise form.

*Submitted by Bob Llewellyn*

---

*Continued from Page 11*

## Tolkavalley Iona — 3rd

### LIMIT BITCH: KRACKEN COMET — 1st

A red wheaten of feminine charm. A good shape and true movement. Good overall balance. Nice head and dark eyes. Rather out of coat on the day, but still a bitch showing promise.

### OPEN BITCH: Irish Ch. Sorcha of Nutstown — 1st Reserve Green Star

What a beautiful example of the breed, a tall majestic black bitch with a super head and furnishings. Sound and strong boned. Good shoulder, long reach of neck. Her movement was free but she did not drive and flow on the move as the Green Star winner. Good top line and arch over the loin, carried a lovely long tail. She lacked tuck-up and this rather spoilt her outline. A worthy winner of the Reserve Green Star.

*JUDGE Maggie Brooks*

---

## Owning a Wolfhound

These two page leaflets were prepared by the Club for the guidance of people buying their first puppy. They give details of feeding, exercise, etc. No breeder should be without a stock of them. They are available from:

Mrs. Hilda Hughes  
Hon. Sec.,  
Spring Farm,  
Tramore,  
Co. Waterford.

---

## ★ REMEMBER ★

The Secretary's Address:—

**Mrs. H. Hughes,  
Spring Farm,  
Tramore,  
Co. Waterford.**

Inform her of a change of address and when you have puppies for sale.

*For information re Club activities, publications, etc.,  
Contact the Club Secretary.*

# GULLIAGH IRISH



*M. Finney*

**Int. Ch. Carrokeel Coillte Merlin (Feb. '76) at 9½ years**

Merlin, now 10 years of age, is in great form and still the leader of the Gulliagh pack. During the year he was shown twice, won best Veteran Dog of both occasions and the Stud Dog Bowl for the fourth time. In 1985, another daughter, Nowell's HYDEBECK BALLYCARRIE, gained her English title, winning 4 CCs in 12 weeks.

Merlin's grandson, Ch. GULLIAGH GALLEON, Annual Champion '84, has had another highly successful year, although shown sparingly. He won a further 5 Green Stars, 3 Sporting Groups and a res. BIS. In the UK, he won his 2nd CC and 2 Res. CCs. We were delighted at Belfast when he won the Pedigree Pet Foods Special Sponsored Stakes (for champions, all breeds) — the only IW to do so in 1985, and the only Irish bred hound ever.

# WOLFHOUNDS

1985 was an exciting year for us with the emergence in the ring of several puppies by Galleon out of Merlin daughters and grand-daughters.

- The HYDEBECK litter (ex. Eng. Ch. HYDEBECK BALLYCARRIE, March '84) with H. REGINALD SNUFFSON, 4 Res. CCs and 5 BIS at 20 months, our own H. NESSA OF GULLIAGH, 2 Res. Green Stars and the Bitch Height Trophy, and H. MAJOR BRINY, H. SALLIE and H. SHANAGARRY with multiple Ch. first prizes.
- Garrett's SHEILA OF CLINTA (ex SARA OF CLINTA, April '84), 4 firsts out of 5 outings.
- Gilb's FIONN OF KNOCKBRACK (ex AINE OF KNOCKBRACK, Dec. '84), at his first appearance, 1st Puppy Sweepstakes 6 — 9 months, and 1st Junior Puppy Males at the IW Club of Canada Specialty.
- Our EDENBOROUGH EMANIA OF GULLIAGH (ex TULLYGIRVAN ROISIN, Sept. '85) and CULVERCROFT BENJAMIN OF GULLIAGH (ex CULVERCROFT ALANNA, Oct '85), are both to join Galleon and Nessa in the ring in 1986.



**Culvercroft Benjamin of Gullagh (Oct. '85) at 4 months**  
(Ch. Gullagh Galleon x Culvercroft Alanna)

*T. Finney*

## **TIM AND MARION FINNEY**

Gullagh Farm, Lecklinstown, Naul, Co. Dublin. Tel: Dublin 411988

# TOLKAVALLEY KENNELS

## IRISH WOLFHOUND AND KERRY BLUE TERRIERS

Photo: Miss E. C. Murphy



**Tolkavalley Aoibhinn**  
(Rurik of Solstand x Tolkavalley Tory)  
A Multi-1st Prize Ch. Show Winner

Photo: Miss E. C. Murphy



**Tolkavalley Ardmore (Darkie at 15 months)**  
(Tolkavalley Aran & Tolkavalley Lady Jane)  
Unbeaten as a puppy

Photo: Miss E. C. Murphy



**Tolkavalley Ardkeen ("Dusty" at 15 months)** Only beaten by her sister "Ardmore" as a puppy  
A litter is hoped for 17th March 1986 out of Tolkavalley Tory by "Ch. Gulliagh Galleon".  
"Ardmore" and "Ardkeen" are "Tory's" granddaughters.

**Miss Isobel Walton**  
**Hazel Bridg2, Knocksedan, Swords, Co. Dublin. Tel: (01) 401797**



# **TOLKAVALLEY KENNELS**

## **IRISH WOLFHOUND AND KERRY BLUE TERRIERS**



*Photo: E. C. Murphy*

**Tolkavalley Aoibhinn & Tolkavalley Tory**



*Photo: E. C. Murphy*

**Blannrí Bryn & Blannrí Aoibhinn ("Elsa")**  
(Int. Ch. Nutstown King & Tolkavalley Cara)

**Miss Isobel Walton**

**Hazel Bridge,  
Knocksedan,  
Swords,  
Co. Dublin.**

**Tel: (01) 401797**



ECM

### **CARROKEEL BEARNA-BUI DONAL (Casey) as yearling**

Casey's show career to date proves him a worthy son of illustrious dam — Ch. Brigid of Bearna-Bui



ECM

### **CARROKEEL MULLIGAN (Finn) also a yearling**

Unbeaten in his class to date, Finn was awarded the Best Head trophy at the N. Ireland Wolfhound Club Breed show.

**Owners:** Kathleen McCumisky & Maureen Millar  
61 Leitrim Road, Newry, Co. Down.  
Phone: Rathfriland 30767

# CU-ULADH IRISH WOLFHOUNDS



Carrokeel Oonagh McCoy of Cu-Uladh (at 16 months)

ECM



Cu-Uladh Carrokeel Gargan

ECM

**DICK, DOROTHY & KIM McCOY**

**Cu-Uladh Kennels**

**Ballypitmave Glenavy BT29**

**Co. Antrim, N. Ireland**

*Quality not Quantity*

# NUTSTOWN IRISH WOLFHOUNDS

Home of six healthy Champions including:

Two International Champions — King Age, 10 years; Connel, Age 7 years.

Champions: Sara, 7 years; Sorcha, 3 years; Chieftain, 2 years; and Kracken Kiaser



## CH. SARA OF NUTSTOWN

Presenting her son Ch. Chieftain of Nutstown, 6th generation of Nutstown Hounds. Chieftain is to date the youngest male to gain his title at just nineteen months. He started his show career on a high note. At 6½ months he went Best in Show at Kilkenny Championship Show under Mrs. K. Plunkett.

Best in Show — Waterford Open Show. Best in Show — Afghan Hound Open Show. 3 Groups, 5 Best of Breeds, 11 Green Stars.

Her daughter Champion Sorcha of Nutstown (Millie) also had a very successful year gaining her title Champion inside 12 months. 2 Groups, 5 Best of Breeds, 11 Green Stars. Sorcha is now the mother of 9 puppies.

This unique pair have had Best Brace at the Wolfhound Club of England Ch. Show, The Wolfhound Club of Ireland Ch. Show, Irish Breeds Ch. Show, Drogheda Ch. Show, Dundalk Ch. Show, Killarney Ch. Show, Monkstown Ch. Show and Tralee Ch. Show.

Our thanks to all the judges who made 1985 such a spectacular year for the NUTSTOWN HOUNDS.

### Breeders:

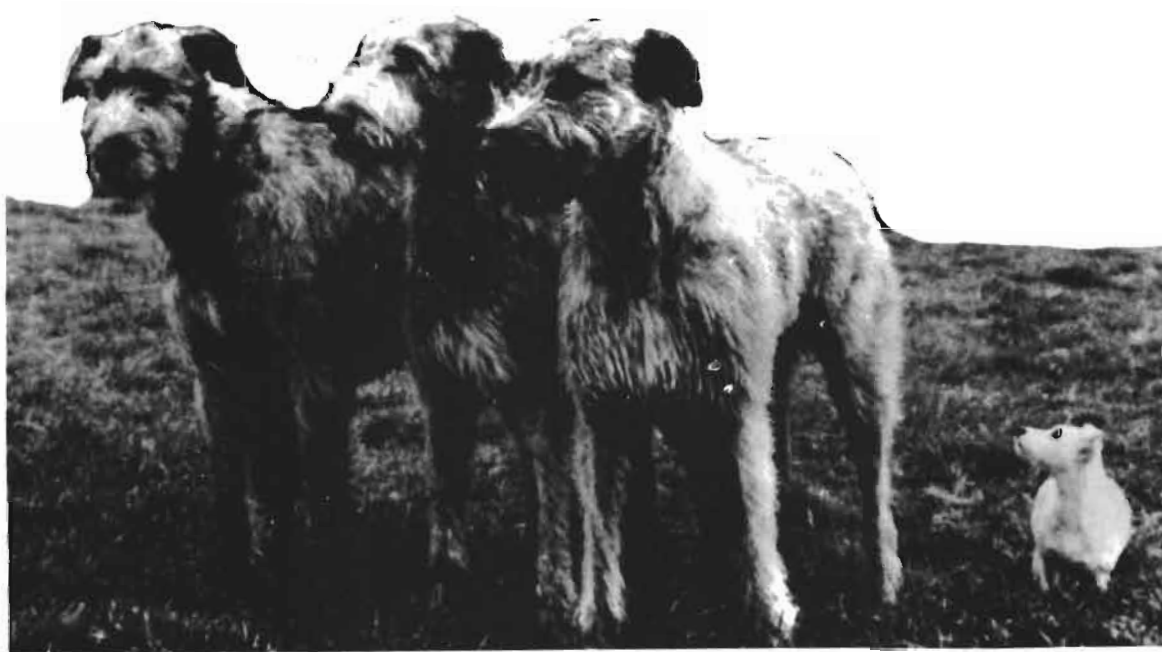
**JOHN and KATHLEEN KELLY**

Hollywood,  
Ballyboughal,  
Co. Dubin.

Phone: 433113, 437826



# knocknarea íRísh wolfhounds



Lady of Nutstown, Athcarne Nora of Knocknarea, Knocknarea Deirdre

Send Greetings to all our Friends around the world

Puppies expected in March out of Knocknarea Deirdre  
(Lady of Nutstown x Carrokeel Kalypso) by Killykeen Mars.  
(Killykeen Lomion x Killykeen Mrs. Ellis)

*Enquiries Welcome*

*Breeders:*  
**ULLI & IKA PEILER**  
The Burrow, Clooneen, Ballymote, Co. Sligo. Phone: 071-65295

# **NEWTOWN HILL IRISH WOLFHOUSES**

**Perpetuating the rare old Irish blood lines**



We wish our new 1985-86  
NEWTOWN HILL  
hound owners around the world  
success and all  
the joys of  
owning an  
Irish Wolfhound

★ VISITORS WELCOME BY APPOINTMENT ★

Direct Enquiries to:—

**MRS. J. R. BREMNER, Newtown Hill, Leixlip,  
County Kildare, Ireland.  
Tel. (01) 280-404.**

# **KEEREEN**

## **IRISH WOLFHOUNDS**



**Galtymore Pride**

Sire: G. B. Ch. Royden Finnigan. Dam: Aus. Ch. Grainne An Ban Ri

**Mike and Cath Thorpe**  
**Glendalligan, Lemybrien, Co. Waterford, Ireland.**  
**Tel: 051-91255**

# ST. LEGER ADARE, F. CH.

CH. The Isles Garrett St. Leger X CH. Colleen of Nutstown



ADARE, an unbelievably fast, powerful, and sound mover has dominated lure coursing in North America. In addition to her top U.S. ranking, ADARE won the Canadian National Lure Coursing Speciality in September 1985. Following this win, ADARE took to the show ring with equal success. She is pictured being awarded major points, and will soon finish her dual championship.

ADARE is just another good reason why we love Ireland. Many thanks to Kathleen and John Kelly, and Betty Murphy, for sending us ADARE'S mother in 1979.

**B. BERNE SMITH  
ST. LEGER**

**12010 Stoney Creek Road — Potomac — Maryland — 20854 — U.S.A.**



# BEARNA BUI IRISH WOLFHOUNDS

(Photo E. C. Murphy)



**The late Ch. Brigid of Bearna Bui  
1979-1985**

(Gwernfyed Lleigus of Carrokeel x Int. Ch. Mary of Nutstown)

(Photo: T. Finney)



**Beauty**

**Int. Ch. Mary of Nutstown (Beauty)  
at 9 years of age**

(Photo: E. C. Murphy)



**Faith**

**Carrokeel Elvin of Bearna Bui  
At 6 months of age**

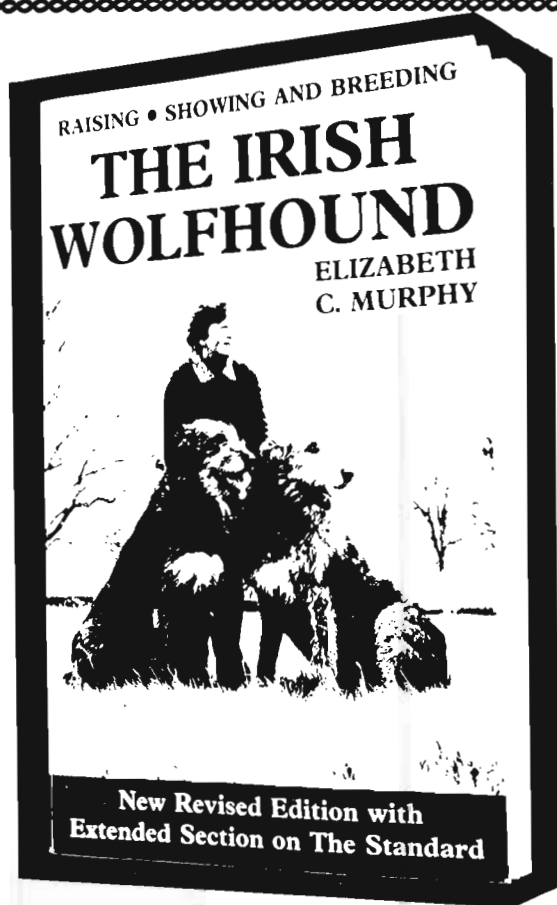
"Beauty" had a lovely year in 1985. As a nine year old at our Irish Speciality she won best veteran, Res. G.S.B. Ltd. and Best Movement trophy. The Judge was Ron Baird. At the English Centenary breed Ch. show, judge Sam Ewing, she won best veteran, Res. C.C. She had to withdraw from the movement class because it was only open to non C.C. winners.

In '84 when she was over eight years of age she attended two Ch. shows and took the C.C. each time under judges Helen Baker and John Briggs. The icing on the cake came in July '85 when under Jurgen Papenfuss at the I.W.C.N.I. she won the C.C. and BEST IN SHOW to gain her English Title and complete her Int. Championship. A unique achievement for a veteran of 9 years.

Beauty's daughter Carrokeel Elvin of Bearna Bui (Faith) has recently returned to me from Betty Murphy and with her I look forward to the future with confidence.

**Jim Behan**

145 Glassmore Park, Swords, Co. Dublin. Phone: (01) 402305



## THE IRISH WOLFHOUND

This new edition is now available  
from the author

**Elizabeth C. Murphy,**  
Ballyhagan House, Carbury,  
Co. Kildare

Price £15.00 sterling plus £1.25 P. & P.  
Airmail £4.00 extra.

U.S. \$23.00 including surface post.  
Airmail U.S. \$5.50 extra

## MOONVOY IRISH WOLFHOUNDS



Moonvoy Triona 1974-1984

*Congratulations to*  
**The Irish Wolfhound Club of Ireland**  
**Diamond Jubilee — 1925-1985**  
*and Greetings to all our Friends*  
**Moonvoy Wolfhounds, Tramore, Co. Waterford.**

**COPYRIGHT**

© IRISH WOLFHOUND CLUB OF IRELAND

All rights reserved. No part of this publication may be reproduced, recorded or photocopied without the prior permission of the Secretary of the Irish Wolfhound Club of Ireland.

Articles printed in this magazine represent the opinion of the authors and are not necessarily endorsed by the Irish Wolfhound Club of Ireland.

