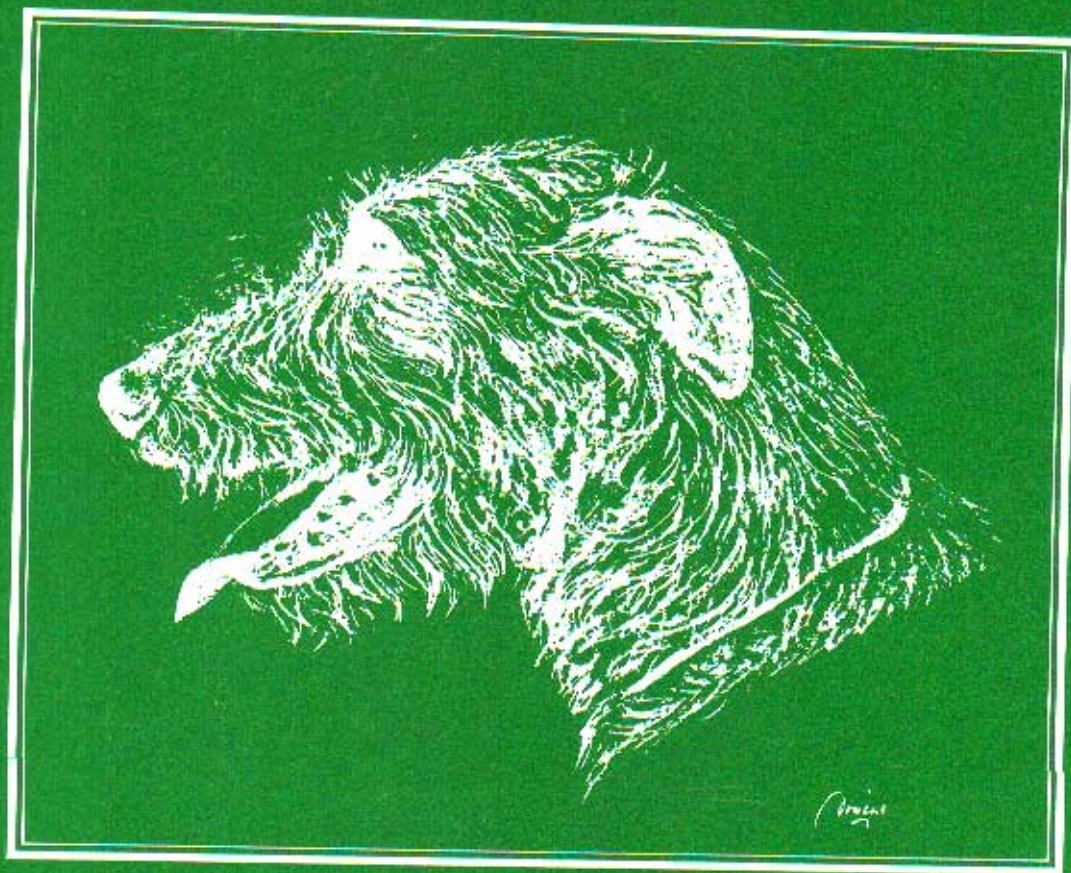


THE IRISH HOUND



**The Irish Wolfhound Club
of Ireland**

Established 1925

1987

The Irish Wolfhound

The standard of excellence and list of points in order of merit.

1. *General appearance:* The Irish Wolfhound should not be quite so heavy or massive as the Great Dane, but more so than the Deerhound, which in general type he should otherwise resemble. Of great size and

commanding appearance, very muscular, strongly though gracefully built, movements easy and active;
head and neck carried high; the tail carried with an upward sweep with a slight curve towards the extremity.

The minimum height and weight of dogs should be 31 inches and 120 pounds; of bitches, 28 inches and 90 pounds. Anything below this should be debarred from competition. Great size, including height at shoulder and proportionate length of body, is the desideratum to be aimed at, and it is desired to firmly establish a race that shall average from 32 inches to 34 inches in dogs, showing the requisite power, activity, courage and symmetry.

2. *Head:* Long, the frontal bones of the forehead very slightly raised and very little indentation between the eyes. Skull, not too broad. Muzzle, long and moderately pointed. Ears small and Greyhound-like in carriage. Bite, scissors ideal, level acceptable.
3. *Neck:* Rather long, very strong and muscular, well arched, without dewlap or loose skin about the throat.
4. *Chest:* Very deep. Breast wide.
5. *Back:* Rather long than short. Loins arched.
6. *Tail:* Long and slightly curved, of moderate thickness, and well covered with hair.
7. *Belly:* Well drawn up.
8. *Forequarters:* Shoulders muscular, giving breadth of chest, set sloping. Elbows well under, neither turned inwards nor outwards. *Leg:* Forearm muscular, and the whole leg strong and quite straight.
9. *Hindquarters:* Muscular thighs and second thigh long and strong as in the Greyhound, and hocks well let down and turning neither in nor out.
10. *Feet:* Moderately large and round, neither turned inwards nor outwards. Toes, well arched and closed. Nails, very strong and curved.
11. *Hair:* Rough and hard on body, legs and head; especially wiry and long over eyes and under jaw.
12. *Colour and markings:* The recognized colours are grey, brindle, red, black, pure white, fawn, or any colour that appears in the Deerhound.
13. *Faults:* Too light or too heavy a head, too highly arched frontal bone; large ears and hanging flat to the face; short neck; full dewlap; too narrow or too broad chest; sunken or hollow or quite straight back; bent forelegs; overbent fetlocks; twisted feet; spreading toes; too curly a tail; weak hindquarters and a general want of muscle; too short in body; pink or liver coloured eyelids; lips and nose any colour rather than black; very light eyes.

List of Points in order of Merit

1. *Typical:* The Irish Wolfhound should not be quite so heavy or massive as the Great Dane, but more so than the Deerhound, which in general type he should otherwise resemble.
2. Great size and commanding appearance.
3. Movements easy and active.
4. Head, long and level, carried high.
5. Forelegs, heavily boned, quite straight; elbows well-set under.
6. Thighs long and muscular; second thighs, well muscled, stifles nicely bent.
7. Coat, rough and hard, especially wiry and long over the eyes and under jaw.
8. Body, long, well ribbed up, with ribs well sprung, and great breadth across thighs.
9. Loins arched, belly well drawn up.
10. Ears, small, with greyhound-like carriage.
11. Feet, moderately large and round; toes close, well arched.
12. Neck, long, well arched and very strong.
13. Chest, very deep, moderately broad.
14. Shoulders, muscular, set sloping.
15. Tail, long and slightly curved.
16. Eyes, dark.

Note: The above in no way alters the 'Standard of Excellence' which must in all cases be rigidly adhered to; they simply give the various points in order of merit. If in any case they appear at variance with Standard of Excellence it is the latter which is correct.

COPYRIGHT © IRISH WOLFHOUND CLUB OF IRELAND

All rights reserved. No part of this publication may be reproduced, recorded or photocopied without the prior permission of the Secretary of the Irish Wolfhound Club of Ireland. Articles printed in this magazine represent the opinion of the authors and are not necessarily endorsed by the Irish Wolfhound Club of Ireland.

CONTENTS

	<i>Page</i>
The President's Page	2
In Memoriam	3
Annual General Meeting 1987	4
Profile	6
New Champion	7
Green Star Winners 1987	8
1987 Club Championship Show	10
1987 Club Open Show	16
Dundalk & District Championship Show	17
Clonmel Championship Show	18
Registrations 1986-87	19
White Tip, The Fox	20
Longevity	21
Legal Allusions	22
Letters to the Editor	23
Advertisements	24-36

The Club Wish to Thank **GO DOG**

(THE COMPLETE DOG FOOD)

*For kindly sponsoring
our breed Ch. Show*

1986/87 Officers & Committee

<i>President:</i>	Miss E. C. Murphy
<i>Vice-Presidents:</i>	Miss S. Rathbone-Scott and Miss I. Walton
<i>Chairman:</i>	Mr. J. Behan
<i>Hon Treasurer:</i>	Mr. T. Finney
<i>Hon Secretary:</i>	Mrs. H. Hughes
<i>Committee:</i>	Mrs. K. Kelly, Mr. K. Mernagh, Mr. W. Clarke, Mr. T. Redmond, Mr. G. Pritchard, Mr. S. Buggle.

Magazine Committee

Editor: J. Behan
Proof Reader: T. N. Finney
Layout & Design: Mary Hughes
Committee: G. Pritchard, W. Clarke, E. C. Murphy.
Correspondence to:
 The Editor, 145 Glasmore Park, Swords,
 Co. Dublin, Ireland.

EDITORIAL

Each year we are finding it increasingly difficult to provide the finance for our Magazine. A number of suggestions have been made on ways to improve our financial position: to charge a fee, to produce a less expensive magazine or to increase the subscription. I am in favour of the last suggestion, because it would facilitate distribution and all members would continue to receive their copy as before. It would be a pity to lower the quality of our magazine. You will see on page 21 that we are publishing some puppy Registrations this year. These are for 1986/1987. They are from members personal records, not from the Official Records of the Irish Kennel Club Ltd. All our Irish Breeder members have been requested to submit details of their Registrations for 1986/1987, and this has been the response.

It is hoped that in time we will encourage all members to furnish their registrations for this important addition to our magazine. It would be ideal if the Irish Kennel Club Ltd., provided this service but until we can persuade them to do so, we will have to depend on the good will of our members to supply the information.

There were 162 puppies registered with the I.K.C. Ltd. in 1986 and 110 for 1987, we received details of 53 for 1986, and 40 for 1987.

My sincere thanks to everyone who contributed to this years edition.

JIM BEHAN

The President's Page

A review of a Successful Breeding Programme — Nendrum.

Miss Twyman, our much missed late President, constantly exhorted members not to breed too many puppies. She would have been pleased with the recent Irish Kennel Club figures which show a gradual decline in Irish Wolfhound registrations over the past five years — 110 in 1987, almost half the 1985 figure of 213.

Miss Twyman's sound advice was based on successful experience. It is important to note that she was not just appealing to newer breeders to restrict their breeding until they had adequate knowledge of the strengths and weaknesses of the lines they were using, but to all serious breeders. At every AGM she pleaded with all members not to breed too many puppies — and she practised what she preached. In her entire breeding career she only bred five litters, yet such was the success of her breeding programme that she has been acknowledged world-wide as one of the foremost breeders of our time.

For the benefit of newer breeders who did not have the advantage of knowing Miss Twyman, nor of having her breeding programme as a yardstick by which to evaluate their own plans, it might be worthwhile taking another look at how and why the Nendrums were so successful.

Miss Twyman's family had an Irish Wolfhound when she was growing up so she had a long-standing familiarity with the breed. She had the experience of seeing the early Eaglescrag hounds grow to maturity. Mrs. Jenkins, breeder of Eaglescrag Irish Wolfhounds, is Miss Twyman's sister. Furthermore Twymie, as she like to be known among her friends, was a veterinary surgeon professionally trained to know a well-made and sound animal and how to rear them correctly. She therefore had a very good knowledge BEFORE she got her first puppy. For most people it is their first hound which awakens their interest in the standard of excellence. Thereafter, training one's eye to assess a good hound is often unconsciously biased in favour of one's own favourite hound and the lines from which he or she comes.

People use the term "kennel-blind" (always about someone else) in a rather derisory fashion, but over the years I have come to realise that it is a very human and therefore understandable trait, present to a greater or lesser extent in us all. As we watch our first hound, who is naturally very dear to us, grow to maturity we unconsciously perceive him or her as the norm — just as we accept people like ourselves as the norm and others as foreign.

Sure, we know our hound has faults but they are familiar and easy to live with when compared with the all too visible faults we see in other people's hounds. It is fortunate that we have a Standard of Excellence against which our hounds may be judged rather than having to judge them against each other. In the same way, people who have been breeding for a few generations, while

certainly not claiming that their hounds are perfect, nevertheless, find the familiar faults in their own line much more easy to handle, or breed out ("I can breed that out in one generation") and therefore more excusable than the all too obvious faults in other breeders' lines. I do not wish to defend "kennel-blindness" but to explain it because this is one reason why newcomers may get conflicting advice as they seek to learn more about the breed.

Twymie got her first puppy from Mrs. Jenkins in the 1950's. Carol of Eaglescrag became both an Irish and an English champion. Carol's dam was Kilfenora of Ouborough who carried Boroughbury lines. The Ouboroughs and Boroughburys were among the very best English lines with a long history of successful breeding behind them. Carol's sire was Eng. Ch. Rory of Kihone. Due to the very limited amount of breeding possible in England available. To rectify this two American bred hounds were brought over from America, Rory was one of these.

Carol was not bred until she was three years of age, this allowed Twymie time to see how Carol, and some of her litter-mates who remained in England, matured. It also allowed time to learn more about the sire's genotype by seeing how he produced with other related lines.



Int. Ch. Colin Nedrum.

Bred to Miss Seale's renowned Irish & English Champion McGilligan of Ballykelly, Carol produced Irish Ch. Carna of Nendrum and two Irish and English champions, Captain and Colin of Nendrum. Colin took three Best in Shows at All Breed shows between Ireland and England.

Carol was bred again for the second, and last time, two and a half years later (Twymie advised that two litters were enough for any bitch). This time-span meant that Twymie could assess the first litter as adults, this knowledge being invaluable in planning Carol's second litter. English Ch. Sulhamstead Max was the sire of the second litter and again this combination proved very successful and had a profound effect on all future Irish lines through Ch. Connel of Nendrum. The climax of Connel's career, both for himself and for his owner Dr. May, was going best in show at the St. Patrick's Day Show 1965. This litter also produced English Ch. Eaglescrag Clonroe of Nendrum, also a Best in Show winner in England and acknowledged to have had a beneficial effect on many English lines.

Clonroe's great strength was his lovely topline which he usually passed on to his offspring. From this litter Twymie kept the lovely Ch. Corrie of Nendrum. In spite of her outstanding show record, Miss Twyman did not show very frequently and I well remember the first time I saw Corrie at a show in Cork. Such was the impression she made on me as she moved around the ring that the scene is like a video in my mind which automatically re-runs whenever I think of Corrie. How I wish we had videos of hounds like Corrie and more recently English & Irish Champion Tullygirvan Betsy Caolan so that newer breeders could get a picture in their mind of a really good hound. We were lucky enough to have had three outstanding hounds in the ring for many years, Irish and English champions Nutstown King, Carrokeel Coillte Merlin and Mary of Nutstown, each of whom seemed to get better with advancing years. Familiarity with such outstanding hounds encourages breeders, with the good of the breed at heart, to strive to upgrade their breeding to this high standard rather than satisfying themselves with second best.

In the fullness of time, Ch. Corrie of Nendrum was bred twice. Her first litter was by Eng. Ch. Sanctuary Brave Knight. This litter produced a Dutch Champion, and U.S. Champion and a U.S. & Canadian Champion as well as Irish Champion Ardgour of Nendrum.

In 1974, Carrokeel Karen, who carried mainly Nendrum, Eaglescrag and Boroughbury lines, went to Twymie. Karen was bred just once to Eaglescrag Toby. Two of these puppies, Minerva of Nendrum and Carrokeel Moonbeam of Nendrum, stayed in Ireland and became part of the Tullygirvan, Athcarne, Carrokeel and Bearnabui line. Minerva stayed with Twymie but was not shown or bred.

Show-ring success, even when as spectacular as the foregoing, is just the icing on the cake. The real measure of good breeding is (a). their success when owned and handled by other people and (b). the extent to which the line is in demand by established breeders at home and abroad who are ever on the lookout for lines which will strengthen and broaden their own lines. The Nendrums were extremely successful on both counts.

Miss Kerr Donnan made her Captain of Nendrum into an Irish and English champion. Ardgour of Nendrum was Tim Finney's first hound and he had no trouble bringing Ardgour to championship and beyond. Dr. R. J. May, who had a fifty years association with the breed, though he bred relatively few litters in that time, freely admitted that his win with Connel of Nendrum on St. Patrick's Day 1965 was the Climax of his career in Irish Wolfhounds. The story was the same with hounds that went to Europe and America.

The show-ring success of the Nendrums is of interest mainly because it reflects the outstanding contribution they made to the quality of the breed worldwide. Whenever and wherever they were used, the Nendrums strengthened many of the established top breeding lines and they helped form a strong basis for many of the

new lines which had their beginnings in the 1950's and the 1960's. It was their success as breeding stock at home and abroad which earned the Nendrums their world renowned reputation.

What made the Nendrums great was the careful planning that went into each litter. Twymie did not assess any hound on his phenotype (physical appearance) only. She learned as much as possible about his genotype (the genes he was carrying) by studying his litter-mates and related lines. She did not breed a bitch second time until she saw how the previous litter had matured. Twymie always advised studying closely the hounds in the pedigree as well as the hound himself. Her slow and cautious approach allowed her time to acquire optimum genetical knowledge of the hounds she was using. By planning carefully to upgrade each litter she bred, Twymie increased the frequency of the desirable genes or qualities in her hounds. This made her hounds prepotent, i.e. having stronger power of transmitting hereditary qualities, for type and soundness.

By following this carefully planned breeding programme of excellence, Miss Twyman avoided littering the market with Wolfhounds that were less than excellent. It is the number of puppies bred that are average or thereabouts that pull down the over-all quality of the gene-pool of the breed as a whole.

Sheer chance can produce one or two good ones out of five but the good breeder aims to produce five good ones out of five. Keep **small** keep **good**. Breeders who follow these two pieces of advice, often quoted by my late father (who was a stockman), will find their path to success surprisingly short.

ELIZABETH C. MURPHY

In Memoriam Elsie James

I was very sorry to hear of the passing of Elsie James, she was honourable and kind and was the best example of everything an Irish Wolfhound owner should be.

I am feeling her loss so very much, and still can't believe she has gone. I was very fortunate in knowing her and she was always a great help to me when I first met her and her beautiful hounds, I fell for her Int. Ch. Mulligan of Boroughbury.

Elsie was a great sportswoman, I will miss her very much.

SHEELAGH SEALE

Minutes of A.G.M.

15th November, 1987

The Chairman opened the meeting with condolences to our President, Miss Murphy, on the death of her mother. He called for a minutes silence for Mr. Plunkett, the Chairman of the Irish Kennel Club, and Mrs. James who had died during the year, also for the victims of the Enniskillen bombing. He specially thanked the outgoing Committee for their assistance during the year.

PRESIDENT'S ADDRESS

In view of the circumstances, she asked that we forego this.

SCRUTINEERS

These were appointed as follows:

Miss G. Fottrell

Mrs. M. McKenna

A special welcome was accorded to Laura Wagner visiting us from South Africa.

The Minutes of the previous meeting were read. Miss Murphy proposed acceptance, Mr. Pritchard seconded, the minutes were accepted.

MATTERS ARISING

The Secretary announced that the idea of the State sponsored dog-breeding careers, discussed at the previous A.G.M. had been squashed.

It was decided to carry on putting the Secretary's name in the Breeders List on behalf of the Club and also to continue putting adverts in the papers re. purchase of Wolfhound pups by contacting the Club before purchasing.

Mr. Peiler suggested that Breeders should give back, say £20 to defray the cost of same.

BONE MEAL

It was stated that there was no difference in Gouldings Bone Meal only the price. This was discussed and it was pointed out that there had been a change in product manufacture. Mr. Kelly reported that Miss Seale had found it difficult to feed her dogs and that he had been supplying food for years. Miss Murphy reported that the £700 raised by the Club the previous year has been used to pay fuel, food and a few necessary items for Sheelagh. This money was now almost gone. Mrs. Kathleen Kelly offered to have an evening at her home in February to raise more money. There was a discussion about feeding the dogs and it was decided later to leave this to the in-coming committee.

TREASURER'S REPORT

The Treasurer explained the accounts and pointed out that the financial position was very bad and we were in fact unable to finance the magazine.

Mr. Lowth suggested that we did not publicise the Auction

enough. It was suggested that a slip should be put in the schedule asking for advertising.

Mr. Behan proposed congratulations on the accounts and acceptance of same, and Miss Murphy seconded. The accounts were accepted.

SECRETARY'S REPORT

She said that once more she would like to thank the Officers and the Committee for their assistance during the year.

During the year, we have had 29 new Associate Members and 6 Full Members. At this point she would remind everyone if they wish to have full voting rights, they must apply for Full Membership after at least TWO YEARS.

There had been a reasonable demand for back numbers of the Magazine and we hope that we will get lots of interesting items to keep up the standard. She understood that the deadline for the next Magazine was 26th December. So get out pen and paper

As she had been unable to attend the Club Show, she was unable to report on it, but this will be done later.

The Open Show was successful, the weather was perfect, the entries were down unfortunately. 29 dogs were entered. Mrs. C. Abbott, our judge, did an excellent job and Mrs. Rathbone-Scott, who kindly agreed to steward, kept things moving, including the ringside chairs! We would like to thank both of them. The Twyman Memorial Bowl was won by Mr. & Mrs. T. Finney with Culvercroft Benjamin of Gulligh, the Moonvoy Cup for Reserve Best of Breed was won by Mrs. Gover's Owenmore Cinnuith, the Ballyvalla Tray was won by Longstown Summer Glow, owned by me and handled by Mr. Behan.

There have been a few enquiries for pups and she had done her best to pass these on to breeders who had advised her that they had pups available. Once more she asked for breeders to let her know when they had pups available.

She stated that she had been very heartened by two enquiries, they had asked for all the pros and cons of the breed and all possible details as to the best way to look after them.

She had sent out several Puppy Leaflets to help probable buyers. During the year, we received notice from the executors of the estate of Miss Deane-Morgan in the U.K. to the effect that she had left the Club a Silver Cup and arrangements have been made to collect same.

There have been several Lure-coursing meetings during the year and we would like to thank Mr. & Mrs. Finney, Mr. & Mrs. Buggle, Mr. & Mrs. Wilcox and Miss Murphy. These were enjoyed by all who were present and we hope there will be more in the coming year. The Committee decided, in view of the fact that the last A.G.M. went on so long, that nothing should be brought up unless previously dealt with by the Committee. This, of course, does not apply to No. 10 on the Agenda — general discussion.

In closing, she said she would like to ask all breeders to

remember they should be breeding for the betterment of the breed and not just for financial gain. She particularly asked owners of stud dogs to be very careful in the choice of the bitches they serve.

The I.K.C. report 110 dogs registered during the year. Just one more point, would all the members who post their ballot papers to her be sure to print "BALLOT PAPER" at the top left hand of the envelope. It is very difficult to decide whether to open the unmarked letters, some of these may require immediate attention.

CLUB SHOWS

It was announced that the venue would be changed, Mr. Pritchard and Mr. Buggle had suggested alternative venues. Mr. Pritchard gave details of a venue near Blessington. There would be no cost for the ground and an evening meal could be provided at the end of the Show, cost approx. £10. We might possibly have to pay, if, due to the weather, we had to use indoor accommodation.

Mr. Buggle reported that Kilkee Castle (1 hour from Dublin) would not be available for 1988.

Our judge for the Championship Show would be Mrs. C. Boissevain from Wales, her prefix being "Branwen".

The Championship Show would be the first Saturday in June. The Open Show would again be in conjunction with the Waterford & District Canine Club Open Show on the last Sunday in August.

RESCUE FUND

Mr. Redmond reported the Rescue Fund in a healthy position financially £80 in the Bank and £300 in the Club Funds — approx. £400.

He gave a resumé of the beginning of the Rescue Fund run by a dedicated few. He asked for a register of possible homes, the dogs were mostly grown dogs and he asked members to get really involved and to try to find possible homes. He stated that at the moment 2 dogs and 1 bitch were needing homes and time was rather urgent.

Miss Sheelagh Seale, nomination from previous A.G.M., as first and only Hon. Life Patron was ratified.

DISCUSSION

Mr. Peiler stated that he was interested in genetics and would like to have a weekend meeting to get more information. Miss McKenna suggested a seminar. There was a discussion on dogs in pounds.

RESULT OF ELECTION

It was stated that there were 3 spoilt votes and 3 unpaid members. There was no change in the Officers.

COMMITTEE

Mr. Redmond (37); Mr. Buggle (29); Mrs. Mernagh (27); Mr. Clarke (27); Mrs. Kelly (25); Mr. Pritchard (24).

Thanks were expressed to the Scrutineers.

ANY OTHER BUSINESS

Suggestions for Fund-Raising.

Mr. Peiler suggested Wolfound Posters.

Mr. Pritchard suggested a party at his home for all members to cost £3 minimum pre Xmas.

Mr. Peiler proposed that it should be left to the incoming Committee to raise the subscription if necessary on 1st July 1988 maximum to be £1. Miss Cumisky seconded. This was passed.

The deadline for articles for the Magazine is 31st December. Suggestions were History of Cups, more advertising and critiques were essential and there should be approximately 4.

Mr. Lowth suggested that we should sell Magazines through Book Shops, the current stock was approximately 500.

REGISTRATIONS

Until we can sort out troubles, we will go ahead with what our members have supplied — 1986/1987 puppies born. Mr. Behan said we had done all we can do to obtain details from I.K.C.

Miss Murphy asked for details of dogs of 9 years and over. Mrs. Kelly said she would have a get-together after Christmas similar to Mr. Pritchard's for Miss Seale.

It was suggested we should have more meetings. Poor entries at Shows were discussed, all entries in Open Classes and no young dogs being given a chance of competition in lower classes.

There was a discussion on why members at Shows were going down. No satisfactory conclusion.



Submitted by Miss L. Butler.

Profile

Mrs. Elsie James (*Boroughbury Irish Wolfhounds*)

It was with great sadness that we heard news of the death of Mrs. Elsie James whose Boroughbury Hounds were renowned worldwide.

A native of Tralee, Co. Kerry, Mrs. James lived most of her life in England. She started breeding in the war years with Clonboy of Ouborough. Mrs. Nagle, in Alma Starbuck's "The Complete Irish Wolfhound", tells us that Clonboy, son of Ch. Chulainn Casey, sired the best hounds during the last war. He sired Int. Ch. Artel Ballykelly Sandy, Int. Ch. Mulligan of Boroughbury, Eng. Ch. Ouborough McCarthy of Boroughbury, all bred by Mrs. James herself.

Tara of Bradfield was dam of the first Ouborough litter. Within the next few years Mrs. James added a Clonboy daughter, Casbah of Ouborough to her breeding stock and then another bitch Kevin of Ouborough arrived. Kevin is well known to pedigree enthusiasts because of her masculine name. Both Tara and Kevin bred very well with Clonboy producing many champions in the first and following generations.

The Boroughbury Champions around the world would be too numerous to mention. The most notable of the English and Irish Champions were: Ch. Mulligan of Boroughbury — sired Eng. Ch. Kerrymand of Boroughbury — sire of Eng. Ch. Rippington Rath Gelert; Ch. Ouborough MacCarthy of Boroughbury was grand sire of Int. Ch. Carol of Eaglescrag, dam and grand dam of many Nendrum champions; Eng. Ch. Eaglescrag Cooleen of Boroughbury is grand dam of some of the present day Eaglescrag hounds; Eng. Ch. Outhwaite Clodagh of Boroughbury helped form Outhwaite line and Int. Ch. Artel Ballykelly and grand sire of Int. Ch. Magilligan of Ballykelly. Ch. Ouborough Tara of Boroughbury.

Mrs. Hilary Jupp writing in "Dog World" states "Clonboy proved not only a potent sire but his progeny were good breeders too and the Boroughbury affix was soon to be seen in the pedigrees of champions of many of the top kennels in England, Ireland and the States. All the English champions born in 1944-1946 were by Clonboy or his sons or grandsons..... and in several cases ex his daughters or granddaughters. The same can be said for all but one of the English champions born in 1946-1951."

The Boroughbury line had a strong influence on many of the Irish and English top kennels of the 1950's and 1960's, especially in Ballykelly and Nendrum in Ireland and Eaglescrag, Outhwaite and many others in England.

More recently, English and U.S. Ch. Brona of Boroughbury still holds the record of top winning Irish Wolfhound Bitch of all time and her son U.S. Ch. Broughshane of Eagle is top winning Irish Wolfhound of all time with 15 Best in Shows.



Informal shot of Justice & Jolly helping themselves to apples when still youngsters.



Irish Ch. Boroughbury Justice, three times Annual Champion, and his litter sister, Irish Ch. Boroughbury Jolly, Annual Champion 1974, were from the last litter bred by Elsie James. Like Clonboy, Justice was a potent sire and his progeny were also good breeders. He sired: Int. Ch. Carrokeel Coillte Merlin, Int. Ch. Mary of Nutstown (dam of Ch. Brigid of Bearnabui), Ch. Nutstown Queen (dam of Int. Ch. Nutstown King), Ch. Carrigeen of Tolkavalley, Ch. Athcarne Shiofa (dam of Ch. Coolbreagh Athcarne Clodagh), Ch. Tolkavalley Sceoling and Eng. Ch. Sinead of Cu Uisneach and numerous overseas champions. Ch. Boroughbury Jolly was dam. of Ch. Carrokeel Slainte and two overseas champions.

Ch. Boroughbury Justice, both 1971, was the great, great, great, great, great, great grandson of Clonboy of Ouborough. Seven generations spanning nearly forty years of breeding Irish Wolfhounds of superb type and quality — this is the measure of the success of Elsie James' renowned Boroughbury Irish Wolfhounds.

E.C. MURPHY

New Champion Kracken Comet



SIRE:
Ch. Kracken
Kaiser

Int. Ch.
Nutstown
King

Ch. Ballykelly
Errislannan Liam

Ch. Nutstown
Queen

Coolbreagh
Cailte

Ch. Boroughbury
Justice
Coolbreagh
Ciara

DAM:
Doreen of
Termon

Moyglare
Brian

Fergus of
Fionn-Uisce
Grallagh

Agnes
of Termon

Ballykelly
O'Leary
Fionnula of
Ballinaboy

GREEN STAR WINNERS — 1987

Show	Judge	Green Star Winners	G.S.	Value
Irish Kennel Club	Mr. P. Hastings	Ch. Chieftain of Nutstown	BOB	8
		Princess Dhu of Nutstown		8
Cork & District	Mrs. G. Dowdall	Ch. Chieftain of Nutstown	BOB	2
		Princess Dhu of Nutstown		1
Combined Canine Club	Mrs. K. Kelly	Ballykelly To Agori Mou	BOB	9
		Collbreagh Brega		9
South Tipperary	Mr. D. Simpson	Ch. Chieftain of Nutstown	BOB	4
		Princess Dhu of Nutstown		1
Hibernian	Mr. N. White	Ch. Chieftain of Nutstown	BOB	8
		Princess Dhu of Nutstown		8
Munster Canine	Mrs. E.J. Nugent	Cillian of Knockbrack		2
		Whysper of Lainston	BOB	2
Irish Wolfhound Club of I.	Mr. F. McEvoy	Eng. Ch. Hydebeck Reginald Snuffson	BOB	10
		Owenmore Cinnuiuth		10
Swords & District	Mrs. E. Fryer	Carrokeel Mulligan		8
		Hydebeck Nessa of Gulliaigh	BOB	8
Munster Canine	Mrs. B. Beare	Ch. Chieftain of Nutstown	BOB	2
		Princess Dhu of Nutstown		1
Kilkenny	Major F.W. Jeffery	Int. Ch. Gullaigh Galleon	BOB	6
		Princess Dhu of Nutstown	6	
Sporting Breeds	Mr. B. Reynolds-Frost	Culvercroft Benjamin of Gulliaigh	BOB	6
		Athcarne Nora		6
Bray & District	Mrs. M. Holmes	Int. Ch. Gulliaigh Galleon	BOB	6
		Whysper of Lainston		5
Dundalk & District	Mrs. C. Taylor	Ch. Chieftain of Nutstown	BOB	5
		Kracken Comet		5
Dun Laoghaire Canine Society	Mr. D. Dowdall	Ch. Chieftain of Nutstown	BOB	7
		Princess Dhu of Nutstown		7
Clonmel	Mr. J. Behan	Culvercroft Benjamin of Gulliaigh	BOB	8
		Athcarne Nora		8

Killarney	Mr. B. Tyrrell	Ch. Chieftain of Nutstown	BOB	6
		Owenmore Cinnuiinth		4
Limerick	Dr. B. Raven	Int. Ch. Gulliagh Galleon	BOB	6
		Kracken Comet		4
Tralee	Mr. T. Peak	Int. Ch. Gulliagh Galleon	BOB	6
		Kracken Comet		4
Drogheda	Mr. J. Selby	Ch. Chieftain of Nutstown	BOB	9
		Hydebeck Nessa of Gullaigh		4
Irish Breeds	Mrs. M. Delmar-Hallinan	Carrokeel Mulligan		8
		Ch. Kracken Comet	BOB	8
Carlow	Mrs. A. Tomlinson	Int. Ch. Gulliagh Galleon	BOB	4
		Coolbreagh Brega		4
All Ireland Bull Breeds	Mrs. S. Marston	Int. Ch. Gulliagh Galleon	BOB	5
		Tullygirvan Bridget		4
Munster Canine	Miss E.C. Murphy	Cillian of Knockbrack		2
		Tullygirvan Bridget	BOB	2
Dublin Dog Show Society	Mr. T. N. Finney	Knocknarea Briciu		4
		Coolbreagh Brega	BOB	4

Compiled by W.V. Clarke

Best in Show Wins

Irish Wolfhound Club of Ireland: Eng Ch Hydebeck Reginald Snuffson. Sporting Breeds: Culvercroft Benjamin of Gulliagh.

Annual Champion 1987

Ch. Chieftain of Nutstown 52 points.

Runner Up: Int. Ch. Gulliagh Galleon 33 points.

The Irish Wolfdog

by

Hogan & Graham

Price £10.00 (airmail postage £1.50 extra)

Send remittance with order to:

Mr. T. Finney,
The Hon. Treasurer,
Gulliagh Farm,
Lecklinstown,
Naul,
Co. Dublin.

★ REMEMBER ★

The Secretary's Address:—

**Mrs. H. Hughes,
Spring Farm,
Tramore,
Co. Waterford.**

Inform her of a change of address and when you
have puppies for sale.

*For information re Club activities, publications, etc.,
Contact the Club Secretary.*

Irish Wolfhound Club of Ireland Critique of Championship Show, 1987.

Judge: F. McEvoy (Aust)

I must begin by thanking the Club for the great honour that it gave me in allowing me to judge their annual show. It is something very special to judge a breed in its native land, and this show will remain one of my special memories.

Next, my thanks to the Stewards, who, in the most adverse conditions, helped me through the classes and patiently explained the slightly different system that you operate in the ring.

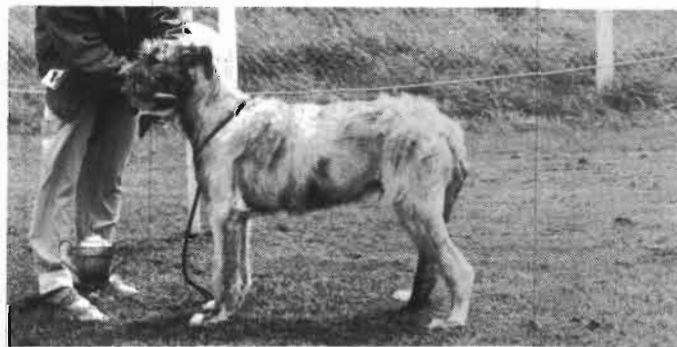
Without the charming Anne Behan, notebook in hand, you might not be reading this critique — my hands were too cold most of the time to hold a pen to make notes for myself. Thank you Anne, and I hope my Australian accent was not too difficult to follow.

Finally, I would like to thank the exhibitors, for their entries in the first place, and for the good sportsmanship with which my decisions were received.

My initial impression of the breed was somewhat surprising, given the usual comments one reads: for me, the males showed a higher quality than the bitches. The Open Dog Class was the best of the day, and most impressive it was to see that magnificent line-up on the pegs. The Green Star Dog line-up was most pleasing, with generally lovely quality, and a most satisfying sight to me. On the other hand, whilst there was a sprinkling of lovely ladies amongst the bitches, the depth of quality in comparison with the dogs was not as strong.

As a final comment, may I suggest that any dog in the ring is improved by attention to handling and presentation, and I feel that this is an area that, for some, could so easily be improved, resulting in a more relaxing and satisfying experience of the ring. Once again, my thanks to you all.

F. McEVOY



CLASS ONE: PUPPY DOG

1st: No. 146 *Hydebeck Harvard*. A quality cream brindle youngster, who only just made the age for the class. He has an attractive head, finished with lovely rose ears, and a good length of neck running into adequate shoulders. A balanced pup, with striking bone, going all the way down to his large feet, and well turned stifle. On the move, needed to strengthen behind, and general outline would have been more pleasing if his tail was carried a little lower, but he was young and a little happy.



CLASS TWO: JUNIOR DOG

1st: No. 149 *Allaid of St. Doulaghs*. The best of this group: a tall rangy dog, balanced, but not well angulated. He had a rather plain head, with disappointing ears, and did not move out at all.

2nd: No. 150 *Athcarne Murphy*. This fellow had a rather nice head and ears, and carried his topline well, especially on the move. However, he lacked the balance and bone of the winner, and fell down particularly on his very forward shoulder placement.

3rd: No. 151 *Athcarne Seamus Buggle*. Very unbalanced outline, and all over the place on the move.



CLASS THREE: NOVICE DOG

1st: No. 152 *Culvercroft Benjamin of Gulliaigh*. A big balanced grey brindle dog, of lovely houndy type. This fellow still has to fully mature, but has lots of potential: a correct, well boned front, good angulation, and length of neck flowing to a strong topline and finished with powerful quarters. He was not having the best of days on the move, however, not using his hocks, and so losing drive, and a little too happy with his tail, which rather spoilt his outline. This, I'm afraid, didn't help him in the Green Star line up.

2nd: No. 154 *Knocknarea Briciu*. A grey brindle, with a most impressive depth of chest, a rather plain head, but much added to by his lovely tight ears. Correct harsh coat, and well turned stifles, but lacking a little in bone, and not the same quality as one.

3rd: No. 153 *Ballykelly Chief*. A dog with an attractive outline, but spoilt by a rather staring eye, and a most un-typical crouching gait.



CLASS FOUR: GRADUATE DOG

1st: No. 157 *Owenmore Finn Mac Cool*. A tall grey brindle dog, of good type, without being excellent. His head was spoilt by rather large ears, and his stuffy neck and straight shoulder detracted from his over-all balance. He moved quite well, but it was disappointing to see that unsightly ring tail.

2nd: No. 159 *Cillian of Knockbrack*. This is a dog who could improve if a bit more training was employed. His attractive head was complimented by nice tight ears, and when he stood properly, showed a good houndy outline. He was, however, very narrow throughout, and did very little on the move.

3rd: No. 158 *Whyllas of Beltane*. A cream dog, but not the shape I was looking for. His head and expression were clearly affected by his poor ears, but he had a good typical coat, and moved with good reach and drive.



CLASS FIVE: LIMIT DOG.

1st: No. 164 *Westmount Xile of Mochras*. This very masculine dog had a lovely typical outline: good deep body, sweeping hindquarters, strong neck and high head carriage. To be critical, I would like a better spring of rib and a larger more refined head, and he was another one with a happy tail; however a fine hound with a strong reaching and driving movement and that crisp hard coat. For me, this is a dog with much to offer breeders.

2nd: No. 157 *Owenmore Finn Mac Cool*. See Graduate Dog.

3rd: No. 163 *Ballykelly To Agori Mou*. This dog was very like 2nd in type, but was a bit hard in head and expression, and rather soft on the topline.



CLASS SIX: OPEN DOG

1st: No. 172 *Eng. Ch. Hydebeck Reginald Snuffson*. This dark grey dog announced himself as the winner as soon as he strode into the ring. He carried himself with that presence, that commanding appearance of a real champion. He is a striking dog, with a long lean head, good ears, and a balanced outline. On the move, he strode out well, showing his correct forehand and quarters, although I would have liked him to have got his head up a little more consistently.

2nd: No. 167 Ch. *Chieftain of Nutstown*. What a lovely head, and glorious straight front on this fine masculine dog. He hasn't got the angulation or powerful hindquarters of one, and he could be a little broader throughout, but very much a typical, quality male.

3rd: No. 175 *Athcarne Oisin*. This dog has a lovely outline, which he carries well on the move, and an attractive head, not overly affected by a light eye. In comparison with one and two, however, he is a bit small, and needs more bone.

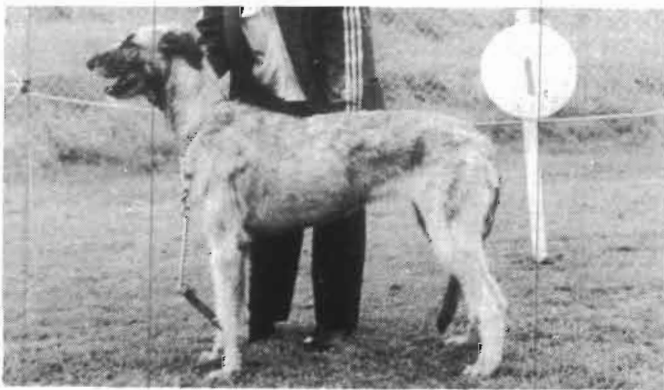
4th: No. 170 *Carrokeel Mulligan*. A balanced but rather square dog, who could be better angulated. He has a very typical and attractive head, and moves well, although another one inclined to ring his tail.



CLASS EIGHT: PUPPY BITCH

1st: No. 178 *Agathenor Fifi of Callaighstown*. Quality red youngster, lovely lines, with an attractive head and good bone. This one needs some work on her confidence in the ring.

2nd: No. 179 *Keereen Princess Morag*. A very sound bitch with lovely hind movement and a good head and ears. She has a better coat texture than one, but is very narrow in the loin and forward in the shoulder.



CLASS NINE: JUNIOR BITCH

1st: No. 188 *Tolkavalley Barna*. This very powerful red bitch pleased with her lovely alert expression, typical houndy shape, and her overall balance. Although she showed in her underclothes, this only served to highlight her outline, and she should go on to better things. Another one who needs some firm handling, but when she hit her stride, moved very sweetly, with the lissom power her shape promised.

2nd: No. 183 *Carrokeel Gwyneth of Bearna Bui*. I found this bitch rather snipey, and generally lacking the quality of one. She essentially lacked balance between her shoulders and rear end, which was most apparent on the move, when she was down in front and high over the rear.

3rd: No. 186 *Athcarne Casey Oir*. A nice head and ear carriage, and a good topline on the move, but too small for twelve months.



CLASS TEN: NOVICE BITCH

1st: No. 194 *Clonara Alia*. A big, raw-boned, rangy bitch, with a lovely neck, sweeping hindquarters, and great depth of chest. She presents a most shapely and typical picture when standing, and moves with power and drive. To be critical, I would like to see more spring of rib and particularly more width across the hindquarters.

2nd: No. 195 *Tolkavalley Belleek*. This lovely feminine bitch, sister of the winner of the previous class, was another quality youngster. She was a nicely balanced bitch, if a little forward in shoulder placement, and again, powerful on the move. Unfortunately, also a difficult girl to handle, full of life, but when she did get going, reached out and drove very well.

3rd: No. 193 *Athcarne Eadoin*. Another lovely type of bitch, with a pleasing head and expression and well set ears. She was shown a little on the heavy side, which, I think, affected her topline.



CLASS ELEVEN: GRADUATE BITCH

1st: No. 198 *Owenmore Cinnunth*. A cream bitch of lovely, type, good size, strong bone, and over-all balance. This one had a lovely head, both from the front and in profile, set on a longish, arched neck, and flowing into a strong hound topline — high on the wither, down into the back, and just the right arch over the loin. The whole picture was finished off with long sweeping thighs and lovely low hocks. A most pleasing lady, but shown with a bit too much condition to allow her to present her very best advantage.

2nd: No. 197 *Kracken Kaftan*. A more rangy and slightly taller bitch, not as well balanced in shoulders and hind-quarters as one, and a little sharpish in head and expression. I think, too, for her size, she could do with more bone.

3rd: No. 200 *Knocknarea Blathnaid*. A slighter type, with rather nice shape, and an excellent head and ears. Her strong quarters were made to move, but I'm afraid that she was slightly choppy in her action, and showed an untypical rise over the topline as she went around.



CLASS TWELVE: LIMIT BITCH

1st: No. 206 *Hydebeck Nessa of Gulliagh*. A lovely bitch, of good quality, not over-angulated, but beautifully balanced. She has a good head long neck and typical topline, but perhaps a slightly deeper chest would help give her the sweeping underline to complement her back. A very sound mover, she was. However, not particularly enthusiastic on the go.

2nd: No. 197 *Kracken Kaftan*. See previous class.

3rd: No. 208 *Princess Dhu of Nutstown*. A sturdy, well-built black bitch, but a little on the stuffy side.



CLASS THIRTEEN: OPEN BITCH

1st: No. 215 *Whysper of Lainston*. Not an over large bitch, but a lovely, poised and collected lady, especially on the move. Reasonably substantial and rather shapely, but seemed to be down on one front foot, and her ears tended to spoil her expression for me.

2nd: No. 214 *Carrokeel Clasby*. A lovely shaped and feminine bitch, but with a rather plain head which was disappointing. She was very sluggish on the move, and not as strong on the topline, or in extension as one.

3rd: No. 216 *Coolbreagh Brega*. A quality grey bitch, excellent in front and with an attractive balanced head. Rather short in loin, which noticeably cramps her rear movement.



CLASS FOURTEEN: VETERAN BITCH

1st: No. 229 *Tolkavalley Tory*. The soundest of this group, seven years old, a bit small, but holding a lovely shape.

2nd: No. 223 *Gulliagh Ballykelly Cait*. This eight year old was the best on the stack, but she couldn't hold this on the move, and so gave way to one.

3rd: No. 224 *Owenmore Aitheda*. A lovely, lively girl for her age, but not quite the type or quality of 1st or 2nd.

RES.: No. 225 *Pendomers Will o' the Wisp*. A beautiful old ten year old, and a credit to her owners. She was obviously enjoying the day out. Still holding a lovely shape.

Winners of the Brace Class, Princess Dhù of Nutstown, Ch. Chieftain of Nutstown.



Green Star Dog and Best of Breed: No. 172 — Eng. Ch. Hydebeck Reginald Snuffson.

Reserve G.S. Dog: No. 164 — Westmount Xile of Mochras.

Green Star Bitch: No. 198 — Owenmore Cinnuiuth.

Reserve G.S. Bitch: No. 206 — Hydebeck Nessa of Gulliagh.



Tullygirvan Points Trophy, Carrokeel Clasby.



Children's Parade. Judge Mrs. Mary McKenna with winner Zena Pritchard.



Carrokeel Annual Trophy for previous year's Annual Champion, Ch. Chieftain of Nutstown.



Presentation of the judge by our President.

The Irish Wolfhound Club of Ireland Open Show Waterford 30th August 1987.

I was delighted to accept an invitation from Mrs. Hilda Hughes to judge the Irish Wolfhound Club of Ireland Open Show, held in conjunction with Waterford and District Canine Club at Newtown School, Waterford.

Glorious weather added to a most memorable and friendly occasion, with the assistance of my most efficient Steward, Mrs. Sue Rathbone-Scott and Secretary, Mrs. Hilda Hughes, The day went without a hitch.

Not having been showing recently I was impressed with the overall improvement in the quality of Irish Wolfhounds and the number of new faces showing new dogs. A few younger specimens left me with a marked catalogue to follow what I consider promising careers.

BEST OF BREED & BEST DOG

This title went to Mr. & Mrs. T.N. Finney's *Culvercroft Benjamin of Gullagh*, a young dog of very good type with a nice head and expression. Long strong neck, good shoulders and well angulated hindquarters. A little 'leggy' at present but should deepen when mature. Well presented as always and was a deserving winner.

BEST BITCH & RES. B.O.B.

Mrs. L. Gover's *Owenmore Cinnuiuth*. A wheaten bitch with plenty of substance. Good dark eye and lovely head with kind expression. Good topline and deep powerful body. Moved very well in spite of the heat. Sometimes looked a little on the short side, needs to be carefully stood up.

GRADUATE DOG

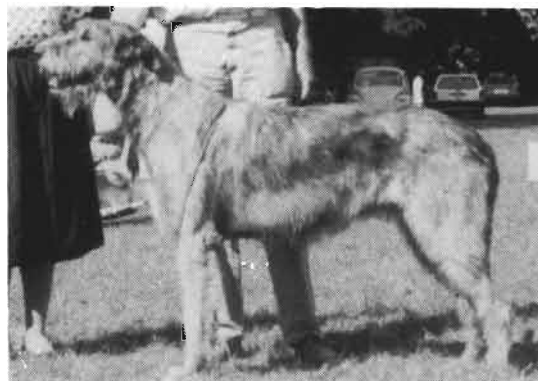
1st: Mrs. M. Commin's, *Teige of Tiobrad*, wheaten well built dog, slightly short of length but well balanced. Good mouth and head, moved a little close behind.

LIMIT DOG

1st: Mrs. C. O'Keefe's, *Cillian of Knockbrack*. 2½ years old grey dog. Dark eyes and lovely head, elegant topline. Great depth of rib and strong hindquarters. Occasionally showed true powerful movement. With more confidence and firm handling should have a very promising future.

2nd: Mrs. L. Gover's *Owenmore Finn Maccool*. Grey dog in good condition. Ears rather flat which spoiled a good head. Slightly undershot bite. Well proportioned although did not move with enthusiasm. Unfortunate to meet the winner in good form.

3rd: Mrs. M. Commin's, *Teige of Tiobrad*.



OPEN DOG

1st: Mr. & Mrs. T.N. Finney's *Culvercroft Benjamin of Gullagh*. A young grey/brindle dog, elegant and shapely combined with size and strength. Moved well and looked a winner. A very correct dog that can only improve with maturity. With more depth to his body his career must be promising.

2nd: Misses McCumisky & Millar's *Carrokeel Bearnai Bui Donal*. Wheaten/brindle dog, good head and dark eye. Strongly built with plenty of substance. Shown in hard condition thus moved very freely although a little close behind. Just lacked the curves of No. 1.

3rd: Misses McCumisky & Millar's *Carrokeel Mulligan*. Red/wheaten dog with dark eye and lovely head. Rather heavily built which makes him appear short in body. Did not move as well as No. 2.

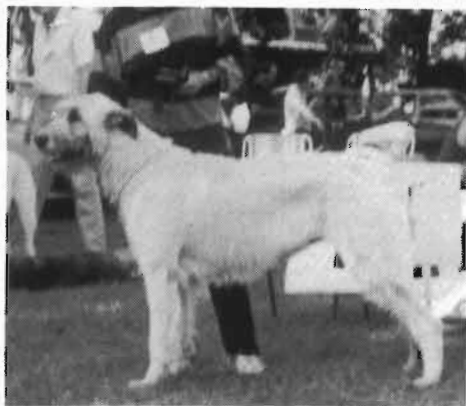
PUPPY BITCH

1st: Mrs. G. Kelly's *Sophie of Lissilan*. 7 months old grey/brindle bitch on her first outing and showing her inexperience. Otherwise, a feminine quality bitch with good head, eyes and kind expression. Shapely outline, well angulated hindquarters. For a brief moment moved very well. With experience and firm handling should have a bright future.

2nd: Mr. G. Pritchard's *Agathenor Fifi of Callaighstown*. Fawn/brindle puppy well handled and showed herself well. Good head, eyes, kind expression. Rather level topline which spoiled an overall good shape. Moved wide in front and close behind.

SPECIAL YEARLING

1st: Mrs. H. Hughes' *Trimtown Brona Beag of Moonvoy*. Grey/brindle bitch with an elegant outline, very feminine. Did not show herself to best advantage. Moved rather wide in front. With maturity and substance this young bitch has potential for improvement.



LIMIT BITCH

1st: Mrs. L. Gover's, *Owenmore Cinniuint*. See Best Bitch.

2nd: Mr. Ian Lyons & Mrs. H. Hughes' *Longstown Summer Glow*. Grey bitch of good general appearance. Nice head, eyes rather light. Did not move as well as No. 1.

OPEN BITCH

1st: Mr. & Mrs. T.N. Finney's *Whysper of Lainston*. Lovely wheaten bitch with good dark eye. Substance and shapely outline, well angulated hindquarters which could have been put to more use. Occasionally held ears flat this spoiling an attractive head. Good sound type of bitch.

2nd: Mr. S. Buggle's, *Carrokeel Clasby*. A wheaten bitch of substance, similar in type to No. 1. Good head but eyes rather light. Slightly short of body length and angulation of hind legs. Did not move as well as the winner. Overall, good sound type of bitch.

JUDGE: MRS. CATHERINE ABBOTT



Dundalk & District Championship Show

It was my privilege to Judge the Dundalk Show in July 1987, not a big entry but I myself enjoyed it and wish to thank my able young steward, Fergal O'Reilly, who stepped in at the last minute and the sporting exhibitors who supported the Ruby Show.

GRADUATE DOG

1st: Thorpe's *Keereen Magic Warlock*. Lovely shapely two year old. All the essentials, just needs time and perhaps a little more substance, moved well. Res. Green Star.

2nd: O'Keeffe's *Cillian of Knockbrack*. Typical Hound needs firm handling, moved o.k. the other 2 were absent.

OPEN DOG

1st: Kelly's *Chieftain of Nutstown*. A fine dog now at his peak, I would think, and a well known winner. Moves and shows well, super coat and condition, everything in the right place coupled with size and substance. Green Star, Best of Breed.

2nd: Cumisky & Millar's *Carrokeel Mulligan*. Fine upstanding 3 year old Wheaten true type, good head & ears, nice dark eye powerful mover, plenty of substance.

3rd: Cumisky & Millar's *Carrokeel Bearna Bui Donal*. Another fine hound (same owners), similar in type and age to 2 good hindquarters, moving very well.

4th: Reilly's *Edelmur Romulus*. A grand 9 year old gentleman who went round the ring with great enthusiasm, like a two year old. In fine fettle, a credit to his owner.

PUPPY BITCH

1st: Pritchard's *Agathenor Fifi of Callaighstown*. A lovely shapely puppy. Well presented and very much at home in the ring. Very promising, should do well.

GRADUATE BITCH

1st: Thorpe's *Keereen Madam Rowena*. Quality wheaten moving freely, lovely head and well angulated quarters, all the essentials. R.G.S.

2nd: Reilly's *Killineer Claireseac*. Typical hound moving well not the outline of 1.

OPEN BITCH

1st: Kelly's *Kracken Comet*. Mature red wheaten with nice outline, good angulation, lovely type and a good lively mover. Green Star Bitch.

2nd: Clarke's *Coolbreagh Brega*. An excellent bitch of good type, true movement and close decision. I just preferred the hindquarters of the winner.

JUDGE: CONNIE TAYLOR

Clonmel Championship Show

Judge: Jim Behan

It is always a pleasure being involved with our breed in any capacity. On this occasion I wish to thank Mr. Murphy and his committee for affording me the honour of judging at Clonmel's Silver Jubilee Show.

I was pleased with the overall standard of the hounds and was impressed with the high quality of the youngsters coming through, especially in the bitches.

The most consistent faults are still poor movement and straight fronts. Many had adequate lay-back of shoulder blade but this was too often accompanied by lack of angulation of upper arm. (A straight upper-arm can, if there is sufficient length of shoulder-blade, push the blade back into a good position.) We need to keep an eye on stifles and remember Graham's words that the Wolfhound should show a nice set of curves, beginning with the crest of the neck and finishing with the bend of the tail.

Green Star and Best of Breed went to Tim & Marion Finney's lovely young boy "Culvercroft Benjamin of Gullaigh" who was a fairly easy winner of his Green Star. Reserve to him was his Dad "Int. Ch. Gullaigh Galleon" who really looked well on the day but has not got the rear angulation of his son.

My Green Star bitch, Ulli & Ika Peiler's beautiful girl "Athcarne Nora of Knocknorea" had much stronger competition mainly from Linda Gover's very lovely young wheaten "Owenmore Cinnuiinth". Cinnuiinth just lost out to winner due to carrying too much weight which made her appear a bit short, but she is a very pleasing lady and will make her title, I feel sure.

PUPPY DOG

1st: Buggle's "Ballyblarney Carrokeel O'Ryan". A pleasing young boy with a lovely head. Ear carriage and placement beautiful. A little straight in front shortening the neck a little. Eye and expression very good. Very well boned. Strong topline. Going "leggy" just now. Movement a bit erratic but understandable at his age. Look forward to seeing him in future.

GRAD. DOG

1st: Finney's "Culvercroft Benjamin of Gullaigh". What a lovely fellow, very typey and balanced. Good head, ear and eye carried on a lovely long strong neck which flowed into a good shoulder. Correct topline, nice angle at upper arm, good depth of chest. Would like a little more breadth through stifle and hock. Good coat. Moved freely. Green Star and Best of Breed.

2nd: Thorpe's "Keereen Magic Warlock". A good head and neck leading into adequate shoulder. Topline not as good as winner. Needs more depth of chest. Movement unsettled. Good bone but did not have the overall quality of winner.

3rd: O'Keeffe's "Cillian of Knockbrack". Head good if a little

short. A strong neck and a very good shoulder. Could do with a little more length of body. Slightly cow-hocked. Very good coat. This hound continues to improve.

LIMIT DOG

1st: Gover's "Owenmore Finn Mac Cool". Nice head spoiled by fairly large flat ears. Shoulder a bit straight giving a shortish neck. Very good coat. Enough bone throughout. Disappointing on the move.

OPEN DOG

1st: Finney's "Int. Ch. Gullaigh Galleon". Showed and moved very well on the day. He has a nice head but has not got the rose ear. Good strong neck and good angulation in front. Very good topline. Nice rounded quarters and although could have better angulation behind, moved with enough drive and reach.

2nd: Kelly's "Ch. Chieftain of Nutstown". Chieftain has beautiful head carriage, very pleasing head, lovely expression, lovely clean long neck. A good body although carrying a few extra pounds around the waist. Rear end disappointing, short second thigh giving short choppy rear movement with very little drive. This is where he lost to winner.

PUPPY BITCH

1st: Pritchard's "Agathenor Fifi of Callaighstown". This lady has a sweet expression, lovely eye and nice neck. Front a little too straight. Topline quite level — not helped by high tail-set. She has beautiful hindquarters, lovely rear angulation. Moves a little wide in front at present.

JUNIOR BITCH

1st: Walton's "Tolkavalley Barna". This is a striking young bitch very strong for her age. Good head, dark eye, beautiful neck, good length with great strength. Nice shoulder and topline. Good length of body and good hindquarters — a very shapely lady indeed.

2nd: Walton's "Tolkavalley Athcarne Megan". Attractive lady with a nice head, placed nicely on a good neck. Lovely lay-back of shoulder with a very good reach in front. Good depth of chest and topline. Moves with good drive though a little close behind.

3rd: Thorpe's "Keereen Princess Morag". This girl was much better on the move than when set up — a little more work at home might help. She has a good head, eye and ear. She was loose in front. Slight dip in the back. Good hindquarters and good coat.

GRAD. BITCH

1st: Gover's "Owenmore Cinnuiinth". A lovely bitch with type and quality. Beautiful flowing lines, good head, nice shoulder and front. Good topline, lovely hindquarters very well angulated. Could do with a few pounds off especially around the middle — it made her a little stuffy and short. I have no doubt that this bitch will go all the way to her title. Res. Green Star.

2nd: Walton's "Tolkavalley Beleek". Sister of Junior winner but has not the same flowing lines. She lacked the maturity and finish of the class winner. Has a very slight mouth fault. Movement true coming and going.

3rd: Thorpe's "Keereen Madame Roweena". Quite a nice bitch, strong and well boned. Topline not good, falls away behind. Crosses over in front on the move.

OPEN BITCH

1st: Peiler's "Athcarne Nora of Knocknarea". What a beauty! Lovely type. A tall girl with outstanding quality. Head just long enough carried on a very elegant yet strong neck going into a very good shoulder. Topline strong and nicely arched. Loin and depth

of chest good. Could do with a little more angulation behind and should use her hocks more when moving. Her overall quality and type won her the Green Star.

2nd: Finney's "Whisper of Lainston". This lady has tremendous rear drive. A quality bitch. Feminine head with lovely dark eye. Good front. She lost out to 1st because she was a little too soft in condition and could do with some weight off her middle.

3rd: Hughes' "Longstown Summer Glow". Another bitch of good type. Good shoulder and topline. Very nice front. Unfortunately she did not move too well — she was crabbing. I think she does not enjoy showing.

JIM BEHAN

Registrations for 1986/1987

The following list is compiled alphabetically in order of breeders Affix/Prefix and is from breeders own records.

"Athcarne" Mr. & Mrs. T. Redmond. Athcarne O'Hagan, O'Maille, Derrortha Beg, Seamus Buggle, Murphy (dogs). Megan, Casey Oir, Cainan 11, Bogha Baisti, Baile Bui (bitches). D.O.B. 16/5/86. Sire: Chappleigh Barun x Athcarne Eadoin.

"Ballyblarney" Mr. Seamus Buggle. No litters bred in 1986/1987.

"Ballyvalla" Mr. & Mrs. L. Mernagh. No litters bred in 1986/1987.

"Bearna Bui" Mr. J. Behan. Glynn, Gawaine, Greyrebel, (dogs) Gwendolin, Gretta, Gwyneth, Genevieve of Bearna Bui (bitches) D.O.B. 24/4/1986. Sire: Inter. Ch. Gullagh Galleon x Carrokeel Elvin of Bearna Bui.

"Carrokeel" Miss E.C. Murphy. Carrokeel Pemi (bitch), McNabb, Paddy Murphy, Proinsias, Pele (dogs). D.O.B. 10/11/1986. Sire: Carrokeel Bearna Bui Donal x Carrokeel Killashranda.

Carrokeel O'Ryan (dog), O'Flynn (bitch). D.O.B. 17/10/1986. Sire: Carrokeel Bearna Bui Donal x Carrokeel Athcarne Eimar.

"Chulchoill" Mr. & Mrs. Mel Wilcox. Chulchoill Boromih, Brega, Blathnaid, Blinne, (bitches). Beinon, Barra, Broin, (dogs). D.O.B. 24/9/1987. Sire Athcarne Oisín x Orlaigh Una.

Chulchoill Annora, Ailish, Aine, Aoife, (bitches). Aidan, Abban, (dogs). D.O.B. 25/8/1987. Sire: Knocknarea Briciu x Carrokeel Neantha of Chulchoill.

"Coolbreagh" Mr. W. V. Clarke. Coolbreagh Shiofra, Blath, Gweedagh (bitches) D.O.B. 18/10/1987. Sire: Coolbreagh Moloney x Ballykelly Siofra.

"Errislannan" Miss S. Brooks. Errislannan Drimeen, Deirdre, Uisge, (bitches) Doholla, Danross, Lefroy, (dogs) D.O.B. 23/3/1987. Sire Ballykelly Doolough x Newtownhill Moonlight.

"Gogmagog" Mr. & Mrs. I. Lyons. No litters bred in 1986/1987.

"Gullagh" Mr. & Mrs. T.N. Finney. Gullagh Hana, Hecla, Hesselink, (bitches). Harvey, Hegarty, Haraidhe, Shannon (dogs). D.O.B. 21/6/1986. Sire: Inter. Ch. Gullagh Galleon x Whysper of Lainston.

"Kishavanna" Mr. B. Rickaby. Kishavanna Arkil (dog) Arila, Amelia (bitches). D.O.B. 24/3/1987. Sire: Carrokeel Kaylspo x Marshgrove Trixie's Queen.

"Kilcullen" Mrs. C. Taylor. No litters bred in 1986/1987.

"Knockbrack" Martin & Joan Timlin. Aongus, Barra (dogs) Riona, oireann, Eadaoin (bitches) of Knockbrack. D.O.B. 21/3/1986 Sire Gullagh Galleon x Aine of Knockbrack.

"Knocknarea" Uli & Ika Pieler. Knocknarea Crean, Conaire, Cailin, Cinn Oir, Cliona, Ciara, Ceol, (bitches). Ciaha, Cusheen (dogs). D.O.B. 24/3/1986. Sire: Killykeen Mars x Knocknarea Deirdre.

Knocknarea Dultach, Diarmad, Druid, Finn, Damian (dogs). Dreoilin, Damhsa, Sushila McDaid, Dian-Ra's (bitches) of Knocknarea. D.O.B. 6/9/1987. Sire: Athcarne Oisín x Lady of Nutstown.

"Lisselan" Mr. G. Kelly. Kellymore (dog), Sophie (bitch) of Lisselan. D.O.B. 20/1/1987. Inter. Ch. Gullagh Galleon x Nora of Knockbrack.

"McKynegan" Miss C. Jennings. McKyegan Caoimhe (bitch), Tadgh (dog). D.O.B. 17/3/86. Sire: Inter. Ch. Gullagh Galleon x Kiziah of Claidubh.

"Owenmore" Mrs. Linda Gover. No litters bred in 1986/1987.

"St. Doulagh's" Mrs. M. Haughey. No litters bred in 1986/1987.

"Termon" Mrs. Sean Tierney. No litters brd in 1986/1987.

"Tolkavalley" Miss I. Walton. Tolkavalley Brian, Barry, Barney (dogs). Brickeen, Beleek, Barna, (bitches). D.O.B. 18/3/86. Sire: Inter. Ch. Gullagh Galleon x Tolkavalley Tory.

Tolkavalley Achill, Ashe, Ahadue (dogs). D.O.B. 22/5/1987. Sire: Ballykelly Doolough x Tolkavalley Aoibhinn.

"Tullygirvan" Miles & Sue Rathbone-Scott. No litters bred in 1986/1987.

“White Tip” the Fox and “Cáilin” the Wolfhound

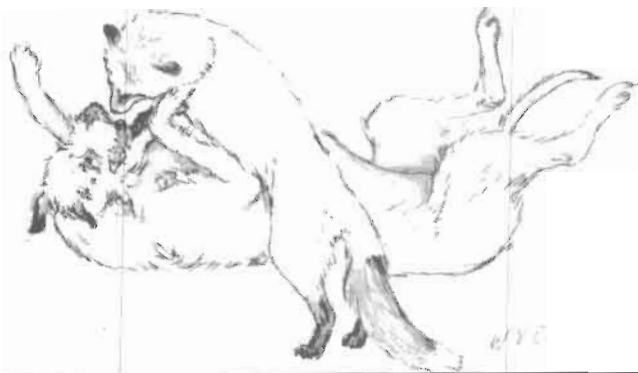
BY MARY PRICE, *Tobergregan, Garristown,
Co. Dublin. Tel: 01-354370.*

Today as I write, its almost 3 weeks since we have seen White Tip. I'm writing near a window from which I have a beautiful view of the countryside and I wonder if he is surviving out there somewhere. Back in June my husband Brendan a Zoo Keeper announced he was bringing home a very young fox. I wasn't very happy I must admit.

Days before its arrival I was told stories of how people had tried to keep foxes and the havoc they caused, eating their way through floor boards and out through roofs trying to escape, so I wondered how on earth we were going to keep this little fellow. We built a run approximately 22' x 9' in which we put an old wine barrel full of hay covered with branches, we sealed the edges with blocks making it nearly impossible for him to escape. The height of the run was approx. 10'.

When he arrived he was very friendly. He had been reared by children in a housing estate and they could no longer keep him. I fell for him straight away and remembered when I was a child, my father used to take us to the back fields in the evenings and we'd watch the young cubs playing, at a long distance of course. I always wanted to touch their wonderful red coats from that time. He was in wonderful condition, his coat was perfect. He was also very playful being only 2½ months.

For 3 months he lived in the run. I watched for hours from the kitchen window and in all that time he never made one attempt to get out. We fed him on milk, bread, dog food, rats, pheasants, and rabbits, the latter when they got killed on the roads. He thrived and then the sad day came when White Tip had to make it on his own in the “wild”. We let him out one evening in September and at first he was reluctant to leave. He returned every day to play with our springer spaniel Trustee, and grab little bits of food from his and the cat's dishes. He was growing into a glorious dog fox with a magnificent red coat and an immaculate white tip to his tail. They are a beautiful animal and a real joy to watch.



Illustrations by W.V. Clarke

Then from the Kennels of Ika and Ulli Peiler came a sweet seven month old Wolfhound Cáilin. White Tip loved to play games with the Springer Spaniel rolling and tumbling, but a wolfhound I couldn't imagine. We kept the wolfhound indoors for the first few days and only let her out on a lead. White Tip watched her very curiously from a distance, true to reputation, “clever as a fox” at the start. As time passed he came closer and closer. We didn't want Cáilin to harm him so we were very cautious also.

Eventually we let the wolfhound off the lead and chase him knowing she could never fit in the places he could. We had no worries Cáilin and White Tip became the best of friends in no time. It was truly a magnificent sight to see Cáilin rolling over with her big long legs in the air and White Tip on her chest playing happily away. From then on Cáilin searched out White Tip to play, but White Tip always tired first.

White Tip's visits became more and more irregular maybe with a space of 2 or 3 days at a time but never more than 3. Cáilin always welcomed him back and they would play for maybe 2 to 3 hrs. It was great exercise for Cáilin as she was only a pup and White Tip loved it. The only time play would stop was at feeding time. The fox no longer being fed by us, but feeding in the “wild”, would occasionally, try and steal from Cáilin's dish. Cáilin would resent this greatly and chase him away without any real aggression. As soon as feeding finished however, play would resume. Could it be that White Tip's presence stimulated Cáilin's appetite as on the occasions the little poacher was about Cáilin seemed to eat with greater than normal relish? This could only have been of benefit to her, in her puppyhood days as feeding is so important to her great growing bones. Another “Bone” of friendly contention was Cáilin's plentiful supply of Bones which White Tip would raid for want of a chase ad Cáilin would duly oblige.

When I took the dogs walking in the nearby fields White Tip would usually follow. On this occasion there was no sign of White Tip for a few days but as we were walking near a farm yard out ran White Tip with two Jack Russell terriers hot on his tail. On sight Cáilin ran to rescue White Tip with great vigour. The Jack Russell terriers ran for their lives and White Tip ran off to play with Cáilin life was back to normal very soon. During his visits back he killed four hens but as my husband remarked, “who couldn't spare a few hens to give this wonderful wild creature a chance to make it in “the wild”?”

As I said at the start its now 3 weeks since we last saw White Tip, Cáilin has resorted to playing with the springer but its not the same, the fox was a lot smaller but better at play. To watch a wolfhound and fox playing is truly a magnificent thing, Cáilin still seeks him out each day and maybe one day he will return. If I never see him again he fulfilled one of my childhood ambitions to handle a fox. I'm quite sure Cáilin misses her furry fox friend.

Could it possible be that the “ancient” breed of Wolfhound, more easily relates to its wild relative, more so than other breeds as



LONGEVITY IN IRISH WOLFHOUSES

9 Years or Over

Gloreen 18/3/1966 — 8/9/1977

Sire: Daheen of Fionn-Uisce x Noinin na Sleibhte

Fenian of Tolkavalley 28/4/1972 — 6/1982

Sire: Aran of Nendrum x Tullyhunco Corrib

Tullyhunco Corrib 15/2/1970 — 18/3/1980

Sire: Ballykelly Inis x Niamh of St. Doulagh

Ballykelly Muire 4/12/1977 — 6/1987

Elpyk Balbriggan x Gulliagh Falcarragh

Tolkavalley Lady Jane 7/10/1978 still alive

Inter Ch. Nutstown King x Eorna of Tolkavalley

Carrokeel Rathdrum 4/11/1976 — 3/87

Sire: Ch. Boroughbury Justice x Marshall

Carrokeel Tolkavalley Slane 15/2/1975 to 7/1/1987

Sire: Ch. Boroughbury Justice x Tullyhunco Corrib

Tolkavalley Dun Abah 9/11/1978 still alive

Inter Ch. Carrokeel Coillte Merlin x Roshin Dubh of Tolkavalley

Ballykelly Siophra 15/5/1979 still alive

Carrokeel Coolbreagh Mac Eoin x Deirdre of Knockanaffrin

Grainne of Cartrontroy 28/8/1970 — 11/1981

Aran of Nendrum x Rose of Ballydesmond

Ch. Keltic Carragan 14/4/1976 — 10/5/1986

Ch. Wild Isle Warlock x Keltic Siobhan

Ch. Keltic Dathchaoin 14/4/1976 still alive

Keltic Orfhlaith 14/4/1976 still alive

Keltic Killadoon 14/4/1976 still alive

As Keltic Carragan

Aonvarr of Mount Patrick 6/6/1966 — 29/10/1975

Ballykelly Sheehan x Ballykelly Gweevagh

neither our Springer Spaniel or Old English Sheep Dog ever showed the same interest in the fox, nor have they replaced him in Cáilins affections.

Certainly with the growing need for conservation measures, Cáilín, traditionally a hunting breed, and White Tip traditionally one of the hunted, have proved in the absence of necessity that there was no absolute need to be enemies. A tale of two canines with a lesson for us all?

Aishling of Mount Patrick 6/6/1966 — 8/6/1975

Ballykelly Sheehan x Ballykelly Gweevagh

Cailín Mean Oiche 1/6/1970 — 30/9/1979

Killykeen Torram x Aonvarr of Mount Patrick

Moonvoy Triona 15/6/1974 — 17/3/1984

Carrokeel Sclan 1/12/1977 still alive

Inter. Ch. Carrokeel Coillte Merlin x Gael

Carrokeel Scot 1/12/1977 — 10/12/1987

As Carrokeel Sclan

Carrokeel Taisce 2/2/1978 still alive

Gwernfyed Lleigus of Carrokeel x Carrokeel Anyn

Tolkavalley Oona Dubh 1/11/1978 still alive

Petasmade Tyrone x Tolkavalley Deirdre

Gulliagh Tolkavalley Doreen 9/11/1978 still alive

Inter Ch. Nutstown King x Tolkavalley Roshin Dubh

Carrokeel Sir Connel of Nutstown 15/4/1979 — 12/1987

Inter Ch. Nutstown King x Carrokeel Laois

Pendomer's Willo' the Wisp 7/10/1977 — 8/12/1987

Pendomer's Son of Damien x Pendomers Willow

Deboragh of Moll Mackie 7/7/1977 — 7/1986

Inter Ch. Erindale Triston x Ch. Aoifa of Moll Mackie

Ballykelly Maigh 4/12/1977 — 12/1976

Elpyke Balbriggan x Gulliagh Falcarragh

RESEARCHED AND COMPILED BY ISOBEL WALTON

Please when making up a pedigree, give yourself, for hounds 10 years and over a Gold Star, for 9 years and over a Silver Star and for 8 years and over a Bronze Star.

Pedigrees should after a while be very interesting to read for longevity.

Legal Allusions

(Taken from "The Dogs of Ireland" published by Dundalgan Press)

Submitted by Jim Behan

No other legal system contains as many regulations dealing with our four-footed hero as the Ancient Brehon Laws. Sometimes these appear involved and out-of-date, but often we feel that a re-enactment of some of these old Irish codes would be welcomed by the dog fanciers of to-day. The Brehon Laws, some of which date from the time of St. Patrick (fourth century), were well suited to the manners and requirements of this island, so much so that they remained in force until the seventeenth century, when the race of Brehon judges became extinct and English law replaced the colourful code of Ancient Erin.

Although English law was introduced in the reign of Henry II in the twelfth century, its authority remained purely theoretical and scarcely prevailed beyond the narrow limits of the English Pale. Aware that they were engaged in a losing battle, many of the Anglo-Irish adopted the Brehon Laws, which, surviving the reigns of Henry VIII and Queen Mary, did not fall into complete disuse until the Revolution of 1688.

We cannot but admire the foresight of the Brehon judges whose wide experience of canine affairs enabled them to foresee every consequence arising from canine, human, or canine-human bickerings.

We read that the pet wolves of the Irish possessed the same privileges as their domestic dogs and are reminded of the wolves of Ancient Gaul, which were crossed with the native hounds and, according to Pliny, became the undisputed leaders of the packs.

The Brehon Laws grade the dogs into fully lawful, half and quarter lawful dogs. The fortunate lawful dogs enjoyed the recognition of the law, which turned to their advantage in a Brehon's court, a privilege denied to their less fortunate brothers. The *Senchus Mor* provides a list of lawful dogs with relevance to the stay of distress taken for the restitution of these dogs. Besides the fully lawful hunting hound, the hound kept for pursuing thieves, the dog outside the door, and the fully lawful hound, we are introduced to a variety of lapdogs, such as the lapdog of a queen, the lapdog which is kept in the house and the lapdog of a pregnant woman. We read about the watch-dog for every kind of cattle, the chained dog and the hound which does three things, perhaps identical with the "dog of the three deeds" namely tracking, seizing and defending a person attacked, in short, the police dog of yore.

The *Book of Acaill* checks three major dog trespasses, that of "the springing dog, i.e. the dog which makes a spring," that of "the crouching dog, i.e. the dog against which searching does not prevail," and that of "a dog of dogs, i.e., a dog which whelps." The

worth of a whelp is laid down at one ninth of the value of its dam.

We hear about fines relating to dogs being injured by cattle, and, vice versa, cattle being injured by dogs, of fines for dogs hunting a different deer from the one singled out for pursuit, fines for maiming a chained dog (a thousand years before the introduction of the various Acts referring to cruelty to animals), and of fines for setting a charmed morsel for a dog in order to test the power of the charm.

The *minaigh* dog of Ancient Ireland, which, akin to many of its modern compatriots, showed a tendency to attack lambs, fowl, and the pet animals of the house, was supplied with a compulsory muzzle, while the dog referred to as the *anfaiigh* dog, the careless dog, which did not distinguish its master from the neighbours, was compelled to wear eye-caps. This, however, was not the only restriction imposed on the unfortunate *anfaiigh* dog. It was housed in a kennel where its food was served strictly according to regulations, it had to be tethered to a stake which it could not pull down, and its status was unique, for it was regarded as lawful when within and unlawful when outside its kennel.

The dogs of the chieftain grades were let loose at bedtime and tied up when the horse-boy let out the horses, while those of the *feini* grades were released at the time when the cows returned to their stalls and tied up at the rising of the sun.

The rules dealing with the dog fights of Ancient Ireland must warm the heart of anyone who has at one time owned a terrier of belligerent temperament, has watched, with a feeling of relief, the policeman pass his door, or has entered into one of the endless disputes (with a view to a legal ending) arising from a fight in which each dog figures as the victim of the aggression of its opponent.

In the dog fights at the time of the Brehons nothing was left to chance and every brand was taken into consideration.

The law discriminated between dog fights held with or without cognizance of both owners, provided nobody interfered, and between battles fought in the presence of both, one, or neither of its owners, it decided by whom the battle was incited and whether a sane adult had egged one or both dogs on, sometimes even compelling those present to pay for "everything the dogs damaged under their feet". Provision was also made for fights on the dogs' own accord. The "impartial interposer" who separated the dogs was exempt from fines for inflicting injury on the belligerents, provided he did not harm them deliberately, in which case a fine for foul play was imposed on injuries which could have been avoided. The "half-interposer," the man who sided with one dog and injured the other deliberately, was also liable to pay the fine for foul play, besides being responsible for damage on the part of the dog on whose behalf he entered the arena.

The law discriminates between profitable workers and idlers, between abettors and idlers, and idlers who are, or are not abettors.

The dog sections of the Brehon Laws would fill a small book and the more we peruse them the less antiquated they appear to us. Perhaps they are, paradoxical as it may sound, the most human of canine codes.

"The more sensible the inciter of the dog, the less liable is the dog, and the less sensible the inciter, the more liable is the dog."

Thus the Brehon judges attribute the same degree of reason to man and dog.

The ancient Irish laws did not include the hoxing, expedition or lawing of dogs, the cruel custom of cutting off one or more of their toes to prevent their being used for hunting. We have, however, proof that although this decree was undoubtedly introduced into Ireland as part of the English Forest Laws, the people of this island did not take kindly to the mutilation of their pets. It was presumably for this reason that in 1460 Edward IV granted a charter exempting all his "archbishops, bishops, abbots, earls, barons, justices, ministers, provosts, all his bailiffs and subjects from lawing their dogs."

In the reign of William III in 1698 "no person whatsoever not having an estate of freehold in his own or his wife's right of the yearly value of £40 at the least over and above all debts by him owing, either for himself or as a servant to any other, unless he be a servant or hath no other way of livelihood for his wages from such person, shall have or keep any hound, beagle, greyhound or land spaniel within this kingdom, except whelps under the age of 12 months, which shall be kept at nurse for persons qualified within this act for having the same, on pain that such hound, beagle, greyhound or spaniel so kept contrary hereunto shall or may be seized by or taken away by any justice of the peace where the same shall be so kept, or by" — to cut the language of the law short by "curtailing" it — by persons possessing a warrant as well as the necessary financial qualifications.

The keeping of "Setting Dogges" was a privilege confined to persons owning a freehold estate of £100 or a personal estate of £1,000 with the exception of people licensed hereunto by the Justice of the Peace.

Letters to the Editor

Dear Editor,

Over the last few years the Club has lost through death a number of its dedicated members. Recently we lost another great friend of the Club — in Mrs. Murphy. Mrs. Murphy was not a member of the Irish Wolfhound Club but there are few of us who have not been at the receiving end of her warm and cheerful hospitality at Ballyhagan House. She will be greatly missed.

Sincerely yours
ISOBEL WALTON

In 1773 George III issued a decree that prohibited the keeping of any Mastiff, cur, Bulldog or dog within 50 yards of a house or thoroughfare without a block of wood fastened to the animal's neck.

This custom still prevailed last century, for Sir Francis Head writes in *A fortnight in Ireland*, published in 1852, that wherever he went he "observed dogs infested with a wooden log round their necks which bruised their knees when they attempted to go faster than a trot." On being informed that this ignominy was inflicted on the poor brutes by the aristocracy of England he arrived at the philosophic conclusion that "the log is, no doubt, wisely intended by Parliament to balance the infliction of the income tax; and, as an English dog runs about unfettered but *taxed* and an Irish dog untaxed but *logged*, it would be of argument if the two dogs were to meet, which was the freest animal of the two."

Leonard McNally, in *The Justice of Peace for Ireland*, dating from 1812, assures us that it is no felony to steal dogs which are of a base nature, and that, although a civil action may be maintained for the loss of them, yet they shall never be so highly regarded that for their sake a man shall die.

The Dublin Metropolitan Police Act empowered the police to destroy animals suspected of rabies and in 1842 added the power to seize ferocious, unmuzzled dogs.

The licence duty was imposed by the Dogs' Regulation Act of 1865. It amounted to 2 shillings for each dog in addition to 6d. for the certificate. The Dog Acts of the last quarter of last century were chiefly concerned with muzzling regulations and the seizure of rabid and stray animals. With the introduction of quarantine into the British Isles and Eire, compelling imported dogs to undergo six months' solitary confinement, rabies has disappeared, together with muzzling regulations, and many of these laws have become irrelevant.

"A stolen bitch will not bear a good litter"

To all Irish Wolfhound lovers I would like to express sincere thanks for making myself, my husband and our five Wolfhounds so welcome to Ireland. Without exception we have met with kindness and encouragement and have thoroughly enjoyed the friendliness and camaraderie at the shows and get-togethers.

May I also take this opportunity to congratulate the Editor and Committee on such an attractively produced and interesting magazine, and through its papers wish everyone a happy and successful show season.

Linda Gover.
Owenmore Irish Wolfhounds

Irish Wolfhounds in Denmark and Sweden.

It was a great honour to be asked to judge the Danish and Swedish Wolfhound Club Shows. This made a very pleasant holiday as I stayed for just over a week, and both clubs looked after me very well. My thanks to all for a most enjoyable time.

The Irish Wolfhound in Denmark is in good condition — some of the best heads I have seen, with good length of muzzle, dark eyes, super small roset ears, and most bites were good. However, the danger signs are there to be seen as they are in England, so care should be taken when considering breeding.

Most hounds had a good reach of neck, nice body length with a rise over the loins and excellent tail settings. Good hindquarters and nicely bend stifles were in the majority.

The movement overall was good, with plenty of reach in front, and lots of drive behind.

An area for concern is the shoulder and upper arm. Although many were acceptable quite a few were not. Angulation of the shoulder on some of the hounds was a little straight, as was the upper arm which meant there was a lack of brisket. This did affect the front movement. Back movement on the whole was good.

In the main, the Irish Wolfhound in Denmark is typical of the breed, with all the curves in the right place, giving a pleasing outline and good type.

I was delighted to learn that my B.I.S. Faxbos Don Juan owned by Connie Tenson made up his Danish Championship. Second

B.I.S. was DK. Ch. Faxbos Wanda. Third B.I.S. went to Abelia a very nice bitch, and forth B.I.S. to Nadia Blue Barbara.

In Sweden there were some good examples of the breed, but they were in the minority. There were quite a few faults in many of the hounds that should cause some concern. I have judged the breed for many years and I have never seen so many light eyes at one show. Besides being a breed fault, it also takes away from the friendly expression the Irish Wolfhound should have. There were quite a few very nervous ones, in fact, I could not go over some of them. A little dissent was shown by some of them which is not good for the breed.

The shoulder and upper arms again could be improved, as could the movement which was poor, many were pinning in in front, and had weak back ends causing close movement behind.

The one thing the breed lacks is overall quality, but all is not lost — there are some good Hounds, and if the club and the breeders are willing, things can be improved.

My B.I.S. was Nordch Graystone Merlin owned by Mats Hansson, Second B.I.S. a very shapely bitch Such Godinis Sara My Lady. Third B.I.S. a very promising young dog Wolf Tone Max and fourth B.I.S. was Wolf Tone Frigga.

I would like to thank everybody in both countries for their friendliness, and the good spirit in which my decisions were received, and of course a big thank you to the clubs for giving me the opportunity to go over your hounds. Best wishes to everyone in 1988, and a successful show season.

M.G. RATHBONE-SCOTT



NEW

AN IRISH WOLFHOUND BRONZE STATUETTE

FROM IRELAND



- **LIMITED EDITION OF ONLY 500, WORLD WIDE**
- **CERTIFICATE OF AUTHENTICITY WITH EACH BRONZE**
- **INDIVIDUALLY ENGRAVED WITH THE EDITION NUMBER**
- **THE HOUND IS JUST OVER 8" TALL, AND STANDS ON A BASE 8½" x 4¾" APPROXIMATELY**
- **MODERATELY PRICED AT ONLY £60.00 STG, PLUS P & P – G.B. & IRELAND £2.50, EUROPE £5.00, REST OF THE WORLD £10.00.**

The Cuan Studio sought the advice of Miles and Sue Rathbone-Scott of the well known Tullygirvan Irish Wolfhounds of Bangor. They helped in the production of this excellent cold cast bronze, one of the few to be made and produced in Ireland, making it a real collector's item.

The Cuan Studio

**Enterprise House
Balloo Avenue**

Bangor, Co. Down

N. Ireland BT19 2QT

Telephone (0247) 461373

Chulchoill Irish Wolfhounds

Breeders: Mel & Anita Wilcox

**The Forge Cottage,
Kilcandra, Kilmacurragh, Co. Wicklow.
Telephone 0404-8248.**



To owners in America, New Zealand, Ireland North and South, of puppies from two beautiful litters in 1987 Chulchoill Irish Wolfhounds send Best Wishes for a successful and happy 1988.

Picture shows **ATHCARNE OISIN** — sire and grandsire of our 1987 litters — winning the Maguire Movement Cup with his breeder, Tony Redmond.

ATHCARNE IRISH WOLFHOUNDS



Photo: E.C. Murphy

Coolbreagh Crana

Young daughter of Ch. Athcarne Coolbreagh Clodagh

TONY & GER REDMOND

ATHCARNE COTTAGE, DULEEK, CO. MEATH
PHONE: 041-25313.

Gulliagh Irish Wolfhounds



Culvercroft Benjamin of Gulliagh (11.10.'85) at 25 months

(Int. Ch. Gulliagh Galleon x Culvercroft Alanna)

1987 was marked by the loss of "Martin" at 11¼ years. A great character who gave us so much pleasure and excitement in the showing and was such a lovable, obstinate companion in the house. Happily, we have no shortage of his blood as all our stock (except **Whysper of Lainston**) is descended from him. His daughter, **Gulliagh Ballykelly Cait** (a spritely 8 year old), link's "Martin" to our original Nendrum — **Ballykelly foundation stock**. And her son, **Int. Ch. Gulliagh Galleon**, has been used with several Martin daughters to very good effect, including the **Hydebeck** litter ex **GB Ch Hydebeck Ballycarrie** producing **GB Ch H Reginald Snuffson** and our own **H. Nessa of Gulliagh**, and the **Culvercroft** litter ex Culvercroft Alanna, giving us Benjamin (above).

All our adult stock have won Green Stars in 1987 —

- **Int. Ch. Gulliagh Galleon** — 5 Green Stars all with BOB, and Stud Dog Bowl for the second year running.
- **Culvercroft Benjamin of Gulliagh** — 2 Green Stars with BOB, including BIS at the Sporting Breeds Ch. Show, Res CC at 18 months at Birmingham National.
- **Hydebeck Nessa of Gulliagh** — 2 Green Stars with one BOB.
- **Whysper of Lainston** — 2 Green Stars.
- **Gulliagh Hecla**, Whysper's young daughter — 2 BOB at Open Shows.

1988 has opened wonderfully with **Galleon** winning Reserve Best in Show at the Irish Wolfhound Club Championship Show (entry 240 IWs) under Mr Tom Horner, and **Benjamin** winning Green Star dog at St. Patrick's Day Show under Miss Sheelagh Seale and Reserve C.C at the Hound Association of Scotland Ch Show under Mrs. Helen Baker. Also, **Nessa** has produced 7 healthy puppies by her half-brother, **Gulliagh Harvey** (ex Whysper).

Tim & Marion Finney, Gulliagh Farm, Lecklinstown, Naul, Co. Dublin.
Telephone: Dublin 413188

Gulliagh Irish Wolfhounds



Int. Ch. Carrokeel Coillte Merlin
at 9½ years

26 February 1976 — 1 June 1987

"MARTIN"

ALWAYS LOVED, WILL NEVER BE FORGOTTEN

Ballyblarney Irish Wolfhounds



Carrokeel Clasby

Seamus Buggle, Narraghmore, Ballitore, Co. Kildare
Tel: 0507-26625

TULLYGIRVAN HAVE MOVED!

Tullygirvan Irish Wolfhounds



Tullygirvan Bridget

(Tullygirvan Melvin x Tullygirvan Penna)

Shown very nicely, Bridget is now $\frac{3}{4}$ of the way to her Irish title.

In 1987 she attended 2 shows winning G.S. under Hound Specialist Mrs. Sylvia Marston, and B.O.B. under Breed Specialist Miss E.C. Murphy.



Chulchoill Brega

Athcairne Oisín x Orlaita Una

Grand-daughter of Tullygirvan Beauty (2 c.c.'s) and Ir./Eng. Ch. Carrokeel Coillte Merlin, Brega is pure Tullygirvan on her bitch line.

Tullygirvan – well known for beautiful Irish Wolfhounds
PUPPIES SOMETIMES AVAILABLE

MILES & SUE RATHBONE-SCOTT

23, Southwell Road, Bangor, Co. Down. Northern Ireland. Phone (0247) 461373.

BEARNA BUÍ IRISH WOLFHOUNDS



Genevieve of Bearna Bui



Gwyneth of Bearna Bui

*Sire: Int. Ch. Gulliagh Galleon
Dam: Carrokeel Elvin of Bearna Bui
(Both at 18 months)*

JIM BEHAN

145 Glassmore Pk., Swords, Co. Dublin. Ireland. Tel: 402305

Tolkavalley Irish Wolfhounds



Left to right: T/V Belleek, T/V Barna & T/V Athcarne Megan — all 1st Prize Ch. Show winners.

“Tolkavalley Belleek” has 2 Res. G.S. Awards. All were only lightly shown in 1987.

Owner: Miss Isobel Walton
Hazelbridge, Knocksedan, Swords, Co. Dublin.

knocknarea írish wolfhounds



Knocknarea Briciu

'Briciu' was awarded Green Star at the Dublin Dog Show Society All Breed Ch.
Show, 26.12.'87.

Judge: Tim Finney

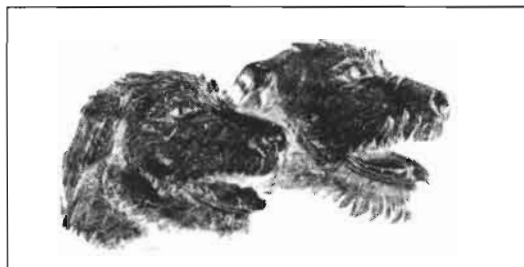
Ulli & Ika Peiler

The Burrow, Clooneen, Ballymote, Co. Sligo. Phone: 071-65295

MASTERPIECES OF IRISH CRAFTSMANSHIP

by Ogham Crafts of Dublin, internationally recognised for creative designs

Irish Wolfhound Brooch



"One of the Lords of Creation"

Ever since Homer, in poems telling of events that happened more than 3,000 years ago, first mentioned a brooch made in the form of a hound, the hound and the wolfhound have been celebrated and portrayed in poetry, sculpture, tapestry and painting.

Wolfhounds have featured in the legends of Cu-Chulain and the Fianna, in social history, and in the arts from ancient times right up to the beginning of the nineteenth century when, with the almost complete destruction of wolves in Ireland, the number of wolfhounds were greatly reduced and became gradually scarcer. The last of the Irish wolves was killed in the Wicklow Mountains in the year 1770 and in the Myshall, Co. Carlow in 1786.

Now, with the revival of interest in the Irish Wolfhound in Europe, United States and many countries in other continents, Ogham Crafts have designed this new and exclusive Wolfhound Brooch specially made for admirers of this, the noblest of all the canines – one of the lords of creation, famous for their devotion to their human friends and strong attachment to one another.

The Brooch is now available in Sterling Silver at £36.00 (U.S. \$60.00) or in 18 Carat Gold at £375.00 (U.S. \$595.00), inclusive of airmail postage and insurance.

The Children of Lir



The story of how the Children of Lir became swans, perhaps the most loved of all Irish legends, is one which has never lost its appeal and is as popular today as it has been for more than a thousand years.

Here in this new pendant, an exclusive and original creation of Ogham Crafts, the children are beautifully portrayed as four silver swans in flight over the lake Isle in Mayo to which they have returned to become children again.

Handcrafted in sterling silver, price £75.00 (U.S.\$120.00) or in 18 carat gold £700.00 (U.S.\$1,125.00) the pendant with matching chain in presentation case is accompanied by a leaflet on the legend. Prices include Air Mail postage and insurance.

ogham crafts ltd. 1 HILLCOURT ROAD, GLENAGEARY, Co. DUBLIN. TEL: 853561

Carrokeel Irish Wolfhounds



Carrokeel KALYPSO is now five years old.

Photographs & Pedigrees of Irish Wolfhounds

Copies of the original hard-back edition of **RAISING SHOWING AND BREEDING THE IRISH WOLFHOUND** are available. This is the only edition which features photographs and pedigrees of Irish Champions from 1925 to 1974. It also includes many of the classical articles on our breed written before and after the turn of the century by Graham, Everett and other acknowledged breed experts who carried on his work. In addition there is a very interesting article by the late Joe Donnelly (Donbeg Irish Wolfhounds). At the time the article was written Mr. Donnelly had six Irish Wolfhounds, two aged 14 years, one 10 years, one 9 years and two "pups" at four years. The oldest hound he had was 15 years.

Price £15.00 sterling plus £1.95 p&p.

U.S. \$30 includes surface post – allow six weeks

Airmail is a prohibitive \$18.00 extra because of the weight of the book.

Elizabeth C. Murphy (Miss)
Ballyhagan House, Carbury, Co. Kildare, Ireland.
Telephone(0405) 53017 or (01) 28011



