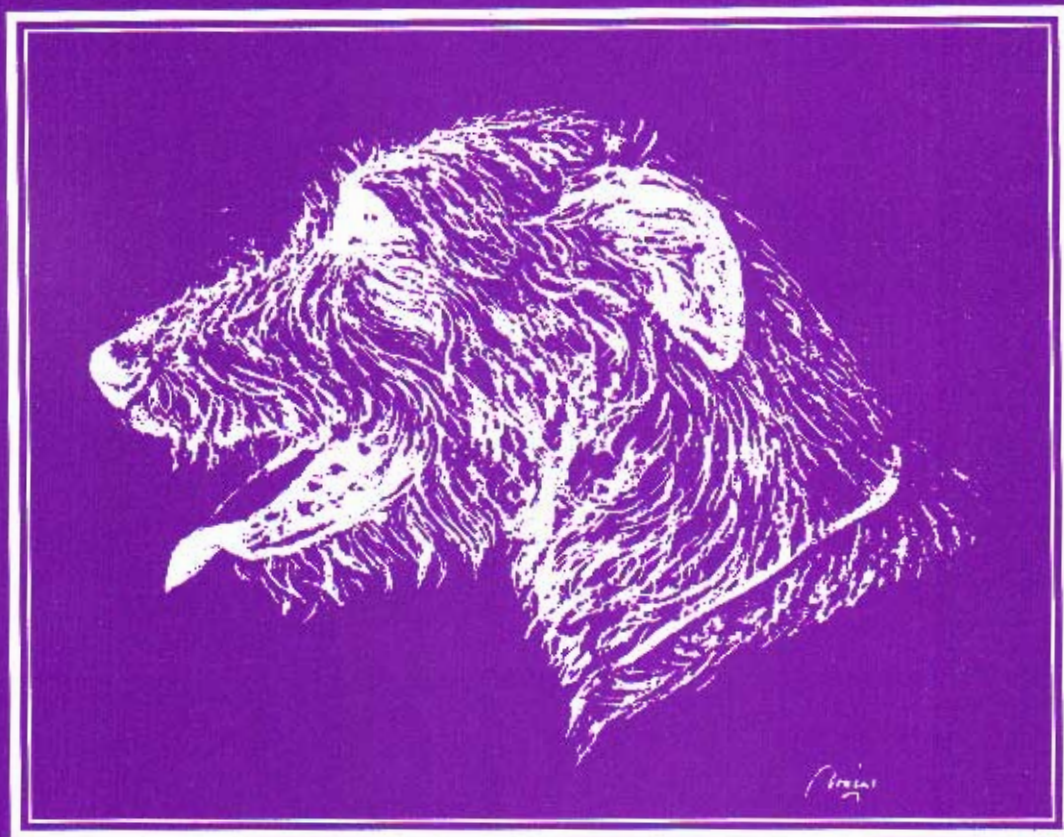


# THE IRISH HOUND



## The Irish Wolfhound Club of Ireland

Established 1925

1995

# THE IRISH WOLFHOUND

## The standard of excellence and list of points in order of merit.

1. **General appearance:** The Irish Wolfhound should not be quite so heavy or massive as the Great Dane, but more so than the Deerhound, which in general type he should otherwise resemble. Of great size and commanding appearance, very muscular, strongly though gracefully built, movements easy and active; head and neck carried high; the tail carried with an upward sweep with a slight curve towards the extremity. The minimum height and weight of dogs should be 31 inches and 120 pounds; of bitches, 28 inches and 90 pounds. Anything below this should be debarred from competition. Great size, including height at shoulder and proportionate length of body, is the desideratum to be aimed at, and it is desired to firmly establish a race that shall average from 32 inches to 34 inches in dogs, showing the requisite power, activity, courage and symmetry.
2. **Head:** Long, the frontal bones of the forehead very slightly raised and very little indentation between the eyes. Skull, not too broad. Muzzle, long and moderately pointed, ears small and greyhound-like in carriage. Bite, scissors ideal, level acceptable.
3. **Neck:** Rather long, very strong and muscular, well arched, without dewlap or loose skin about the throat.
4. **Chest:** Very deep. Breast wide.
5. **Back:** Rather long than short. Loins arched.
6. **Tail:** Long and slightly curved, of moderate thickness, and well covered with hair.
7. **Belly:** Well drawn up.
8. **Forequarters:** Shoulders muscular, giving breadth of chest, set sloping. Elbows well under, neither turned inwards nor outwards. Leg: Forearm muscular, and the whole leg strong and quite straight.
9. **Hindquarters:** Muscular thighs and second thigh long and strong as in the Greyhound, and hocks well let down and turning neither in nor out.
10. **Feet:** Moderately large and round, neither turned inwards. Toes, well arched and closed. Nails, very strong and curved.
11. **Hair:** Tough and hard on body, legs and head; especially wiry and long over eyes and under jaw.
12. **Colour and markings:** The recognized colours are grey, brindle, red, black, pure white, fawn, or any colour that appears in the Deerhound.
13. **Faults:** Too light or too heavy a head, too highly arched frontal bone; large ears and hanging flat to the face; short neck; full dewlap; too narrow or too broad chest; sunken or hollow or quite straight back; bent forelegs; overbent fetlocks; twisted feet; spreading toes; too curly a tail; weak hindquarters and general want of muscle; too short in body; pink or liver-coloured eyelids; lips and nose any colour other than black; very light eyes.

## List of Points in order of Merit

1. Typical: The Irish Wolfhound should not be quite so heavy or massive as the Great Dane, but more so than the Deerhound, which in general type he should otherwise resemble.
2. Great Size and commanding appearance.
3. Movements easy and active.
4. Head, long and level, carried high.
5. Forelegs, heavily boned, quite straight; elbows well set under.
6. Thighs long and muscular; second thighs, well muscled, stifles nicely bent.
7. Coat, rough and hard, especially wiry and long over the eyes and under jaw.
8. Body, long, well ribbed up, with ribs well sprung, and great breadth across hips.
9. Loins arched, belly well drawn up.
10. Ears, small, with greyhound-like carriage.
11. Feet, moderately large and round; toes close, well arched.
12. Neck, long, well arched and very strong.
13. Chest, very deep, moderately broad.
14. Shoulders, muscular, set sloping.
15. Tail, long and slightly curved.
16. Eyes, dark.

*Note:* The above in no way alters the 'Standard of Excellence' which must in all cases be rigidly adhered to; they simply give the various points in order of merit. If in any case they appear at variance with Standard of Excellence it is the latter which is correct.

COPYRIGHT © IRISH WOLFHOUND CLUB OF IRELAND

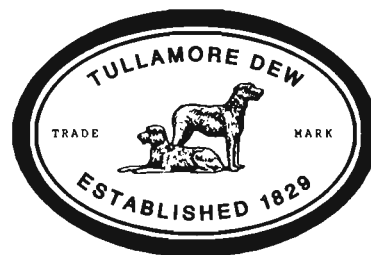
All rights reserved. No part of this publication may be reproduced, recorded or photocopied without the prior permission of the Secretary of the Irish Wolfhound Club of Ireland. Articles printed in this magazine represent the opinion of the authors and are not necessarily endorsed by the Irish Wolfhound Club of Ireland.

## CONTENTS

	Page
Editorial .....	2
Tribute & Obituary - <i>Hilda Hughes</i> .....	3
Annual General Meeting .....	7
Club Accounts .....	9
Green Star Winners .....	10
Longevity .....	11
New Champions .....	12
Obituary - <i>D.E.S. Hudson</i> .....	14
Championship Show June '95 .....	15
Prevalence of Congestive Cardiomyopathy .....	23
World Congress .....	25
Federation of European Irish Wolfhound Clubs .....	26
EIWC Weekend - Germany .....	26
Northern Ireland Club Ch Show .....	27
I.W.C. of Ireland Club Open Show .....	29
Bray All Breed Ch Show .....	31

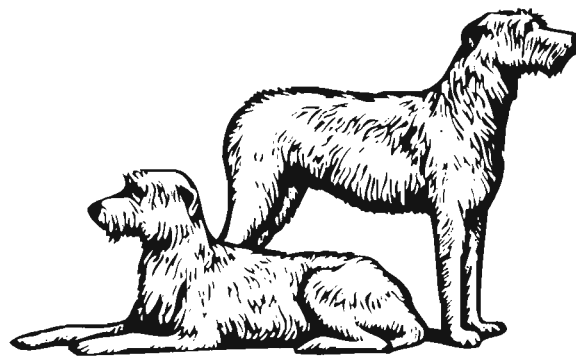
## 1995/96 OFFICERS & COMMITTEE

President	Miss E C Murphy
Vice-Presidents	Miss I Walton Mr A Killykeen-Doyle
Chairman	Mr J Behan
Hon. Treas.	Mr T Finney
Hon. Sec.	Mrs H Hughes (Oct. '95-Jan. '96) Mr S Buggle from Jan. '96
Committee	Mr S Buggle Mr D Bushby Mr J Kelly Mr B Foley Mrs K Kelly Mrs I Peiler



# Tullamore Dew®

SPONSORS OF  
THE IRISH WOLFHOUND  
CLUB OF IRELAND



*Sponsors of Our Club*

## EDITORIAL

There have been a number of significant developments in our Club since our 1993/94 magazine.

Firstly the 8th World Congress of Kennels Clubs was held in Dublin in July and was attended by 25 Kennel Clubs worldwide. This was an important opportunity for Irish Breeds Clubs with many papers, workshops and events being organised.

From an Irish Wolfhound perspective the trojan work done by our President Betty Murphy cannot be underestimated. Her pivotal role as IKC representative and co-ordinator of the Irish Breeds Workshops necessitated putting in phenomenal hours on our behalf.

The awarding of the CACIB was the first ever in this part of the world. We extend our congratulations to Debbie Tebbutt (Dog CACIB) and Linda Gover (Bitch CACIB). A report on the Congress Week appears elsewhere in this issue.

The welcome return of the generous sponsorship from Tullamore Dew added significantly to our positive financial position. As a Club we appreciate very much the renewal of this sponsorship which we believe will be mutually beneficial.

We extend our Congratulations to our new champions Kelly's Blossom and Tebbutt's George.

Our Club show was held in Setanta House, and was again successful but some reservations were expressed regarding temperament.

Sadly a number of well known Irish Wolfhound people passed away recently, Miss Susanne Hudson, (Brabyns), Miss Margaret Harrison (Sanctuary) and Mrs. Helen Baird (Outhwaite).

Finally, one event eclipsed all others in our Club - the loss of our Secretary Hilda Hughes in January. Hilda epitomised all that was good in our Club and served diligently and with distinction for 20 years. Many fine tributes have been made to Hilda, all well deserved. Her efforts in promoting the breed will be sadly missed and we extend our sincere sympathy to her family and friends.

At the January Committee meeting, Hilda indicated that she would not be able to continue as Secretary due to illness. The committee appointed Seamus Buggle as Secretary for the rest of the year. Thank you Seamus.

We look forward to a somewhat subdued 1996 but encourage all members to continue their efforts on behalf of the Club.

**Jim Behan**  
*Chairman*

## OUR NEW SECRETARY

**SEAMUS BUGGLE,**  
**Narraghmore,**  
**Ballitore,**  
**Co. Kildare.**

**Telephone: 0507 - 26625**

The committee would like to thank Seamus for taking over as secretary at short notice. We considered Seamus a very suitable choice, he has been on our Committee for many years, and like Hilda, he is an ideal choice as he is not very actively involved in showing and breeding.

Seamus himself was initially apprehensive. We agreed with him that following in Hilda's footsteps would not be an easy task but assured him of our continued co-operation and support. Thank you Seamus. *ECM*



## • MAGAZINE 1995 •

Our thanks to all who helped with the preparation of our magazine.

Betty Murphy who put all the material on disk for the printer; Ika and Ulli Peiler, Tim Finney, Seamus Buggle and Tony Doyle who helped with the tedious work of proof reading and especially to all who contributed articles, show reports, advertisements, etc.

**Jim Behan,**  
*Editor*

## IN MEMORIAM Mrs. Hilda Hughes

Secretary Irish Wolfhound Club of Ireland 1977 - 1996

Mrs. Hilda Hughes tendered her resignation at the January, 1996 Committee meeting as she was not able to continue as Club Secretary due to illness. Hilda then went back to England to live near her son and his family. It was with great sadness we then heard from her son that Hilda died within a week of her return.

Hilda was a marvellous Club secretary for nearly 20 years. She was efficient, effective and a great friend to the breed. She was held in high esteem both at home and abroad.

Many of us were fortunate enough to know her as a friend as well as a colleague. She will be greatly missed by our Club and its members.

We extend our sympathy to her son Jim and his family.

**Ar Dheis De go raibh a anam.**

*(May her soul be on the right hand side of God)*

## TRIBUTE TO HILDA



HILDA AND "TARA" OUTSIDE HER LOVELY HOME IN TRAMORE, SEPT, 1995

When Hilda told us of her illness and of her plan to return to England to be near her family, the committee decided to replace the usual profile Section in our magazine with a happy and

light-hearted tribute to Hilda and invited short contributions from Wolfhound people at home and abroad. We envisaged the pleasure and fun Hilda would have as she read the tributes. We hope that Hilda, now enjoying the company of family, friends and hounds gone to Heaven before her, will still enjoy the tribute.

My apologies to all who did not have time to contribute. The publication date left very little time to contact people.

*ECM*

### ***Jim Beban***

I met Hilda for the first time when she and her husband Eric visited Dr May with their lovely bitch "Aonvaar of Mount Patrick". Even at that first meeting I felt that Hilda was someone special.

She was gentle, very sincere and her great love for the Irish Wolfhound was very evident. Her qualities were very soon recognised and she was elected to the Committee of our Club. Two years later she became Club secretary - a position she held for 20 years, only resigning due to ill-health a few weeks before her sad passing a few weeks ago.

Hilda looked after us in the Club very well and never failed to remind us of our duties towards our Club and breed and had no hesitation in chastising us when she thought it necessary.



Hilda had a lovely way about her. We never had a worry as she ran the affairs of the Club so very well. When Hilda was looking after things we knew they were in good hands. No one was more dedicated to the Irish Wolfhound.

I feel a great personal loss with Hilda's passing and her loss is a grave blow to the Club. I loved her for her honesty, sincerity and her deep affection for the Irish Wolfhound and how she always tried to protect them.



HILDA IN ACTION AS SECRETARY  
AT COMMITTEE MEETING SEPTEMBER, 1995  
JIM BEHAN, CHAIRMAN, AND IKA PEILER ALSO IN PHOTO

### **John Briggs (UK)**

*From one former Club Secretary to another*

I have happy memories of 2 weeks in 1973 spent at Tramore with Hilda, her husband Eric, Wolfhounds, Donkeys (not so happy when they brayed in the early hours of the morning) and not forgetting little Beau, the wire Fox Terrier

This was followed by the Club Show in 1975, Judged by Bobby James, when Susan Hudson and myself arrived half an hour before the judging to find no one there. Were we at the right venue?, but Hilda arrived very shortly after and her greeting was "lovely to see you both, now help me set out the Show". At least I didn't have to get the Show ready in 1979.

I am sure that Hilda and Susan are exchanging stories where ever they are now, however I am in no hurry to join them as yet.

### **Trudy Zantingb (Holland)**

We would like to pay tribute to Mrs. Hilda Hughes for all her good work as Club Secretary, especially the work done for the Federation of European Irish Wolfhound Clubs.

Trudy Zantingb  
on behalf of the Board of the Nederlandse  
*vereniging voor de Ierse Wolfshond IERDIE*

### **Linda Gover**

My initial introduction to Hilda and abiding impression of her came not through the Wolfhounds, but through her role as secretary/organiser of the Waterford Canine Club All-Breed show. Such shows are notoriously difficult to run due to the delicate egos and conflicting ideas of those involved, yet such was the drive, personality and sheer magnetism of this physically tiny person, that all who came in contact with her under these circumstances found themselves reacting like obedient schoolchildren powered by a healthy fear of reprimand and a desire to merit 'gold star for good work'.

Gentle when stroked, fierce when provoked in advocacy for or defence of Wolfhounds, for whose welfare and wellbeing Hilda worked tirelessly - I feel privileged to have been of some little help to her on occasions and to have spent happy days at Spring farm as a friend. I am forever thankful that I already owned Wolfhounds before meeting her, for I have frequently wondered whether I would have proved strong and convincing enough to have passed her "grilling" to gain approval as a suitable owner.

It is a consolation to know that Hilda has not journeyed on alone, for Bonny, her beloved and devoted Wolfhound companion for almost ten years seemed to feel that life had little left to offer without Hilda so went ahead a day or two before to await her mistress.

*Hilda's main worry if she had to go to hospital was not for herself but for her two much loved hounds. When we went to see her in hospital, her first words to us were full of joy and relief "Linda has taken the "girls" to live with her. Thank you Linda for lifting this great worry from Hilda. ECM*

### ***Ika Peiler***

Hilda had invited me to stay over at her home after the Club's Open Show when it was still held in conjunction with the Waterford Open Show years ago. I gladly accepted her invitation as it is a long journey from Waterford back to Sligo. No way was Nora, the hound I exhibited at the time, to stay the night in the car as I had suggested. Instead Hilda insisted that she should sleep beside me in the guest room in her lovely 'Olde Worlde' thatched cottage. There were two single beds and Nora thought she was in heaven: she was actually permitted to sleep in a real bed! And right next to her owner!

Hilda's hospitality was second to none, but her first concern was for the hounds: they had to be given their dinner before we were allowed to settle down for a meal. After dinner we had a nice long chat, of course about our favourite topic, the Wolfhounds, and I felt so very much at home with her that I could have listened to her stories from the past all night. I tried to slip out very early the next morning without disturbing her, but she heard me and got up and insisted on preparing a nice big breakfast for me, at six o'clock in the morning! What a wonderful gracious friend she was to the breed and everyone who shared her love and concern for the hounds.

### ***Ulli Peiler***

"I will always remember when Hilda was my ring steward at our Club's Open Show. It was very cold with icy and piercing wind. There was I, supposed to be in my prime, with blue lips and stiff hands, and freezing miserably, and Hilda's only concern was for her freezing judge. I think the thought never crossed her mind that she should have been the one complaining. But that was Hilda - a small, fragile looking person with a great heart.

That great heart was also very much in evidence when Hilda felt that she had to protect our breed from being exploited or even just misunderstood. She could be very frank when she thought that someone was not fit to own an Irish Wolfhound. For her a Wolfhound could not be owned but it was a privilege to be allowed to live with and be owned by one. And it was also a privilege for all of us to work together with her for the betterment of the breed and responsible ownership.



HILDA JUDGING JUNIOR HANDLERS AT OUR CLUB SHOW 1992

### ***Esther Jenkins***

Ch Hilda Hughes; stood alone in this class, showed her quality breeding at every opportunity. Level head set on strong shoulders. Wonderful temperament, combined with superb character and devotion to Wolfhounds that we should all try to emulate.

Hilda will be sadly missed by all except those of her hounds that have already passed on before her, their devoted wait is now at an end.

### ***Kitty Mernagh***

Through our first Wolfie "Doona" my friendship with Hilda began twenty years ago. She was a lady of rare calibre and enriched those that she met both in her professional and everyday life. She was a great family woman, having had many years with her late husband Eric and was justifiably proud of her son Jim, Serena his wife and granddaughter Hannah. She had a great love for all animals. She rescued a donkey, cats and a terrier. She had a particular love for her Wolfies, needless to say not just pets but her family.

Hilda was a great community worker. Together with her friend Joan, for half the year she ran the whist drive for the roof restoration fund at Christ Church, Tramore and for the other half

for other local funding, to name one, St. Vincent De Paul Society.

It is very hard to let go of a friend and we will miss her. I have "Hilda's pictorial Galleries" to look at, paintings of her native Humberside to scenes of local interest in counties Waterford and Kilkenny. Painting was another of her talents and though only eight years old Hannah is following in her footsteps.

### **Tony Killykeen-Doyle**

Hilda arrived into my life one stormy night twenty-six years ago with "Aran" to be mated to my Killykeen Torram. This tiny woman with the enormous hound became my dear friend. The resulting puppies were the start of the Moonvoys. All Hilda's hounds were beautiful, enormous and sound and her pride and joy. Hilda did not show very much, she did not need a judge's opinion or approval, she knew their value as specimens and beloved friends.

It was a pleasure to visit and stay at Spring Farm. The gardens were a delight all year round, the hounds lived in the house and had the freedom of the grounds, orchards and gardens. Hilda was a super cook and famous for her apple pie made from the orchard's fruit. Her drawings and paintings are treasured by all who own them. I have lost a dear friend and the Breed has lost its staunchest guardian. Like the Breed motto

*"Gentle when stroked  
Fierce when provoked"*

to me this was Hilda.

### **Betty Murphy**

It has all been said. My own special memory of Hilda is that she was great fun, great company and a truly good person. Hilda was one of our own, she was the only English person I know who could tell Irish people off and get away with it. I still smile as I remember her letter to the FCI (Irish Wolfhounds were listed under GB until 1990) as she forcefully reminded them that 'we' were an independent Republic. Everybody has similar happy little anecdotes to remember about Hilda and we treasure them all.

Following a visit to her in hospital shortly before she died, I felt devastated. On return home the first thing to catch my eye was a Christmas cactus she had brought to me as a small plant on one of her visits some time ago. It was now in full bloom,

radiating life and beauty. Somehow it made me realise that in spite of the physical separation, Hilda would live for ever in our hearts.

**A Profile of Hilda appears in the 1984 "Irish Hound" Magazine.**

## **MEMORIAL SERVICE FOR HILDA HUGHES**

The memorial Service for Hilda Constance Hughes was held at Christ Church, Tramore, 18th February, 1996. It was a joyous gathering of Hilda's family, her son Jim, Serena his wife and granddaughter Hannah and friends. Wolfhound people travelled from all parts of Ireland through snow storms and gales. As we crested the mountains below us in glorious sunshine lay Hilda's beloved Tramore, the atlantic blue and white rushing in to greet us. Hilda would say "the sun always shines in Tramore" and it would seem fit it did for her on this day.

The address by Canon W J. Moynan was moving. He paid tribute to Hilda as a valued church member, involved at all levels in parish work and committees, fund raising, church sales and many good deeds of which we shall never know.

We thank Jim and Serena for having this service as we her friends suffered much pain and sense of loss. We needed the service which enabled us to be together to share the joy and love we all had for Hilda.

Hannah, her granddaughter, did not know many of us but we knew all about her. We shared her first pictures, we knew about her toys, pets, drawings and paintings. Through Hilda's eyes we saw her grow from a tiny baby to be a beautiful child before us, and as always Hilda was right!

Hilda is with her God, in another Spring Farm with Eric and the hounds to greet her. I would like to think she is putting in a good word for all of us.

A wonderful lady has left us,  
Long will she be remembered.

*Tony Killykeen-Doyle*



# THE ANNUAL GENERAL MEETING

## Ashling Hotel, Dublin, 15th October, 1995.

We received several apologies for non-attendance.

The Chairman opened the meeting and thanked all who had attended.

He called for a minute's silence for Gordon Crane, who died this year.

### PRESIDENT'S ADDRESS

Miss Murphy joined the Chairman in welcoming everybody to the meeting.

**New publication** - She congratulated Tony Doyle on his new publication "A Discussion of The Irish Wolfhound". Every new publication adds to our knowledge of the breed. A real understanding of the Wolfhound of the past will guarantee the continuation of correct breed type.

**EIWC** - She reported on the meeting Federation of European Irish Wolfhound Clubs (EIWC), held in Trinity College, on the 15th July, 1995, and congratulated the Dutch Irish Wolfhound Club (IERDIE) on founding the Federation. It was a great pleasure to have the first meeting in Dublin.

Prof. Stockhof, Utrecht University, gave a very interesting talk on the Heart. We hope to publish the text of the lecture in our next magazine.

Our thanks again to John & Kathleen for the most enjoyable "Irish Evening" we had at their Country Club following the Congress championship show on the Sunday night.

Since the Congress Mr Swelheim has sent out minutes of the Dublin Meeting and a copy of the Articles of Association as passed by the meeting. I have made ten copies of these for this meeting.

Next meeting: June 22nd, 1996 Castle Burg, Solingen, Germany. This event will be in conjunction with a sighthound show at which a large entry of Wolfhounds are expected. (See also Article on "Federation of European Irish Wolfhound Clubs")

**The 8th World Congress of Kennel Clubs** - held in Trinity College, Dublin, July, 1995, was voted a great success by the visiting Delegates. The Minister of the Environment, Patron of the Congress, was host to the delegates at a State dinner in Dublin Castle.

The Irish Kennel Club arranged to have Workshops for each of the Irish Breeds in conjunction with the Congress. This was very well attended by our Overseas visitors. Tony Doyle gave the main

Presentation on the Irish Wolfhound and Jim Behan gave the presentation on Judging the breed. Our President, Betty Murphy, was the co-ordinator of the Irish Breeds Workshops on behalf of the IKC. She reported a very positive feed back from overseas Irish Breeds Clubs.

The Irish Breeds Society plan a day seminar on February, 24th, 1996 when the nine Irish Breeds will give their presentations on Judging again. This will make the presentations available to a much wider Irish audience.

**Overseas Clubs** - Miss Murphy brought along a selection of Irish Wolfhound magazines from overseas Clubs for the members.

---

The Chairman wished to acknowledge the amount of work Miss Murphy had put in for the Irish Kennel Club and the Federation of European Irish Wolfhound Clubs (EIWC) as well as our own Club.

### SCRUTINEERS:

Miss Maeve McKenna and Mrs Ann O'Keeffe-Donlon

**MINUTES OF PREVIOUS AGM** were read, Mr Killykeen-Doyle proposed acceptance, Miss Tarah Jenkins seconded.

### TREASURER'S REPORT

Mr Finney went through the accounts. The Club is in a sound position. Miss Murphy proposed acceptance and Miss Jenkins seconded. Mr Finney was congratulated on the accounts.

### SECRETARY'S REPORT

This has been a busy year for our Club and Breed.

During the year, we have admitted 27 Associate Members from Ireland and U.K. and 24 from Overseas. We have up-graded 8 to Full Membership.

We will be discussing the Club Magazine later, but it appears to be generally accepted that the double issue was very good.

A new supply of Club Badges is now available at £4 each, plus postage.

### St. Patrick's Day Stand

Again this was successful and approximately £133.00 was raised. Our congratulations and thanks to Mrs Peiler.

**Tullamore Dew** - have agreed to sponsorship again and have doubled the amount for 1995/1996. We have written to express our appreciation and thanks.

### Club Show

Unfortunately, I wasn't able to attend, the weather was kind, there was a smaller crowd, but it was successful.

BOB was Mr & Mrs Walsh's Bearna Bui Jacinta

Reserve was Mr & Mrs Tebbutt's Bokra George Caredig.

The service for lunch was very bad and they had to open a new room and send out for extra staff before they could serve dinner. We have written to complain and have been assured that it will never happen again. Mr Buggle did an excellent job as Show Manager. It has been decided that Car Parking will be controlled at future shows.

Unfortunately there were two instances of bad temperament, one dog was growling at the ringside and had to be removed.

### Club Stall

This was successful and our thanks are due to Petra Janssen, Lydia Bushby, Catriona Buggle for their help on the stand and to Ika Peiler who organises the supply and availability of the merchandise. £160 was raised for the Rescue Fund, and £35 was donated through the Rescue Fund box. Miss Murphy gave £45 commission on the sales of her books. We would ask members who sell at the Show to make a contribution to the Club. Members were asked to report anyone who tried to sell from cars etc and the Show Manager will deal with them.

### The World Congress of Kennel Clubs

This, of course, was in the hands of the Irish Kennel Club. Miss Murphy, Mr Killykeen-Doyle and Mr Behan did excellent work. Other members helped with the Irish Wolfhound desk in the Irish Breeds Hall. Congratulations to Mrs Gover on her Ch. Owenmore Kestrel winning BOB and first ever CACIB awarded in Ireland or the UK. Congratulations also to Mrs Tebbutt on her Ch/UK Ch. Bokra George Caredig taking the dog CACIB.

### European Federation of Irish Wolfhound Clubs (EIWC)

Everything went very well and I understand a good time was had by all. Our Thanks to Mrs Kelly who organised the social events so well.

The next meeting of the Federation will be held in Germany on 22/23 June, 1996.

The Articles of Association of the Federation of European Irish Wolfhound Clubs. We hope to have print-outs available at the meeting.

### The Irish Kennel Club

There have been a few changes in rules and charges:

<b>Fees:</b>	Registration	- £10 per dog
	Registration of a litter	- £8 per pup
	Transfer of ownership	- £10

There is now a fine of £20 for fouling Show Grounds and £100 if the dog is not registered or transferred **before** the show.

The Irish Kennel Club are launching a fund-raising effort. Tickets will be £100, more details later. They have also introduced "Good Citizen Dog Scheme". Details and a list of training classes is available from the IKC.

---

I would like to express my thanks to Mrs Gover for the excellent work she has done in her area to help to sort out some of our problems.

I would also like to express my regret that Mr Billy Clarke is unable to continue on the Committee, he has worked very hard over the years for the Club.

Now, unfortunately, a down for the breed, we have again heard from the UK Club that puppies are being sent out to dealers. I have written to the IKC enclosing a copy of the letter and am awaiting their reply. This time we have got some names, the breeder is a J. Stack, the bitch is "Mainmoe Castle .....", the breeder of the bitch is a T. Reilly, the sire is shown as Prince MacAodha.

I would remind members that it is against our Code of Ethics to supply dealers. I have also just heard of a breeder in Tipperary, who proposes to breed her bitch every season. Another sad case was reported in the French Club Magazine, a pup was sold in England and the son of the house trained it to be aggressive and seize the arm (as per guard-dog training). The net result, it attacked and bit other people and then the owners didn't want to keep it, so the Rescue Association tried to re-train it but after two attempts to re-home it, it had to be put to sleep.

I have had a few inquiries for pups but have had difficulty to find any available.

Unfortunately, so far the IKC have not sent me the number of registrations.

I would like to thank the Officers and Committee for their assistance during the year and once more ask you to advise me of pups available and any change of address. I am only at the other end of the Telephone line!

## DISCUSSION

There was a discussion on the EIWC (Federation of European Irish Wolfhound Clubs). The Federation will meet in Germany next year on 22/23, June. Copies of the Articles of Association were on display for the members.

The Secretary was asked to advise Mrs O'Keeffe-Donlon of details of meeting in Germany as soon as possible, she hopes to organise travel arrangements.

## RESCUE FUND

As Mr Redmond was delayed Mr Behan gave details of one dog in the North who needed re-housing. Unfortunately it had bitten someone and had to be put down. Aggression seems to be becoming a big problem and breeders were asked to watch carefully for any signs and not to use any dogs of doubtful temperament.

Mrs Wilcox brought to our notice a newspaper report of a bad case of puppy farming, a man had 67 dogs in a confined space, he was brought up for cruelty and was only fined £250 and ordered to keep no more than six dogs. She advised that there was an Irish Wolfhound among the dogs which was in very poor condition and had the worst case of mange she'd ever seen.

Great disgust was expressed about the conditions and the fine. It was decided to try and rescue the Irish Wolfhound. Miss Murphy suggested that we lodge a formal complaint with the Irish Kennel Club under Rule 17 regarding the situation, enclosing the necessary £25.

It was also suggested we write to the ISPCA and to the Garda Superintendent at Macroom. We were also to try to check with other Clubs whose breeds were mentioned and to write to the Editor of "The Cork Examiner" who has published this case.

## CLUB MAGAZINE

It was agreed that the double edition was very good. Mr Killykeen-Doyle complained of the delay in posting and thought they should be posted from Dublin to avoid any delays from the Post Office in the Sligo area. He said there had been many complaints about the delay. It was decided to leave it to the incoming committee.

The magazine to be out for St Patrick's Day. Deadline 31st December. We will use the same printer. The cost of advertising was to be left to the new Committee, it was suggested £30 for full page and £15 for half page.

## MEMBERSHIP

There was a long and heated discussion of Overseas Full Members being allowed to vote. Miss Murphy stated that the

system of postal nominations followed by postal voting was set up by the late Mr Fottrell. It was agreed that all Full Members should have a vote but the Committee look after this.

## RESULT OF ELECTION

<b>Officers;</b>	no change	
<b>Committee;</b>	<i>(in alphabetical order)</i>	
Mr S Buggle	Mr D Bushby	Mr B Foley
Mr J Kelly	Mrs K Kelly	Mrs I Peiler

## Open Show

The Chairman asked for as many entries as possible for the Open Show to support Mrs Jenkins who is judging at our request.

## LURE COURSING

We were to arrange this, possibly in January at Mullingar.

## P.S.

I have been advised since the meeting that there were 199 registrations. This was up considerably on last year.

**The Club Open Show** - was held in November this year, after the AGM The results were as follows:

The Twyman Bowl was won by Kelly's McGilligan of Nutstown

The Moonvoy Cup was won by Peiler's Beama Bui Image of Knocknarea

The Ballyvalla Tray was won by Fitzpatrick-Odahamier's Owenmore Merlin

Judge Mrs Esther Jenkins.

*Hilda Hughes*  
Hon. Secretary

## CLUB ACCOUNTS

Our Treasurer presented the AGM with a full and comprehensive set of accounts for their approval. These accounts were audited as usual by D. O'Connor & Co. Chartered Accountants for the year ending June, 1995.

Income was up this year due in the main to the return of a generous sponsorship from Tullamore Dew. However total expenditure was also higher due to increasing costs and some non recurring items.

Overall the financial position of our Club is reasonably healthy and compliments were extended to Tim Finney on his usual high standard of presentation.

Our Club appreciates the help and support of all who contributed to making 1995 a financial success.

*The Editor*

## GREEN STAR WINNERS 1995

Show	Judge	Green Star winners	Points
IRISH KENNEL CLUB	MRS BILLINGS	CH CAPITAN OF SHANTAMON CH/UK CH BALLYPHELAN CASCADE CAREDIG	9 9
COMBINED CANINE CLUB	MR H TONKS	CH CAPITAN OF SHANTAMON BLOSSOM OF NUTSTOWN	5 9
CORK + DISTRICT	MRS MCGOVERN	CH OWENMORE KINGFISHER BLOSSOM OF NUTSTOWN	7 8
SOUTH TIPPERARY	MR TYPERMAN	CH CAPITAN OF SHANTAMON BLOSSOM OF NUTSTOWN	5 3
HIBERNIAN	MRS M TEMPERMAN	CH CAPITAN OF SHANTAMON BLOSSOM OF NUTSTOWN	6 3
MUNSTER CANINE CLUB	MRS J HOLMES-BROWN	CH CAPITAN OF SHANTAMON CH GULLIAGH NADIA	10 6
IRISH WOLFHOUND CLUB	MR SAM EWING	CH/UK CH BOKRA GEORGE CAREDIG BEARNA BUI JACINTA	10 10
SWORDS	MR D MCMILLAN	----- CH GULLIAGH ISOLDE	2
KILKENNY	MR B DOAK	CH CAPITAN OF SHANTAMON NUTSTOWN FERN OF CALCARA	9 4
BRAY	MR R ERATH	CH CAPITAN OF SHANTAMON BEARNA BUI JACINTA	5 5
IKC INT. SHOW	MR G HEAD	CH/UK CH BOKRA GEORGE CAREDIG CH OWENMORE KESTREL	10 10
SLIGO	MR G MCFAUL	CH CAPITAN OF SHANTAMON BLOSSOM OF NUTSTOWN	10 2
DUNDALK	MR T AGNEW	KILLYKEEN NAGLE BLOSSOM OF NUTSTOWN	4 3
DUNLAOGHAIRE	MRS G MCDOWELL	CH CAPITAN OF SHANTAMON BEARNA BUI JACINTA	3 4
HOUND	MR T BRODY	waiting IKC conformation waiting IKC conformation	
CLONMEL	MR J KNIGHT-MESSINGER	waiting IKC conformation BEARNA BUI IMAGE OF KNOCKNAREA	8
KILLARNEY	MR R BESSOT	waiting IKC conformation MISTWEAVE MONEYPENNY	7
LIMERICK	MR T CUNNINGHAM	CH OWENMORE KINGFISHER BEARNA BUI IMAGE OF KNOCKNAREA	7 7
TRALEE	MRS M HUTCHINS	waiting IKC conformation BEARNA BUI JACINTA	8 6
DROGHEDA	MRS E PYKE	----- BEARNA BUI JACINTA	1
IRISH BREEDS	MR P HAND	NUTSTOWN BRACKEN OF CALCARA BLOSSOM OF NUTSTOWN	7 9
CARLOW	MR R PARKES	CH CAPITAN OF SHANTAMON BEARNA BUI IMAGE OF KNOCKNAREA	5 3
BULL BREEDS	MR C GARDNER	CH CAPITAN OF SHANTAMON CALCARA CAOIMHE	6 6
DUBLIN DOG SHOW SOC	MS E C MURPHY	MCGILLIGAN OF NUTSTOWN BLOSSOM OF NUTSTOWN	4 4

COMPILED BY JIM BEHAN

### HOUND GROUP WINS

Combined Canine      Blossom of Nutstown  
Cork & District      Blossom of Nutstown

Munster Canine      Ch Capitan of Shantamon  
Kilkenny & District      Ch Capitan of Shantamon  
Sligo & District      Ch Capitan of Shantamon

**ANNUAL CHAMPION**  
**Ch Capitan of Shantamon:**

**RUNNER UP; Blossom of Nutstown**

*(Only points won in Breed competition  
count towards Annual Champion)*

**BEST IN SHOW WINS;**  
**Sligo & District;**

**Ch Capitan of Shantamon**

**LONGEVITY**

Athcarne Murphy 14/5/86 - 5/8/95  
(Chapelleigh Barun x Athcarne Eadion)

Athcarne Grainne (20/12/78 - 1990)  
(Athcarne Fintan x Carrokeel Moonbeam of Nendrum)

Athcarne Seamus (8/10/83 - 1992)  
(Carrokeel Kalypso - Athcarne Neesha)

Ballykelly Dhu (13/3/1983 - still alive)  
(Int Ch Nutstown King x Dunleary Eileen Oge)

Killykeen Jermyma (1/5/85 - still alive)  
(Killykeen Mars x Killykeen Melba)

Knocknarea Eoghainin (15/2/1984 - still alive)  
(Carrokeel Kalypso x Lady of Nutstown)

Knocknarea Brennan (6/4/1985 - still alive)  
(Athcarne Oisín x Lady of Nutstown)

Knocknarea Briciu (1985 - 1994)  
(Athcarne Oisín x Lady of Nutstown)

Knocknarea Baba Yaga (6/4/5 - still alive)  
(Athcarne Oisín x Lady of Nutstown)

Knocknarea Caoimhe (1985 - 1995)  
(Athcarne Oisín x Lady of Nutstown)

*Compiled by Miss Isobel Walton*



**OUR CLUB BADGE**

*Green and blue enamel with Wolfhound head in silver*



Price £5.00 + Postage & Packing

• **NOW AVAILABLE** •

*from Club Secretary: Mr Seamus Buggle,*  
Narraghmore, Ballitore, Co Kildare • Tel 0507-26625

**NEW SECRETARY**

**SEAMUS BUGGLE,**  
**Narraghmore, Ballitore, Co. Kildare.**  
**Telephone: 0507 - 26625**

## NEW CHAMPION



## NEW CHAMPION

### CH. BLOSSOM OF NUTSTOWN

Owners: John & Kathleen Kelly

Breeders: Owners

Born: 25th February, 1992

<b>Ch. Cillian Ruane</b>	Chappelleigh Duke of Nutstown	Clonara Nizam
		Nutstown Grainne
	Nutstown Uisce	Chappelleigh Barun
<b>Duchess of Nutstown</b>		Ch Sorcha of Nutstown
	Ch Carrokeel Sir Connel of Nutstown	Ch/UK Ch Nutstown King
		Carrokeel Laois
	Ch Sara of Nutstown	Gwernyfed Lleigus of Carrokeel
		Ch. Nutstown Queen



## NEW CHAMPION



### NEW CHAMPION

#### **CH/UK CH BOKRA GEORGE CAREDIG**

Owners: Debbie & Roger Tebbutt

Breeders: Sandra Surrell &  
Kathleen Coleman

Born: 18th October, 1991

Photo Tebbutt

<b>UK Ch Caredig Yankeedoodle</b>	Clonara Nizam	Solstrand San Antonio of Edeyrn
		UK Ch Clonara Cassnu
	Caredig Electra	Fitzarran Yankee of Eaglescrag
<b>UK Ch Chater Tapestry at Bokra</b>		Caredig Meg
	UK Ch Sovryn of Drakesleat	UK Ch Drakesleat Kyak
		Bokra Kaprice
	Bokra Taisca Alainn of Chater	Bokra Pagan
		UK Ch Bokra Mystic

## IN MEMORIAM

### *Mrs D.E.S. Hudson*

Susanne Hudson died on 30 January 1996 at the age of 80 years. With her has gone not only one of the last links, through her parents, with the breed in the 1920's and 1930's, but also a lady of striking personality and character.

Her parents, Capt. and Mrs. Hudson of the well-known Brabyns prefix, kept a large kennel of Wolfhounds and favoured an active, working type. They were in fact primarily responsible for having the breed accepted by the Kennel Club as a coursing breed.

Susanne enjoyed the hounds as a child, riding out with them on ponies with her sisters. However as a teenager her gifts as an artist took her away to the Royal Academy in London where she gained a diploma in art. This and subsequent marriage, and the birth of her two sons, separated her from the breed for many years.

In the early '50s, following a divorce, Susanne decided to take to the road, and, with characteristic determination and flair, did it in style, hitching her pony to a Romany caravan, and plying highroads and byeroads of Great Britain for the next 10 years; she was accompanied by her young sons, a Bull Terrier, and a Beagle, and augmented her small private income by selling her art at fairs.

Eventually, Susanne's travels were to bring her to Ireland, and to her long time friend, Sheelagh Seale. Depending on Sheelagh to have arranged a dwelling and some space for her pony, chickens and geese, she arrived in Wicklow to discover that Sheelagh, well-meaning but never too organised, had somehow omitted all of these details. So, Susanne was obliged to set up home in her caravan on a small plot which boasted a quarry and a hospitable cave. Here she acquired a Saluki, and then in the early '60's came back into Wolfhounds buying Ch Ballykelly O'Flynn from Sheelagh Seale, her all time favourite Wolfhound. Together, Sheelagh and herself made many excursions to the English shows by boat and train. A highlight of those days was when B. O'Flynn and Sheelagh's McGilligan of Ballykelly gained their English titles on the same day under Mrs. Nicholls.

In the mid sixties, Susanne returned to England, acquiring a smallholding of a few acres at Foulsham in Norfolk, where she built up a flourishing kennel of Irish Wolfhounds. Obtaining the Brabyns prefix from her father, she once again brought the name back into prominence. She followed the tenets of her parents, breeding to a type that was capable of work. She disliked particularly overbuilt, heavy hounds, and hounds with bad feet. She also brought these views with her into the ring as a judge, where she was not afraid to dispose of some of the big winners of the day, if they did not conform. The Club's Irish Hound 1992 carries a profile of Susanne with details of her breeding.

Susanne was not one to be trifled with, and on one occasion she, made all the national papers by peppering with her shotgun a crop spraying aircraft which came too close, disturbing a bitch with pups, an intolerable invasion of her rights and privacy.

Susanne never wasted her artistic and literary talents. In 1981, she had published the neat and succinct "Brabyns Handbook on Irish Wolfhounds" written mainly for new owners and novice breeders; and in 1985 appeared "Gelert, that peerless Hound" in which she related the legend of Gelert and illustrated it with her own line drawings. Her drawings of famous Irish Wolfhounds are well known.

A few years ago, Susanne retired from breeding Irish Wolfhounds and returned to Ireland having retained her land near Woodenbrige. With typical enthusiasm she set about peopling her patch with two geese, a pony and two sheepdogs. Despite failing health she embarked upon training her sheepdogs for obedience competition and competed with some success at shows around the country.

She suffered her last months with quiet bravery. Although dying in Norfolk where she had chosen to be flown to spend her last Christmas with her grandchildren, her family decided that her ashes should be interred at Castlemacadam, Avoca, close by the grave of her longtime friend and mentor in Irish Wolfhounds, Sheelagh Seale. There were several local friends, and just a few members of the Irish Wolfhound Club of Ireland at the intimate funeral service.

We have lost a colourful personality, and, in her fierce independence, a notable feminist before the current fashion. We have also lost someone steeped in Wolfhounds from childhood. In that, the breed has also lost a living memory of long past Wolfhounds. A link in the chain has been broken.

Timothy Finney

# THE IRISH WOLFHOUND CLUB OF IRELAND

## Championship Show

JUDGE: MR SAMUEL EVANS EWING, 3rd, USA

The 70th Anniversary Show of the Irish Wolfhound Club of Ireland was held on the grounds of Setanta House Hotel, Celbridge, County Kildare, Ireland, Sunday, June 4, 1995. The weather was comfortable - mostly cloudy with touches of sunshine and a brief sprinkle of rain - and the venue most attractive - a lawn surrounded by shade trees near the main car park of the converted manor house. There was a total entry of 87, which Miss Betty Murphy, President of the Club, assured me was excellent as any number over 70 was considered good. The show was beautifully presented and ran at a pleasant, leisurely pace, with judging starting shortly after 11:00 A.M., stopping after dog judging for a pleasant lunch break and then an auction in the ring, and continuing until the finish of the numerous extra classes. Many of the exhibitors arrived the morning of the show, including one bitch that had ridden for over 3 hours in the sidecar of a motorcycle, with goggles and a windshield of her own. The show was sponsored by Tullamore Dew, which presented numerous key chains, umbrellas, and kegs of Irish whiskey (one to the judge, but only after he had finished!). The exhibitors were gracious and accepted their awards, or lack thereof, with equal courtesy, and the hounds were, on the whole, well presented and in good condition.

Best of the 31 dogs and winner of the Green Star from the Open Dog class was Bokra George Caredig, bred by the Misses Surrell and Coleman, owned and exhibited by Mrs. Debbie Tebbutt, and over by ferry from Anglesey, Wales. At 3 1/2 years he is a nicely moderate red brindle dog who won by virtue of excellent balance and easy movement. I particularly liked the veteran dog winner, Ch. Knocknarea Eoin, who excelled in type and shape and won the reserve Green Star but lost out to the younger dog in condition and movement. A number of the dogs, and a few of the bitches, lacked the kind of balance I would like to see. They were either very long in loin with a perfectly flat topline, or short in back and lacking in angulation front and rear.

The bitches, as usual, were a better lot, and the Open Bitch class of 18 filled with lovely hounds. The Irish have no bred-by-exhibitor class, so most of the mature animals and all champions (except veterans) are entered in the open class. Winner of the

Green Star, then Best of Breed, was Bearna Bui Jacinta, nearly 4 years old, bred and handled by Jim Behan, and owned by Mr and Mrs Walsh from County Galway. This lovely grey brindle is to my eyes close to perfect in type, with everything where it should be, topped by the soft, true IW expression in a prematurely silver head. She also won the cup for best movement, so the total package really was something special. I was told later that Jacinta had also won Best of Breed at the 1994 Specialty under Mrs Mary Morrison.

The reserve Green Star went to a light grey brindle not yet 2 years old from the Graduate Bitch Class, Owenmore Goshawk, owned and bred by Mrs L Gover. Best Puppy was a pretty black bitch, Athcarne Feena, bred by T. Redmond owned by Mr. and Mrs J Kelly of Nutstown Kennels. The Veteran Bitch class of 9 was won by Mr and Mrs Finney's, Ch Gullagh Isolde, and the same breeder-owners won the Team Class of 4 with three lovely bitches handled capably by Mrs. Finney. The Irish teams consist of only three hounds, which still can be quite a handful. The Brace Class was won by a young Nutstown brother and sister, Nutstown Bracken of Calcara & Nutstown Fern of Calcara, owned by Mrs C O'Keeffe.

In Ireland Stud Dog (winner O'Keeffe's Cillian Earl of Nutstown) and Brood Bitch (winner Gover's Ch Owenmore Ciara) classes are among the special classes and open only to those hounds whose progeny have been entered in regular classes, with two or more progeny to compete. Cups are also given for the tallest IW at the show (winner Fitzpatrick-Odahamier's Owenmore Merlin, measured by the judge at 91.5 centimeters), the tallest and most sound bitch (winner Peiler's Bearna Bui Image of Knocknarea), and the Best head and expression (awarded to the Reserve green star dog, Peiler's Ch Knocknarea Eoin).

Needless to say, I had a grand time at this show. My stewards and the club officials did all they could to make my day as smooth and enjoyable as possible. Whether winners or losers, all seemed to accept my decisions with the same pleasure. Everywhere we went in Ireland we found the Irish people to be friendly and welcoming, and the show was no exception.

**Samuel Evans Ewing, 3rd**

## MINOR PUPPY DOG



**CHAPELLEIGH MYKAL**

1st Bushby's CHAPELLEIGH MYKAL

## PUPPY DOG



**FINGAL OF NUTSTOWN**

1st Kelly's FINGAL OF NUTSTOWN  
2nd Bedford's CARRIGROHAN TRUMPETER

## JUNIOR DOG



**CHAPELLEIGH KUDOS**

1st Bushby's CHAPELLEIGH KUDOS  
2nd Malley's AINSEA LORD HESKETH  
3rd Jones' MIDNIGHT WANDERER

## NOVICE DOG



**CAREDIG SION CENT**

1st Tebbutt's CAREDIG SION CENT  
2nd Malley's AINSEA LORD HESKETH  
3rd Kelly's MCGILLIGAN OF NUTSTOWN  
4th Fitzpatrick-Odahamier's OWENMORE MERLIN

## GRADUATE DOG



**NUTSTOWN BRACKEN OF CALCARA**

- 1st O'Keeffe's NUTSTOWN BRACKEN OF CALCARA
- 2nd Gover's OWENMORE EAGLE AT ELPYK
- 3rd Fitzpatrick-Odahamier's OWENMORE MERLIN

## OPEN DOG



**BOKRA GEORGE CAREDIG (Green Star Dog. Res BIS)**

- 1st Tebbutt's BOKRA GEORGE CAREDIG
- 2nd Kelly's CH CAPITAN OF SHANTAMON
- 3rd Killykeen-Doyle's KILLYKEEN NAGLE
- 4th Gover's CH OWENMORE KINGFISHER

## LIMIT DOG



**BALLYPHELAN BRAN BEAG**

- 1st Malley's, BALLYPHELAN BRAN BEAG
- 2nd Walton's TOLKAVALLEY ATHCARNE CRAIGIE
- 3rd O'Keeffe's CILLIAN EARL OF NUTSTOWN

## VETERAN DOG



**CH. KNOCKNAREA EOIN Res GSD**

- 1st Peiler's CH KNOCKNAREA EOIN
- 2nd Hand's KILLYKEEN MAX

### MINOR PUPPY BITCH



**ATHCARNE FEENA**

- 1st Kelly's ATHCARNE FEENA
- 2nd Peiler's KNOCKNAREA INNION
- 3rd Hendrick's CHAPELLEIGH MISSOURI

### JUNIOR BITCH



**AINSEA HARMONY**

- 1st Malley's AINSEA HARMONY
- 2nd Redmond's ATHCARNE EMMA
- 3rd McCarthy's MOLLY MALONE

### PUPPY BITCH



**CARRIGROHAN CARA CARA**

- 1st Bedford's CARRIGROHAN CARA CARA
- 2nd Borrett's CARRIGROHAN TURTLEDOVE
- 3rd McCarthy's MOLLY MALONE

### NOVICE BITCH



**ROSEMARY OF NUTSTOWN**

- 1st Kelly's ROSEMARY OF NUTSTOWN
- 2nd Malley's AINSEA HARMONY
- 3rd Finney's GULLIAGH POPPY
- 4th Gover's OWENMORE OSPREY



## GRADUATE BITCH



**OWENMORE GOSHAWK. Res. G.S.B**

- 1st Gover's OWENMORE GOSHAWK
- 2nd O'Keeffe's NUTSTOWN FERN OF CALCARA
- 3rd Kelly's BLACK BEAUTY OF NUTSTOWN
- 4th Yourell's SUNSHINE PATSIE

## OPEN BITCH



**BEARNA BUI JACINTA. Green Star & BIS**

- 1st Walsh's BEARNA BUI JACINTA
- 2nd Peiler's BEARNA BUI IMAGE OF KNOCKNAREA
- 3rd Tebbutt's CH/UK CH BALLYPHELAN CASCADE CAREDIG
- 4th Finney's CH. GULLIAGH NADIA

## LIMIT BITCH



**BALLYBLARNEY SANDIE**

- 1st Buggle's BALLYBLARNEY SANDIE
- 2nd Redmond's ATHCARNE BRONA
- 3rd Kelly's BLOSSOM OF NUTSTOWN
- 4th O'Keeffe-Donlon's CALCARA CAOIMHE

## VETERAN BITCH



**CH. GULLIAGH ISOLDE**

- 1st Finney's CH. GULLIAGH ISOLDE
- 2nd Kelly's HOLLY OF NUTSTOWN
- 3rd O'Keeffe's NUTSTOWN KENILWORTH SELMAR
- 4th Finney's YVONNE VON DER ALTEN VESTE

## BRACE

- 1st O'Keeffe's NUTSTOWN BRACKEN OF CALCARA  
NUTSTOWN FERN OF CALCARA
- 2nd Kelly's CH CAPITAN OF SHANTAMON  
FINGAL OF NUTSTOWN
- 3rd Peiler's CH KNOCKNAREA EOIN  
BEARNA BUI IMAGE OF KNOCKNAREA
- 4th Bedford's CARRIGROHAN CARA CARA  
CARRIGROHAN TRUMPETER

## TEAM

- 1st Finney's team    2nd Kelly's team    3rd O'Keeffe's team



Tullamore Dew Sponsorship  
Conor Oh Aonghusa of Tullamore Dew presenting  
sponsorship cheque to Club President Betty Murphy

## ROLL OF HONOUR

### BEST OF BREED/Green Star Bitch/Best Movement



Walsh's BEARNA BUI JACINTA

### RES. BEST OF BREED/Green Star Dog



Tebbutt's BOKRA GEORGE CAREDIG

- Res. Green Star Dog    Peiler's CH. KNOCKNAREA EOIN  
Res. Green Star Bitch    Gover's OWENMORE GOSHAWK

**BEST STUD DOG.**



O'Keeffe's **Cillian Earl of Nutstown**

**TALLEST & MOST SOUND BITCH.**



Peiler's **Bearna Bui Image of Knocknarea**

**HEIGHT CUP**



Fitzpatrick-Odahamier's **Owenmore Merlin**

**BEST BROOD BITCH**

Gover's **Ch Owenmore Ciara**

**BEST MOVEMENT**

Walsh's **Bearna Bui Jacinta**

**ANNUAL CHAMPION 1994**



Kelly's **Ch Capitan of Shantamon**

**BEST HEAD & EXPRESSION**



Peiler's **Ch Knocknarea Eoin**

**JUNIOR HANDLERS (under 10 years)**



Ian Finney receiving award from Maeve McKenna

**JUNIOR HANDLERS (over 10 years)**



Damian Geoghegan

The Club would like to thank Mrs Paul Hayes, USA and Mrs Jane Usmar, New Zealand for allowing us use some of their photographs.

# **THE PREVALENCE OF CONGESTIVE CARDIOMYOPATHY**

## **In the Irish Wolfhound Population in the Netherlands**

**Presentation at the 15th July Meeting 1995 of the  
Federation of European Irish Wolfhound Clubs (EIWC)**

Pascal Mioch, Daniel Mioch and Arnold A. Stokhof.  
Department of Clinical Sciences of  
Companion Animals of Utrecht University

### **INTRODUCTION**

It may be possible to increase life expectancy of the Irish Wolfhound, according to IERDIE, the Dutch Association of Irish Wolfhound breeders. This Association believes that deterioration of cardiac function in older Wolfhounds is the most important cause of the short lifespan time of dogs belonging to this breed. I was asked to consider this problem and I advised that the first step should be to investigate the prevalence of the most important cardiac disease, i.e. congestive or dilative cardiomyopathy (CCM or DCM). My presentation includes a description of this syndrome, followed by the investigative approach to be chosen. The presentation will be concluded by describing the possible approaches to achieve a healthier Irish Wolfhound with a longer life expectancy.

### **DESCRIPTION OF THE SYNDROME**

#### **Normal cardiac function**

The heart is the centre of the circulation of the blood. Two systems may be distinguished, i.e., the pulmonary circulation system which normally has a low pressure, and the systemic circulation which has a higher pressure. The functioning of the heart is determined by four important factors which are preload, afterload, inotropy, and rate and rhythm. In cardiac failure, any of these factors may be responsible for the inappropriate functioning of the heart. If cardiac function diminishes this may be life threatening because life depends upon adequate transport of substances essential for metabolism of the individual cells.

### **Congestive cardiomyopathy**

This term indicates a progressive loss of ability of the heart to contract properly for maintenance of the normal blood circulation. In the clinical literature it has been reported that primary cardiomyopathy indicates that the etiology is unknown. In secondary cardiomyopathy the development of CCM may be due to the end stage of toxic (doxorubicin) and immunologic processes, metabolic disturbances, or bacterial, viral or protozoan infections, but it may also develop experimentally in healthy dogs after stimulating the heart during several days with an abnormally high heart rate.

The disease usually occurs at 4 to 6 years, but has been diagnosed at 6 month to 14 years. Predominantly male dogs of giant breeds are affected. Therefore a genetic predisposition may play an important role. CCM results in signs of cardiac failure.

Exercise intolerance, dyspnea, coughing, ascites, pleural effusion, and even syncope with or without exercise can develop, the ultimate outcome being death. It is possible for the companion animal clinician to diagnose the disease, using physical examination and electrocardiography, but echocardiography is most helpful.

### **TREATMENT AND PREVENTION**

There is no specific treatment, because myocardial tissue is replaced by fibrous tissue and is therefore lost. Treatment of arrhythmias, diuretic therapy, inotropic stimulation, and decreasing the afterload may have a favourable effect in individual patients. Preventive measures cannot be taken unless the etiology is known. Therefore the IERDIE has initiated a soundly based scientific investigation of the prevalence of this disease in the Irish Wolfhound population in The Netherlands. If successful this approach may also be followed in other countries.

## PREVALENCE INVESTIGATION

In the development of this study three conditions had to be fulfilled:

1. **Scientifically correct**
2. **Internationally applicable**
3. **Affordable**

After discussing the problem with a statistician we learned that sample taking at random would meet our above mentioned purposes. Because there are approximately 1000 wolfhound dogs in our country 100 dogs need to be examined. If the prevalence of the disease is between 3.5 to 15%, the findings in 100 dogs has a reliability in the complete population of 95%. This has been used to determine this sample of 100 dogs. If fewer than 100 dogs are examined the accuracy would be lower at this prevalence. If the prevalence is greater than 15%, the sample would have to be greater. For reliable results, random sampling is necessary. IERDIE will provide a list of the identification numbers of the Wolfhounds from which sampling at random can be undertaken by a computerized procedure. The selected owners will be informed and later they will be asked to present the dog for examination, for which the time can be chosen by this owner to a certain extent. The dog will be examined in the Utrecht University Companion Animal Clinic. The examination will include a physical examination, ECG, echocardiogram, and a blood sample.

## DISCUSSION

The results should reveal whether CCM is a real problem in this breed. If it is, clustering of the disease in certain family lines can also be evaluated. The usefulness of the results is determined by their reliability. Therefore it is essential that all owners respond to the invitation to have the dog examined. It is clear that the results have to be kept confidential and will only be presented anonymously. If certain breeding measures are needed, action must be decided by the board in cooperation with the Association members. Although life expectancy is not the same as CCM, this investigation will obtain more detailed information about the wolfhound breed in our country. The breed will benefit from this knowledge and the well-being of the individual dogs can be improved.

June 1995.

## CLUB MERCHANDISE

### Books

**The Irish Wolfdog** by Hogan & Graham

Price £20.00 Postage £3.50 extra

**Graham's Pedigrees 1859-1906**

Price £20.00 Postage £4.00 extra

### Club Show Videos

1989 1990 1991 1993 1994 1995

Price £15.00 each plus £3.00 P & P

• • *Now Available* • •

### SWEATSHIRTS AND T-SHIRTS

with small or large Club logo

**Colours:** Navy, Green, Red, Black,  
White and Light Grey

**Sizes:** S, M, L, XL.

Price: Sweatshirts; £17.00 plus P & P

T. Shirts; £7.50 plus P & P

*Available from:*

**MRS IKA PEILER,**

**The Burrow, Clooneen, Ballymote,  
Co. Sligo, Ireland.**

**FAX & Telephone (071) 65295.**

**e-mail <uipeiler@iol.ie>**





# WORLD CONGRESS OF KENNEL CLUBS, DUBLIN, 1995

## IRISH BREEDS WORKSHOPS & EIWC

### CONGRESS

The 8th World Congress of Kennel Clubs, was held in Trinity College, Dublin and attracted approximately 60 delegates from a world spread of 25 Kennel Clubs. This represented the largest attendance at a Congress in recent years.

The purpose of the Congress is to give the Kennel Clubs of the World an opportunity to meet and discuss the well-being and future of dogs and "dogdom".

*The papers presented were as follows;*

- Public Education, Insurance for the Future - USA
- Mutual Recognition of Kennel Club Awards and Titles - Columbia
- Genetics, Hereditary Diseases, the Way Forward - Ireland
- V.C.A. School Education Programme - Australia
- Use of Foundation Funding for Dog Welfare - Netherlands
- Breed Standards from a Health Profile - Germany
- The Validity of Quarantine in this Day and Age - E. Africa Health,
- The Greek Sheepdog "Hellinikos Pimenikos" - Greece
- Native Irish Breeds Presentations - Ireland
- The Future of World Congresses - Bermuda

The special value of the World Congress is that they give all Kennel Clubs, irrespective of the size of the country represented, an equal voice in contrast to other international meetings which tend to be dominated by a few of the stronger Kennel Clubs. In addition to formal presentations, a Congress gives members an opportunity to discuss and exchange views on a wide range of topics. For example, concern was expressed that the Swedish Government proposed to ban certain breeds and the Congress was asked for its support. A resolution was passed asking the Swedish Government to rescind this legislation.

The Native Irish Breeds presentations on judging generated much discussion on failure to judge to the Standard. It was reported that Germany have arranged a Judges Meeting in 1996 to discuss such issues.

The success of the Dublin Congress helped to ensure a safe future for World Congresses. In the present climate, it was considered most important that delegates should have an opportunity to plan and prepare for the future well-being of dogs.

The 9th World Congress will be hosted by the Kennel Club of Southern Africa in 1997 and in the meantime, they will act as liaison between the Congress delegates to give effect to the various resolutions of the Dublin Congress.

The 10th World Congress will be hosted by the American Kennel Club in the year 2000.

### WORKSHOPS & SPECIAL EVENTS

As the Congress sessions could only be attended by delegates accredited by their respective Kennel Clubs, the Congress Committee had the imaginative idea of putting on a series of Workshops and Special events for non accredited visitors and the general public.

**Workshops;** The Irish Native Breeds; Field Trials; Agility/Obedience and Educational Programmes.

**Special Events:** Champion of Champions competition; Field Trials in the Dublin Mountains (Irish Red Setter -V- Irish Red & White Setters) and a Pointer & Setter Inter-Club Stake; Greyhound Racing at Shelbourne Park and an All-Breed Championship Show with CACIBs being awarded for the first time in the British Isles.

### IRISH NATIVE BREEDS WORKSHOPS

The main presentations made in one of the lecture halls at Trinity College and information desks in the Irish Breeds Hall were well attended, especially by our overseas visitors. Tony Killykeen Doyle made the main Presentation on the Irish Wolfhound and Jim Behan made the presentation specifically on Judging of the breed. As co-ordinator of the Irish Breeds Workshops, naturally this was my main interest at the Congress. The very positive feed back from overseas Irish Breeds Clubs is very rewarding, and a tribute to the various Irish Breed Clubs and presenters who put in so much hard work to make the workshops a success. At home many people expressed regret that they could not attend the Presentations so The Irish Breeds Society plan a full day Irish Breed Seminar on February 24, 1996 - a synopsis of the three day Irish Breeds Workshops.

ECM



JOHN KELLY, JIM BEHAN AND KATHLEEN KELLY AT IRISH WOLFHOUND INFORMATION DESK IN IRISH BREEDS HALL AT CONGRESS

## Federation of European Irish Wolfhound Clubs

A Meeting of Federation of European Irish Wolfhound Clubs (EIWC) was held in Trinity College, on the 15th July, 1995 in conjunction with the World Congress. Once again our Congratulations to the Dutch Irish Wolfhound Club (IERDIE) on founding the Federation. It was a great pleasure to have the inaugural meeting in Dublin.

The articles of association, prepared by Mr Tob Swelheim, were read. Some changes and amendments were proposed and accepted at the meeting. I would like to thank Mr Swelheim (Holland) for the amount of work which he put into the preparation of these articles. I was also involved in their preparation and appreciate the time it takes to prepare them.

Prof. Stockhof, Utrecht University, gave a very interesting and beautifully illustrated talk on "The Prevalence of Congestive Cardiomyopathy in the Irish Wolfhound Population in The Netherlands". The text of his lecture is published in this magazine.

### Board members elected for the coming year were;

President	Ms. E. C. Murphy (Ireland)
Chairman	Mr. T Swelheim (Holland)
Deputy Chairman	Mr. A Killykeen Doyle (Ireland)
Secretary	Mr. W Hasselbrink (Germany)
Treasurer	Mrs. L Helpi (Finland)
Observer	Mr. J Briggs (UK)

Our thanks to John & Kathleen Kelly for the most enjoyable "Irish Evening" we had at their Country Club following the Congress championship show on the Sunday night.

Since the Congress Mr Swelheim has sent out minutes of the Dublin Meeting and a copy of the Articles of Association as passed by the meeting.

**NEXT MEETING:** 22/23 June, 1996 at Castrop Rauxel, Germany. This event will be in conjunction with a two-day Sight-Hound show at which a large entry of Wolfhounds is expected. See detailed Agenda below.

*Elizabeth C Murphy*

## EIWC WEEKEND AT CASTROP RAUXEL, GERMANY, 22/23 JUNE, 1996

*Details from: Mr Willi H. Hasselbrink*

D-69198 Schriesheim, Ursenbacher Hof

Telefon 0049-6220-1530 • Telefax 0049-6201-802056

I would like to inform you that the next meeting of the Federation of European Irish Wolfhound Clubs (EIWC) will be held on the weekend of June 22/23, 1996 at Castrop Rauxel in Germany.

The weekend will start at 10.00 a. m. on Saturday, June 22nd, with Sweepstakes for the Junior Classes. The Congress of EIWC will take place from 3 p.m. to 6 p.m. at the Ramada Hotel "Schloßhotel Goldschmieding" at Castrop Rauxel, just 200 meters from the show grounds.

Following the Congress there will be a reception in the garden of the hotel and an official dinner (jacket and tie) at the Gourmetrestaurant Goldschmieding.

On Sunday morning, June 23rd at 10.00 a.m. the show for all 13 breeds of Sighthounds will start. For Irish Wolfhounds this event will also be the German Specialty. The entry for the classes will follow the VDH-rules:

Puppy classes	6 - 9 months
Junior classes	10 - 18 months
Open classes	15 months up
Champion classes	hounds that are registered as international or national champion according to FCI-Rules
Veteran classes	hounds more than 8 years old

The Best of Breed will compete with the other BOB Sighthounds for Best in Show.

We believe that this Sighthound Show certainly will be of great interest for all Sighthound friends and especially attractive for Irish Wolfhound people. Therefore, we kindly request you to draw everybody's attention to this exciting meeting.

We have made reservation for 60 rooms at a special rate at the top class Ramada Hotel from June 21 to June 24. The price per night is DM 120,— for a single room and DM 170,— for a double. Per hound they will charge DM 10,— per day. If you want to make reservation for hotel accommodation just let me know.

*Willi H. Hasselbrink*

# IRISH WOLFHOUND CLUB OF NORTHERN IRELAND

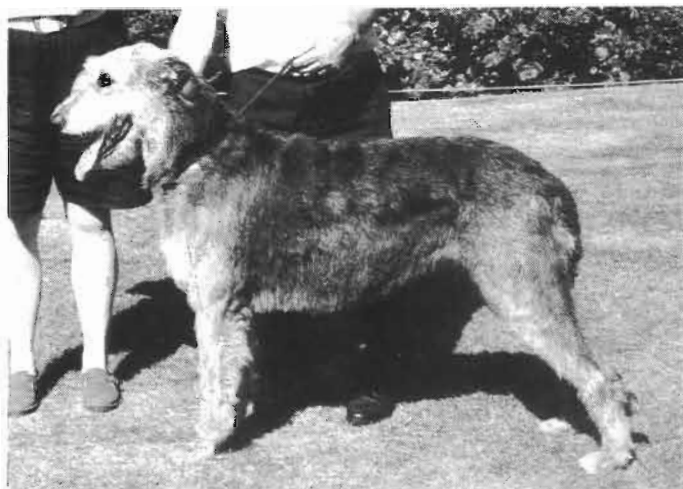
## Championship Show 30th July 1995

Judge Jill Richards Bregy (USA)



C C DOG AND BEST IN SHOW  
**BALLYPHELAN BRAN BEAG**

Photo Maynard Collins



C C BITCH AND RES BEST IN SHOW  
**BEARNA BUI JACINTA**

Photo Maynard Collins

The Irish Wolfhound Club of Northern Ireland held their 25th anniversary championship show at Belmont Hotel, Banbridge. It

was with great pleasure that I accepted the assignment. This was the 6th Specialty that I have judged in Europe and as in the past, I was delighted with the overall quality. Generally speaking, breed type was excellent with dogs having the "rough coated Greyhound like appearance" that is so necessary for type, form and function in this breed. "Strength with elegance" is what I look for in the breed and I was delighted to find it in my winners as well as in a number of other dogs.

On the short side, I would say that the one problem I saw in a great number of dogs was a lack of angulation above the hock which creates an upright hock and is an indicator of poor articulation at that joint. On the long side, I was impressed with the overall breed type, harsh coats and general soundness of the entries. I greatly appreciated the record entry of 72.

For **BIS** I had two outstanding hounds. While both equally sound, the dog, **Ch Ballyphelan Bran Beag** exhibits greater strength in overall movement, has wonderful overall width and development and beautiful angulation in the stifle and above the hock. A superb dog. **RBIS** was between the RDCC and the BCC, **Bearna Bui Jacinta**, again 2 wonderful hounds and a close thing between them. The dog is a wonderful strong dog but the bitch with her strength and elegance went on to RBIS. Best head goes to Jacinta with her beautifully balanced head, absolutely smooth zygomatic arch, nicely placed eye and very strong muzzle, lovely outline both from the side and head on. Overall a smooth, strong head. Best gait, again to Jacinta with her smooth, strong effortless movement.

### JUNIOR DOG

1. Malley's **Ainsea Lord Hesketh**, lovely dog with a wonderful coat, beautiful typy head, lovely depth and a lot of substance. Overall I think I might prefer a little more length of leg to give him perfect balance but he's a lovely dog and moved with reach and drive, very powerful from the side.

2. Jones' **Midnight Wanderer**

### YEARLING DOG

1. Gover's **Owenmore Eagle of Elpyk**, beautiful typy dog, wonderful balance, lovely head and expression, very nice coat, beautiful angulation, lovely croup, solid topline, nice upperarm. Not moving quite as freely as I would like but still an excellent example of the breed and exceptionally sound.

2. Tebbutt's **Caredig Sion Cent**

3. Scullion's **Henry of Shantamon**

**POSTGRADUATE DOG** (three quite nice dogs).

1. Mackie's **Bribiba Doodle Dooley**, beautifully proportioned dog, correct length of leg to body length, lovely coat, lovely angulation fore and aft, nice rise over the loin, nice croup, lovely head and expression, overall excellent type. Needs to ease up some in his movement. Lovely type.
2. O'Keeffe's **Nutstown Bracken of Calcara**
3. Lark's **Ashgroave Broson at Covenant**

#### **LIMIT DOG**

1. Murphy and Baker's **Roscali Reagan**, quite a large dog, lovely outline, another beautiful coat, has a lot of presence standing, lovely type head and expression, strong neck coming into a nice shoulder and good topline, nice croup and angulation. I would fault him on being too narrow. Tremendously tall dog, moved along reasonably soundly and certainly deserves 1st.
2. Meredith's **Kereen Seanachie of Raglenary**
3. McKenna's **Venastar Deardoin at Lucamar**

#### **OPEN DOG**

1. Malley's **Ch Ballyphelan Bran Beag**, perfectly beautiful dog with lovely balance, wonderful topline, beautiful head and expression, very powerful neck coming down smoothly into his shoulders, absolutely faultless topline, moved along beautifully and has lovely angulation fore and aft. Exceptionally strong hock, beautiful croup and rise over the loin, very good dog. **CC and BIS**.
2. Tebbutt's **Ch/Ir Ch Bokra George Caredig**, powerful dog with a wonderful head and expression, strong neck coming into a strong topline, true hound who would last in the hunt, beautiful rib spring and loin. Dead sound on the move and using everything he's got to cover ground, **RCC**.
3. Lark's **Covenant Findail**.

#### **PUPPY BITCH**

1. Peiler's **Knocknarea Innion**, lovely bitch with beautiful balance, totally sound coming and going with wonderful reach going around, lovely head and expression, strong neck, great elegance, stands over her ground with a lot of presence, beautiful topline, croup and wonderful sound hock, lovely ear, great depth for her age.
2. Mackie's **Bribiba Charity Girl**
3. Holliday's **Athcarne Fineen**

#### **JUNIOR BITCH**

1. Malley's **Ainsea Harmony**, absolutely beautiful bitch with lovely outline, wonderful neck, head, expression and ear, lovely shoulder coming into a very strong topline, lovely croup, correctly angulated

in the rear, moved well, carried herself well.

2. MacCauley's **Tullyrush Black Rose**

#### **NOVICE BITCH**

1. Finney's **Gulliagh Poppy**, quite a pretty bitch, lovely balance, lovely head and neck coming down into the shoulder, lovely depth of chest, nice loin, lovely angulation in the rear with nice croup. Coat not as harsh as it might be.

#### **POSTGRADUATE BITCH**

1. O'Keeffe's **Nutstown Fern of Calcara**, very pretty elegant bitch, easy, sound mover, lovely head, nice neck coming into a nice shoulder with lovely bone and substance, wonderful depth of chest, nice tuck up, nice rise over the loin and stands over her ground easily, beautiful angulation above the hock and good width through the thigh, very good bitch.
2. McCauley's **Mistweave Madam**
3. Savage's **Mistweave Morven**

#### **LIMIT BITCH**

1. Peiler's **Bearna Bui Image of Knocknarea, RCC**, the first two were very close in overall quality although different in their overall appearance, but two outstanding bitches. 1st has wonderful strength through the shoulder assembly and in the musculature coming down over the scapula, setting her front legs under her very nicely, lovely deep chest, nice tuck up, moderate angulation, wonderful example of a powerful working Wolfhound.
2. O'Keeffe-Donlon's **Calcara Caoimhe**
3. McKenna's **Bowsfall Bounty at Lucamar**

#### **OPEN BITCH**

1. Walsh's **Bearna Bui Jacinta, CC & RBIS**, simply splendid bitch, moved very well and made beautifully, tremendous elegance, stands with her head up and really owns the world. Wonderful coat, superb topline and doesn't put a foot down wrong, beautiful croup, wonderful outline, lovely depth of chest and good tuck up, example of what the breed should be, elegance with power.
2. Gover's **Ir Ch Owenmore Kestrel**
3. Tebbutt's **Ch/Ir Ch Ballyphelan Cascade Caredig**

#### **VETERAN BITCH**

1. Finney's **Ir Ch Gulliagh Isolde**, lovely bitch with great substance and lovely type, moved very soundly, nice angulation, good balance, in great shape for her age which is aided by her sound structure, strong bitch.
2. Finney's **Yvonne von der Alten Veste**.

# I.W.C. OF IRELAND CLUB OPEN SHOW

Judge: Mrs Esther Jenkins



PEILER'S BEARNA BUI IMAGE OF KNOCKNAREA (BEST BITCH) & KELLY'S MCGILLIGAN OF NUTSTOWN, BEST DOG & BEST OF BREED.

My thanks go to the Irish Wolfhound committee for inviting me to judge their open show held in conjunction with the hound Show and to the Hound Association for their invitation to judge additional breeds. My thanks also to all the owners of their hounds for the good entries and excellent sportsmanship and to Paul Dwyer, my very capable steward.

As I don't believe in insulting or possibly hurting people's feelings, I have chosen to give a short report on the First place winner only. Too many times have I seen judges take advantage and abuse the phrase "constructive criticism". I hope all exhibitors and hounds enjoyed their day as much as I did. Congratulations to all winners.

## PUPPY DOG OR BITCH.

1. Behan's **Lisnagry Jessica**. Nice 11 month old bitch. A shapely puppy with a kind expression, correct bite, a little shy but I am sure she will grow out of it. Beautifully shown and presented.

## JUNIOR DOG OR BITCH.

1 Peiler's **Knocknarea Innion**. Another shapely bitch with the correct topline. I would have preferred a little more spring of rib however this should improve with maturity. Nice ears, teeth and expression. Good movement in front and rear.

## GRADUATE DOG OR BITCH.

1 Kelly's **Rosemary of Nutstown**. 2 year old bitch. A very close decision between 1 and 2. The expression of 1 clinched it. Good length of back, well muscled and moved soundly.

2 Peiler's Knocknarea Grace.

3 Fitzpatrick-Odahamier's Owenmore Merlin.

4 Jones' and Jones' Midnight Wanderer

## LIMIT DOG

1 Kelly's **McGilligan of Nutstown**. Good bone and substance, moved with drive, he covers a good distance over the ground. Well angulated in front and rear. I was impressed by the overall quality and soundness of this hound - **Best Dog and Best of Breed**.



FITZPATRICK-ODAHAMIER'S OWENMORE MERLIN. WINNER BALLYVALLA TRAY (OWNER NEVER WON A GREEN STAR)

#### OPEN DOG

1. Fitzpatrick-Odahamier's **Owenmore Merlin**. A very tall hound. His movement is a little restricted. Unfortunately, Merlin was rather nervous therefore I was unable to handle him properly and make a full assessment of conformation. Stood alone.

#### OPEN BITCH

1 Peiler's **Bearna Bui Image of Knocknarea**. I liked this bitch as a puppy. Well bodied bitch with lots of bone, nice reach of neck. Sound movement, nicely shown. In excellent condition. **Best Bitch**.

2. Behan's Haley of Bearna Bui.

#### VETERAN DOG OR BITCH.

1 Kelly's **Holly of Nutstown**. Lovely elderly lady. Very sprightly at 9 years. Good shoulder placement, depth of chest and length of body. Well boned.

**Best Of Breed** - A hard choice between these two very fine hounds but at the end of the day a decision must be made. I preferred McGilligan's impressiveness and ring presence. I found this hound to be of very high standard and thus awarded him Best Of Breed.

Thank you to all who entered and exhibited. I wish you well in and out of the ring in 96.

**Esther Jenkins**

NEW  
PUBLICATION

## "A DISCUSSION OF THE IRISH WOLFHOUND"

*by Anthony Killykeen-Doyle*

Every new publication adds to our knowledge of the breed. Anthony Killykeen-Doyle's new book is full of illustrations of the original Hound of Ireland, many published for the first time. A real understanding of the Wolfhound of the past will guarantee the continuation of correct breed type. Too often one hears even long established breeders comment "a lovely hound, the real old fashioned type". An open admission that they know the correct type but are breeding to a different type.

Each book is accompanied by an Audio Tape of 'The History & Development of the Breed'.

See further details in Killykeen Irish Wolfhound advertisement.

*ECM.*



## THE IRISH HOUND MAGAZINE

*The following issues are still available*

1974/75	1985
1977/78	1986
1979/80	1987
1980/81	1988
1981/82	1989
1982/83	1991
1984	1992

1993/94 (double issue)

Back issues; 1974/75 - 1992;

Price £4.00 plus P & P

Double issue; 1993/94

Price £5.00 plus P & P

**Club Secretary:**

**Mr Seamus Buggle, Narraghmore,**

**Ballitore, Co Kildare**

**Tel 0507 - 26625**



# BRAY ALL BREED CH SHOW, 1995

Judge: Remy ERATH



**BOB: BEARNA BUI JACINTA**  
&  
**Res BOB: CH. CAPITAN OF SHANTAMON**

The invitation to judge Irish Wolfhounds at the show of 8th July 1995 in Bray was an honour and a great pleasure for me, especially as I celebrate this year the 20th anniversary of my own kennel "GREEN IRELAND". I would like to express my gratitude to the steward who greatly facilitated my work as a judge.

I really appreciated the quality of the dogs presented and I thank the owners for their kindness and sportsmanship.

It is a pleasure for me to give you now my remarks on my favourite dogs:

## **PUPPY DOG/BITCH**

**1. ATHCARNE FEENA** I admired this 8 month old dark bitch. She has magnificent curves and a very pretty and typical head. Her movement is powerful and easy going giving her a lot of grace and elegance. She has excellent pigmentation, is well built with good angulations in the hindquarters and large low hocks. A very promising prospect for the future if she bodies up.

## **OPEN DOG**

**1. CH. CAPITAN OF SHANTAMON** A splendid dark dog who impresses with his powerful and free movement. A dog of great qualities and substance, with the typical head of the breed which he holds proudly. Would prefer a slightly darker eye which would give him an even softer expression. His neck is well drawn, powerful and of good length. Good strong topline, chest well made and a good angulation of the shoulders; the hindquarters are impressing with power, the angulations wonderful with large low hocks. A splendid dog of commanding appearance.

## **OPEN BITCH**

**1. BEARNA BUI JACINTA** A 4-year old wonderful bitch with the typical expression which is more and more seldom seen. Very nice head, eyes and ears are of lovely shape, excellent pigmentation, neck, topline and croup with a nice arch over the loin. Well formed chest with a beautiful shoulder, excellent angulations of the hindquarters, large low hocks. She has

excellent round feet and a very good coat. The movement is powerful, free and with great reach. A bitch of great quality.

**2. BLOSSOM OF NUTSTOWN** Very beautiful grey bitch, 3 1/2 years old with ideal substance. Pretty head with nicely shaped eyes, good expression which I would prefer a bit softer. Excellent pigmentation, beautiful strong neck of just the right length, excellent topline and croup. Good angulations in the forehand, deep and broad chest. Powerful hindquarters with wonderful angulations, low large hocks and excellent round feet. Excellent coat. Movement free and very powerful with good reach. A well built bitch with plenty of dynamism.

**3. NUTSTOWN KENILWORTH BALMORAL GIRL** Very lovely bitch with a lot of substance. Very nice head with wonderful expression and well shaped eyes. Well formed neck, strong and elegant. Correct topline but a bit weak. Good angulation in the shoulder but the humerus should be slightly longer. Powerful chest and wonderful hindquarters with beautiful angulations, low large hocks. Good feet but somewhat turned in in front. Good coat. Movement powerful and with good reach. A wonderful bitch which doesn't show her 7 years.

With regard to the best bitch, the first rank was strongly fought over by JACINTA and BLOSSOM. These two bitches are very close as their qualities of type and slight faults are concerned, both are well constructed, BLOSSOM has more substance, JACINTA has slightly more pronounced rear angulations, both bitches have commanding appearance. Finally I decided in favour of JACINTA whom I found the wonderful expression of the IWHs of the 1970s - 1980s such as CARROKEEL FLORRIE OF NUTSTOWN, MARY OF NUTSTOWN, BOROUGHURY JUSTICE, AOIFE OF MOLL MACHIE, BALLYKELLY ERRISLANNAN LIAM, to mention only these.

The B.O.B. was to be decided between CAPITAN OF SHANTAMON and BEARNA BUI JACINTA, both are wonderful representatives of the breed. CAPITAN displayed a remarkably powerful yet floating gait, JACINTA followed briskly with dynamism, so once again I decided in favour of JACINTA's very beautiful expression and gave her the B.O.B.

*Judge: Remy ERATH*

## HEART CANCER, TORSION RESEARCH

As suggested at the Annual General Meeting, November, 1994, the Club invites donations for this research fund. Perhaps members would like to subscribe from their puppy sales or stud fees.

Cheques should be made payable to the Irish Wolfhound Club of Ireland - Research Fund, and sent to our treasurer: Mr. T. N Finney, Gulliaugh Farm, Leckinstown, Naul, Co. Dublin.



## NEW SECRETARY

**SEAMUS BUGGLE,**

**Narraghmore,**

**Ballitore,**

**Co. Kildare.**

**Telephone: 0507 - 26625**

# BEARNA BUI IRISH WOLFHOUNDS



**Lisnagry Jessica of Bearnabui**

Sire: Chulchoill Elan. Dam: Ch Genevieve of Bearna Bui

**Breeders; John & Maureen Walsh**

*Thank you John & Maureen for Jessica (Molly)*

**JIM BEHAN**  
145 Glasmore Park, Swords, Co Dublin  
Phone: 01-8402 305

# CARROKEEL Irish Wolfhounds & Irish Glen of Imaal Terriers



## LISNAGRY LYSANDER OF CARROKEEL

"Carbury" now 14 months (*Litter brother to Jessica on left*)

### • PUBLICATIONS AVAILABLE •

#### "RAISING, SHOWING & BREEDING THE IRISH WOLFHOUND"

(3rd Edition) by E C Murphy - £21.00\*

#### "THE IRISH WOLFHOUND:

#### A COLLECTION OF PHOTOGRAPHS & PEDIGREES"

Ireland & UK 1950-1990 by E C Murphy £39.00\*

"THE IRISH WOLFHOUND" (Historical) by Phyllis Gardner £12.50\*

\*All prices incl P & P - surface post outside Europe

Order from

**Elizabeth C Murphy,**  
Carrokeel Lodge, Pearmount Lane,  
Newcastle, Co. Dublin, Ireland.

Phone/Fax 01-6240512 (Int. + 353 1 6240512)

# NUTSTOWN IRISH WOLFHOUNDS



## **CH BLOSSOM OF NUTSTOWN** Top winning Bitch Ireland 1995

**Blossom gained her championship title in 1995**

**Her very successful year included:**

**Best in Show at Hound Ch. Show at Navan.**

**Reserve Best in Show at Cork all Breed Ch Show  
and Hound group winner at Hibernian All Breed Ch. Show.**

Congratulations also to the owners of **US Ch Cu of Nutstown**, **US Ch Eibhlin of Nutstown**,  
**US Ch Nutstown Michael of Tipperary** and **US Ch Shamus of Nutstown** - all gained their titles in 1995.

**JOHN & KATHLEEN KELLY**  
**Hollywood, Ballyboughal, Co. Dublin**

Phone (01) 8433113 (01) 8433406 • FAX 01-8433002

# NUTSTOWN IRISH WOLFHOUNDS



*Photo Maynard Collins*

## **CH CAPITAN OF SHANTAMON**

**Annual Champion 1994 & 1995 • Best in Show Sligo 1995 All Breed Ch Show:**

**Res Best in Show Kilkenny 1995 All Breed Ch Show**

**Hound Groups: Munster Canine 1995 All Breed Ch Show • Clonmel 1995 All Breed Ch Show**

**Fingal of Nutstown**, another Capitan son, was top winning male puppy in Ireland.  
Another son, **McGilligan of Nutstown**, having won many reserves to his illustrious sire,  
took his first Green Star at the final championship show in 1995

**Capitan has been named Pedigree Chum (Our Dogs) Top Sire.**

Capitan's son **Saringas Mr. Micawber** was top winning puppy UK 1995.

*Congratulations to Jenny & Vic on his success*

**John & Kathleen Kelly**

**Hollywood, Ballyboughal, Co. Dublin**

Phone (01) 8433113 (01) 8433406 • FAX 01-8433002

# CALCARA IRISH WOLFHOUNDS



**NUTSTOWN BRACKEN OF CALCARA (Born 19/7/93)**  
Cillian Earl of Nutstown x Lady Patricia of Nutstown

After a very successful puppy/junior career, Bracken is on his way to his championship, having won 3 Green Stars.

Bracken's sister, Brona (Nutstown Fem of Calcara) has won a Green Star and many Reserve Green Stars, as well as a Reserve CC at WELKS 1995.

Calcara Caoimhe, after numerous Reserve Green Stars, won her first major ticket at Bull Breeds Ch Show 1995.

This trio, fronted by their sire, Cillian Earl of Nutstown, carried off the Stud Dog Bowl at the I W Club of Ireland Ch Show in June 1995.

**MRS CATHERINE O'KEEFFE & MRS ANNE O'KEEFFE-DONLON**

**Calcara, Maryland, Ardcath, Co Meath**  
**Telephone Dublin 8354635**

# CHAPELLEIGH IRISH WOLFHOUNDS



Ch Greenswell Arranz  
of Chapelleigh  
AN. CH. '93 Age 7

Chapelleigh  
Kudos  
age 20 months

Chapelleigh  
Mykal  
Age 9 months

## CELEBRATING 20 YEARS IN THE COMPANY OF WOLFHOUNDS

*Congratulations to:*

**Can. Ch Chapelleigh Kiaren**  
B.O.W. Western Canada Specialty 1995  
**Chapelleigh Lewin** in N.Z. on his R.B.I.S.  
win at Dunedin Ch Show aged 15 months

**Nor. Ch. Chapelleigh Idessa**  
on her super litter of 9.

**DAVE & DENISE BUSHBY**  
**BOOLABAWN,**  
**GLYNN,**  
**ENNISCORTHY,**  
**CO WEXFORD.**  
**Phone: 053-28271**



# *Killykeen Irish Wolfhounds*

• ESTABLISHED 1954 •



**KILLYKEEN JERMYMA AT 11 YEARS OLD**

**TONY KILLYKEEN-DOYLE**

Tirlahood, Stradone,  
Co Cavan

Telephone: 049-30299

# *Killykeen Irish Wolfhounds*

• ESTABLISHED 1954 •



**KILLYKEEN NAGLE AT 2 YEARS OLD**

***New Publication: A DISCUSSION OF THE IRISH WOLFHOUND***

*by Anthony Killykeen-Doyle.*

Eighty photos, many never before published. Accompanied with Audio Tape of  
**"The History & Development of the Breed"** Price £28.00 incl P&P

**TONY KILLYKEEN-DOYLE**

Tirlahood, Stradone, Co Cavan. Telephone: 049-30299

# GULLIAGH IRISH WOLFHOUNDS



## **GULLIAGH ROBIN HOOD (13.06.95)**

*(Hydebeck Domain Debrett x Gullagh Melody)*

At 8 months, Robin is already showing all the essential size, substance and type that we have seen in his forebears, and that we know are the constituents of a super hound.

## **TIM AND MARION FINNEY**

Gullagh Farm, Lecklinstown, Naul, Co Dublin

Tel/fax Dublin 8413188

# CWN HELA CAREDIG HOUNDS

---



PHOTO TEBBUTT

## **CH/UK CH BOKRA GEORGE CAREDIG**

Bred by Sandra Surrell & Kathleen Coleman  
By our UK Ch Caredig Yankeedoodle ex UK Ch Chater Tapestry at Bokra

Among his many honours in 1995, he was  
Best Dog at the Irish Wolfhound Club of Ireland, Ch Show  
Green Star and CACIB at the IKC World Congress Show,  
Best Dog at the Irish Wolfhound Society Ch Show (UK) and  
Top I.W. Stud Dog (UK)

We've heard him described on both sides of the water as an  
"English and Irish Champion" which makes no sense to us since he's Welsh!

**Debbie & Roger Tebbutt**  
**Glyn, Llanbedrgoch, Anglesey, LL76 8SX, Wales**  
**Phone 01248 852387 • FAX 01248 852887**

# KNOCKNAREA -



Knocknarea Frances (Knocknarea Briciu x Knocknarea Deirdre) at 7yrs



Knocknarea Justine (Knocknarea Groi x Knocknarea Frances) at 6 months



Knocknarea Groi (Beamabui Irial x Knocknarea Ellis) at 2yrs.



Knocknarea Innion  
(Chulchoill Elan x Beamabui Image of Knocknarea) at 12 months

## *A Full House ...*

Our complete crew of hounds

All pictures taken recently, except CH Knocknarea Eoin's (at 5 yrs)

We are hoping for a litter in early April by CH&GB CH Bokra George Caredig ex Knocknarea Grace

Ulli & Ika Peiler

The Burrow, Clooneen, Ballymote, County Sligo

Telephone & Telefax 071-65295

e-mail <uipeiler@iol.ie>

# IRISH WOLFHOUNDS



Glenties Aine (Gulliaigh Hegarty x Knocknarea Damsha) at 3 1/2 yrs



Juxtalia Macmathuna of Knocknarea (Marumac Feril x Mochras Juxtalia) at 6 months



Knocknarea Grace  
(Beamabui Irial x Knocknarea Eilis) at 2yrs.



Bearnabui Irial (CH Greenswell Arranz of  
Chapelleigh x Carrokeel Gwyneth of Beamabui) at 4 1/2 yrs.



CH Knocknarea Eoin (Knocknarea Briciu x Knocknarea Cinn Oir) now 8yrs.



Bearnabui Image of Knocknarea (same as Beamabui Irial) at 4yrs

# Lisnagry Irish Wolfhounds



## Bearnabui Jacinta

PHOTOS: ERATH

We would like to thank the judges who critiqued JACINTA so favourably:

Mrs Rosemary Follett, UK: Best Head & Expression, Club Show 1992 when Jacinta was still a puppy.

Mr Gordon Crane, UK: 1st Novice, Club show 1993

Mrs Mary Morrison, Canada: Green Star and Best of Breed, Club show 1994

Mr Sam Ewing, 3rd, USA: Green Star & Best of Breed, Club show 1995

She also won Best Movement under Mr Ewing

Mr Remy Erath, Switzerland, Green Star & Best of Breed, Dunlaoghaire, 1995

Mrs Jill Bregy, USA, C.C., Best Head & Expression, Best Movement, N Irl Club Show 1995

Mr O Simpson, Wales, C.C. Belfast Show

• JOHN & MAUREEN WALSH •

GREENVILLE, MOUNTBELLEW, CO GALWAY

PHONE: 0905 - 78206



## Irish Wolfhound Club of Ireland.

# • CODE OF ETHICS •

### **1. IT IS THE DUTY OF ALL IRISH WOLFHOUND OWNERS TO KEEP THEIR HOUNDS UNDER CONTROL AT ALL TIMES.**

**To keep them well exercised and in good health and endeavour to further promote the image of the breed and it's equable temperament.**

2. Officers and Committee members of the Club should always be ready to do their best to help members with any queries or problems.

3. Advertising by members must be factual. Members should refrain from making unfair or untrue statements about the dogs or practice of others.

4. It should be impressed upon buyers that they should contact the breeder in the event of any problems with the puppy. Breeders should make every effort to be of assistance in these circumstances.

5. Each purchaser of an Irish Wolfhound puppy should be provided at the time of sale, with a pedigree, diet sheet and information about training, worming and inoculations.

6. Before breeding a litter consideration should be given to type, temperament, health and soundness. Aggressive dogs are not satisfactory as pets or breeding stock.

7. All breeding should be aimed at the improvement of the breed. Members should do all in their power to discourage breeding from clearly inferior specimens.

8. No member should breed a litter unless he has time and facilities to devote proper care and attention to the rearing of the puppies and the well being of the dam. No member should provide stud services unless satisfied that the owner of

the bitch has such time and facilities available. Members should allow their males to be used only if certain that both dog and bitch have something to offer towards the improvement of the breed, not just for stud fees. They should be prepared to assist in finding suitable homes for the puppies.

9. No member should breed a litter unless he is reasonably sure of finding homes for the puppies. No puppies should leave the breeder before the age of eight weeks at least. No bitch should be bred until physically mature.

10. No puppies should be sold to dealers, pet shops, laboratories, security firms or as security guard dogs or to persons known to sell puppies to any of the above. Nor should stud services be provided to such persons. Knowledge of such sales should be reported to the committee. It is recommended that no puppies should be sold to areas overseas that do not have similar standards of animal welfare to our own. If in doubt, check with the Club.

11. Prospective buyers of puppies should be screened for suitability and should be advised of the characteristics of the Irish Wolfhound as a breed. The breeder should encourage the prospective owner to feed the puppy correctly and endeavour to monitor it's progress and encourage the owner to keep in touch with the breeder, who should be prepared to take back any hound whose home may no longer be able to cope or to contact the Club's Rescue Service.

12. Members should only sell animals which to the best of their knowledge are in good health at the time of the sale.

