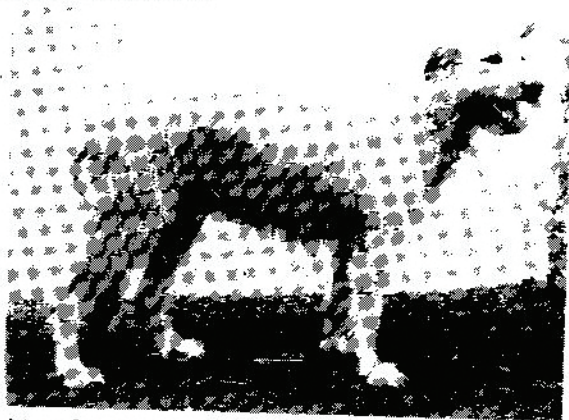


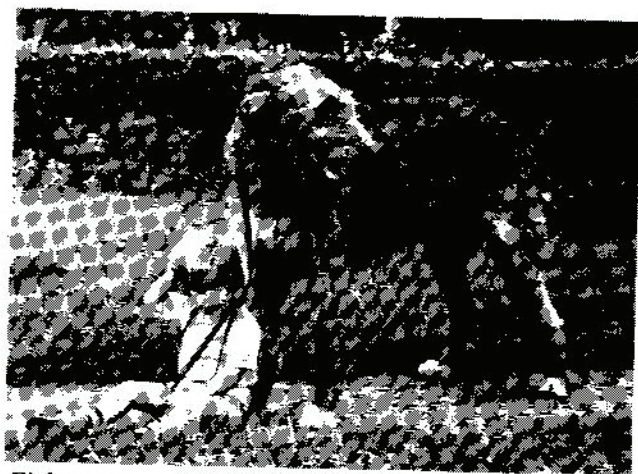
Profile

John & Kathleen Kelly—Nutstown Irish Wolfhounds

When John & Kathleen first became involved in Irish Wolfhounds it was with some reluctance. It all started when in 1960 the late Dr. May (Ballytobin) inveigled John into taking a bitch to mind. John had been putting him off for some time using his greyhounds as an excuse. At that time in 1960 he was without a greyhound and Dr. May took advantage of this, so the first Irish Wolfhound in the Nutstown Kennel was a very lovely big grey bitch, Bernie of Termon, (Ballykelly O'Leary x Ballykelly Molly Malone). Unfortunately we do not have a photograph of her, she had great size and quality. Another of the early hounds with Kelly's was Deirdre of Brabyns.



Deidre of Brabyns



Finbarr of Ballytobin and Vincent Kelly

Some of the champions which Dr. May bred in the 1960's were: U.S. Ch. Queen of Ballytobin; French Ch. Baldwin of Glen View by Finbarr of Ballytobin out of Deirdre of Brabyns and Ch. Prince of Baldara.



Malatown Lady

Out of Bernie of Temon came two very lovely bitches Malatown Lady and Maeve of Balgee. They were full litter sisters by Dr. May's renowned Ch. Connel of Nendrum. Dr. May sold Malatown Lady but John bought her back some years later. What a sound move that turned out to be, because, out of her came the really lovely Ch. Nutstown Queen, Nutstown's first Irish champion (1977). Queen is still going strong, she came out of retirement last year and as a veteran took the Reserve Green Star at our Club Show



Maeve of Balgee with Mary Kelly

Queen was mated to Ch. Ballykelly Errislannan Liam and produced Int. (Irish & Eng.) Ch. Nutstown King—Top Winning Irish Wolfhound in Ireland and England 1980 and again in Ireland in 1981. Among his most outstanding wins were: Best in Show at our Club show in 1979 and 1981, and he came out of retirement this year to take Reserve Best in Show only beaten by his daughter Nuala of Chapelleigh. At All-Breed Championship shows he took many Groups and went Best in Show All Breeds at the Hibernian Show.

King's offspring are still young but already doing well. Nuala of Chapelleigh, dam Sheba of Garrow and owned by Dave and Denise Bushby, England, has already been mentioned as going Best in Show at our 1982 Wolfhound Speciality and his son Carrokeel Sir Connel of Nutstown, unbeaten in his class as puppy, junior and yearling, recently

followed his sire's example by going Best in Show All Breeds at Monkstown.

Another great success on the Irish scene was Mary of Nutstown, who completed her championship in 1980 when she was Top Winning Irish Wolfhound Bitch in Ireland. Mary's dam was Maeve of Balgee, one of my great favourites. Maeve (Malatown Lady's litter sister) was an exceptional bitch, not very big but could she catch your eye! When she moved across the yard, walking or trotting, you had to stop and admire. She was "poetry in motion".

Some of the latest Nutstown Champions to date are French Ch. Buachaill of Nutstown (Ch. Queen of Nutstown by Gwernfyfed Lleigus of Carrokeel); U.S. Ch. Liam of Nutstown (Carrokeel Laois x "Lleigus"); U.S. Ch. Colleen and Mac of Nutstown, both out of Carrokeel Florrie of Nutstown by "Lleigus"; Princess of Nutstown (Maeve of Balgee by Justice); Ch. Nutstown Czararina out of Coolbreagh Coillte by "King" and Niamh of Nutstown out of Carrokeel Laois by Int. Ch. Carrokeel Coillte Merlin.

The Nutstown Irish Wolfhounds are spread throughout the world and are known and respected for their type and quality.

John and Kathleen have a great love for our breed and have at all times tried to produce true type and quality. They take very seriously their responsibility and realise the damage that can be done by careless breeding and I think their record reflects this. They have done a lot of good work in promoting our breed at home and abroad. They are both on the committee of the Irish Wolfhound Club of Ireland and work very hard for our dogs and Club.

Compiled by Jim Behan



Nutstown Queen & Nutstown King